



## Issue 18

## The latest in business news, events and training

### Talented couple take over Gerogery Hotel with big plans

**Editor, Marg Killalea** recently visited Gerogery to meet up with Lisa and learn about a journey which has brought this enterprising couple to the Greater Hume region.

Lisa and Norm Carl have become the new licensees of the Gerogery Hotel in March 2021, and despite stay at home orders and lockdowns, they are very excited about the potential they see for the business and the site.

**The hotel business employs up to 10 staff and is open for dinner Tuesdays to Saturdays and lunch on weekends.**

Fondly known as 'The G-Rodge', the hotel has become popular due to an ever growing reputation for good food, and a family friendly atmosphere. "Feedback has been really good from customers especially about our menu" said Lisa.

**One early decision was to establish a retail stop on site for their online business The Riverina Hamper Co. a gift hamper business** that the couple already had established. Hampers feature products sourced from over 100 high quality local Riverina-Murray producers.



^ Norm Carl - Gerogery Hotel retail store

Products appearing in the hamper range vary and include baby wraps and bibs, local coffee roasted at Jindera, bags made by Poddy Creations of Henty, gift cards made by a celebrated Wagga Wagga artist and quadriplegic, handcrafted wood items including coasters, spoons, skateboards, handmade biscuits from Griffith just to name a few. Regional wines and spirits featured include Barombola, Lillypilly Wines, Nugan Estates and Bulla Wines, and Tumut River Brewing Co and Riverina Gin.

The Riverina Hamper Co featured in a recent media release by the Deputy Premier, John Balilaro, MP, supporting the NSW Government's Buy Regional initiative

The business has grown substantially in the first 12 months with orders for hampers coming from across Australia and a growth in corporate orders, and is in response to people looking for a perfect lockdown gift.

**Since taking over the pub, Norm and Lisa have also started monthly community markets - Markets @ the G-Rodge.**

"This market is growing, held on the second Saturday of each month and highlights our amazing local artisans and makers! Many of the creators of the products in our hampers have been stallholders at our markets and also keep our shop stocked. We are very much looking forward to our first twilight market on Saturday 9th October from 4pm-8pm" said Lisa.

#### Bookings for lunch and dinner

T: 6026 0516 or message the Gerogery Hotel Facebook page.

**To order a gift hamper from The Riverina Hamper Co**



<https://theriverinahamperco.com.au>

**Markets @ the G-Rodge Sat 9 Oct 4 - 8pm**



### COVID-19 vaccinations and your business

All Australians over the age of 12 now have access to a free COVID-19 vaccine.

It's important for you to know your rights and obligations regarding vaccinations for your workplace and your employees and understand where to find the most accurate information.



<https://business.gov.au/risk-management/emergency-management/coronavirus-information-and-support-for-business/covid-19-vaccinations-and-your-business>

**Do you have a COVID-19 Safety Plan for your business?**

To read more > page 7

#### Highlights:



**New owners at G-Rodge**  
See the potential



**Let's Do This**  
Have you had your jab?



**Business Connect**  
Locally based business support



**Who is Geoff Reardon?**  
ICN update



## Regional Buses Community Transport Trial extended

Regional Buses was founded by Alan Ofak and Matthew Kane which started operating early in 2019.

**The on-demand service is a partnership between Regional Buses and Transport for NSW. The two year trial has now been extended.**

Early 2019 the Burrumbuttock service commenced, 5 months later a Holbrook community transport service began.

**Regional Buses offers an on-demand service and not a set timetable. Operator Matthew Kane tries his best to cater to the public's need and travel when they want.**

Matthew explained "that is our point of difference, we are truly a bus company that works towards the peoples' needs and not the other way around where in the past buses are set to a timetable ....

Regional Buses travel when you want to".

Proudly Matthew reports that on the first day of operation for the Burrumbuttock service "we carried 8 passengers for the day and Holbrook's first day was 4 passengers. Both services grew very quickly from those numbers, within 18 months of starting the service we were processing over a 1,000 trips between both services a month, such is the demand from our local communities" he said.

Matthew advises numbers did drop when COVID hit but that's when the business started to offer a parcel service for people instead of traveling to keep everyone that little bit safer, Transport loved the idea so much that they rolled it out to the other on-demand services to do the same.

"The greatest thing that this service has done is helped people in country areas that have no transport and have had to rely on other people to get them around, it gives them their independence back.

Matthew shared some heartbreaking stories of how tough people have to do it in the country because they're all by themselves.

"I've talked to people that would spend between 30 to 40% of their pension per week just to get in and out of Albury, which doesn't leave a lot of money to do any living.

"There was one child that would have to

leave home at 3:30 in the morning just so they could get to school.

He said "It's been so pleasing helping these people out that are doing it so tough, the pensioners can go into Albury every day now for just \$2.50 per day on the red ticket. Now we pick up the school child at 7:30 and get them to their connecting school bus. We also transport many people to Purple Chicken and Aware Industries".

**Both services cater for all types of transport reasons, such as workers, medical appointments, essential goods and services, connecting to other transport such as trains and planes as well as school children transfers to and from school plus after school activities.**

Both services have proven to be invaluable to the communities with the amount of different reasons that people travel. The biggest challenge is fitting everyone on due to both services being so busy.

"The hardest thing that we had to overcome was developing the computer program to book everyone in and work out travel times plus reporting for Transport NSW" said Matthew.

"The company LM Software was formed and as a result the program does everything we need, this program saves me two weeks of work per month" he added.

**The business commenced with 3 employees and has grown to 6 employees, plus a new software company has emerged, LM Software mentioned above.**

The concept of this service has caught the eyes of many different shires which have contacted Matthew to help them establish a similar service.

Matthew concludes "Alan and myself had no idea what an amazing service this would become. So far it's been an incredible journey".

**Regional Buses pick up prepaid parcels for people (and businesses) in Albury and Wagga.**

**To book the service**

M: 0448 353 281 or

E: [bookings@regionalbuses.com.au](mailto:bookings@regionalbuses.com.au)





Below: The locally based BEC Business Advice team pictured at J and B's Gourmet Café



## Business Support

There has been a lot of lessons learned this year. Perhaps that globally we are in this pandemic together, and that Governments are run by people that make mistakes.

In many ways, this is like all the small businesses we have

assisted over the last year. Would we make those same decisions again? How can you make more good decisions than bad?

Perhaps getting occasional independent advice/mentoring, having your business modelled (using a spreadsheet) to really understand your business and test scenarios and making sure you keep up with current innovations?

Guess what? BEC Business Advice can help with all of that, and are keen to see you prosper.

Check out the NSW Government's Business Connect Program and the Australian Government's Digital Business Service, both delivered locally by BEC Business Advice.

<https://becadvice.com.au/access-to-free-business-advice/>

## Toolkit for disaster resilience among regional businesses launched

An online resilience toolkit has been unveiled to help regional businesses prepare for future disruptions and disasters.

The Business Community Resilience Toolkit Program is a free program delivered by [corporate2community](https://corporate2community.com) via a grant awarded through the joint-funded NSW and Commonwealth Government Bushfire Community Recovery and Resilience Fund (BCRRF).

If your business in Greater Hume Council area, you are eligible to join the program.

Registrations now open

<https://toolkit.corporate2community.com/signup/14>

The first module goes live in October 2021.



^ BEC Business Connect team attended the Women's Week promotion which involved 92 women from across Greater Hume LGA held March 2021.

Image courtesy @Lea\_Bic Photography

# INLAND RAIL

## Update

Inland Rail has finalised the reference design for enhancement works on the Albury to Illabo project. These designs are supported by the technical and environmental investigations undertaken and incorporates the feedback key stakeholders and community members have shared.

## Information session

We are holding an online session to share these proposed reference designs.

Covid-19 restrictions prevent us from holding our planned face-to-face sessions along the alignment so join us for an online presentation and hear the project team explain our proposed designs.

Date: Thursday, 7 October

Time: 11:00am – 12:30pm

Where: MS Teams

The digital link is available on our website.

## More details

While we can't meet with you face-to-face, the team is still here to answer your questions.

Please take a look at our interactive Albury to Illabo map

<https://inlandrail.artc.com.au/where-we-go/projects/albury-to-illabo/>

You can post your comments on the page. To contact the team at Inland Rail

E [inlandrailnsw@artc.com.au](mailto:inlandrailnsw@artc.com.au)  
P 1800 732 761

## What is next

The Environmental Impact Statement (EIS) will be on public exhibition for at least 28 days in early 2022.

At this time the community can have their say and provide feedback directly to the Department of Planning, Industry and Environment, who will make a final recommendation for the Minister to approve or refuse the proposed project.

## Inland Rail Sponsorships and Donations Program

**Inland Rail offers funding between \$1,000–\$4,000 for individuals and organisations in regional areas along the Inland Rail route that contribute to local and regional prosperity, wellbeing and sustainability.**

Funding supports short-term or one-off initiatives like:

- sponsoring local festivals and celebrations
- upgrading sporting facilities
- purchasing new laptops for students
- supporting health and wellbeing groups
- mentoring programs
- hosting guest speakers

Annual sponsorship rounds:

### Round 1

Applications open 1 February to 30 April

### Round 2

Applications open 1 May to 31 July

### Round 3

Applications open 1 August to 31 October

### Round 4

Applications open 1 November to 31 January

## How to apply

If you have an activity, event or project that will benefit your local community and you represent a community group or organisation that is a not-for-profit or local government body, please submit an application.

Please refer to the Inland Rail Community Sponsorships and Donations Program Guidelines for eligibility requirements, assessment processes and terms and conditions of funding.

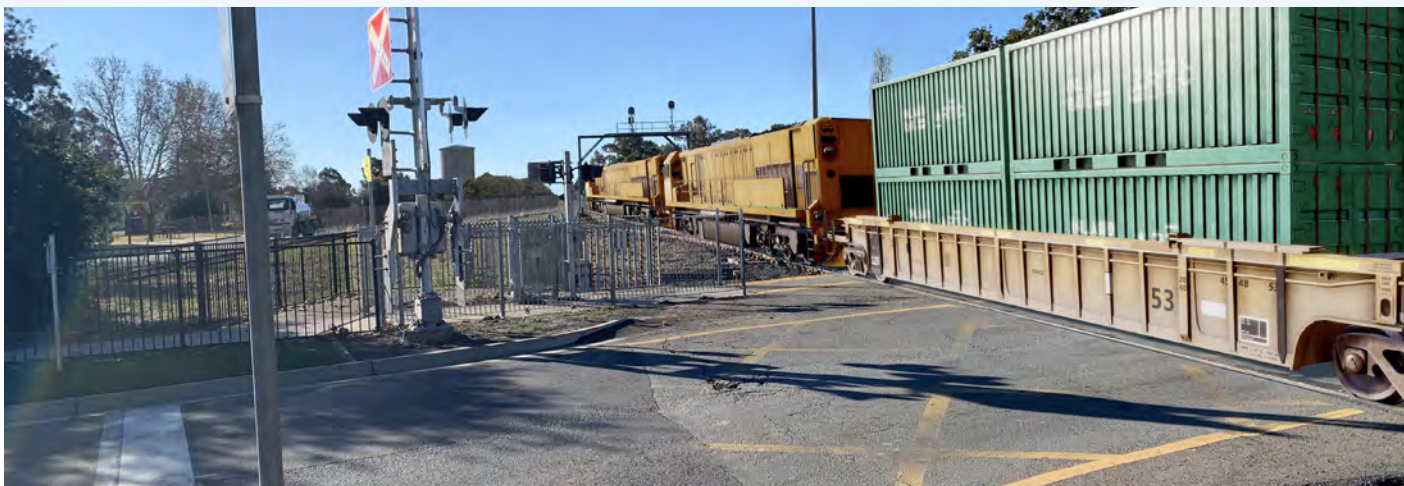
DOWNLOAD GUIDELINES

<https://inlandrail.artc.com.au/community-sponsorships-and-donations-guidelines/>

COMPLETE APPLICATION FORM

<https://inlandrail.artc.com.au/community-sponsorships-and-donations-application-form/>

Application forms must be emailed to [ircommunitysponsorships@artc.com.au](mailto:ircommunitysponsorships@artc.com.au) by 6:00pm on the due date.





# Children Centres and Family Day Care Services are OPEN

Greater Hume Children Services has continued to provide much needed child care services through its centre based services at Holbrook, Henty, Culcairn and Walla Walla in addition to the more than 60 Family Day Care educators based across the region from Batlow to Benalla.

It's been a challenging year with the impact of COVID-19 affecting all services with the many changes, cross border issues and requirements required in order to remain open, maintain services, in addition to managing health and safety risks to remain compliant.

The Culcairn Early Learning Centre successfully transitioned to Greater Hume Children Services in July and continues to provide a full range of child care.

A new van was purchased to provide additional mobile playgroup and other services across all of our delivery areas.

With skills shortages in the early childhood education sector, staff recruitment was key action; pleasingly, Council has appointed

new Centre Directors to all centre based services.

**Greater Hume Children Services Manager, Fiona Pattinson said "our focus continues to be on the children and families and being able to provide services."**

**Our service staff and educators have been amazing and continue to step up and meet all of the challenges that have been thrown at us and I would like to acknowledge and thank all of them for the valuable work they do on a daily basis."**

Demand for services remains strong with Family Day Care having a waiting list for the first time in a long time and the Holbrook centre operating close to capacity.

There are vacancies available for families who need the service for work and who want to maintain routines and consistency for their children.

Additionally, there are opportunities for new educators to work with the service particularly in the Family Day Care sector.

Enquiries T 1800 954 999

<https://www.ghchildren.com.au/Home>



## Did you know?

### Residential Sales January to March 2021 Quarter

LGA	No of sales	Median	Annual change in median
Albury	361	\$380,000	+19.12%
Wagga	364	\$398,000	+10.72%
Greater Hume	54	\$287,000	<b>+23.33%</b>

Source: <https://www.facs.nsw.gov.au/resources/statistics/rent-and-sales/dashboard>

### Building Approvals, 2020-2021

LGA	No of new houses	LGA	No of new houses
Greater Hume	87	Albury	565
Federation	74	Wagga Wagga	377

Source: ABS Building Approvals, Australia, July 2021

## Land Development in Greater Hume

### Holbrook and Jindera Industrial Estates

Council is now progressing the next stages of industrial land development at Holbrook and Jindera estates.

New enquiries for industrial land in Greater Hume are welcomed.

Contact Marg Killalea T: 02 6036 0100.

## NSW Government Support



Support & End Date	What is it?	What is it worth?
JobSaver closes 18 October 2021	Weekly cash support for businesses with over \$75,000 in turnover that have seen a 30% reduction in turnover, due to the public health orders, from 18 July 2021 onwards	\$1,000 a week if you have no employees or the higher of \$1,500 or 40% of your payroll for employers
Micro-Business Grant - Closes 18 October 2021	Fortnightly payment to businesses with turnover between \$30,000 and \$75,000	\$1,500 per fortnight
2021 Covid-19 Business Grant –closes 1 October 2021	If you're a business, sole trader or not for profit and impacted by Covid-19 restrictions	One off grants of \$7,500, \$10,500 or \$15,000
2022 Payroll Tax Concessions	Extended lodgment and payment dates for 2021 payroll tax and a 50% reduction for employers with below \$10 million in wages for 2022 payroll tax	50% reduction in payroll tax liability
Small Business Fees and Charges Rebate - Closes 30 June 2022	Small businesses under \$1.2 million in payroll can access a rebate for NSW and Local Government charges such as rates, event and food authority fees	Up to \$1,500 rebate
Land Tax Relief - Available to 31 December 2021	Reduction in land tax for commercial and residential landowners that provide a rent reduction between 1 July 2021 and 31 December 2021 to an eligible tenant that is experiencing financial distress as a result of Covid-19	The land tax concession will be available for up to 100% of the landowners 2021 calendar year land tax liabilities

More Info:

<https://www.service.nsw.gov.au/campaign/covid-19-help-businesses>



## Australian Government Support

Support & End Date	What is it?	What is it worth?
COVID-19 Disaster Payment – Closes 9 October 2021	A support payment for workers who could not work due to a state COVID-19 public health order	A lump sum payment between \$200 and \$750

Pandemic Leave Disaster Payment* Open	<p>This program provides workers with a payment if they cannot earn an income because they have to self-isolate, quarantine or care for someone with COVID-19</p> <p>Lump sum payment of \$1,500 for each 4 day isolation period</p> <p>People who need to self-isolate, quarantine or care for someone with Covid-19</p> <p>*Not everyone who lives in NSW can get the Pandemic Leave Disaster Payment</p>	
JobMaker Hiring Credit Scheme Closes 6 October 2022	<p>Provides employers with incentive payments for hiring job seekers aged 16 to 35</p> <p>\$200 a week for eligible employees aged 16 to 29 years</p> <p>\$100 a week for eligible employees aged 30 to 35 years old</p>	
\$150,000 Instant Asset Write-Off	<p>The \$150,000 Instant Asset Write-Off provides businesses with an asset write-off. Assets must cost less than the instant asset write-off threshold and be purchased and used in the year the write-off is claimed.</p>	
Backing Business Investment	<p>Eligible businesses may be able to deduct the cost of new depreciating assets at an accelerated rate.</p>	
SME Recovery Loan Scheme Loan of up to \$5 million Closes 31 Dec 2021	<p>The SME Recovery Loan Scheme enables small and medium-sized enterprises (SMEs) to access funding to get through the impact of coronavirus, recover and invest for the future. The Australian Government works with lenders to:</p> <ul style="list-style-type: none"> <li>enhance lenders' ability to provide cheaper credit</li> <li>ensure that eligible businesses have access to finance to maintain and grow their business.</li> </ul> <p><a href="https://treasury.gov.au/coronavirus/sme-recovery-loan-scheme">https://treasury.gov.au/coronavirus/sme-recovery-loan-scheme</a></p>	

More Info:

<https://business.gov.au/risk-management/emergency-management/coronavirus-information-and-support-for-business/covid-19-financial-support-for-small-business>

# Come On Greater Hume - Let's Do This

Due to slow vaccine take up at the time, early September Mayor Cr Heather Wilton recorded her message to encourage residents to 'get the jab', which has been posted to Council's Facebook page; the message has been well supported by local media outlets.

Mayor, Cr Heather Wilton reports "as at 26 September 2021, Greater Hume first dose vaccinations hit 79.6%, up from 63.1% on 5 September.



"I want to thank Greater Hume residents who have answered the call to get vaccinated. But there is more to do, if you haven't had your first jab please as a matter of urgency book a vaccination appointment locally or book online".

<https://www.nsw.gov.au/covid-19/health-and-wellbeing/covid-19-vaccination-nsw/get-your-covid-19-vaccination-nsw>



^ Mayor Cr Heather Wilton  
"Have you had your jab?" campaign



## COVID-19 Safety Plan for NSW businesses

Having a COVID-19 Safety Plan in place will help to protect your staff, workers, customers and visitors.

Develop a COVID-19 Safety Plan specific to your industry and register so customers know your business is COVID Safe.

COVID Safe businesses and organisations are committed to getting back to work while protecting the community and preventing the spread of COVID-19.

The NSW Government has created COVID Safety Plans templates for many specific industries, including:

- Agriculture
- Construction and tradespeople
- Manufacturing and warehousing
- Transport freight and logistics

<https://www.nsw.gov.au/covid-19/covid-safe#industry>

## A workbook for small businesses to navigate COVID-19 complexity

Deloitte has developed a useful resource The Small Business Roadmap for Recovery & Beyond Workbook has been designed to support business owners as you navigate through recovery. It aims to take some of the complexity out of the situation and give you the tools you need to prepare for tomorrow.

To bridge the crisis and lay a foundation to thrive, three phases have been identified for businesses to work through:

**Reflect:** Define what's next for your business. Think about what has worked, what you have learned, and what has been missed in your response to COVID-19.

**Restart:** Manage your reopening. Determine where to focus first and what's required to meet your most pressing business priorities.

**Revitalise:** Use these new business priorities to reconfigure and revitalise your business. This requires a balance between ongoing and evolving needs.

The workbook addresses these phases across your business, with actions

and considerations across customers, cashflow, supply chain, workforce, digital enablement and workplace.

By working through a plan for recovery, this tool provides a simple way to manage your business continuity and look for opportunities to thrive.

Download the workbook  
<https://bit.ly/3lpcqB5>





## Who is Geoff Reardon?



Geoff Reardon is Regional Manager for Murray Riverina ICN.

The Industry Capability Network (ICN) is funded by NSW Government to assist communities to increase economic prosperity. ICN introduce businesses of all sizes to projects large and small across

NSW, to a network of experienced industry procurement and supply chain specialists. Geoff works as a connector between local business and local and national projects. His role revolves around assisting large scale project managers source local companies with the skills and ability to meet the needs of the project.

Currently, there are a significant number of major projects coming to the region including Inland Rail network, Snowy 2.0, Energy Connect and the Newell Highway upgrade and large scale solar farms. Thinking broadly, these projects require 'anything' from catering, cleaning, accommodation, transport, through to major steel fabrication and civil engineering capability.

To become informed of these opportunities for growing your business, you need to register on the ICN Gateway. If you want to pursue any of these opportunities please reach out to Geoff Reardon.

**Latest news - TransGrid awarded to UGL Engineering Pty Ltd the contract for the Maragle Switching Station and Transmission Line. This is a \$90 Million project involving the construction of a 330kV Switching station and 9Klms of 330 Kv Transmission line through the Bago forest.**

Business wishing to register an EOI should do so on ICN Gateway

<https://gateway.icn.org.au/project/4785/maragle-switching-station-and-transmission-line?st=projects&rl=eyJ0aXRzZSI6IkJhY2sgdG8gc2VhcmNoIHJlc3VsdHMiLCJ1cmwiOiJcL3Byb2pY3RcL3NIYXJjaFwvNjEzZmNIYWY5OWM1ZSJ9>

More info:

M: +61 (0) 402 632 027

E: greardon@icnsw.org.au

<https://www.icn.org.au/>

## Business Email Compromise Scams

In August 2021, a local Rabobank branch reported incidence of recent fraud attempts in the region that have included losses as a result of clients falling victim to Business Email Compromise Scams.

These are very sophisticated scams, where the scammers may intercept legitimate supplier invoices before they reach your email inbox, and replace them with an identical invoice, only with new banking details. If your email account is compromised, the scammers may add a rule to your mailbox, which diverts certain emails to a different folder or external email address.

The scammers then update payment details contained in any invoices received and resend the emails to you.

To learn more about business email compromise scams <https://www.cyber.gov.au/acsc/view-all-content/publications/protecting-against-business-email-compromise>

## Become Cyber Secure

Business Connect is running Cyber Secure webinars in October.

Webinars repeated twice for those who do not want to watch a recording but prefer to sit on one live. **Business Connect encourages businesses to REGISTER so they can make sure they get the recording sent to them.**

Safe Guard your sensitive Data - 5 /10/2021 @ 1pm

<https://bit.ly/2ZEqT5a>

Don't Lose Everything to Cyber Criminals - 6/10/2021 @ 1pm

<https://bit.ly/3o9LPLz>

Data Protection & Data Breach Reporting - 12/10/2021 @1pm

<https://bit.ly/3zNqhGD>

Safe Guard your sensitive Data - 19/10/2021 @1pm

<https://bit.ly/3EXPW37>

Don't Lose Everything to Cyber Criminals - 20/10/2021 @ 1pm

<https://bit.ly/3CV31bY>

Data Protection & Data Breach Reporting - 26 /10/2021 @1pm

<https://bit.ly/3zNv5fp>

## The Cyber Security Assessment Tool

It can help you identify what your business is doing well and where your business can improve when it comes to cyber security. You can download the recommendations as a PDF. Link to the tool is shown below.

[https://digitaltools.business.gov.au/jfe/form/SV\\_cRMe9MTmaq6QmrA?ref=bcpMurrayHumeCS](https://digitaltools.business.gov.au/jfe/form/SV_cRMe9MTmaq6QmrA?ref=bcpMurrayHumeCS)



# What is the Carbon Emissions Footprint of the Greater Hume LGA ?

## 657,000 t Co2e

Agriculture is a major contributor to emissions at 472,000 t CO<sub>2</sub>e or 71% of emissions in 2019.

Greater Hume is a regional area that is moderate in size relative to the state average and has a low urban density.

Its major emissions source is agriculture, due to the community's relatively large amount of agricultural activity and low population.

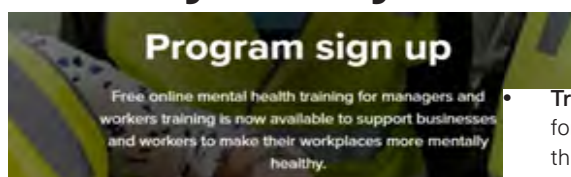
The second largest source of emissions is electricity consumption.

Source: <https://snapshotclimate.com.au/>



## SAFework NSW

### Mentally Healthy at Work



In late July the **free training** was updated to help clarify the legal responsibilities around psychological health in the workplace (in line with Code of Practice).

Apply now for training sessions customised to suit the different types of roles in your workplace.

- **Training for business owners and leaders:** Leading a mentally healthy workplace - this shows you how to design safe workplaces and integrate mental health into all areas of your business, which will increase productivity and save you money.

- **Training for managers:** Managing for team wellbeing - recently updated, this training will help you build your wellbeing leadership skills, show you how you can support others (and yourself) and understand your legal responsibilities at work.
- **Training for individuals:** Your mental health at work training will help you manage your own mental health at work and show you how you can support others. All staff can contribute to a safe and productive workplace.

More info

<https://www.nsw.gov.au/mental-health-at-work#our-services>



## Current demand for land/homes in Greater Hume LGA & limited supply

### What can Council do to assist?

Buyer interest has surged in parts of regional Australia as the pandemic continues to drive demand for property in lifestyle locations, including the Greater Hume Council area.

This view is supported by the burgeoning interest in our area evidenced by:

- an annual change in the median house price in Greater Hume LGA increasing by 23.33%, the median house price of \$287,000 for the Greater Hume area was reached in March 2021 quarter.
- A three bedroom home now attracts a median rent of \$300 per week.



Source <https://www.facs.nsw.gov.au/resources/statistics/rent-and-sales/dashboard>

Council has identified over 340 parcels of vacant residential allotments across the Greater Hume Council area and has recently written to these owners to highlight the strength of the real estate market at the present time, and to encourage those owners to consider developing their parcel(s) of vacant land, or to place the vacant land on the market for sale.

"I encourage you to talk to a local agent or any real estate agent at the present time and they will confirm the strong demand for real estate in our towns and villages and the challenge of limited supply of properties on the market to satisfy demand" said Economic Development Coordinator, Marg Killalea.

At the same time, Council encourages new residents to make Greater Hume their home to grow our population, grow our own workforce and grow our local communities" added Mrs Killalea.

## Register for the Women in Business program

Women in Business is a NSW Government and TAFE NSW initiative for women looking to start or grow a micro or small business.

The program is offered online through TAFE Digital and is fully subsidised for eligible applicants. You can select topics to suit your specific needs, and new topics covering the latest trends in Australian business are regularly added.

You're also able to access a Service NSW Business Concierge. They can help you understand government requirements such as the licences, permits and approvals needed to start and operate a business

<https://www.tafensw.edu.au/womeninbusiness>

To book a Business Concierge

T: 13 77 88



^ Woman in Business - Virginia Scholz



^ Woman in Business - Jo Takle





A total of 18 businesses in Greater Hume local government area are registered for Dine and Discover promotion.

**Dine & Discover has been extended until 30 June 2022.**

The latest snapshot on the program operating in Greater Hume LGA:

- \$65,239 has been redeemed for 'dine'
- \$725 has been redeemed for 'discover'

Number of Dine & Discover Vouchers redeemed so far:

Holbrook - 884; Jindera - 793; Culcairn - 384; Gerogery - 236; Henty - 144; Walla Walla 109 and Walbundrie - 108.

**It's not too late to register, you must:**

- have an active ABN and be registered for GST – ensure your details are correct on the Australian Business Register before registering
- operate in NSW
- be registered as COVID Safe and have a COVID-19 Safety Plan in place
- operate in one of these eligible industries:

cafés and restaurants - pubs, taverns, wineries, bars and clubs - scenic and sightseeing transport - cinemas - museums, galleries and historic sites - zoos, botanic gardens, wildlife parks and nature reserves - performing arts operations, theatres and entertainment centres - amusement, theme and water parks - recreational activities such as go-karting, indoor climbing, mini-golf, billiards, bowling or ice-rinks - outdoor adventures - travel agencies and tours.

<https://www.service.nsw.gov.au/campaign/dine-discover-nsw>



## Greater Hume Shire Councillors



^ Back Row: Cr Tony Quinn, Cr Annette Schilg, Cr Doug Meyer OAM, Cr Jenny O'Neill  
Front Row: Cr Matt Hicks, Cr Lea Parker, Cr Heather Wilton, Cr Denise Knight, Cr Terry Weston

**Mayor, Cr Heather Wilton** Holbrook  
hwilton@greaterhume.nsw.gov.au  
02 6036 2610

**Deputy Mayor, Cr Doug Meyer, OAM** Henty  
dmeyer@greaterhume.nsw.gov.au  
0429 690 999

**Cr Matt Hicks** Jindera  
mhicks@greaterhume.nsw.gov.au  
0419 602 780

**Cr Jenny O'Neill** Jindera  
joneill@greaterhume.nsw.gov.au  
0438 263 417

Cr Denise Knight Jindera  
Retired from Council on 20 Aug 20

**Cr Tony Quinn** Gerogery West  
tquinn@greaterhume.nsw.gov.au  
0429 674 933

**Cr Annette Schilg** Walbundrie  
aschilg@greaterhume.nsw.gov.au  
0429 906 401

**Cr Lea Parker** Holbrook  
lparker@greaterhume.nsw.gov.au  
0427 362 723

**Cr Terry Weston** Culcairn  
tweston@greaterhume.nsw.gov.au  
0407 933 127



Your local Business Connect  
Advisor is Kevin Bascomb  
E: kbascomb@becadvice.com.au  
M: 0402 857 041  
W: <https://becadvice.com.au>



## Buy Local in Greater Hume



## What is the difference between business, trading and entity (legal) names?

### Business names

The national business names registration service has replaced state and territory services, meaning you only need to register your business name once with a single national register, managed by Australian Securities & Investments Commission (ASIC). If your business does not operate under its own entity name (e.g. GLM Pty Limited) or your name (e.g. Jane Smith), you will need a registered business name.

To apply for a registered business name you will need to have (or be in the process of applying for) an Australian Business Number (ABN).

If you have registered a new business name, the Australian Business Register (ABR) and ABN Lookup will automatically update with this information.

To register for, update or cancel a business name, you will need to go to the ASIC website.

### Trading names

The use of trading names will cease by 31 October 2023. This gives affected businesses more time to inform their customers, suppliers and other stakeholders of any changes to the name that they use to conduct their business.

This extended transitional period will provide additional time for the business community to take steps to register your business name with the Australian Securities and Investments Commission.

### Entity (legal) names

This is the name that appears on all official documents or legal papers. Depending on the entity type, it may be one of the following:

- Individual/sole trader – your name
- Australian private company – the name registered with ASIC
- Partnership – the names of all the partners
- Superannuation fund – the name as shown on the superannuation fund trust deed
- Trust – the name of the trust as shown in the trust deed

Source:

<https://abr.business.gov.au/FAQ/Names>



## Get the latest community and economic stats

Council now subscribes to the REMPLAN Community Profile and Economic Profile for Greater Hume Council area, with free public access a feature.

REMPPLAN Community delivers comprehensive insights into the unique demographic characteristics of the Greater Hume area.

REMPPLAN Economy is our local economy at a glance. Get headline stats on local population, employment, output, tourism and gross regional product (GRP).

To view the profiles google **remplan greater hume**

## Advice to people experiencing financial hardship

They're supporting their local sports teams, teaching a trade to a younger generation, and building a relationship with their employees and regular customers. They're passionate about what they do and about helping to grow their community.

Now with multiple, ongoing lockdowns nationwide, they need our support back.

Small business financial counselling is always free, confidential, impartial, and non-judgemental. Financial Counsellors are qualified professionals. They provide information, advocacy, informed options, and advice to people experiencing financial hardships.

To speak with a small business financial counsellor, please contact the Small Business Debt Helpline on 1300 413 828.



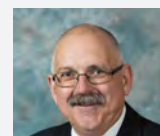
**SMALL  
BUSINESS  
DEBT HELPLINE**  
1800 413 828  
[sbdh.org.au](http://sbdh.org.au)

## Business Contacts

### Editor Business News



Marg Killalea - Economic Development Coordinator



Steven Pinnuck - General Manager

### Council Office

#### Holbrook Office

General Manager / Corporate Services/ Community Services / Economic Development

39 Young Street, Holbrook, NSW 2644

P 02 6036 0100

E [mail@greaterhume.nsw.gov.au](mailto:mail@greaterhume.nsw.gov.au)

## Service NSW for Business

Service NSW for Business offers **personalised support** to small business owners as they start, run and grow their businesses, and as they adapt and recover in times of crisis.

Contact NSW Business Concierge Navpreet Kaur for free, step-by-step guidance over the phone and via email.

Navpreet Kaur M: 0409 125 274



▲ NSW Service Business Concierge - Navpreet Kaur