

# THE JINDERERA NEWS

Jindera & District FREE Local Newsletter  
Distributed on or by the first Saturday of the month  
Published by Rural Care Link Inc

## Jindera Community Carols

will be held on  
Friday 13th December  
at 7.30pm

at the  
Jindera Village Green



Food available from 6.30pm  
Glo candles available

Special Guests and  
School Performances



Alcohol Free Family Event - All Welcome!

Brought to you by the

Joint Ecumenical  
Churches of Jindera





## OFFICE HOURS

MON – 10am to 3.30pm – Community Development Officer  
 TUES – 10am to 3.30pm – Community Development Officer  
 WED – 10am to 3.30pm – Community Development Officer  
 THU – May open depending on volunteer availability  
 FRI – May open depending on volunteer availability  
 Closed Saturday and Sunday

**OFFICE IS CLOSED EACH DAY BETWEEN 1.00-1.45 PM**

We apologise for any inconvenience this may cause but remain able to assist you if you wish to **PHONE 6026 3001, 0411 282320 or 0435 957931** and Leave a Message

## Rural CareLink - Op Shop

Normal hours of business

MONDAY	10.00am - 1.00pm
TUESDAY	10.00am - 4.00pm
WEDNESDAY	10.00am - 4.00pm
THURSDAY	10.00am - 4.00pm
FRIDAY	10.00am - 4.00pm
SATURDAY	10.00am - 1.00pm

**PLEASE NOTE THAT THE OP SHOP IS CLOSED FOR LUNCH BETWEEN 1:00 and 1:45 pm**

## Lions Christmas Cakes now available in Jindera.

Lions Christmas Cakes are an important fundraising project of Lions Clubs in Australia. Funds raised are donated to projects that benefit the community locally, nationally and internationally.

Cakes are full of fruit and are of excellent quality.

Cakes are available at the following locations: Jindera IGA  
 Jindera Hotel  
 Jindera Post Office



We Serve

1.5k priced at \$17.00 - 1k priced at \$13.00

For more information contact Greg Rooney on 60261970.

*This is a Jindera Lions Club project.*



## Friends in Action (Caritas) Diary: 2019 - 2020

*A Group that can offer emotional and spiritual support and opportunity for growth through caring and personal relationships.*

1 December **Christmas Party:**  
 6pm, Hovell Tree Inn. (Hovell Bar & Grill).  
 Contact: Vickie Priscina 0428 406060, or Jane Barlow 0438 262480

13 January **Planning Meeting,** 7pm Jindera Pub.

12 February **AGM and Eucharist,** - St Pauls 10am.

**Leader:** Jane Barlow 0438 262480      **Assistant Leader:** Roz Phillipson 0417 457122  
**Secretary:** Annette Brown 0456 370257      **Treasurer:** Bev Blair 60 262431

*Friendship in Action*

Jindera News is published monthly (except January) by Rural Care Link Inc. All profits from advertising and donations are used to support the activities of Rural Care Link Inc. Contributions and advertisements are invited from groups and individuals and should be negotiated with and forwarded to the Editor. The editorial team reserves the right not to publish any article or to modify the presentation to suit the style of the newsletter.



# St. Mary's Catholic Church, Jindera.

Parish Priest – Fr. P. Murphy  
Assistant Priest – Fr. C. Heffernan

## MASS TIMES

9.00am Sundays and 9.20am Fridays  
during School Terms

*Confessions available before Mass.*

# Gateway LIFE CHURCH

## 5PM WEEKLY SUNDAY SERVICES JINDERA COMMUNITY HUB

Starts Sunday February 10  
Call (02) 6025 6332 for more!  
[gatewaylifecyclechurch.org.au](http://gatewaylifecyclechurch.org.au)



### ANGLICAN PARISH OF NORTHERN ALBURY

#### St. PAUL'S JINDERA

2nd & 4th Sunday – 10.30am

PRIEST:

Archdeacon Catie Inches-Ogden

MOBILE:

0417 552 180

PARISH OFFICE:

6040 6457

WEBSITE:

[www.anglicannorthernalbury.org.au](http://www.anglicannorthernalbury.org.au)



## Lutheran Church of Australia

### SUNDAY SERVICE TIMES

BETHLEHEM CHURCH - 9.00AM  
Adams St Jindera

ST JOHNS CHAPEL - 10.30AM  
ST Johns School Hall

You're welcome at

# Lavington Baptist Church

Youth Group- 13 years +  
7:30 - 9:30pm

Good News Club 9 - 12 years  
6 - 7:30pm

Sparks 4 - 8 yrs  
6 - 7:30pm



[www.lavingtonbaptistchurch.com](http://www.lavingtonbaptistchurch.com)

Friday Nights during school terms  
450 Parnall St, Lavington  
TEL: (02) 60 215860



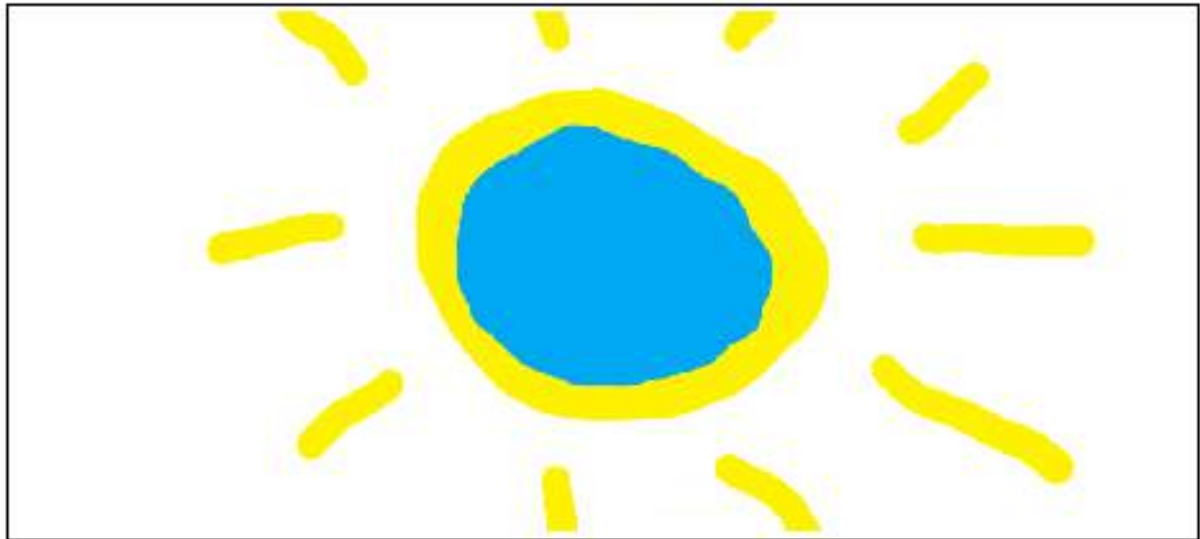
in Greater Hume Shire



## Buy local this Christmas

An initiative of Greater Hume Council.

## What's On in Jindera: December 2019



- December** \*Red Things, Art Installation, RCL OpShop, Emma Stocker
- Mon-Sat** \*10am RCL OpShop, Jindera Hub
- Wed 4** \*1pm *Stitch & Chat Craft*, Anglers Clubhouse, Judy Gray
- Fri 6** \*8am *Jindera Walkabout* tm Wellness Program: Jindera Hub  
\*10am *Community Exercise*, Jindera Hub, Ruth 60263806
- 
- Mon-Sat** \*10am RCL OpShop, Jindera Hub
- Sun 8** \*10am Jindera Skate Park Opening, Greater Hume Shire Council
- Tues 10** \*New Wellness Program, Jindera Hub, T: 047559407
- Thurs 12** \*12noon *Carer's Group Lunch*, Michelle 60215882
- Fri 13** \*8am *Jindera Walkabout* tm Wellness Program: Jindera Hub  
\*10am *Community Exercise*, Jindera Hub, Ruth 60263806  
\*New Wellness Program, Jindera Hub, T: 0475594073  
\**Jindera Community Christmas Carols*, Jindera Village Green
- Sun 15** \*2pm *Christmas Wreath Making*, Jindera Pioneer Museum
- 
- Mon-Sat** \*10am RCL OpShop, Jindera Hub
- Tues 17** \*New Wellness Program, Jindera Hub, T: 047559407
- Fri 20** \*8am *Jindera Walkabout* tm Wellness Program: Jindera Hub
- Sat 21** \*10am OpShop Open. Last day of the year. Closes 1pm

For further information/bookings, or to feature your community event in the next 'What's On' guide, please contact *Rural Care Link* on:

Tel: 02 6026 3001 Mob: 0475594073

E: [communitydevelopment@ruralcarelink.org.au](mailto:communitydevelopment@ruralcarelink.org.au)

PO Box 88, Jindera, NSW 2642.

The Jindera Hub, 83 Urana Street, Jindera NSW 2642

**JINDERA NEWS – CONTACT US ON: [jinderanews@ruralcarelink.org.au](mailto:jinderanews@ruralcarelink.org.au)**



## IS LOOKING FOR A NEW EDITOR

The current editor/coordinator will be stepping down in March 2020.

This is a great opportunity for someone who has the Jindera community at heart and wants to further community spirit by informing people about what's happening in their neighbourhood.

Ideally you would have or be able to attain the following:

- familiar with Microsoft Publisher or similar software & the production of multi-page newsletters
- oversee the monthly production of the Jindera News
- liaise with local clubs and community groups regarding news items
- liaise with customers by helping with and quoting for advertising space
- assist in sourcing and editing local stories for inclusion
- make decisions regarding the inclusion of ads, news items and photos for publication
- work with the assistant editor/compiler
- produce a monthly billing sheet for the Rural Care Link Treasurer

The Jindera News is published at the end of each month and the final production is printed by a local printer. There are 11 editions each year as there is no January edition.

This role of editor/coordinator works under the auspices of Rural Care Link and requires you to be a member of the Rural Care Link management committee. This is effectively an autonomous role presenting a multi-page local newsletter with the need to make independent decisions regarding published content.

*If you have been wanting to get involved in the community and this style of community service is something you feel you could do, please contact the editor to discuss the role, at: [jinderanews@ruralcarelink.org.au](mailto:jinderanews@ruralcarelink.org.au)*

Rural Care Link Inc.,

CHRISTMAS DINNER WITH THE COMMUNITY

St. Johns School Hall, Adams Street, Jindera

If you were going to spend your Christmas Dinner alone this year, you are invited to join us at 12.30, Christmas Day for a Christmas Lunch, **free of charge.**

This is being provided so that people on their own are able to share the Celebration of Christmas and what Christmas can mean when shared with friends you have just met.

**NUMBERS WILL BE LIMITED**

Please **REGISTER** for your place at the table by phoning :

Denise Knight, Secretary, Rural Care Link on 0411 282320

**BY Wednesday, 18<sup>th</sup> December.**

**FOR FURTHER DETAILS OR TO MAKE A DONATION TO THIS EVENT**

Please phone 0411 282320 or email [dosb1405@gmail.com](mailto:dosb1405@gmail.com)





*THE JINDERA OP SHOP VOLUNTEERS WOULD LIKE TO THANK EVERYONE WHO HAS DONATED GOODS TO THE SHOP OVER THE PAST 12 MONTHS.*

*THE PROCEEDS OF THESE GOODS HAVE GONE TOWARDS HELPING MANY PEOPLE IN THE AREA AS WELL AS SPONSORING THE CANCER EXERCISE CLASSES, THE FIRST IN THE REGION.*

*UNFORTUNATELY WE ARE UNABLE TO TAKE SCHOOL UNIFORMS ANYMORE SO PLEASE PASS THESE ON TO YOUR LOCAL SCHOOLS.*

*WE STILL REQUIRE VOLUNTEERS TO WORK IN THE SHOP, SO IF YOU HAVE A DAY OR HALF A DAY A WEEK, COME ALONG AND JOIN US.*

*DONT FORGET TO CHECK THE NEW OPENING TIMES FOR 2020.*

*WE WISH EVERYONE A VERY HAPPY AND SAFE CHRISTMAS AND NEW YEAR AND WE LOOK FORWARD TO SEEING EVERYONE IN 2020.*

*Colleen Lord OAM, OP Shop Coordinator.*



**Rural CareLink Jindera along with One Door Mental Health would like to invite all carers to a Christmas lunch.**

**Where: Thurgoona Golf Club**  
**Time: 12 midday start**  
**Date: December the 12<sup>th</sup> 2019**  
**Cost: Free**

**Please RSVP by 4<sup>th</sup> December to  
Michelle 0481 010 728 or  
Rural CareLink Jindera 02 6026 3001**



## ARE YOU INTERESTED IN JOINING OUR MANAGEMENT COMMITTEE?

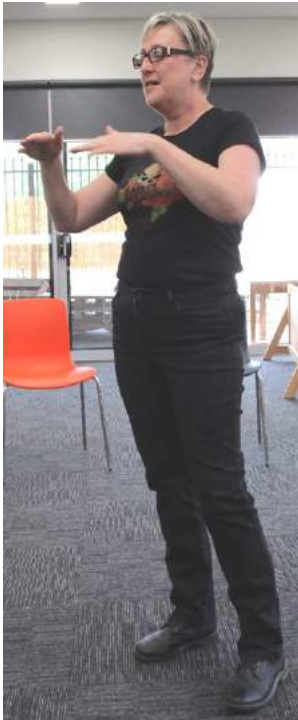
- ★ We meet once a month at the Jindera Hub.
- ★ We are a Committee of eight whose function is to work with our Volunteers in the Opportunity Shop which is our major source of funds.
- ★ We employ a Community Development Officer who organises a variety of workshops and community activities
- ★ We provide support and referrals to community members in need
- ★ We publish the Jindera News and manage the annual Jindera Garage Sale.

**Our Annual General Meeting is scheduled to be held in March, 2020.**

If you are interested in possibly joining us, please contact our Chairman, Peter Knight (0435 957931), Deputy Chairman, Colleen Lord (0429 960616) or Secretary, Denise Knight (0411 282320) and we can provide any information you might need.

### *Community Development Report*

What an active & creative October and November we had. *Jindera Walkabout tm* walkers stepped out in October. Colleen & the crew continue to make this a great way to start Friday mornings.



Sue-Ellen White's *Community Spring Sing*, was a soulful way to spend an October afternoon, singing & sharing nourishing food. With Sue-Ellen's inspiring voice & leadership, we learnt beautiful culturally diverse songs & harmonies. Can't wait for the next one!

In November, food continued to nourish the soul, with Brian Miller's amazing expertise as chef & educator in *Men's Creative Cooking Class*. What a sensational day! The men had a wonderful time, professing to share their culinary expertise.

Wonderful creative, Judy Gray, brought out the Christmas spirit in *Christmas Card Making for Ladies*, in a delightful workshop, at the Angler's Clubhouse. Now we all feel like sharing & sending cards to loved ones!

**Community Spring Sing with Sue Ellen White, of local band *Whiteline*. An inspiring way to spend a Saturday afternoon. We look forward to another Community Sing!**

In December, in keeping with the theme of Red Bows decorating the Greater Hume Shire, I'll be creating an art installation at the Rural Care Link OpShop.

Looking forward to seeing you there and at the Jindera Skate Park opening in December. Rural Care Link will present a prize from Timmy G's Skate Shop, Albury!

Thanks to all our workshop leaders, Cade & Heather at Conway's Printing, Kevin at St John's School, & the most amazing volunteers a community could have – RCL Committee & fabulous friends in the RCL Op Shop.

Thanks to all participants, who join in, have fun & try new things . 😊

Wishing you a magical festive season!

*Emma Stocker,*

*Community Development Officer, Rural Care Link*

Suggestion of the Month. (From the Suggestion box, outside the RCL office): Junior Golf!





# JINDERA PUBLIC SCHOOL

Contemporary Quality Learning with that country feel!



Principal: Emma Andrews | Assistant Principals : Des Knight & Michelle Parker

phone: 60263280 email: jindera-p.school@det.nsw.edu.au website: www.jindera-p.schools.nsw.gov.au

## CULTURE OF LEARNING - Kindergarten 2020



Our class of 2020 have been busy learning about big school and forming new friendships.

## CULTURE OF LEARNING - Fire safety



Jindera Rural Fire Brigade visited the school recently to teach the students about fire safety.

## CULTURE OF LEARNING - Proud and Deadly Award



Congratulations to Zane, Caiden, Billie and Alex who received a Proud and Deadly award. These awards are held every year to celebrate the achievements of Australian Aboriginal and Torres Strait Islander students.



Spring clean  
your home loan

**2.88%** PA\*  
2 YEAR FIXED INTRO PACKAGE RATE

**4.11%** PA\*  
COMPARISON RATE

[humbank.com.au/2yr](http://humbank.com.au/2yr)

\*Visit [humbank.com.au/2yr](http://humbank.com.au/2yr) for T&Cs. Rate correct as at 15 October 2019, only available to owner occupied loans and subject to change without notice.  
\*Comparison rate based on a secured loan of \$150,000 over 25 years.  
WARNING: This comparison rate is true only for the comparison given and may not include all fees and charges. Different terms, fees or other loan amounts might result in a different comparison rate. Terms, conditions, fees, charges and normal lending criteria apply. Hume Bank Limited ABN 85 051 888 556 AFSL and Australian Credit Licence No. 244248.



## The Red Bow Project

*Keep an eye out.*

Red bows will start appearing in the main streets of Culcairn, Henty, Holbrook, Jindera and Walla Walla.

The idea of the red bows is to decorate the main streets of our five towns during the festive season, and send a welcoming message to all.

Greater Hume Council's aim is to lift up community spirits this year during these worsening dry times, and to encourage travellers, and our local communities



to stop and shop, and buy local in our shire, especially over the festive and holiday season.

The initiative is in response to the impacts of drought being felt across NSW and in all parts of the regional economy, including retail and small business.

community volunteers from The Rotary Club of Holbrook; Culcairn, Henty and Walla Walla Community Development Committees and Henty and Jindera Lions Clubs.

So enjoy the red bows and remember to support our local businesses.

For enquiries about the project, contact Marg Killalea, Executive Assistant Governance & Economic Development, Greater Hume Council, T: 6036 0103.



The project is made possible by Riverina Water Community Grants Funding, Greater Hume Council and com-

*Making Red Bows at Jindera.  
Charlie Leaney, Jan Leaney and Lorraine*





## Jindera CWA News

Members of Jindera CWA will hold their December meeting, Wednesday 4 December, at the home of Member Judy Steer and they will celebrate with a Christmas Luncheon to follow the monthly meeting

Murray Group Cultural Christmas Celebration will be held on Thursday 21 November at The Elms Motel, Tumbarumba - 12 noon for 12.30pm - a Traditional Christmas Dinner will be enjoyed by 4 Jindera Members who will be travelling to Tumbarumba to celebrate with other Members of Murray Group.

Lyn Jacobson a Member of Pleasant Hill CWA Branch has been busy organising, with other Members of CWA and Friends, Pamper Packs for Christmas gifts for our Ladies of the Land who are presently doing it tough.

The Members and Friends will be at St. James Anglican Church, Lavington on Monday 25 November to pack the 500 Packs for distribution to the devastated drought areas of NSW - delivery by - trucks - people who have volunteered their time and vehicles. We wish them safe travel and a great time of distribution to all in the drought areas.

Jindera CWA Members would like to wish the Community a Very Blessed, Joyous and Happy Christmas and May the New Year Be a Peaceful and Rewarding Time.

Yours in CWA Friendship and Fellowship,  
*Helen Glachan*

*Join us this*  
**Christmas**  
*as we celebrate Jesus birth*

<i>Gerogery Carols</i> <b>22 December</b> 6.30pm followed by a BBQ tea Please bring a salad to share	<i>Jindera Carols</i> <b>13 December</b> 7.30pm. BBQ from 6.30pm Jindera Village Green
---	---

*Christmas Eve Services, 24 December*

Bethlehem Lutheran Church Jindera 6pm  
St Peter's Lutheran Church, Gerogery 6pm  
Holy Cross Lutheran Church Burrumbuttock 8pm

*Christmas Day Services, 25 December*

Holy Cross Burrumbuttock Lutheran Church 8am  
St John's Chapel, Jindera 10am

*New Year's Eve 31 December*

Bethlehem Lutheran Church Jindera 7.30pm

---

<i>Trinity Lutheran Church</i> Bethel Rd, Bethel	<i>St Peter's Lutheran Church</i> Glenellen Rd, Gerogery West
<i>Bethlehem Lutheran Church</i> Adams St, Jindera	<i>Holy Cross Lutheran Church</i> Howlong Rd, Burrumbuttock

**Burrumbuttock Lutheran Parish**  
For more information please contact us on 6026 1876  
or visit our website [www.burrumbuttocklutheranparish.org](http://www.burrumbuttocklutheranparish.org)  
Pastor Christian Fandrich - 0457 841 123

**This Christmas**  
**SHOP in JINDERA**

**JINDERA COMMUNITY FORUM**

*Wishing you all a blessed  
Christmas  
and a  
happy New Year.*





# Greater Hume's Australia Day Celebrations

Sunday 26 January 2020  
at Culcairn Recreation Ground, Federal Street, Culcairn  
8 am for Breakfast, 9 am Official Ceremony commences.  
This is a FREE event.



**AUSTRALIA DAY**  
IN GREATER HUME

The Australia Day celebrations include the Australia Day Breakfast, Australia Day Ambassador's address, presentation of Citizen, Young Citizen, Sports Person/Team, Sports Volunteer and Community Event of the Year and presentation of School Citizenship Awards.

Australia Day  
Ambassador  
to be announced during  
December.

Plenty of shade will be provided. Please bring chair, rug, sunscreen, hat and insect repellent.

## Activities after Australia Day Ceremony

- Swimming Pool is open from 12 noon with pool inflatable.
- Bring your skate board to try out the new Culcairn Skate Park.
- Tennis courts will be open for a social hit of tennis.
- Why not try out the outdoor exercise equipment or take a walk/run along the walking track.
- Pull some moves on the BMX Track or just go for a ride along the bike track.

For more information please contact - Kerrie Wise, Tourism and Promotions Officer  
02 6036 0186 or 0448 099 536, [kwise@greaterhume.nsw.gov.au](mailto:kwise@greaterhume.nsw.gov.au)



Pic: Citizen of the Year, John Seidel  
(photo courtesy of Lorri Roden)

## 2019 Greater Hume Australia Day

Citizen of the Year  
John Seidel, Walla Walla

Young Citizen of the Year  
Nathaniel Wenke, Culcairn

Sports Volunteer of the Year  
Abby Paton, Morven

Community Event of the Year  
joint winners Henty Streetscape  
Party & Jindera 150th Celebrations



Pic: Young Citizen of the Year,  
Nathaniel Wenke  
(photo courtesy of Lorri Roden)



# SAINT MARY MACKILLOP COLLEGE ALBURY LIMITED



197 Urana St, Jindera NSW 2642  
PO Box 310 Jindera NSW 2642  
Phone: 02 60 459 422 Fax: 02 6026 3745  
Email: office@smmc.nsw.edu.au

Our students have been very busy this term participating in different sporting activities. The Primary students participated in four lessons of table tennis which was held on Wednesdays, with their last lesson being held on Wednesday 13<sup>th</sup> November. The students really enjoyed playing table tennis and it's been wonderful to see the students learning some new skills. As part of the funding we received for the program, our school now has some new table tennis tables and equipment which is sure to be put to good use.

The year 7 and 8 students have been participating in a tennis program which also finished up on Wednesday 13<sup>th</sup> November. The students have been receiving professional tennis coaching at the Jindera Tennis Club over the past three weeks. Our school also received new tennis equipment through the funded program.



Earlier this year a number of our students participated in the ICAS Testing. We would like to congratulate SMMC student, Maria Chandrasegaran, who received the highest score in NSW/ACT for the writing test in her year level. Maria has now been invited to attend a ceremony later this year to receive a medal for her achievement. Well done Maria!

The Kinder class has been very busy this term. In English they have been writing sentences, recounts and stories, learning new songs and rhymes and reading a variety of fiction and non-fiction texts. Some of these included a non-fiction book called "How Frogs Grow", and the fictional story, about frogs called, "Lester and Clyde". Students have learned a lot about frogs, including where they live and what they eat. They are also learning about the purposes of different texts and how we can read for enjoyment or to find information. The pictures show the Kinder's Little Donkey artworks, tree artworks, and some 'Lester and Clyde' writing pieces.





# Jindera Bush Fire Brigade

The ongoing and disturbing news of fire activity in more and more places in our country are pointing the way to a really bad season.

## Coreen fires - an early reminder

The Captain led a Jindera group to the recent fires in Coreen and Thargomindah and with Brocklesby fires on Saturday we have to recognise that they're getting close to home.

Sadly, there will be more and bigger ones to come and we're asking you to do your part by cleaning up around your property.

## Minimising risk

You can do a lot to protect your property:

- minimise the amount of leaf and bark litter and other combustibles around
- clean out your gutters.
- make sure that you have clear access to property for fire trucks if needed
- if you're storing hay, make sure that its well away from

your driveway - burning hay can prevent vehicles getting in and out

and

- report smoke sightings to 000.

Prevention is always better than cure and early warnings and actions can be crucial in containing fires and minimising damage. This is more vital this year than most as dam water supplies - the main tool in fighting fires here and in most places - are very low.

## Vale Barry Funk

This month we lost a stalwart of the Jindera Community and the Brigade: Barry Funk

A true local, Barry was born and raised in Jindera and over the years contributed greatly - not least to the Jindera Bush Fire Brigade.

Before the establishment of the headquarters in Urana Road, Barry housed one of the brigade's units and was a tireless fire fighter when the heat was on. He served for many years as Deputy Captain of the Brigade

and even after into semi-retirement, he and wife Gail became the main provisioners at fire grounds, making and providing copious rounds of sandwiches and cups of tea.

Barry - you are missed

## ... and farewell Claire

And another loss to the community and the Brigade. Adam Klein and his family and his dad have moved on to a new farming life in Queensland.

Adam virtually grew up with us. With father Bruce, he was a regular on a truck early on and a leader from a young age.

But our loss is another's gain and we fully expect that Adam is already on a fire ground well to our North. We wish Adam, Amy, Bruce and the family a happy and successful future.

*With wishes for a happy and wishing for a fire free Xmas*

Cheers  
Nafa



## \$3k financial assistance for drought-affected households in Farrer

Drought-hit farm households in 12 of Farrer's local government areas will be able to access one-off payments of up to \$3,000 thanks to the Government's Drought Community Support Initiative.

Local MP Sussan Ley said the payments would provide immediate relief to some of the worst-hit farming families in her electorate.

"Our government understands agricultural regions over most of NSW have been doing it tough because of the drought. Registrations are now open for affected farmers, farm workers, contractors and suppliers in the council areas listed below.

"Eligible applicants will be entitled to a one-off payment of \$3,000 through the Drought Community Support Initiative.

"This money can be used to cover day to day living costs such as groceries, vehicle maintenance, energy & utility bills, or health & medical expenses.

"This immediate assistance is on top of the Government's other drought assistance grants, including the Farm Household Allowance.

"Applicants need to be over 18 and live and work in one of the identified council areas,

The benefit is limited to one maximum cash payment of up to \$3000 per household - applications through one of the two organisations.

### \*St Vincent de Paul Society

[www.vinnies.org.au/drougthelp](http://www.vinnies.org.au/drougthelp)

Ph: 1300 846 643

### \*\*Salvation Army

[www.salvationarmy.org.au/drought](http://www.salvationarmy.org.au/drought)

Ph: 1300 551 030

**The Hon Sussan Ley MP**  
Federal Member for Farrer







**Open 7 Days  
from 8am till 4pm**

**Deliveries are also Available**

Jindera Garden Supplies  
1 Jarick Way  
Jindera Industrial Estate

**0448 600 433**



Five ex-St John's Jindera students graduated from the Class of 2019. We wish our Year 12's God's richest blessings for their future.

**ST PAUL'S COLLEGE, WALLA WALLA**  
*Vacancies in all year levels for 2020*

[www.stpaulscollege.nsw.edu.au](http://www.stpaulscollege.nsw.edu.au) : 60 292 200



**Buy local  
this Christmas**

An initiative of Greater Hume Council.

## Southern Basin Communities

*are coordinating*

### **Convoy to Canberra - Stop the Basin Plan**

**Monday 2nd December and  
Tuesday 3rd December**

**Join us to**  
**Fight for our environment**  
**Fight for our Communities**  
**Fight for our Future**  
**Fight for Water**

We need - Regional Coordinators, if you can help please contact John Lolicato 0428539226, Darcy Hare 0437459297 or Jan Beer 0407144777

Convoy will have its final assembly in Yass (Service Centre) **Monday 2nd 11am** before rolling into Canberra.

For those wishing to stay over bring a swag – or book accommodation early!

## JINDERA MUSEUM

**FAMILY DAY**



**JANUARY 19  
10-4**

**FREE ENTRY FOR JINDERA  
RESIDENTS  
BRING A PICNIC AND ENJOY  
THE BEAUTIFUL GROUNDS**

**NO ALCOHOL  
BBQ AND DRINKS AVAILABLE  
FOR PURCHASE**





## St John's Lutheran Primary School

154 Adams Street, Jindera 2642

Phone: (02) 6026 3220 Fax: (02) 6026 3289

Email: [admin@stjls.nsw.edu.au](mailto:admin@stjls.nsw.edu.au)

Web: [www.stjls.nsw.edu.au](http://www.stjls.nsw.edu.au)

Principal: Brad Moss



### EXPLORING SCIENCE

The 1/2 class has been exploring features in the night sky and weather patterns.

They also made and named their own constellations, and enjoyed listening to an astronaut speak from a space station!



It was great to have **Anthony Miles** visit the Year 5/6s who shared about his story with the Year 6 boys.

The Year 5/6s participated in their first AFL clinic.



They were taught many different skills and participated in fun activities. They are looking forward to more sessions in the coming weeks.

**On Grandparents' Day**, we were blessed with beautiful weather and wonderful visitors to the school.

The Grandparents and special friends enjoyed Chapel led by our amazing Kinders, classroom tours, followed by a picnic lunch under the trees. It was a fantastic day.





# The Children Visit The Fire House and Learn About Fire Safety



Greater Hume  
Children  
Services

The severe weather and fires across NSW have made our recent training much more relevant. Each year our service works with CFA Victoria staff to provide training to our educators and children.

The children enjoyed some outside play at the Fire House whilst the educators learned how to be prepared in the event of an emergency and the best ways to keep everyone safe.



The children had many questions about the tower where the hoses are dried and why there was a little garage door alongside the big doors. After the training the children were able to have their questions answered and climb on a real fire truck.

Upon returning to their day care homes the children and educators practice their emergency plans.

Thank you so much to Maureen and all of the wonderful firefighters who work hard to ensure the safety of our communities.



Our service has a few vacancies available for 2020, if you would like your child to have these wonderful experiences please call or email. [mail@ghchildren.com.au](mailto:mail@ghchildren.com.au) or call Greater Hume Children Services on: 60263877.



# Calling for Nominations of Greater Hume's Top Citizens for 2020 Australia Day



Greater  
Hume  
Council

Greater Hume has many unsung heroes who generously dedicate their time and energy to our communities, now is the time to say thank you by submitting a nomination for an Australia Day Award.

Mayor, Cr Heather Wilton said, "This is a wonderful way for communities to show their appreciation of the tireless work of our many volunteers right across Greater Hume."

2019 Citizen of the Year, John Seidel said, "I certainly felt very privileged to receive the award and appreciate that the Greater Hume Council has seen fit to highlight the valuable work of volunteers in the local community."

Awards will be announced at the official Australia Day celebration to be held on Saturday 26 January 2019 at Jubilee Park, Olympic Highway, Culcairn.

Residents are encouraged to nominate local people/events for each of the following categories:

- **Citizen of the Year**
- **Young Citizen of the Year**
- **Community Event of the Year**
- **Sports Person/Team of the Year**
- **Sports Volunteer of the Year**

Nomination forms for all award categories are available from Council's Customer Service Centres at Culcairn, Henty, Holbrook, Jindera and Walla Walla or at: [www.greaterhume.nsw.gov.au](http://www.greaterhume.nsw.gov.au).

**Nominations close on or before 5pm Wednesday 5 December 2018**

and should be forwarded to the General Manager, Greater Hume Council, either [mail@greaterhume.nsw.gov.au](mailto:mail@greaterhume.nsw.gov.au) or P O Box 99, HOLBROOK NSW 2644.

Further information can be obtained by contacting Kerrie Wise, Tourism and Promotions Officer, Greater Hume Council on 02 6036 0186 or [kwise@greaterhume.nsw.gov.au](mailto:kwise@greaterhume.nsw.gov.au).



**STARTS - Wednesday 4<sup>th</sup> September, 7.00 pm**

**At Jindera Tennis Club**

**Come and play under the NEW LIGHTING on the NEW COURTS**

**No teams required, just turn up with a racquet.**

**All skill levels welcome. BYO Refreshments. See you there.**

# JINDERA

· PIONEER MUSEUM ·

The Murray Valley Sanctuary Fund raiser was a great day of beautifully dressed singers and dancers and music from distant shores. The weather was unpredictable but fortunately, we were only rained on once and this did not dampen the spirit of the day. It was a little disappointing that more did not venture out to participate in this fabulous day of food, fun, music and activities. White Line provided music in between the African collection.

Many of the folk attending were only relatively new to Australia and they seemed to benefit from the hospitality and camaraderie of the event.

The Consequence Exhibition has opened at the Museum and will remain with us until late January 2020. This exhibition is a joint initiative of Albury City and Greater Hume Shire museum's looking at the effects of WW1 on the communities of Albury and surrounds. Jacqui Schulz has created a 10-minute video for the museum featuring diary excerpts and local identities. This is well worth a visit to the museum just to see.

Museum members had the opportunity to see what is available in the technology range for museums when Kevin Wright from Deep Creek Digital provided a workshop in early November. Several museums from the district were able to attend and it was very interesting to see what can be utilised in the digital field to enhance a visitor's museum experience.

The museum will hold a Family Day in January, free to local residents – old fashioned games and music from White Line will feature on the day and food and drinks will be available for sale but bring a picnic if you would like. No alcohol please. See flyer in this edition.


We are looking for old photographs of Jindera town, events, families and photographs taken by Fred Krause, Jindera's own resident photographer for nearly 80 years – please look through your old photograph collections and see if any might be utilised by the museum. We will only scan these and return them to you. It is vital that this type of history is preserved. See flyer in this edition.

Don't forget the Christmas Wreath Making workshop to be held at the museum on Sunday 15<sup>th</sup> December, two sessions available – see flyer in this edition for booking details.

The museum is a community facility, owned and operated by volunteers. Many exciting things are planned for future development of the museum in 2020 and your support of the museum is vital for its on-going success.

We would like to wish our Jindera community a safe and fun filled festive season. If you have family or friends visiting over the holiday period, bring them to the museum and take them on the Heritage Walk; Jindera has a fascinating historic past.

Thank-you for the support many have offered the museum in the past year and we look forward to seeing many of you at the Family Day on Sunday 19<sup>th</sup> January or at any of our other activities and events in 2020.



## JINDERA PIONEER MUSEUM

Celebrating 150 years with 7 historic buildings, over 20 rooms and galleries & 2 sprawling acres of grounds.

**Welcome!**

**Open 7 Days - 10am - 4pm**

**Closed**  
**Christmas Day & Good Friday**

Ph: 6026 3622  
info@jinderamuseum.com.au  
www.jinderamuseum.com.au  
jinderapioneermuseum

When did you last visit the Museum?



# JINDERERA

· PIONEER MUSEUM ·



## Christmas Wreath-making workshops for Adults AND Children \*

When: Sunday 15th December

Workshop Times: 1.30pm and 3.00pm

Cost: \$15 per participant

Come along to the museum and participate in making wreaths to decorate your home this Christmas.

BYO vegetation (preferably long-lasting, ie native), gum nuts, pinecones, holly, ribbons, and bits and bobs, or simply use our supply.

With 'retired' Art Teacher Alison Viedt and her merry accomplices

Bookings essential: <https://www.trybooking.com/BFUFJ>

Or call 0408 409 842

Refreshments served

Workshop size strictly limited to 12.

\*Children ages 8 to 16

Our Community  
Your MP

**Justin Clancy MP**  
MEMBER FOR ALBURY

02 6021 3042 | [albury@parliament.nsw.gov.au](mailto:albury@parliament.nsw.gov.au)  
[www.justinclancy.com.au](http://www.justinclancy.com.au)

# JINDERERA

· PIONEER MUSEUM ·

# WANTED

## Old photographs of Jindera

Events, streetscapes, buildings, families—anything related to the towns historic past.

We will scan and return to you.

## Photographs taken by Fred Krause

Fred was a prolific photographer from a very early age. He took many family and individual photographs as well as any event or activity that was going on in the township. He also produced many artistic pieces including landscapes. If you have any of these in your family collections we need to copy these so they are not lost.

We will scan and return these to you.

Contact Margie 0408 409 842



# Jindera Red Cross

*Wishing everyone a Blessed and Happy Christmas and a Healthy and Prosperous New Year.*

The monthly Red Cross meeting was held on Tuesday 5<sup>th</sup> November at 10am.

The takings for our Blumes Fashion Display was \$496.00. Blumes once again provided lovely clothes on sale. The Raffle drawn on the day was won by Mary Fielder.

Valmai Ryan our Zone 20 Representative conducted a survey in regards to "How Red Cross should change in the Future". Valmai asked the members at the meeting several questions, and they gave their opinions on the matter.

On 3<sup>rd</sup> December we will be celebrating 80 years of Red Cross with a luncheon and our meeting.

## News from Red Cross NSW



### Red Cross response - Bush Fire Relief

More than 160 Red Cross emergency personnel – mostly volunteers – have been on the ground in 35 relief and evacuation centres across New South Wales, Queensland and South Australia.

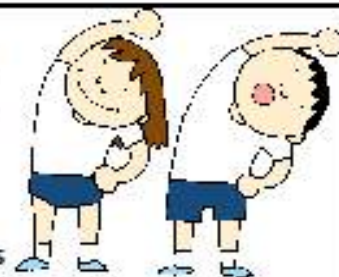
These volunteers are welcoming and supporting people at evacuation centres and recovery hubs, providing emotional support by way of psychological first aid and offering information and practical referral.



## GETTING ACTIVE IN JINDERA



Jindera residents who would like to be more active are invited to attend a new gentle exercise classes on Fridays at 10am at the Community Hub 83 Urana St Jindera. The classes will be run by volunteer Ruth Dunn. Ruth has been trained by Murrumbidgee Local Health District to lead the gentle exercise class.



Murrumbidgee Local Health District is supporting volunteers to provide low cost exercise opportunities.

"Gentle Exercise is a great way to improve your balance and flexibility in a friendly social setting. Everyone is welcome to come and join in" said Ruth.

Murrumbidgee Local Health District Health Promotion Officer, Adelle Kennedy said, "We know the importance of regular physical activity to maintain good health and the class is ideal for people who have always thought about getting involved in gentle exercise, and the classes are run in a very friendly environment.

Participants are asked to bring a gold coin donation per class to assist with program running costs.

For more information about the Gentle Exercise class in Jindera please contact Ruth Dunn on 6026 3806.

For any other information about any physical activity classes provided by Murrumbidgee Local Health District please contact Adelle Kennedy Health Promotion Officer on 0409 781 326 or visit [www.activeandhealthy.nsw.gov.au](http://www.activeandhealthy.nsw.gov.au).







# INDEPENDENT TAXATION SPECIALIST

## RAYTHER & CO

CHARTERED ACCOUNTANTS  
REGISTERED TAXATION AGENTS

# 6056 3520

Phone today to arrange your appointment.  
Late appointments and Saturday's  
by request.

SPECIALISING IN:

- Individuals
- Rental Properties
- Primary Producers
- Small to Medium Businesses

9/175 Lawrence St, Wodonga.  
(opp. new TAFE SPACE Building in Lawrence Street  
raytherwodonga@westnet.com.au

## TerryWhite Chemmart.

### Jindera TerryWhite Chemmart Pharmacy

Shop 4&5, 82 Urana Street, Jindera, NSW 2642

OPEN

Monday-Friday: 9.00am to 5.30pm  
Saturday: 9.00am to 12 noon

### -- OFFERING --

- ◆ Health Risk Screening Services
- ◆ National Diabetes Services Scheme
- ◆ Webstar packing
- ◆ Spotcheck (Skin Cancer Screening Programme)
- ◆ Wide range of vitamins
- ◆ MedsCheck
- ◆ Free Blood Pressure Testing
- ◆ Baby Products
- ◆ Home Health Care Aids
- ◆ Giftware
- ◆ Natio Ski Care range
- ◆ Chemmarts Reward Programme

Phone (02) 6026 3271

Fax: (02) 6026 3935

Email: Jindera@chemmartpharmacy.com.au

## TerryWhite Chemmart.



# NA Auto

AUTOMOTIVE ELECTRICAL  
SPARE PARTS & ACCESSORIES

Neil and Kathy Anderson

94-96 Urana Street, PO Box 27, Jindera, NSW 2642

Ph: (02) 6026 3391. Fax: (02) 6026 3722. Mob: 0428 578 061

Email: sales@naauto.biz Website: www.naato.biz

# JINDERA HAIR HEALTH & BEAUTY

TEL.: 02 6026 3434

91 URANA STREET, JINDERA



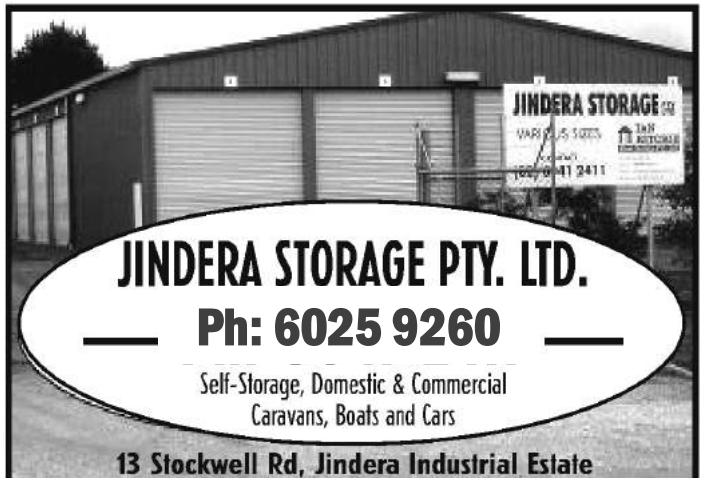
# BOBCAT WHILEY

- Bobcat with Trax
- Trencher
- Hay Spikes
- Post Hole Digger
- Excavator
- Tip-Truck
- Slasher

PHONE GEOFF: 0408 698 028

Dights Forest Road, Jindera, NSW 2642

# (02) 6026 3990



## JINDERA STORAGE PTY. LTD.

Ph: 6025 9260

Self-Storage, Domestic & Commercial  
Caravans, Boats and Cars

13 Stockwell Rd, Jindera Industrial Estate

# You will save stacks of money when you shop locally in Jindera.



# Jindera Pool Report

The Jindera pool has now been open for 2 weeks.

The weather was so cold on the opening weekend, we were worried that we would be skating on the pool instead, however some die-hard regulars turned up to brave the elements (see photo).

A huge thank you to Leanne and Bec who will be running the kiosk this year. We appreciate them putting their hands up to ensure that we continue to have cool drinks and hot food available to purchase.



**Wally Wipeout dates for Jindera**  
 29<sup>th</sup> December,  
 2<sup>nd</sup> February &  
 8<sup>th</sup> March.  
 Put these dates in your diary.

Aqua classes with Alana have commenced and run every Tuesday and Thursday from 6:00 – 7:00pm.

## Jindera (phone 6026 3900)

Start Date	End Date	Monday to Thursday	Friday to Saturday	Sunday	
Sat 09/11/2019	Sun 15/12/2019	2:00 - 7:00	2:00 - 8:00	2:00 - 7:00	Closed Mondays
Mon 16/12/2019	Sun 26/1/2020	1:00 - 7:00	2:00 - 8:00	2:00 - 7:00	Open 7 days
Mon 27/1/2020	Sun 15/3/2020	2:00 - 7:00	2:00 - 8:00	2:00 - 7:00	Closed Mondays

Morning swims at Jindera are held from 6:00 am to 7:00 am Tuesday to Friday (Dec to Feb).

Can we draw your attention to the morning swims which will be starting in December: the pool is open from 6am until 7am Tuesday to Friday (for lap swimming, walking etc).

With all these opportunities to stay fit and healthy – whilst keeping cool – there’s no excuse! Other towns hold the award for the tidiest town – we reckon we should get the prize for the fittest town.

### Entry fees:

Adult \$3.50  
 Children, Students & Pensioners \$2.50  
 Spectators & School Events \$1.50

### Seasons Tickets costs:

Family \$160.00  
 Single Adult \$90.00  
 Pension Family \$110.00  
 Pension Single OR Child \$50.00  
**Season tickets can be purchased from any Council office and seasons tickets are valid across all shire pools.**

Come on down to our pool and see the amazing changes that we have been able to make thanks to the \$100,000 made available through the NSW Stronger Communities fund. Next meeting will be on Monday the 2<sup>nd</sup> of December, 7:00pm at the pool meeting room. All welcome.

The Jindera Pool Committee



Council resolved to submit a submission that objects to the exhibition of the Environmental Impact Statement for the Walla Walla Solar Farm and the draft submission be amended in accordance with this resolution.

Council resolved to approve a development application for a shed in Beatrice Road, Burrumbuttock subject to 25 conditions of approval.

Council endorsed the Annual Report, which is available to be viewed at [greaterhume.nsw.gov.au](http://greaterhume.nsw.gov.au) and agreed that the Office of Local Government be notified of the URL link to the report on the website.

Council agreed to offer the Holbrook Men's Shed Inc. a loan of \$22,000 funded from Loans to Community Groups funding pool, with interest of 3% pa and a term of 10 years.

Council received a report on the quarterly budget review to 30 September 2019. The review indicates a cash surplus of \$75,789, an improved position based on the original estimate of \$1,411. The report noted that revenue from investment interest is being severely impacted by record low interest rates, with a review of investment income to be reported in the December quarterly budget review. Council also expects savings to flow into the budget in the next quarter from workers compensation premium adjustments.

Due to the rollout of the Crown Land Management Act 2016, Council is required to introduce a short term licence fee of \$250 (incl of GST) for crown land grazing leases. In accordance with the Local Government Act 1993, Council resolved to provide public notice of the proposed new fee for a period of 28 days.

A total of \$29,534 has been awarded to nine community groups as part of Greater Hume Council's 2019-2020 Community Development Grant Program. The final allocations were signed off at the November Council meeting for projects aimed at enhancing the range, availability and quality of community facilities and community programs that

benefit a diverse range of residents.

Council will lodge two projects under the NSW Government's Fixing Local Roads grant round – 1. Reconstruction of the remaining 6 km of Cummings Road, and 2. Reconstruction of 4 km of Fellows Hills Road. The proposed grant requires Council contribution of 25% of the cost of these projects.

Excell Gray Bruni was appointed successful tenderer for drainage and concrete works on Kywong – Howlong Road, north of Brocklesby.

Council accepted financial assistance of \$140,000 through OEH Floodplain Management Program to proceed with the Jindera and Walla Walla Flood Mitigation Works – Investigation and Design Phase. To undertake the project Council will contribute \$35,000.

Council was also notified of the Australian Government's latest drought funding announcement which will result in funding of \$1 Million, to combat the prolonged dry spell and drought's impact in our area. Council awaits grant guidelines but has been advised that the funding is to be invested in projects that support jobs and business income.

Council also resolved to consider two matters of urgency at the meeting. Council resolved to authorise senior management to undertake further negotiations with NEOEN in respect to a Voluntary Planning Agreement (VPA) for the proposed Culcairn Solar Farm and the Walla Walla Solar Farm. Council also agreed that the results of negotiations be reported as an open agenda item at a future meeting and appropriate bodies be advised of the negotiations.

The next Council meeting will be held on 18 December at Holbrook.

Meeting agendas and minutes are available for viewing at any time on Council's website or in person at any Greater Hume Customer Service Office.

**Cr Heather Wilton** Mayor  
[greaterhume.nsw.gov.au](http://greaterhume.nsw.gov.au)

# The Jindera Pioneer Museum Volunteers celebrate Christmas.



On Sunday evening 24 November the Jindera Pioneer Museum celebrated the volunteers with a Christmas dinner.

About 35 volunteers attended and were treated to a roast Turkey Breast and Roast lamb dinner accompanied by roast potatoes and sumptuous salads , followed by decadent sweets and appropriate beverages.



**Jindera**  
**Community Calendar**  
*Do you have an event that you would like entered in the Jindera Community Calendar.*  
If so please contact  
Jenny O'Neill  
Email: [bungord@bigpond.net.au](mailto:bungord@bigpond.net.au)



**Briese Janissen**  
& Associates

Chartered Accountants



**NEED AN ACCOUNTANT?**

— CONTACT US TO MAKE AN APPOINTMENT —

**Ph: (02) 6022 0700**

We are a firm of Chartered Accountants who provide quality  
**Taxation, Accounting and Business Management Services.**

Both **Mark** and **Terri** have many year's experience in public accounting and taxation affairs for a broad range of clients in business, including Self-Managed Super Funds.

**Office:** 621 Macauley Street, (Cnr: Guinea and Macauley Sts) Albury, NSW 2640.

**Postal Address:** P.O. Box 721, Albury, NSW 2640.

**Email:** [terri@bjan.com.au](mailto:terri@bjan.com.au) or [mark@bjan.com.au](mailto:mark@bjan.com.au) Visit our Website for further information at [www.bjan.com.au](http://www.bjan.com.au)

## **BLD Machining**

### **CNC MACHINING FABRICATION & WELDING**

**Precision:**

Milling, Boring & Screwcutting,  
Repairs, Maintenance & Modifications  
to all plant & equipment

**Guaranteed fast and professional service.**

Phone Bruce:

**0448 790 666**

6 BEGG DRIVE, JINDERA

**Fixing the old and broken, designing  
and manufacturing the new!**

## *Civil Celebrant*

— *Judy Gray* —

• *Weddings* • *Baby Namings* • *Funerals*

*Conducted in Style*

TELEPHONE: **6026 3329**

MOBILE: **0418 617 385**

JINDERA COUNTRY GOLF CLUB

*Your town...Your golf Course*

### **WANTED GOLFERS**

*Yes, Jindera golf Club needs Players*

Only \$10 for 9 holes or stay and play 18 for  
Still only \$10

Yearly memberships only \$80

Comps every Wednesday Vets 9 HOLES 7.30-8.00am

Saturday 9 holes from 8.30 and Sundays 18 holes from 8.am

Phone David 0427808395 or Daryl 0409537452

For more info go to:

Facebook: [jindera country golf club](https://www.facebook.com/jindera.country.golf.club)  
[www.jinderagolfclub.com](http://www.jinderagolfclub.com)



**FINE  
FEATHERED  
FRIENDS**



*W & B Coulthard*

Chickens (day old), Pure-bred Barnevelder, Sussex, Orpington  
and various Peking Bantams.

Also settings of fertile eggs.

Chinese Geese – breeding pairs and goslings

— Orders taken —

SPECIALISING IN RARE BREEDS/PUREBRED POULTRY

“Waybet Rise”, Jindera, NSW 2642. Ph: (02) 6026 3225

## **COOEE BOOKKEEPING**

Contract bookkeeping for small to medium businesses  
MYOB, Reckon, Xero

**Judith Hudson**

**0431 027 268**

[judith.hudson9@gmail.com](mailto:judith.hudson9@gmail.com)



## AWARD WINNING PIES RIGHT HERE IN JINDERA!

We also bake pasties, sausage rolls, breads, rolls, cakes and scrolls.  
We make milk shakes, sandwiches, wraps and great coffee.



### Harley & Rachel Lloyd

Shop 2/3 82-88 Urana St,  
Jindera, NSW 2642

Tel: (02) 6026 3821

Fax: (02) 6026 3827



Open from 7.30am-6.00pm, Mon-Fri and 7.00am-3.00pm Sat.

## Jindera Veterinary Clinic



**Daryl Klein**

B.V.Sc (Hons)

*Veterinary Surgeon*

Ph/ Fax: (02) 6026 3277

Mob: 0427 046 236

email: [jvcvet@tpg.com.au](mailto:jvcvet@tpg.com.au)

Hours: Mon-Fri 8.30am-6.00pm

Sat 8.30am-11.00am

# JINDERA PIZZA

## TRADING HOURS

WED 5.00 - 8.00PM

THUR 5.00 - 8.30PM

FRI 5.00 - 9.00PM

SAT 5.00 - 9.00PM

SUN 5.00 - 8.00PM

**Orders will be taken up to 15mins  
before closing time**

# (02) 60 26 30 55

## FUGE EARTHWORKS PTY LTD

- SCRAPERS • DOZER • LOADER • EXCAVATOR
- GRADER • TIP-TRUCK • TRAXCAVATOR
- ROLLER & BACKHOE FOR HIRE



- Dam Construction, Enlargement and Repairs
- Site Excavations, Drainage, Driveways
- Bulk and All General Earthworks

MICK FUGE: 0428 480 341

Ph/Fax: (02) 6026 3571. Email: [fuge.1@bigpond.com](mailto:fuge.1@bigpond.com)  
375 Molkentin Road, Jindera, NW 2642.

## Stitch and Chat Craft Group

This group meets on the first Wednesday afternoon of each month at 1.30pm at the Jindera Anglers Clubhouse.

All welcome, just bring whatever you are working on and come along for a chat and cuppa.

We usually finish at around 3.00pm.

**Judy Gray on 0418 617 385 for further information.**







Jindera Village Post Office

Bringing Banking to your community

Bank with over 70 banks and financial institutions

Also a great range of unique gifts.

Ph 60263201



Quality Meat & Personal Service  
- Bulk Meat Specials -

Brad & Tina Taylor  
Shop 7, 87 Urana Rd,  
Jindera, NSW 2642 (02) 6026 1886



## Antennas

- Digital Antenna Installation/Service
- Specialising in difficult reception areas
- Satellite and VAST installations
- Five-year warranty on all work

— — DIGITAL ANTENNAS — —

FULLY INSTALLED FROM **\$280**

### FREE QUOTES

Servicing Jindera and surrounding areas

Call Phil Packer

**0422 374 930**

email: [ppacker@pdinstallations.com.au](mailto:ppacker@pdinstallations.com.au)

[www.pdiantennas.com.au](http://www.pdiantennas.com.au)



## Lester & Son

Funeral Directors

*A tradition of personal, professional care since 1907*



*Cherie, Tony, John*

**359 Wantigong St**

**Albury**

**02 6040 5066**

[www.lesterandson.com.au](http://www.lesterandson.com.au)

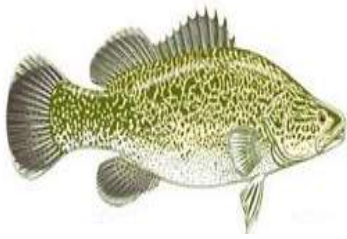
*All Hours • All Areas • Pre-planned Funerals Available*



**"FOR ALL YOUR PRINTING REQUIREMENTS"**

- Business Cards • Letterheads • Books • Raffle Tickets
- Complete in-house design service • All business stationery
- Invoice Books • Stickers • Brochures • Leaflets

**(02) 6026 3611**



# JINDERA ANGLER'S CLUB Inc.

Been a big month and a bit for the Jindera Anglers starting on October, 27<sup>th</sup> with the Bunnings

sausage sizzle, this was a very successful day and thanks to all the helpers on the day, Wayne, Phil, Shamrock, Nicki, BJ, also Wade, Rhonda and Trev for their morale support.



Wayne, Phil and Sham cooking up a storm at Bunnings

The club also had a mid-month fishing comp on the weekend of 15,16 and 17<sup>th</sup> of November where we had a good roll up for the weigh-in and lots of fishers out and about.

Shane Bradbury won biggest fish with a good yellowbelly 575mm released, narrowly beating Jason Boydy Boyd 550 yella released, Lazslo Peli 530mm yella, Zol Peli 400 yella, Wayne Polley 430 yella for biggest fish of the comp.

The girls cleaned up with some nice redfin with Kirsty Taylor having the largest ladies fish with a nice 330mm redfin and a bag of reddies of 870mm. Naomi Lieschke won the biggest bag overall with a bag of 8 redfin and a total length of 2055.

Luke Geiswein had 2 good bullet like Dartmouth trout, the biggest being 465 and a total length of 855, Zol's bag was 895, Lazslo Pavroti 1465.

The big winners on the day were the recipients of the infamous doughnut award for fishing excellence without troubling the scorers, well done Squeaky, Grub and Ricko and Cadan.

The Jindera ladies card making group had a successful day at our clubrooms on Friday, 22<sup>nd</sup> of November.

The new members information/orientation night was held at the clubhouse on Friday, 22<sup>nd</sup> November at 5.30 and it was a great time to explain and

demonstrate what our club is about, how we operate, how to clean fish, back a boat and remove hooks from parts of the body. Snacks, soft drinks were supplied and enjoyed by all.

## Huge Problem ...

the anglers favorite Upper Murray fishing camping destination, the tennis courts, Talmalmo, is being gazette for road closure by the Crown lands Dept, we must object prior to 13<sup>th</sup> December, 2019 or the only decent boat launching and camping area will be gone forever, you need to object to Megan McCullough by phone 02 66403928 or preferably by email to:

megan.mccullough@crownslands.nsw.gov.au

*Next big fishing comp will be on December 7, 8, and 9<sup>th</sup>, fishing commences at 5pm on Friday with the weigh-in prior to our Christmas Party at 2pm at our clubhouse, fishers are expected to fish together at the Talmalmo reserve on the Murray River.*

## Christmas Party

**Sunday, 8<sup>th</sup> December, at the clubhouse, 2pm, sumptuous complimentary 2 course meal and soft drinks, lollies and ice blocks for the children, raffles, yarns and good times.**



New and intending members as well as our past members are most welcome to join in.

Phone Ricko 0409537452 for further info.

We will also be assisting the **Jindera Carols** by catering with snags in bread, soft drinks and water from 6pm at the town square on Friday, 13<sup>th</sup> December.

The first fishing comp in **2020** will be an open comp held on Friday, 17<sup>th</sup> January, from 5pm to the weigh-in at the clubhouse on Sunday 19<sup>th</sup> February at 5pm.

Wishing everyone a Happy Christmas and a very fishy New Year.

**Happy reading** .... we will be restocking \$2,000 or 3000 Murray cod fingerlings into the Murray River at the 12 mile reserve in December at a time to be advised.

**Jindera Anglers be Proud of this great achievement.**



# NOW OPEN

## 24HOUR GYM

# FIT

(FIRE AND ICE TRAINING)



Foundation memberships available soon  
All enquiries to Fiona Brown 0438 262 644



*Zol Peli caught a good callop and a tidler reddie*



*Naomi Lieschke with her bag of quality redfin*



Crikey its dry, unfortunately with the particularly dry run of weather and dwindling water left in our dam it has been hard to keep the course looking green, the grounds committee have done well with watering around the greens and most of the tees.

The golf course is playing fast and making us all look like big hitters, however the real skill is approaching and around the greens, the greens are great for putting just a bit tricky getting the ball onto the greens.

The carpet greens are very refreshing and cooling in contrast with the dryness on the course.

The club has also taken advantage of the dry conditions to get an arborist in to remove dead timber and remove overhanging and dangerous limbs. To those that didn't know it would be hard to see where they have been, it is good to know the course is much safer now and in particular on the 11<sup>th</sup> hole the fairway is wider and fairer to all golfers.

On the Sunday, 30<sup>th</sup> November, there is a free Community Golf Day planned just for you...

## **BANGERS & BIRDIES COMMUNITY GOLF DAY**

**Free sausage sizzle**

from 11am to 2pm, drinks available

**9 OR 18 HOLES OF GOLF, FREE**

**Saturday 30<sup>th</sup> November from 8.30am**

*Bring the family along, walk a couple of holes, have a swing and a chat and a Snag.*

Some golf clubs and tuition available for beginners

The arborists have been and Don is seen cleaning up some of the debris.

For sale, 1 very large redgum log, suitable for slabbing, great grain.....Don is not included in sale



## **Results Sunday Comp**

winner 10/11 stableford J. Grant 41, r/up K. Garfield 39, balls D. Gray 34. NTP 16<sup>TH</sup> S. Millar 17/11 Winner S. Millar 38, r/up B. Polkinghorne 37 c/b, balls Rawina Smithenbecker 37, B. Sheerans 37, G. Schilg 36, NTP G. Schilg 12<sup>th</sup>, S. Millar 7<sup>th</sup>, Doc Klein 3<sup>rd</sup>

## **Friday Night 9 hole Chook Run**

25/11 winner L. Cameron 23, r/up D. Singleton 20, balls B. Sheerans 16, K. Garfield 17, Doc Klein 16, G. Schilg 16 NTP G. Schilg 9<sup>th</sup>, M. Dickson 7<sup>th</sup>

1/11 19 players winner Bob Sheerans 20 c/b, r/up G. Schilg 20, balls D. Gray 19, G. Preston 18, L. Cameron 17, D. Singleton 17, S. Millar 17, J. Britton 17 NTP M. Dickson 18<sup>th</sup>

8/11 20 players winner J. Grant 18, r/up, Doc Klein 17, balls S. Millar 16, D. Gray 15, G. Schilg 14 NTP 7<sup>TH</sup> M. Dickson 3<sup>rd</sup> A. Melbourne

15/11 winner G. Schilg 19, r/up Doc Klein 18, balls T. Freeman 18, D. Briggs 16, B. Polkinghorn 17, D. Gray 16, S. Cossor 16 NTP T. Freeman 16<sup>th</sup> 9<sup>TH</sup> S. Cossor

The chook run will be held every Friday during December with tee off 4.30 to 5 and don't forget the chooks will become turkeys on the 13<sup>th</sup> and 20<sup>th</sup> of December

VETS GOLF – 9 holes every Wednesday, 8.30 for 9am tee off

November results, there has been really good turn-outs with an average of 20 players.

6/11 Stableford winner P. Chaston 21 (sinbin) r/up D. Briggs, balls F. Shannon 19, J. Todd 18, B. Sheerans 18, G. Wittenveen 18

13/11 4 Ball Ambrose winners – D. Briggs, B. Sheerans, M. Pearsall & Bill McEvoy 29.75

r/up D. Gray, Bob Smith, D. Singleton and D. Rixon 30.00

20/11 stableford winner D. Singleton 21, r/up J. Todd 19, B. McEvoy 18 c/b, N. Winter 18, F. Carmody 18

***Sunday golf is on till Christmas, tee off time 8am***

**The golf course is Open for Social golf every day,  
\$10 per round**





**Bob Smith focuses on his putt**



**Which Jindera golfer missed his par putt on the 4th hole.**

**Ian Dunn admires a great drive on the 2nd hole during the vets comp**



**Vets are now computerised with the score cards**

**Vets brains trust studying the score cards**



# Jindera



## Trading Hours

Mon – Fri 7:30am-7:00pm

Sat & Sun 8:00am-7:00pm

Find us on  to see our great specials, new lines recipes and loads more!

## JINDERA COMMUNITY DIRECTORY

Anglers Club .....	6026 3426	Morgan Country Car Club.....	<b>0448 004 706</b>
Friends in Action .....	6026 2442	Multi Purpose Stadium Committee.....	0411 282 320
Childrens Services .....	6026 3877	Netball Club.....	0407 186 073
Community Forum .....	6026 3544	Pony Club .....	6026 3484
Conway Printing.....	6026 3611	Pre School.....	6026 3468
CWA.....	6026 3318	Recreation Reserve.....	6026 3417
Football Club.....	0409 263 658	Red Cross .....	
Friends of Jindera Wet Lands .....	0407 180 730	Rural Care Link .....	6026 3001
Golf Club .....	6026 3426	St Johns Lutheran School .....	6026 3220
Jindera Lutheran Church .....	6026 3417	St Mary MacKillop College .....	6045 9422
Jindera Pioneer Museum.....	6026 3622	St Paul's Anglican Church .....	6040 6457
Jindera Public School.....	6026 3280	Swimming Pool .....	6026 3900
Jindera Post office.....	6026 3201	Tennis Club.....	6026 3122



in Greater Hume Shire

## BUY LOCAL

**BUYING LOCAL MEANS LOCAL JOBS.**  
and keeps our town alive.

**BE LOCAL— THINK LOCAL—BUY LOCAL.**