

THE JINDERA NEWS

FREE local Newsletter distributed by the first Saturday of each month (except January) published by:-



A Jindera based, not-for-profit charity organisation.

AN OPPORTUNITY TO HAVE A SAY ON OUR FUTURE

Greater Hume Council are reviewing its Community Strategic Plan 2030: *'Live a Greater Life'*. The Community Strategic Plan is the highest level of strategic planning undertaken by council. It has a ten-year plus timeframe. Other plans put forward must align with, and support achievement of, the Community Strategic Plan objectives.

live a greater life

You may think that most communities share a common set of aspirations such as: a safe, healthy and vibrant place to live; a sustainable environment; a caring and engaged community; opportunities for employment; and reliable infrastructure. However, there are differences in how each community wants to realize these aspirations.

A range of specific ideas to improve access to services, equipment, and infrastructure that supports community health and wellbeing have already been suggested for the new plan. These include bike path networks, a multi-purpose stadium, outdoor gyms, medical services, and healthy eating programs. Do they align to your wants and needs?

There have also been calls for greater community involvement in decision making and improved communication from Council.

While a council has a custodial role in initiating, preparing and maintaining the Community Strategic Plan on behalf of the local government area, it's the residents who supply the ideas. This is your opportunity to have a say on our future.

Have Your Say - Greater Hume
Community Strategic Plan



<https://www.greaterhume.nsw.gov.au/Your-Greater-Hume-Council/Have-Your-Say-On-Exhibition/Community-Strategic-Plan-Consultation>

**In addition to the survey, GHC senior staff
will be conducting pop up stalls
on Thursday 9 December
in the 5 major towns of the shire.**

The plan when completed will be endorsed by the new Council. But it won't be the sole responsibility for the Council to achieve the objectives you identify. The Community Strategic Plan will be delivered as a part of a wider partnership between the council, state agencies, business and industry groups, community groups and individuals.

**So get on the website or turn up to one of the
pop up stalls and have your say on our future.**

Council has commenced consultation with the community. It is inviting all community members to **'Have Your Say'** and to share their **'Big Idea'** to inform the next iteration of the plan. The survey and Big Idea page are available via the GHC website:

FANCY A COFFEE AND A CHAT?

CHAT WITH COUNCIL STAFF ABOUT
OUR **COMMUNITY STRATEGIC PLAN**
AND YOUR BIG IDEA!
WALK AWAY WITH A **FREE COFFEE/TEA!**
THURSDAY 9 DECEMBER 2021

10AM - 1PM
FOODWORKS - CULCAIRN
IGA - HENTY
IGA - JINDERA
GH CHILDREN'S SERVICES - WALLA WALLA

2PM - 5PM
IGA - HOLBROOK



#greaterhume
#visitgreaterhume



We provide a safety net of kindness, consideration and support through:-

Jindera Opportunity Shop | Jindera Newsletter | Referral and Emergency Contact Office

Carers Support Group | Schools Grants Programmes | Critical Family Aid

We also provide support and resources for various local events and organisations:-

The Jindera Garage Sale | Seniors Week | Anzac Day Services | Jindera Pioneer Museum

Rural Care Link Office

Location

Inside the Hume Council building (The HUB), 83 Urana Rd, Jindera, next door to the Hume Bank.

Hours

1.00pm to 5.00pm Monday to Thursday.

Assistance

We provide support to people who are experiencing considerable hardship. We can provide basic food, clothing, equipment and other financial and emotional support should there be a genuine need.

Phone for appointment **02 6026 3001** or **0475 594 073**. Messages responded to promptly.

Counselling Services

For counselling enquiries, please contact the office on **02 6026 3001** or **0475 594 073** or email office@ruralcarelink.org.au and we will put you in touch with the wonderful girls, Michelle and Susan, from One Door Mental Health.

The Jindera News

Published monthly (except January) by Rural Care Link Inc. All profits from advertising and donations are used to support the activities of Rural Care Link Inc.

Contributions and advertisements are invited from groups and individuals and should be negotiated with and forwarded to the Editorial team at

jinderanews@ruralcarelink.org.au

Alternatively, contact the Rural Care Link Inc.

office on **02 6026 3001** or **0475 594 073**.

If you know about someone or something interesting happening in our community, please contact us with the details.

Please Note: The editorial team reserves the right not to publish any article or to modify the presentation to suit the style of the publication.

Carers Support Group

This month the Carers met in the lovely area of the Jindera Village Green. We had a very good attendance of regulars who I invited to participate in some Art Therapy, the theme being , What is Christmas like for a Carer.

We found ourselves discussing the many ups and downs of our role and the Carers were inspired to draw what their year had looked like. I asked them to maybe think of what ride would describe it if we went to Luna Park!



You will see in our artwork a Carousel, the Cha Cha, a Rollercoaster. One Carer drew what depicted going around in circles and a bridge linking Family, Friends and services. We had a couple of images of a very bumpy road and being up the creek without a paddle. Also one very big smiley face which was fantastic.

Everyone enjoyed the different experience with most saying that they had never done anything like that before. Delicious coffee and biscuits added to our enjoyment and support of one another.

Our group is for parents, guardians, family members and other support people who provide ongoing care and assistance to another person, regardless of age, and from anywhere in the Greater Hume Council area.

Next Meeting:

Christmas Lunch – Tuesday 14th December

Please RSVP by 10th December to:

Jenny O'Neill – Coordinator

0438 263 417 or

Vickie Priscina – Facilitator

0428 406 060

Jindera Op Shop

Hours

10am to 4pm Tuesday to Friday and 10am to 1pm Saturday. Closed for lunch from 1pm to 1.45pm weekdays.

Volunteers Wanted

We are in desperate need of more volunteers to keep our wonderful little shop running. If you can spare even 1 day a week, between the hours listed above, you would be welcomed with open arms! No experience necessary. Men and Women are encouraged to apply. Double vaccination is the only mandatory requirement.

Please think about this rewarding opportunity to help your community in the company of other like minded people and call our office today!

02 6026 3001 or 0475 594 073.

Christmas Raffle

Don't forget to grab your tickets in this years Raffle. There are two large hampers filled with items for all the family and there will be a couple of minor prizes as well. \$2 per ticket or 3 tickets for \$5. Drawn on 17th December, 2021.

Other News

Our Op Shop will be closing for Christmas break on Saturday, 18th December, 2021. We will be staying open until 3.00pm on that day and our \$3 bag sale, and half price books sale, will continue until then as well.

In addition to the outdoor veranda market, we will be offering a children's table, with Christmas gifts that Kiddies may like to purchase for members of their family.

As of 1st December, we will be easing our COVID rules, in line with NSW Govt. guidelines. This means that children (under 16 years) will be allowed to enter the store if they are either double vaccinated OR in the company of a double vaccinated Adult.

This should make shopping a little easier for all the Mums and Dads who have been very understanding and patient with us as we navigate this journey.

We will be re-opening on Tuesday 11th January, 2022.

On behalf of all of our wonderful Op Shop Staff, I would like to wish everyone a very happy Christmas and New Year.



Colleen Lord OAM

RCL – Op Shop & Volunteer Co-ordinator



Jindera Community Diary

DECEMBER 2021

| SUN | MON | TUE | WED | THUR | FRI | SAT |
|---|---|--|--|--|---|-----------|
| PLEASE CHECK All Events re COVID RULES | | | | | | |
| |  | | 1 Social Tennis – JTC - 7.00pm Jindera Golf Club Vets – 8.30am Stitch & Chat Craft Group - Anglers Club-house -1.30pm | 2 Jindera Golf Club Ladies – 8.30am Water Aerobics Class Open for all – 6.15pm Men's ONLY - 7.15pm | 3 Gentle Exercise Class Jindera HUB – 10.00am Jindera Anglers Club – Fishing Comp Weekend Jindera Golf Club Chook Run – 4.30pm | 4 |
| 5 Jindera Blokes Walk – Jindera Oval - 7.45am Jindera Museum Tearooms - 11am to 3pm Jindera Golf Club - Sunday Comp. - 8.30am Jindera Craft Shop – 11am - 2pm | 6 Swimming Pool Committee Meeting - 7.30pm | 7 Carers Support Group - Bethlehem Lutheran Church Hall - 10am Water Aerobics Class Open for all – 6.15pm Men's ONLY - 7.15pm | 8 Social Tennis – JTC - 7.00pm Jindera Golf Club Vets – 8.30am | 9 Jindera Golf Club Ladies – 8.30am Water Aerobics Class Open for all – 6.15pm Men's ONLY - 7.15pm | 10 Gentle Exercise Class Jindera HUB – 10.00am Jindera Anglers Club – GM - 5.30pm Jindera Golf Club Chook Run – 4.30pm | 11 |
| 12 Jindera Blokes Walk – Jindera Oval - 7.45am Jindera Museum Tearooms - 11am to 3pm Operating Working Machines 2pm to 4pm Jindera Craft Shop – 11am - 2pm Jindera Golf Club - Sunday Comp. - 8.30am | 13 Museum Meeting - School of Arts Hall - 7.30pm | 14 Water Aerobics Class Open for all – 6.15pm Men's ONLY - 7.15pm | 15 Jindera Golf Club Vets – 8.30am Social Tennis – JTC - 7.00pm | 16 Jindera Golf Club Ladies – 8.30am Water Aerobics Class Open for all – 6.15pm Men's ONLY - 7.15pm | 17 Jindera Anglers Club 5.00pm Gentle Exercise Class Jindera HUB – 10.00am Jindera Golf Club Chook Run – 4.30pm | 18 |
| 19 Jindera Blokes Walk – Jindera Oval - 7.45am Jindera Museum Tearooms - 11am to 3pm Jindera Craft Shop – 11am - 2pm Jindera Golf Club - Sunday Comp. - 8.30am Jindera Anglers Club – Presentation Day 12 noon | 20 | 21 Water Aerobics Class Open for all – 6.15pm Men's ONLY - 7.15pm | 22 Jindera Golf Club Vets – 8.30am Social Tennis – JTC - 7.00pm | 23 Jindera Golf Club Ladies – 8.30am Water Aerobics Class Open for all – 6.15pm Men's ONLY - 7.15pm | 24 Jindera Anglers Club – 5.00pm Gentle Exercise Class Jindera HUB – 10.00am Jindera Golf Club Chook Run – 4.30pm | 25 |
| 26 Jindera Blokes Walk – Jindera Oval - 7.45am Jindera Museum Tearooms - 11am to 3pm Jindera Craft Shop – 11am - 2pm Jindera Golf Club - Sunday Comp. - 8.30am | 27 Jindera Museum Tearooms - 11am to 3pm | 28 Water Aerobics Class Open for all – 6.15pm Men's ONLY - 7.15pm Jindera Museum Tearooms - 11am to 3pm | 29 Jindera Museum Tearooms - 11am to 3pm | 30 Jindera Museum Tearooms - 11am to 3pm Water Aerobics Class Open for all – 6.15pm Men's ONLY - 7.15pm | 31 Jindera Museum Tearooms - 11am to 3pm | |
| PLEASE CHECK All Events re COVID RULES | | | | | | |

Friends in Action (Caritas) Diary:

2021

A Group that can offer emotional and spiritual support and opportunity for growth through caring and personal relationships.

With adhering to Covid-19, Rules and what we can do, check out email notices, please.

5 December 2021

Christmas Dinner.

Contact: Vickie 0428 406060.

“The Hovell Tree Inn Restaurant”, Wodonga Place, Albury. \$40/head. - Meal payment up front, please. 5.30pm; for canapes in the courtyard. To be seated at 6.30pm in the restaurant. Check emails for updates.

17 January 2022:

Planning meeting.

7pm, Jindera Hotel. Please bring your ideas for the year ahead.

9 February 2022:

AGM and Eucharist.

St Paul's 10am. Lunch to follow.



Season greetings and a Joyous Christmas to all.

Many thanks for those whom contributed throughout the year. Couldn't do without you, blessings, stay safe and healthy.

Leader: Jane Barlow 0438 262480

Secretary: Annette Brown 0456 370257

Assistant Leader: Roz Phillipson 0417 457122

Treasurer: Bev Blair 60 262431



Lutheran Church of Australia

SUNDAY SERVICE TIMES

Due to Covid 19,
our regular church services have changed.

Please see our website for
service locations and times

burrumbuttock-parish.lutheran.org.au

Contact: Pastor Christian Fandrich 0457 841 123

Gateway

LIFE CHURCH



LIVE
SUNDAYS

10AM GATEWAY ONLINE

11.30AM VIRTUAL FOYER

12PM SWAHILI SUNDAY



Facebook.com/GatewayLifeChurch

ANGLICAN PARISH OF NORTHERN ALBURY

St. Paul's Jindera
Sundays - 5.00 pm

Priest - The Rev'd Emily Payne
mobile : 0408 666 119
Parish office: 6040 6457

email: vicarnorthernalbury@gmail.com
website: www.anglicannorthernalbury.org.au

😊 **BE COVID SAFE** ✓
Wear A Mask - Wash Hands
Social Distance

St. Mary's Catholic Church, Jindera.

Parish Priest – Fr. P. Murphy
Assistant Priest – Fr. C. Heffernan

MASS TIMES

9.00am Sundays and 9.20am Fridays
during School Terms

Confessions available before Mass.

You're welcome at
**Lavington
Baptist
Church**

Youth Group- 13 years +
7:30 - 9:30pm

Good News Club 9 -12 years
6 - 7:30pm

Sparks 4 - 8 yrs
6 - 7:30pm



www.lavingtonbaptistchurch.com

Friday Nights during school terms
450 Parnall St, Lavington
TEL: (02) 60 215860

FosterMyWall.com

**Support YOUR
Local Business**

SHOP in JINDERA



2021 has been another interesting year, but despite the challenges that schools have faced throughout COVID, we have managed to accomplish many things as a school community. Here a few of the things that have brought excitement to our school this year...

AIS School Improvement Plan

This has been the third year we have worked alongside AIS to implement a school improvement plan. We have focused on the use of data and assessment and begun the journey of updating and improving the systems we have in place to communicate and report to families. Communication is so important to us at St John's and given that parents and friends have been unable to be onsite for the majority of the year, it has proven to be a challenge to find ways to effectively navigate the times and keep our families informed. We are fortunate enough to have support through this initiative continue into 2022 and we are looking forward to the possibilities.



Project Based Learning

PBL is a student-based approach to learning where knowledge and skills are developed over a period of time. Investigation and responding to authentic and engaging questions is the driving force and we love seeing our students think creatively, ask questions to drive their own learning and work collaboratively in small groups. A few problems that have been explored this year are:

- ★ How can we, as fashion designers, design a mini-collection of clothes using preloved materials/items?
- ★ How can we devise a plan to help new immigrants relocate successfully to the Albury/Wodonga region?
- ★ How can the impact of natural disasters on people, places and environments be reduced?
- ★ How can we as travel agents, plan a trip to explore a planet?

Although our 5/6 classroom has been doing PBL for three years now, excitingly, it was introduced across all year levels in 2021.

We look forward to Term 1, where it will again be in action in all classrooms.



THE JINDERA NEWS

Merry Christmas

would like to wish all our readers and supporters
a very **Merry Christmas** and a safe and **Happy New Year**.

A big **thank you** to all the local businesses, organisations and clubs
who continue to advertise with us and send in news articles.

Without your wonderful support we would not be able
to continue to publish our local newspaper.

We look forward to hearing from you in 2022.

Thank You

jinderanews@ruralcarelink.org.au





Justin Clancy MP

MEMBER FOR ALBURY

02 6021 3042 | albury@parliament.nsw.gov.au | justinclancy.com.au | Authorised by Justin Clancy and produced using Parliamentary Entitlements.



**ST JOHN'S
LUTHERAN
SCHOOL**

Learner Profile

As a staff team, we collaborated and came up with a Learner Profile of a St John's Student. After much back and forth, changing, challenging, asking questions, we managed to develop a profile for how we want our students to learn. This Learner Profile goes hand in hand with Project Based Learning and we are excited for the future of our students!

The main areas are:

- ◆ I have empathy
- ◆ I am collaborative
- ◆ I am curious
- ◆ I think deeply, critically and creatively
- ◆ I have grit and perseverance

We believe learning should be fun and engaging and we can't wait to see what 2022 will have in store for us at St John's. We look forward to sharing some exciting news and developments in the new year.

We pray our community – Jindera and surrounds, have a blessed Christmas as we celebrate and remember the birth of Jesus. It's been a challenging and exhausting year in so many ways, but we are grateful for our families, our students and the wonderful community in which we are part of.

Every blessing to you and your family,

The St John's Team



JINDERA SWIMMING POOL

Opening weekend to the pool season took off with a splash on the 6th of November. Fine weather and moderate water temperatures brought out the brave among us.

POOL NOW ACCESSIBLE FOR ALL + ACCESSIBLE /FAMILY TOILET

With the hoist now set up, we commenced training staff and committee members in its safe use. We had plenty of willing volunteers to practice on! **A huge thank you to the Tollis family for their generous donation of the wheelchair, transfer board and some flotation devices.**

This wheelchair can also be used to wheel children down the ramp into the middle sized pool.



We have slings as well for those who are unable to stand to transfer.



Aqua Aerobics with Alana is run on **Tuesday** and **Thursday** - \$10 + admission affordable cost
6:15pm **Open to anyone**
7:15pm **Men's only class**

Ruth will also be running aqua for men and women on **Wednesdays** and **Friday** afternoons at 3.30pm at cost of \$2.00 subsidised by Murrumbidgee Health (contact our President Ruth for more information – (02) 263 806 or 0477 008 753).

COME to a committee meeting and have YOUR say!! We usually meet the first Monday of the month, 7.30pm at the pool meeting room, during the pool season. Details will be posted on the notice board, facebook, and you could get on our email list! (Contact our Secretary Alison 0427 263 398)

Covid restrictions ease early December as per NSW Government health directives... but always remember whether it's a snively nose or gastro... please stay away from the pool until 48 hours post symptoms. If Covid symptoms - please get tested and return a negative result.

If we all work together we can enjoy a Covid free summer and plenty of sun and swimming!

| | |
|--|---|
| Entry fees stay at the very affordable cost of: <ul style="list-style-type: none"> • Adult \$3.50 • Children, Students & Pensioners \$2.50 • Spectators & School Events \$1.50 | Seasons Tickets costs: <ul style="list-style-type: none"> • Family \$160.00 • Single Adult \$90.00 • Pension Family \$110.00 • Pension Single OR Child \$50.00 |
|--|---|

Season tickets can be purchased from any Greater Hume Council office and seasons tickets are valid across all pools.... so you can use this pass to go for a dip **anywhere within the council area!**



Jodie has plenty of great tucker and treats at the Kiosk. Come down and try her slushies and hot chips!
Additional shade available on request.

Book a party by calling 60 263 900.

Opening hours for this season are below: Use the BBQ facilities for a catchup with friends.

Jindera (phone 6026 3900)

| Start Date | End Date | Monday to Thursday | Friday | Saturday | Sunday | |
|--|----------------|--------------------|-------------|-------------|-------------|----------------|
| Sat 06/11/2021 | Sun 12/12/2021 | 3:00 - 7:00 | 3:00 - 8:00 | 1:00 - 8:00 | 1:00 - 7:00 | Closed Mondays |
| Mon 13/12/2021 | Sun 23/1/2022 | 1:00 - 7:00 | 1:00 - 8:00 | 1:00 - 8:00 | 1:00 - 7:00 | Open 7 days |
| Mon 24/1/2022 | Sun 13/3/2022 | 3:00 - 7:00 | 3:00 - 8:00 | 1:00 - 8:00 | 1:00 - 7:00 | Closed Mondays |
| Morning swims at Jindera are held from 6:00 am to 7:00 am Tuesday to Friday (Dec to Feb). | | | | | | |

Greater Hume's Australia Day Celebrations

Wednesday 26 January 2022
at Ten Mile Gardens, cnr Albury and Young Streets, Holbrook
8 am for Breakfast, 9 am Official Ceremony commences.
This is a FREE event.



AUSTRALIA DAY
IN GREATER HUME

The Australia Day celebrations include the Australia Day Breakfast, Australia Day Ambassador's address, presentation of Citizen, Young Citizen, Sports Person/Team, Sports Volunteer and Community Event of the Year and presentation of School Citizenship and Local Awards.

Plenty of shade will be provided. Please bring chair, rug, sunscreen, hat and insect repellent.

Australia Day
Ambassador
to be announced during
December.

Activities after Australia Day Ceremony:

- A bush fire recovery photographic exhibition in Holbrook Hall.
- Swimming Pool (FREE day) is open from 12 noon with lots of fun activities and the pool inflatable.
- Bring your skate board to try out the Holbrook Skate Park.
- Venture for a walk on Ian Geddes Bush Walk.
- Visit the Submarine Museum, National Museum of Australian Pottery and Woolpack Inn Museum.

For more information please contact - Kerrie Wise, Tourism and Promotions Officer
02 6036 0186 or 0448 099 536, kwise@greaterhume.nsw.gov.au.



Pic Citizen of the Year,
Murray Jones, Holbrook

2021 Greater Hume Australia Day

Citizen of the Year
Murray Jones, Holbrook

Young Citizen of the Year
(joint winners) Daniel Hawkins,
Lankey's Creek and Alexandra
Toogood, Henty.

Community Event of the Year
Walbundrie Hub



Pic Young Citizen of the Year, (joint winners)
Daniel Hawkins, Lankey's Creek and
Alexandra Toogood, Henty with Australia
Day Ambassador, Anupam Sharma watching
on.

WATER AEROBICS

JINDERA \$10
PER CLASS

TUESDAY/THURSDAY

&

6.15PM

ANYONE / ANY FITNESS LEVEL

MEN ONLY CLASS

TUESDAY/THURSDAY

7.15PM

CALL 0419332314

**You will save stacks of money when
you shop locally in Jindera.**



Possible establishment of group housing in Jindera

Tracey Stevens is investigating the possibility of establishing group housing in Jindera.

Sussan Ley saw Tracey's posts on Facebook looking for interested persons to contact her and took the time to visit and talk about forward planning.

Tracey can be contacted by email grouphomejindera@gmail.com.

Pictured: Cr. Jenny O'Neill, Sussan Ley, Tracey Stevens,
Vickie Priscilla and Rev'd Emily Payne

*Wishing you all a blessed
Christmas
and a
happy New Year
from the*

JINDERA COMMUNITY FORUM



NSW RURAL FIRE SERVICE

"Fire Permits return to the NSW Southern Border from 1st November"

Fire Permits will be required from the 1st November as the NSW Southern Border eases into the Bushfire Danger Period. Operational Officer Reynir Potter said: "Even though our community has had significant rainfall this Spring, landowners should not be complacent as recent rainfall has increased fuel loads especially in grassland environments. The NSW Rural Fire Service requires landowners to apply for fire permits for the remainder of the bush fire danger period (ending 31 March 2022)"

Permits outline conditions for landowners to safely conduct grass and stubble burning only and ways for landowners to prevent accidental fire escape which impact neighbouring properties. Inspector Sandra Huer, Manager of the RFS Southern Border Team, states that fire permits will only be approved during low risk weather periods. During high fire danger periods, permits are unlikely to be approved.

Senior volunteers are anxious about the risk of escaped fires this season, Tocumwal based Group Officer Mark MacCullagh said: "It's pretty simple, if you don't think you can keep the fire controlled and within your property boundaries, don't light the fire".

Permit application process: All permit applications are to be made through:

<https://www.bit.ly/sbtpermits>

Burn notifications (must be 24 hours in advance) to be submitted by the permit holder at:

<https://www.rfs.nsw.gov.au/fire-information/BFDP/burn-notifications> (or point your smart phone camera at the following QR Code):

**PLEASE USE
QR CODE
TO NOTIFY US
WHEN BURNING**



Fines apply to landowners lighting fires who do not have a permit and/or do not notify the Rural Fire Service 24hrs prior

In addition landowner's neighbours also have to be informed 24hrs prior

Landowners please feel free to seek further information regarding permits by calling the RFS Southern Border Team on (02) 6051 1511 during business hours



Jindera TerryWhite Chemmart Pharmacy

Shop 4&5, 82 Urana Street, Jindera, NSW 2642

OPEN

Monday-Friday: 9.00am to 5.30pm

Saturday: 9.00am to 12 noon

— OFFERING —

- ♦ Health Risk Screening Services
- ♦ National Diabetes Services Scheme
- ♦ Webstar packing
- ♦ Spotcheck (Skin Cancer Screening Programme)
- ♦ Wide range of vitamins
- ♦ MedsCheck
- ♦ Free Blood Pressure Testing
- ♦ Baby Products
- ♦ Home Health Care Aids
- ♦ Giftware
- ♦ Natio Ski Care range
- ♦ Chemmarts Reward Programme

Phone (02) 6026 3271

Fax: (02) 6026 3935

Email: Jindera@chemmartpharmacy.com.au



WATTOS



Wattos Garden Supplies
1 Jarick Way
Jindera Industrial Estate

Deliveries are also Available

0448 600 433

Older Persons
COVID-19 Support Line
1800 171 866

8:30am-6pm (AEST) Monday - Friday

Some older people are vulnerable to COVID-19 but less connected to the Internet and in need of ways to access information for their circumstances. The Older Persons COVID-19 Support Line provides information and support.

Older Australians, their families, friends and carers can call 1800 171 866 (FREECALL) if they:

- would like to talk with someone about the COVID-19 restrictions and its impact on them
- are feeling lonely or are worried about a loved one
- are caring for someone and need some information or a listening ear
- need help or advice about changing the aged care services they are receiving
- need help to access new care services or essential supplies such as shopping
- are living with dementia or are concerned about a friend or family member living with Dementia
- would like to arrange a one-off or regular wellbeing check.

1800 171 866

Older Persons COVID-19 Support Line

Or call COTA Australia directly on 1300 COTA AU

1300 268 228

The Older Persons Support Line is a joint initiative of:



Supported by funding from the Australian Government

EQUIP

OCCUPATIONAL THERAPY

Alison Viedt

0427 263 398

alison@equipoccupationaltherapy.com

see your
ad here

Contact Jindera News
for pricing & more info
jinderanews@ruralcarelink.org.au

Jindera CWA News

C.W.A Murray Group held their meeting at Jindera on 24th November. Jindera members catered for morning tea and lunch.

The meeting confirmed preparations are progressing for the NSW – CWA 100 YEARS CELEBRATIONS IN 2022.

The State Conference Raffle is to help raise funds to hold the Centenary Conference, this will celebrate and promote the work of CWA in NSW over the past 100 years with members and the community.

Tickets are priced at \$2 each. Prizes are 1st \$2000 2nd \$1000 3rd \$500 4th \$250. Books of tickets are now available.

A calendar of events for the year includes Morning Tea at Government House, Sydney, and the State Conference at Randwick Race Course from 2-5th May.

Throughout the State, Morning Teas, High Teas, Garden Parties and Race Days have been planned. Jindera CWA will plan some celebration during the year.

Our next meeting will be 1st December and will include our Christmas breakup luncheon.

Meetings will resume in February, 2022.

WE WISH THE JINDERA COMMUNITY
A VERY HAPPY CHRISTMAS
AND MANY BLESSINGS FOR 2022.

Yours in CWA Friendship,

Bev. Blair.

President.



JINDERA NEWS - CONTACT US ON: jinderanews@ruralcarelink.org.au



Greater
Hume
Council

COUNCIL NEWS November 2021

The meeting was recorded and available for viewing on Council's website <https://bit.ly/35uKFxX>

Business dealt with at the meeting included:

Council's external auditor Mr Brad Bohun from Crowe, attended to report on the conduct of the 2020/2021 audit and the financial result for the year ending 30 June 2021.

Council agreed to offer a contribution of \$88,270 (exc. GST) to the developer of the approved 43 Lot subdivision at Yankee Crossing Road Henty to locate the sewerage pumping station on Yankee Crossing Road rather than in the lane adjacent to the Olympic Highway.

Council agreed to delegate the civic and ceremonial functions of the position of Mayor to the incumbent Mayor (Cr Wilton) from 4 December 2021 until a Mayor is elected in the week commencing 10 January 2022.

Council will call for Expressions of Interest from Real Estate Agents to appoint an Agent to market Lot 2 DP 610499 at Holbrook (known as Camden Forest).

Council confirmed ongoing membership of Riverina Regional Library for the term 1 July 2022 to 30 June 2025. Council will give notice of withdrawal from the Riverina Regional Library Mobile Library Service effective 30 June 2024. Various models of operation are being explored to continue to provide library services post 30 June 2025.

Council noted the introduction of the new rate peg methodology effective 1 July 2022 from the Office of Local Government.

The Lease Agreement with John Holland Transport Asset Holding Entity for the Walla Walla Rural Fire Station will be renewed.

Council approved the extension of the NSW Grain Harvest Management Scheme for the next 12 months to 30 September 2022.

Subject to valuation, Council approved the purchase of 95-99 Albury Street, Holbrook.

Council are currently reviewing the Community Strategic Plan. There are a number of opportunities for the community to contribute to the development of the plan.

The QR code will take you to the survey on our website. The website also advises other means to engage with us.



Meeting agendas and minutes are available for viewing at any time on Council's website.

Go to www.greaterhume.nsw.gov.au for all your Council information such as contact information, to lodge a customer request, news, events, development applications and forms, careers, waste and recycling, library and community services, works and projects, business and investment, grants, youth, Council meetings agendas and minutes, children services, water and waste water, pet registrations, your rates, have your say and so much more.

If you have friends and family visiting go to www.visitgreaterhume.com.au to be inspired and plan your day with lots of suggested tours and activities.

Cr Heather Wilton | Mayor greaterhume.nsw.gov.au



Greater Hume
Children
Services



Wishing you a Merry Christmas and A Happy Safe New Year.

Thank you for all your support

From the Greater Hume Children's Services Team

Our office will be closed from 24th December until the 4th January 2022

Are you interested in becoming a family day care educator?

There is currently an unprecedented demand for care

Please contact us on

(02) 60263877 or email mail@ghchildrens.com.au



Greater
Hume
Council



Lester & Son
Funeral Directors

A tradition of personal, professional care since 1907



Cherie, Tony, John

359 Wantigong St

Albury

02 6040 5066

www.lesterandson.com.au

All Hours • All Areas • Pre-planned Funerals Available



Greater Hume Council are reviewing the Community Strategic Plan (CSP).

**The CSP is driven by you,
the community, for the community.**

We want to know you what you **love about life** in Greater Hume, your **BIG Idea**, what our **preferred future** looks like and how we can all **work towards** achieving that.

**COMPLETE THE SURVEY FOR YOUR CHANCE
TO WIN A COMPOST BIN FOR YOUR HOME.**



Greater
Hume
Council

FANCY A COFFEE AND A CHAT?

CHAT WITH COUNCIL STAFF ABOUT
OUR **COMMUNITY STRATEGIC PLAN**
AND YOUR BIG IDEA!
WALK AWAY WITH A **FREE COFFEE/TEA!**

THURSDAY 9 DECEMBER 2021

10AM - 1PM

FOODWORKS - CULCAIRN

IGA - HENTY

IGA - JINDERA

GH CHILDREN'S SERVICES - WALLA WALLA

2PM - 5PM

IGA - HOLBROOK



MICK'S TREE HEIGHT REDUCTION & SHAPING SERVICES

SPECIALISING IN:

TREES - felling/lopping
/pruning & removal

**PRUNING &
STUMP GRINDING**
- hedges/bushes/shrubs
/roses & palm trees
(chipping available)

OTHER SERVICES -
gutter cleaning/
rubbish removal

**Special
Discounts
for
Pensioner
Services**

MICK: 0427 316 497

Proficient Home & Yard
MAINTENANCE

Allen Davison
0473 386 371
Servicing Albury / Wodonga and surrounds.

No Job too Big or Small
All inquiries Welcome

Local Jindera Business!



**BOBCAT
WHILEY**

- Bobcat with Trax
- Trencher
- Hay Spikes
- Post Hole Digger
- Excavator
- Tip-Truck
- Slasher

PHONE GEOFF: 0408 698 028
Dights Forest Road, Jindera, NSW 2642

(02) 6026 3990



Bank Brighter.

humbank.com.au/bankbrighter

Hume Bank

JINDERA PUBLIC SCHOOL

Contemporary Quality Learning with that country feel!



Principal: Emma Andrews | Assistant Principals : Des Knight, Michelle Parker & Liam Clayton
phone: 60263280 email: jindera-p.school@det.nsw.edu.au website: www.jindera-p.schools.nsw.gov.au



Jindera Public School Sunshine Day

Late last week, the students of Jindera Public School helped raise money for The Albury Wodonga Regional Cancer Centre Trust Fund by celebrating “Sunshine Day”.

Students were asked to come dressed in their sunniest colours and bring a donation to help raise valuable funds for this local community venture.

As always, our students did not disappoint and the classroom and playground was immediately transformed from our normal maroon to a colourful array of yellow, gold and orange tones.

Staff and students enjoyed a terrific day but the importance of helping support a local charity was not lost, with the students raising a little over **\$220.00** through donations.

Every year, the Jindera Public School Student Representative Council brainstorm local charities to support and this is just one of the events that was planned to build our student’s understanding of community spirit and support.

Thank you Mr Madgwick for organising the day. Here are just a few pictures of our students, dressed to shine!



Sunshine Day at JPS



Jindera Community Garden



STALL and MEMBERSHIP

Our **November STALL** was another great success; many thanks to the Community who put their energy and time into this event to made it happen.

With 25 Memberships. Plants Jams Cakes total \$940.45.

Thanks heaps everyone that donated and used up their energy and time to make this happen



Raffle Winners:

Basket: Cathy Gooley - Second: Russell - Third: Lea Farmer

Raffle Donations

were from our generous community many thanks to:

IGA Jindera for the goodies

Karen Burton for \$30 Butcher voucher

Glenallen Honey

JT & CO Coffee vouchers

Why Membership?

We Plant and Grow - We Make and Create

We meet new people - Membership Fees: \$10

Deposits to:

Hume Bank ACC: 1112 999 88 BSB 640 000

Donations are Welcomed!

Elizabeth was a keen to buy some plants for her beautiful garden.



What a great team of girls I have helping ..Cathy Cheryl Lea Judy Dianne behind me



Anyone can come and plant something at the moment ...
... Judy and I have planted heaps.

Now we have water it makes it easier to look after the plants.



The shed is now locked
Thanks Peter for organising locks ...Judy was helpful



LOOK at the generosity we have in the community ...

... thanks heaps **The Black Crow**

who donated a wheelbarrow and garden tools to the Jindera Community Garden

Please message
Eileen White
0400 023290
You may join the Jindera Community Garden Group on Facebook with more updates

Happy Gardening Everyone!



CHRISTMAS PARTY

at

Jindera Pioneer Garden

on

Sunday 5th December

4pm Start

Sausage Sizzle



Jindera Community Garden
Members FREE!

Social Members - \$5
for barbecue and salad

Please bring
chair drinks plates COINS

\$5 and \$10
voucher Draws
Bring \$5 Kriss Kringle

Lucky prizes happening
Everyone Welcome

Come and see what the local
Jindera Community Garden
is all about





Discovering
your future
at St. Paul's

BUILDING FOR SUCCESS IN STUDENT WELLBEING & LEARNING OUTCOMES

At St Paul's we support a positive culture of wellbeing which is fundamental to successful learning. Our support team consisting of learning enhancement, counsellors, pastoral, boarding and medical experts work alongside students to develop their learning and personal growth. Small class sizes allow for a unique learning environment supporting the individual.

Round One enrolments for 2023 start February to March.
Scholarships available.

Day school alongside casual, weekly and full-time boarding opportunities



**ST PAUL'S
COLLEGE**
WALLA WALLA, NSW

Enquiries please visit www.stpaulscollege.nsw.edu.au or call (02) 6029 2200

JINDERA TYRE SERVICE

129 URANA STREET JINDERA 02 6026 3400

GOODYEAR

DUNLOP
SUPER DEALER

MAXXIS

MICKEY THOMPSON
PERFORMANCE
M/T.
TIRES & WHEELS



KUMHO TYRE
Better. All-ways

OFFICIAL SUPPLIERS

FUGE EARTHWORKS PTY LTD

- SCRAPERS • DOZER • LOADER • EXCAVATOR
- GRADER • TIP-TRUCK • TRAXCAVATOR
- ROLLER & BACKHOE FOR HIRE



- Dam Construction, Enlargement and Repairs
- Site Excavations, Drainage, Driveways
- Bulk and All General Earthworks

MICK FUGE: 0428 480 341

Ph/Fax: (02) 6026 3571. Email: fuge.1@bigpond.com
375 Molkentin Road, Jindera, NW 2642.



Quality Meat & Personal Service
- Bulk Meat Specials -

Brad & Tina Taylor
Shop 7, 87 Urana Rd,
Jindera, NSW 2642 (02) 6026 1886

**Please follow all 'Corona Virus' rules
during your daily activities and
practice social distancing.**

Stitch and Chat Craft Group

This group meets on the first Wednesday
afternoon of each month at 1.30pm at
the Jindera Anglers Clubhouse.

All welcome, just bring whatever you are
working on and come along for a chat and cuppa.

We usually finish at around 3.00pm

Judy Gray on 0418 617 385 for further information.



COOEE BOOKKEEPING

Contract bookkeeping for small to medium businesses
Xero and MYOB

Judith Hudson
0431 027 268

judith.hudson9@gmail.com

JINDERA

• PIONEER MUSEUM •

The year end is fast approaching and this brings a time to enjoy meeting with family and friends again after a year of maybe's. The museum is a wonderful place to bring visiting family and friends and on Sundays and every day between Christmas and New Year, you can also grab some lunch or a home-made piece of cake or slice. The gardens are looking spectacular and they are a lovely spot to just sit and enjoy the atmosphere. The museum will open every Friday night in January for our Alfresco Twilight Opening, 6pm – 10pm. Live music, some tasty treats to purchase and the bar open makes for a pleasant place to catch up and unwind. Bookings on line at Trybooking.

The museum has had some good news with the awarding of a Liquor and Gaming grant for the erection of an all-abilities toilet structure at the museum. This will be a very welcome addition to the museum complex as the present facilities do not cater for wheelchairs etc. We are looking forward to this work commencing early in the new year.

The Tim Fischer Working Machines crew commenced their operational days in November with a visit from the Yackandandah Vintage Motor Club; this group have offered to support our open days and working machines days by bringing parts of their own collections to display and operate. The second Sunday each month the motors and machines that are operation will be cranked or encouraged to unleash their piston power for all to hear and enjoy. Visitors and enthusiasts will be able to watch these wonderful old motors leap into life and, in some cases, motor around the yard.

Our Christmas Wreath making Workshops will again be held this year, their reputation has spread and all three sessions for this on Sunday 12th December are booked out. One of Alison's lovely wreaths is already adorning the Museum entrance. These are a beautiful addition to any Christmas table or home. All items are supplied for you and we have had some amazing creations produced at the workshops in the past two years.

I have included a schedule of our events over the next 2 months.

Tea Room open every Sunday from 11am.

- Sunday 12 Dec – Christmas Wreath making workshops (Booked Out)
- Sunday 12 Dec – Operating working machines: 2-4pm

26 Dec – 31 Dec: Tea Room open every day from 11am

- Friday 7 January 2022 – Twilight Opening from 6pm: live music, food available & bar open
- Friday 14 January 2022 – Twilight Opening from 6pm: live music, food available & bar open
- Friday 21 January 2022 – Twilight Opening from 6pm: live music, food available & bar open
- Friday 28 January 2022 – Twilight Opening from 6pm: live music, food available & bar open
- Sunday 9 January – Operating working machines: 2-4pm
- Sunday 13 February – Operating working machines: 2-4pm

Contact info@jinderamuseum.com.au or phone 0408409842

We would like to thank everyone who has supported the museum though-out this year, as a volunteer or a visitor to the museum. The continued success of the museum is thanks to the great volunteers who keep the door open, who work in our tea room and at our events and functions and in the myriad of other jobs that are needed to maintain or run the organisation, and to the people who visit the museum and attend the events we hold though-out the year. We greatly appreciate the support.

We wish you all a very Happy Christmas and we all look forward to a New Year that is a little less restricted than the last.

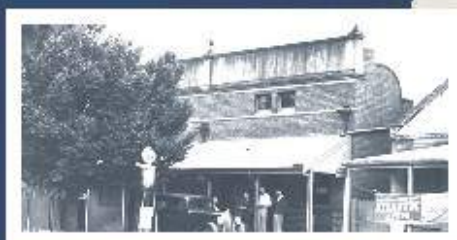
Margie Wehner

President

Jindera Pioneer Museum & Historical Society Inc.

Experience the Pioneer Lifestyle

Set on 2 acres, featuring multiple dwellings and beautiful gardens, we welcome you to come take a trip back to life 150 years ago



JINDERA

• PIONEER MUSEUM •

OPEN from

10am - 4pm every day


(October to April)

Tea Room Open every Sunday from 11am

www.jinderamuseum.com.au

118 Urana Street, Jindera, NSW

P: 0408 409 842

 JinderaPioneerMuseum

JINDERA COTTAGE CRAFT SHOP

Lots of gifts for that special
Christmas present
including beaded jewellery, cards,
tea towels, children's clothing, baby items
and heaps more, all handmade by our very
own talented locals.

Open most Saturday and Sundays
in the lead up to Christmas.

*Look out for the brightly coloured flags
on the front gate as this indicates we are open!*



Merry Christmas to all.
From Eileen, Vivien, Annie
and Craft shop members.

You can find us in
Urana St. Jindera
located next to the Jindera Museum.



Plumbers, Drainers & Gasfitters
Bobcats, Excavators, Tippers & Trenchers
Farm Water Supply
Reticulation, Trenching
Troughs, Tanks & Solar Pumps
Septic Systems
Septic & Trade Waste Pumping
Sand & Gravel Cartage
Grader & Water Cart Hire

**If you want to dig it, pipe it, pump
it or fix it – we can do it!**

Mobile: 0403 191 780

www.blueysplumbin.com.au



Jindera Village Post Office

For postal information and product specials

Bank with over 70 banks and financial institutions

Phone:
6026 3201



Civil Celebrant

—Judy Gray—

•Weddings •Baby Namings •Funerals

Conducted in Style

TELEPHONE: 6026 3329

MOBILE: 0418 617 385



"FOR ALL YOUR PRINTING REQUIREMENTS"

- Business Cards • Letterheads • Books • Raffle Tickets
- Complete in-house design service • All business stationery
- Invoice Books • Stickers • Brochures • Leaflets

(02) 6026 3611

Congratulations to our award winners for the **2021 season received at Presentation on November 28th**

Football Club Person of the Year – The Canteen Crew
Netball Club Person of the Year – Samantha Creasy

Junior

Under 11's Netball:

Best and Fairest – Meadow Wright
Sportsmanship – Lily Vroomen

Runner Up – Charlotte Wright

Under 13's Netball:

Best and Fairest – Ivy Cossor
Most Improved – Amelia Raymond

Runner Up – Ava Parker & Bonnie McMillan

Under 14's Football:

Best and Fairest - Dom Wayenberg
Most Consistent – Aiden Wright
Most Improved – Wyatt Pleydon
Players Player – Ashton Kilmartin
Goal Kicking – Bill McMillan

Runner Up – Bodhi Kerr
Most Determined – Tom Delahunty
Coaches – Adam Jones
Encouragement – Cruz Wayenberg

Under 15's Netball:

Best and Fairest – Mackenzie Thomson
Most Determined – Madison Disley

Runner Up – Lucy Lovell
Coaches – Tahlia Steinke

Under 17's Netball:

Best and Fairest – Zara Hiscock
Most Improved – Chloe Watson

Runner Up – Amba Russell & Lily Delahunty

Under 17's Football:

Best and Fairest – Joe Woeckel – Hynes
Most Consistent – Jordan Carter
Most Improved – Will Bladwell
Most Determined – Dusty Middleton & Kai Wilson

Runner Up – Brodie Porta & Jake Cooper
Goal Kicker (100 goals) – Jake Cooper
Coaches – Caleb Jones



Senior

C Reserve Netball:

Best and Fairest – Hayley Riley
MVP – Melanie Delahunty

Runner Up – Rhian Dower
Players Player – Breanna Taylor

C Grade Netball:

Best and Fairest – Montanna Kerr
MVP – Kealy Steeper

Runner Up – Samantha Lampe
Players Player – Allie Morgan

Reserves Football:

Best and Fairest – Jonathan Kalina
Goal Kicking – Dallas Lanfranco
Most Determined – Nick Palmer

Runner Up – Tom Lynch
Most Improved – Beau Smith
Most Consistent – Alan Kerr

B Grade Netball:

Best and Fairest – Sarah Parker
Coaches – Katelyn Donney

Runner Up – Dariah Farrington
Players Player – Hayley Williams & Sarah Parker

A Grade Netball:

Best and Fairest – Sharla Sutcliffe
MVP – Tayla Vogel
Players Player – Sharla Sutcliffe & Tayla Vogel

Runner Up – Tegan Vogel
Most Determined – Lucinda Morgan

Seniors Football:

Best and Fairest – Mitch Lawrence
Coaches – Jesse Harris
Most Determined – Michael D'Arcy

Runner Up – Daniel Middleton
Most Consistent – Ryan Speed
Most Improved – Sam Irwin

*Do you know someone who would
benefit from having a homecooked meal?*



Pick up or delivered Call 0421 706 578

**Want to eat better,
but sick of cooking for yourself?**

Better things to do than prepare a meal?

**We are happy to assist with any
dietary requirements**

**Call us on 0412 706 578 or email
dotskitchens@gmail.com for full menu
Live Local Buy Local**



NA Auto
AUTOMOTIVE ELECTRICAL
SPARE PARTS AND ACCESSORIES

Neil and Kathy Anderson
94-96 Urana Street PO Box 27 Jindera NSW 2642
Ph: 02 6026 3391 Fax: 02 6026 3722 Mob: 0428 578 061
Email: sales@naauto.biz Website: www.naauto.biz

JINDERA HAIR HEALTH & BEAUTY

TEL: 02 6026 3434
91 Urana Street, Jindera

BLD Machining

**CNC MACHINING
FABRICATION & WELDING**

Precision:

Milling, Boring & Screwcutting,
Repairs, Maintenance & Modifications
to all plant & equipment

Guaranteed fast and professional service.

Phone Bruce:

0448 790 666

6 BEGG DRIVE, JINDERA

**Fixing the old and broken, designing
and manufacturing the new!**



Phone: 02 6026 3277 Email: clinic@jinderavet.com.au

**Hours: Mon-Fri 8.30am-6pm Sat 8.30am-11am
89 Urana Street, Jindera NSW 2642**


**Daryl Klein B.V.Sc.(Hons) Veterinary Surgeon
Brigit Pitman B.V.Sc.(Hons) Veterinary Surgeon**

With the bonus of wonderful staff!



McMillan Electrical

Craig McMillan
All Electrical Services

 PO Box 477, Jindera, NSW

 mcmillanelectrical44@gmail.com

 0418 966 207

NSW License 151911C
VIC License REC-31010



The 2021 season will “officially” conclude with “Closing Day” on Sunday 5th December, with a “2 Ball Ambrose” starting 8.30/9.00 followed by the club presentations from around 2pm and lunch.

The usual comps will continue throughout the summer, with the 2022 season beginning early March as per the soon to be published 2022 calendar.

Current Competition days as follows :-

- **Sunday – Men’s 18 holes**, Stableford (unless notified differently) Tee-off 8.30/9.00.
- **Wednesday – VETS 9 Holes**, Stableford (unless notified differently) Tee-off 8.30/9.00
- **Sunday/Thursday – Ladies 18 Holes**, Stableford (unless notified differently) Tee-off 8.30/9.00
- **Friday – Chook Run – 9 Holes**, Open to all, Tee-Off Currently 3.30, will become 4.30/5.00 with daylight savings. Can also be played throughout the week – Play your game, place cards – signed and verified by partner - with \$5.00 in an envelope and slide under the door.

Happy golfing !

Membership - As mentioned previously, the number of social golfers using our course – and paying Green Fees - seems to be growing every week, which is great for the golf club and the community.

The cost of Memberships for the remainder of the year (until 30 March) is currently reduced to \$50.00/ adult and will be reduced as the year progresses, so a **GREAT TIME TO BECOME A MEMBER** - fill in a membership form - and email it to admin@jinderaclub.com We can help you get a handicap (if you want) and join in our very social competition days – or simply play at your leisure without having to worry about green fees!

Pennant – The **Mighty Jindera Golf Club** took out the 2021 MDGA Pennant competition last Sunday the 21st Nov at Thurgoona. It was a hard fought affair against a very competitive Culcairn side where all games bar one went to the 17th and 18th holes before being decided. Thanks go out to Steve Keshire and the MDGA (Murray Districts Golf Association) team for organising another great Pennant competition.

The competing clubs were :- Jindera (A/B), Culcairn (A/B), Holbrook, Howlong (A/B), Thurgoona (A/B) Corowa (A/B), Albury and MDGA All Stars.

Course Works – The grounds committee have been working hard over the past few weeks installing some “Couch” turf around some of the greens in a bid to encourage it to spread out to the fairways thereby improving the approach to the greens. Currently targeted are the 1st, 6th, 8th and 9th greens. We ask all players to treat the new work as “GUR” and please take care, as this is the start of on-going works in this area.

Score Results:

SUNDAY COMPETITION

31/10/2021 – Stableford – 5 Players

| Name | GA Hcp | Dly Hcp | Net Score | Result |
|-------------------|--------|---------|-----------|---------|
| Ron Smithenbecker | 14.2 | 15.0 | 33 | \$15 |
| Don Singleton | 32.7 | 34.0 | 30 | 3 balls |
| Trevor Freeman | 18.9 | 19.0 | 29 | b |

7/11/2021 – Stableford – 14 Players

| Name | GA Hcp | Dly Hcp | Net Score | Results |
|-----------------------|--------|---------|-----------|----------|
| Mihi Smith | 51.6 | 54.0 | 43 | W \$25 |
| Ron Smithenbecker | 14.1 | 15.0 | 42 | R/U \$15 |
| C McMillan | 9.5 | 10.0 | 40 | B |
| D. Klein | 21 | 22.0 | 39 | B |
| D. Singleton | 32.8 | 34.0 | 36 | B |
| Bob Sheerans | 19.5 | 20.0 | 36 | B |
| B. Polkinghorn | 15.7 | 16.0 | 36 | B |
| Rawinia Smithenbecker | 17 | 17.0 | 34 | B NTP |

14/11/2021 – Stableford – 12 Players

| Name | GA Hcp | Dly Hcp | Net Score | Results |
|-------------------|--------|---------|-----------|----------|
| Russell Gueho | | 23 | 35 | W \$25 |
| Sandra Kilo | | 28 | 31 | R/U \$15 |
| Peter Chaston | | 37 | 31 | B |
| Daryl Klein | | 22.0 | 30 | B |
| Ron Smithenbecker | | 13 | 28 | B |

21/11/2021 – Stableford – 6 Players

| Name | GA Hcp | Dly Hcp | Net Score | Result |
|----------------------|--------|---------|-----------|----------|
| Brenten Polkinghorne | 0 | 16.0 | 35 | W \$20 |
| Bruce Hill | 0 | 33.0 | 34 | R/U \$15 |
| Garry Spurr | 0 | 33.0 | 31 | NTP 2B |

Vets –

Wednesday Mornings 8.30/9.00 – 9 Holes

3/11/2021 – Stableford – 10 Players

| Name | GA Hcp | Dly Hcp | Net Score | Result |
|---------------|--------|---------|-----------|--------|
| Don Singleton | | 30 | 19 | W |
| Barry Verbunt | | | 17 | R/U |
| Ron Knights | | | 14 | B |
| Peter Chaston | | 36 | 13 | B |
| G Miller | | | 14 | B |

10/11/2021 – 3 Ball Ambrose – 16 Players

| Name | GA Hcp | Comb Hcp | Net Score | Results |
|---------------|--------|----------|-----------|---------|
| Frank Carmody | | 23.67 | | W |
| Barry Verbunt | | 23.67 | | W |
| John Wiesner | | 23.67 | | W |
| Dave Castles | | | | R/U |
| Ian Pertz | | | | R/U |
| Mark Dickson | | | | R/U |



*Winners are Grinners
Jindera 2021 Pennant winners*

*Left to Right -
Ash Paech, Craig McMillan,
Aaron Melbourne, Trevor
Freeman, Greg Allen (Capt)
(Graham Moore and Bob
Sheerans unavailable).*



Laying new turf on the 6th green

Follow us on Facebook or our website at
www.jinderagolfclub.com.

Jindera Country Golf Club
Public group · 28 members

About Discussion Rooms Topics Events Media Members

17/11/2021 – Stableford – 12 Players

| Name | GA Hcap | Dly Hcp | Net Score | Results |
|---------------|---------|---------|-----------|---------|
| Don Singleton | | | 19 | W |
| M. Clayton | | | 17 | R/U |
| D. Briggs | | | 13 | B |
| D. Castles | | | 12 | B |
| G. Witterveen | | | 12 | B |

24/11/2021 – Washed Out

Chook Run – 9 Holes - Friday 3.00/3.30

5/11/2021 – Stableford – Players

| Name | GA Hcap | Dly Hcp | Net Score | Results |
|----------------|---------|---------|-----------|---------|
| Daryl Klein | 0 | 22.0 | 19 | W \$15 |
| Craig McMillan | 0 | 10.0 | 18 | R/U 3B |
| Rob Boyd | 14.6 | 14.0 | 15 | B |
| Strop Weldon | 0 | 31.0 | 15 | B |
| John Weisner | 0 | 28.0 | 14 | B |
| Bob Sheerans | 0 | 20.0 | 14 | B |
| D. Gray | 21.6 | 22.0 | 13 | B |
| N. Brand | 21.5 | 22.0 | 13 | B + NTP |

12/11/2021 – Stableford – 8 Players

| Name | GA Hcap | Dly Hcp | Net Score | Results |
|-----------------|---------|---------|-----------|---------|
| Barry Verbunt | 0 | 34 | 18 | W \$15 |
| Heather Chaston | 0 | 34 | 16 | R/U 3B |
| Peter Chaston | 0 | 30 | 13 | B |
| David Goode | 0 | 31.0 | 12 | B |

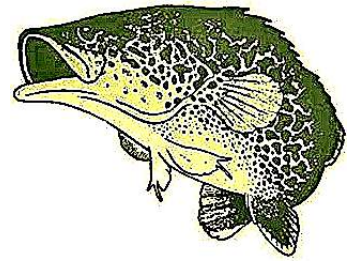
19/11/2021 – Stableford – 18 Players

| Name | GA Hcap | Dly Hcp | Net Score | Results |
|------------------|---------|---------|-----------|---------|
| C. McMillan | 9 | 9.0 | 19 | W \$20 |
| A. Melbourne | 0 | 18.0 | 18 | R/U 3B |
| R. Smithenbecker | 0 | 13.0 | 17 | B |
| D. Gray | 0 | 23.0 | 17 | B |
| N. Brand | 0 | 22.0 | 16 | B |
| D. Rixon | 0 | 26.0 | 15 | B |
| R. Gueho | 0 | 23.0 | 13 | B |
| Strop Weldon | 0 | 31.0 | 13 | B |
| D. Klein | 0 | 15.0 | 13 | B |

26/11/2021 – Stableford – 9 Players

| Name | GA Hcap | Dly Hcp | Net Score | Results |
|-------------------|---------|---------|-----------|-----------|
| R. Gueho | 0 | 23.0 | 16 | W \$10 |
| C McMillan | 0 | 6.0 | 15 | R/U CB 2B |
| T. Freeman | 0 | 16.0 | 15 | B |
| Ron Smithenbecker | 0 | 13.0 | 14 | B+NTP |

JINDERANGLERS CLUB INC.



November was a busy month for the club holding a mid-month fishing comp to enable a cod opening fishing comp to be held on the weekend of December 3rd, 4th and 5th.

We also had a very successful Bunnings's sausage sizzle on Saturday, 20th November, the profit from this plus other fund raising will allow us to put 5000 cod fingerlings into the Murray River at the 12 mile reserve early next year. Great news to all fishers. Thanks to Wade, Sham, Wayne, Laz, Chris, Squeaky, Dave, Graham and Ricko for their hard work at Bunnings.

Thanks to Trevor Lieschke (Watt) for fixing the guttering at the clubhouse, Laz for his mowing and BJ for cleaning and tidying up the clubhouse.

November Comp was held over a wet, windy very uninspiring weekend where only the devoted anglers ventured out.....fools. Winner of the best fish went to Jason Boyd with a great catch n release yella of 650, Jason won the best bag of fish as well with 10 nice redfin, 3530.

Just beating Laszlo, Peli put in a good effort with a yella 370 and bag of reddie 3260. Zol Peli had a bag of redfin 2760, Wade Morey had a trout 390 and 3 redfin for a bag of 1220, Brian Shannon had a nice 420 trout and Trevor Brown had 2 trout, 390 and 350.



Jason Boyd with his 650 yella, an absolute stonker of a fish.

No one owned up to doughnuts for fishing without catching anything however Leif, Chris, Nicki, Phil, Wayne, Lynchy and Kevin Brown were awarded doughnuts on suspicion.

What's coming up and save the date.

Cod Opening Fishing Comp will be held from **Friday 3rd December** commencing at 5pm (not 1 second earlier Boydy) with the weigh-in at the clubhouse at 5pm on **Sunday 5th December**, a gourmet feed will be provided and plenty of doughnuts will be provided.

Next **General Meeting** will be held on **Friday 10th December** commencing at 5.30pm, snacks will be provided.

Christmas Party - with seriously good food, Presentation Day and monster Christmas Raffle will be held at the clubhouse on

Sunday December 19th commencing at 12.00pm 'ish.

We will be also celebrating **BJ's 60th birthday.....so** lets get along and enjoy a ripper day.

Tight lines and happy cod ing!



It's nearly cod time, whoo-hoo!

**Jindera Anglers
hard at work at a
very successful
Bunning's
Sausage Sizzle**





Leif, Shane and Body at the November measure in.



Dave Gray snared a nice 52cm yella



What next? Lazy measuring in filleted redfin,



Unlucky 55cm yella, just shows if you drag a lure around long enough anyone can catch one

Zoo Peli fluked a couple of good redfin



Jindera



Trading Hours

Mon – Fri 7:30am-7:00pm

Sat & Sun 8:00am-7:00pm

Find us on  to see our
great specials, new lines
recipes and loads more!

JINDERA COMMUNITY DIRECTORY

| | | | |
|-----------------------------------|--------------|--------------------------------------|--------------|
| Anglers Club | 0409 537 452 | Morgan Country Car Club..... | 0448 004 706 |
| Friends in Action | 0438 262 480 | Multi Purpose Stadium Committee..... | 0429 960 616 |
| Childrens Services | 6026 3877 | Netball Club..... | 0407 186 073 |
| Community Forum | 6026 3544 | Pony Club | 6026 3484 |
| Conway Printing..... | 6026 3611 | Pre School..... | 6026 3468 |
| CWA..... | 0428 263 318 | Recreation Reserve | 0438 263 417 |
| Football Club..... | 0409 263 658 | Red Cross | 1800 733 276 |
| Friends of Jindera Wet Lands..... | 0407 180 730 | Rural Care Link | 6026 3001 |
| Golf Club..... | 0418 690 510 | St Johns Lutheran School..... | 6026 3220 |
| Jindera Lutheran Church..... | 0427 200 035 | St Mary MacKillop College..... | 6045 9422 |
| Jindera Pioneer Museum | 6026 3622 | St Paul's Anglican Church..... | 6040 6457 |
| Jindera Public School..... | 6026 3280 | Swimming Pool | 6026 3900 |
| Jindera Post Office..... | 6026 3201 | Tennis Club..... | 0424 179 051 |



Buy Local

Buying locally means local jobs and
keeps our town alive.

Be Local - Think Local - Buy Local