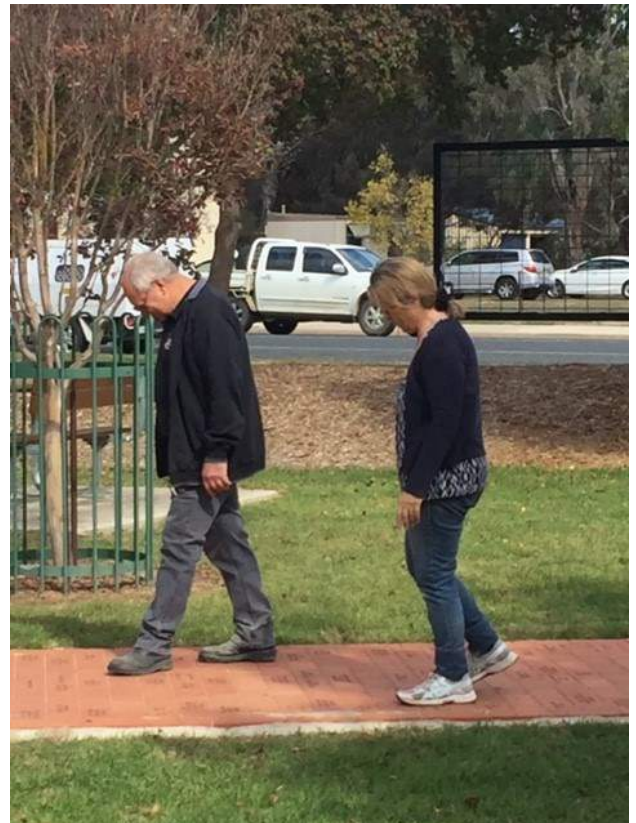


# THE JINDERA NEWS

Jindera & District FREE Local Newsletter  
Distributed on or by the first Saturday of the month  
*Published by Rural Care Link Inc*

## FINAL PAVERS LAID IN THE HERITAGE PATH

The 150<sup>th</sup> committee have finished the heritage path with another 96 stamped pavers added to the path, thanks to all who have helped with the construction, a special thanks to Deb Delahunty and Kevin Albert for leading this project.







# OFFICE HOURS FOR THIS OFFICE HAVE RECENTLY CHANGED.

MONDAY—10 a.m. to 3 p.m.—Acting Welfare Officer

TUESDAY—10 a.m. to 3 p.m.—Administration Officer

WEDNESDAY—10 a.m. to 3 p.m.—Administration Officer

THURSDAY—10 a.m. to 3 p.m.—Administration Officer

FRIDAY—10 a.m. to 3 p.m.—Acting Welfare Officer

**OFFICE IS CLOSED EACH DAY BETWEEN 1—1.45 P.M.**

WE APOLOGISE FOR ANY INCONVENIENCE THIS MAY CAUSE BUT  
REMAIN ABLE TO ASSIST YOU IF YOU WISH TO PHONE

**60263001, 0411282320 OR 0435957931 AND LEAVE A MESSAGE**

## Rural CareLink - Op Shop

Normal hours of business

MONDAY 10.00am - 1.00pm

TUESDAY 10.00am - 4.00pm

WEDNESDAY 10.00am - 4.00pm

THURSDAY 10.00am - 4.00pm

FRIDAY 10.00am - 4.00pm

SATURDAY 10.00am - 1.00pm

PLEASE NOTE THAT THE OP SHOP IS CLOSED FOR LUNCH  
BETWEEN 1:00 and 1:45 pm

## JINDERA COTTAGE CRAFT SHOP

Thank you to all our members who made and donated cakes and slices for our Mothers Day Cake Stall, also items for our raffle.

The lucky mum who won the beautiful basket of goodies was Megan Hillary of Jindera. Congratulations.

Made by locals lots of handmade jewellery, bags, baby items and woollen items etc. for sale.

Keep a look out on the first Saturday of the month (morning) when the shop will be open and remember we can open any other time by appointment.

Eileen (0400 424 437) Annie (0409 309 387)



## *Friends in Action (Caritas) Diary:* 2019

*A Group that can offer emotional and spiritual support and opportunity for growth through caring and personal relationships.*

12 June **Holbrook happenings:** M/tea 10am Submarine Café, Raymond St Holbrook.  
Lunch 1pm The Ten Mile Café, 120 Albury St, Holbrook.  
Depart St Paul's 8.45am.  
Contact: Annette Brown 0456 370257 or Lenore Clothier 0458 265221.

**Leader:** Jane Barlow 0438 262480

**Assistant Leader:** Roz Phillipson 0417 457122

**Secretary:** Annette Brown 0456 370257

**Treasurer:** Bev Blair 60 262431

*Friendship in Action*

Jindera News is published monthly (except January) by Rural Care Link Inc. All profits from advertising and donations are used to support the activities of Rural Care Link Inc. Contributions and advertisements are invited from groups and individuals and should be negotiated with and forwarded to the Editor. The editorial team reserves the right not to publish any article or to modify the presentation to suit the style of the newsletter.

# St. Mary's Catholic Church, Jindera.

Parish Priest – Fr. P. Murphy  
Assistant Priest – Fr. C. Heffernan

## MASS TIMES

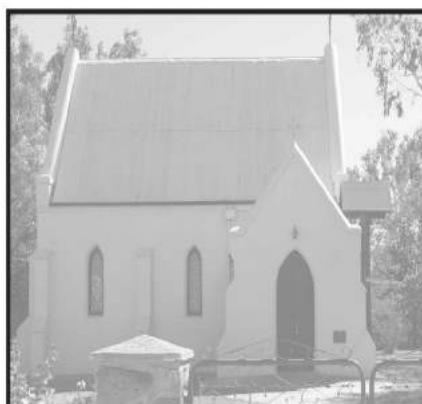
9.00am Sundays and 9.20am Fridays  
during School Terms

*Confessions available before Mass.*

# Gateway LIFE CHURCH

## 5PM WEEKLY SUNDAY SERVICES JINDERA COMMUNITY HUB

Starts Sunday February 10  
Call (02) 6025 6332 for more!  
[gatewaylifechurch.org.au](http://gatewaylifechurch.org.au)



### ANGLICAN PARISH OF NORTHERN ALBURY

St. PAUL'S JINDERA

2nd & 4th Sunday – 10.30am

PRIEST:

Archdeacon Catie Inches-Ogden

MOBILE:

0417 552 180

PARISH OFFICE:

6040 6457

WEBSITE:

[www.anglicannorthernalbury.org.au](http://www.anglicannorthernalbury.org.au)



## Lutheran Church of Australia

### SUNDAY SERVICE TIMES

BETHLEHEM CHURCH - 9.00AM  
Adams St Jindera

ST JOHNS CHAPEL - 10.30AM  
ST Johns School Hall

You're welcome at  
**Lavington  
Baptist  
Church**

Youth Group- 13 years +  
7:30 - 9:30pm

Good News Club 9 - 12 years  
6 - 7:30pm

Sparks 4 - 8 yrs  
6 - 7:30pm



[www.lavingtonbaptistchurch.com](http://www.lavingtonbaptistchurch.com)

Friday Nights during school terms  
450 Parnall St, Lavington  
TEL: (02) 60 215860



**Jindera Men's Shed Night.** Second Monday of every month  
at 6.30pm at Bethlehem Lutheran Church Hall, Adams St,  
Jindera. Great BBQ dinner soft drinks, TimTams, tea and  
coffee, \$10 donation. Come and share a meal, learn about  
life and catch up for a chat. Everyman has a story.

— All welcome —



in Greater Hume Shire

**BUY  
LOCAL**



# Native Plant Giveaway

West Hume Landcare and the Squirrel Glider LAMP Project are running a **Native Plant Giveaway** for both West Hume Landcare members and locals in the area indicated by the map.

The aim of the Native Plant Giveaway includes:

- offering locals a chance to use local native plants in gardens and on their farms,
- learning about local plants suitable for gardens and revegetation projects,
- learning about projects and opportunities to do further planting and revegetation works and
- meeting some of the people involved in local groups and organisations that also do revegetation works.

## Overview

Orders will remain open until 80 orders of 15 plants have been submitted.

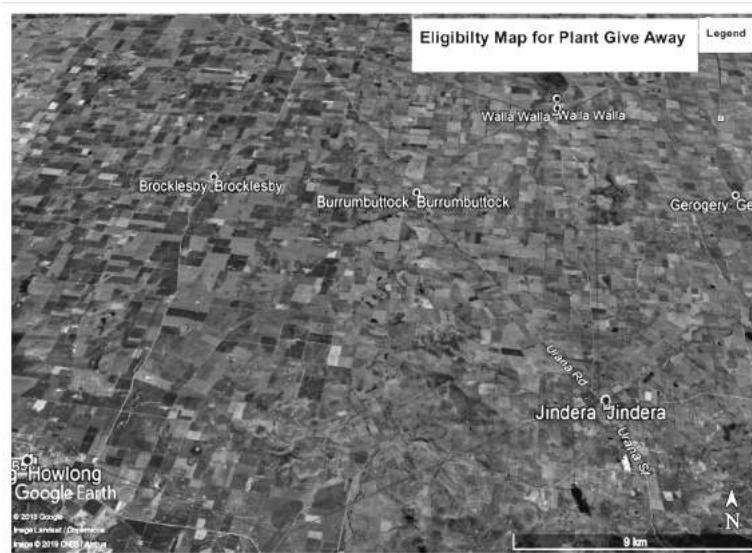
Only one order per household will be accepted.

Ineligible orders from outside the designated areas or for more than 15 plants will be deleted.

Ensure you are available to pick up your plants on either Wed 19th June, 9am - 6pm or Sunday 23rd June, 8am - 12pm from Wirraminna Environmental Education Centre, Howlong Rd, Burrumbuttock.

Contact Kathie Le Busque on [Kathie@petaurus.net.au](mailto:Kathie@petaurus.net.au) to request an information pack, for further details on the plant species available.

When you're ready to place your order, go to:  
[form.jotform.co/83437799997890](http://form.jotform.co/83437799997890).



## DO YOU WANT TO LEARN SOME CHINESE COOKERY



**WE HAVE CLASSES ARRANGED FOR  
(15TH JUNE, 2019 ) FULLY BOOKED  
AND  
22ND JUNE, 2019  
(10 SPACES AVAILABLE)  
1.30 P.M. AT THE HUB.  
COST PER PERSON \$45**

**PHONE DENISE FOR FURTHER INFO 0411282320  
SPONSORED BY RURAL CARE LINK INC.**



# JINDERA

• PIONEER MUSEUM •

The Museum continues to provide interesting events with this past month seeing 90 people enjoying a camp fire oven meal in the grounds of the Museum to the magic background music of WhiteLine. A trial run the week before allowed the volunteers to be guinea pigs from cooking in the old bread oven..... yum.

We continue to host school excursions with three taking place this past month; Holy Spirit, Victory and Trinity Anglican College. Coach bookings continue also and it's great to see them spread out into Jindera after their Museum visit.

The main store cellar is now partially used as a secure storage area with work undertaken by Modem Constructions.

The Executive continues to keep their eyes peeled for grant opportunities and to liaise with other like organisations to keep abreast of trends.

Planning is well underway for the Heritage Dinners to take place in June and July. Great to see these returning as they were for many years a must attend event for Jindera and surrounds.

We wish Joan, a long term volunteer, a great trip overseas and safe return.

If you have an interest in becoming involved, drop in during opening hours and leave your contact details. We have a great crew and would welcome you.

Watch this space for upcoming events and don't forget to visit this amazing Jindera asset with family and friends.



Sincere thanks to the Committee and Members of the Jindera Golf Club for hosting Allan's commemorative 9 hole celebration of his life. Allan loved every minute spent at the golf club and we are very grateful to the Committee and Members for granting Allan's final wish.

The golf day was a perfect send off and will always be remembered.

*The Family of Allan Justin*

## FOR ALL YOUR BOARDING NEEDS, CATS and DOGS DOGGY DAYCARE



268 Jelbart Road, Jindera

02 6026 3830





# Jindera Red Cross

the  
power of  
humanity



On Tuesday 7<sup>th</sup> May 2019 at the Red Cross meeting in Jindera, a report was given of the success of the Blumes Winter Fashion Show.

A lovely display of winter clothes were on display and sales were brisk raising \$350 which was sent to Red Cross Head Quarters for Red Cross Calling. A light luncheon was enjoyed by all.

The raffle was won by Karen Freeman and the lucky door winners were Marie Carrall, Carol Moretti, Valmae Ryan, Martha and Erin Ryan.

The Annual Zone Conference will be held at Culcairn on Wednesday 22<sup>nd</sup> May at which several members will be attending.

The next Jindera Red Cross meeting will be:

4<sup>th</sup> June 2019 at 1.30pm at the School of Arts Hall, Jindera.

## Message from Australian Red Cross

**MAKE A DIFFERENCE:** A HOW-TO GUIDE TO HELPING OTHERS AND CHANGING THE WORLD

Here's our ultimate list of things you can do today to make a difference  
and help change the world for the better.

Life isn't about possessions and accomplishments. It's about what you've done with those things – what you have given back. It's about caring enough for others and seizing the opportunity when you have the chance to do some good.

*So, how can you help? Here's some inspiration:*

Give away your pre-loved clothes, Be a friendly face,

Pledge your birthday

Be a changemaker, Share the messages,

Learn to save lives, Volunteer,

Give to a cause close to your heart, Advocate for a cause  
and Donate your blood.



**RURAL CARELINK OP SHOP**

**WELCOME**

**MEN or WOMEN**

To

**VOLUNTEER**

EITHER: FULL or HALF DAYS

### **CONTACT:**

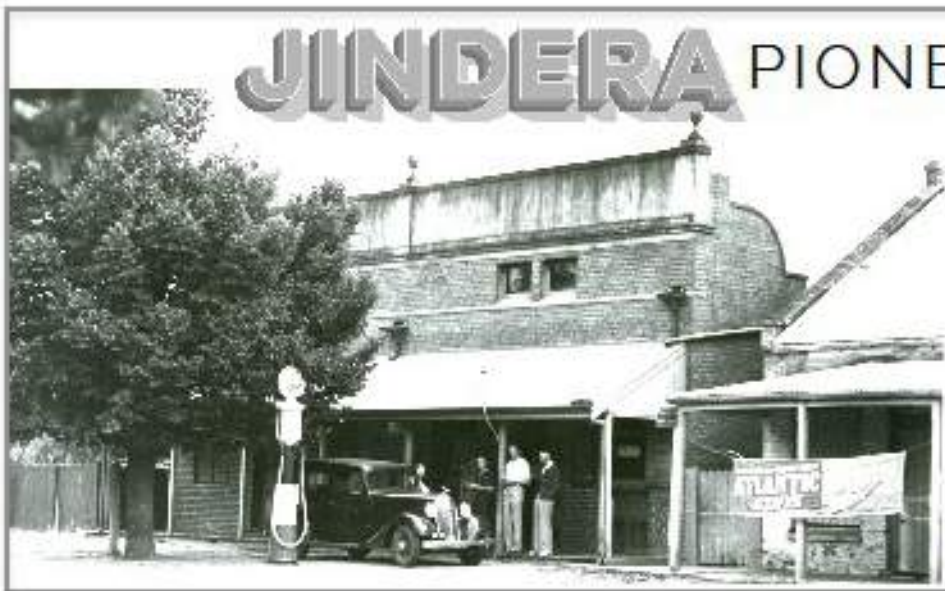
**Denise** – Welfare Officer

**Email:** dosb1405@gmail.com

**Phone:** 0411 282320



**Thank You!**



# JINDERA PIONEER MUSEUM

Celebrating 150 years with 7 historic buildings,  
over 20 rooms and galleries & 2  
sprawling acres of grounds.

Welcome!

Open 7 Days  
10am - 4pm

Ph: 6026 3622  
[info@jinderamuseum.com.au](mailto:info@jinderamuseum.com.au)  
[www.jinderamuseum.com.au](http://www.jinderamuseum.com.au)  
[f jinderapioneermuseum](https://www.facebook.com/jinderapioneermuseum)

When did you last visit the Museum?

## News from Rural Care Link



The services of Rural Care Link continue with the assistance of our dedicated volunteers.

Our office continues to be manned for those seeking assistance with the phone diverted and/or able to be checked when there is no one physically in attendance. We no longer provide actual food vouchers but in their stead provide the food requested which is topped up with supplies we have stored for emergencies.

Referrals this month have included Financial Counselling and Centrelink assistance.

Our Op Shop had an amazing month, with the days leading up to and the day of the Garage Sale being boomers. We thank you for your donations and support which allow us to do our work across the Greater Hume Shire. Without this and our amazing Volunteers we would be nothing. We have two new volunteers commencing this month and of course would welcome more. Trish, our former Admin Assistant, now carries out that role as a volunteer when family commitments allow.

Networking with other services continue with our Chairman and Secretary attending Partnership

Agency meetings in Albury and Greater Hume to ensure we remain aware of opportunities for our clients.

In the past month or so our Secretary has applied for three grants to allow us to plan for some exciting and new workshops at the Hub, targeting issues which have presented to us over the past year or so.

Two upcoming events of a more social nature are Chinese Cookery classes and a Makeup workshop targeting the more mature woman, although younger people would of course be welcomed. Ads for these are included in this edition of Jindera News.

We again auspiced the Annual Jindera Garage Sale which was well supported. Thanks again to Leeny and Greg Mason and family for their organisation skills, Mary-Lynne and Pat Hayes for being the registration site for those taking part and to those who assisted both on the previous day and day of the Event in distributing and collecting the Garage Sale signs which were once again provided by Ray White Real Estate.

## You will save stacks of money when you shop locally in Jindera.





# SAINT MARY MACKILLOP COLLEGE ALBURY LIMITED



197 Urana St, Jindera NSW 2642  
PO Box 310 Jindera NSW 2642  
Phone: 02 60 459 422 Fax: 02 6026 3745  
Email: [office@smmc.nsw.edu.au](mailto:office@smmc.nsw.edu.au)

At the end of term one our school held our annual Athletics Carnival. It turned out to be a great day. Well done to all students who gave it their best. Congratulations to our green team for taking out the win.



Our school hosted Xavier High School for the first round of the Country Secondary School Chess Teams Competition. Four games were fiercely played, with SMMC claiming the first round 3-1. Well done to all the students who participated on the day.



This term in Science, Year 1 students have been investigating the weather. From experiments, like making rain in a jar, to artworks based on the theme of weather (look at our trees covered in snow and our stylish gumboots in a puddle), students have been engaged in a variety of learning experiences.

Students in Years 3-6 have been enjoying cooking and gardening lessons as part of the Stephanie Alexander Kitchen Garden program. Students have been planting, harvesting, preparing and eating fresh seasonal foods.





# ROTHMORE

## FOREVER BEARS

---

From material of those who have passed, we carefully create bears for you to love and hold forever.

Bears can be made in various sizes and a zippered pouch and cannister to store ashes or trinklets.

Progressive discounts on multiple orders. An amazing and unique gift that will always be close to you.



### Heart Foundation Walking is coming to a town near you!

As part of the Culcairn Healthy Towns Challenge, Alicia from the Heart Foundation will be holding information sessions in Culcairn, Henty, Holbrook and Jindera. The sessions will cover:

- Information about Heart Foundation Walking
- The benefits of physical activity and keeping your heart healthy
- How to use the Heart Foundation Walking app
- Upcoming Walking challenges

Walking is a great way to stay healthy and to meet the recommended 30 minutes of daily physical activity.

All sessions are free and open to everyone. So, whether you are already part of a walking group, have been thinking about joining a group or would just like some more information. Join us for a walk and to learn more about keeping your heart healthy.

Tuesday June 18 <sup>th</sup>		
When	What	Where
11am – 12pm	Information Session	Holbrook Library
2pm – 3pm	Information Session	Jindera Library

# St John's Lutheran School

## Jindera NSW 2642



*A quick snapshot of our learning...*

### Year 5/6 Sustainability Investigation

Our Year 5/6 students are leading by example at St John's. Our students conducted a sustainability project throughout Term 1.

The challenge was set to develop a new process to effectively communicate ways to reduce waste whilst raising awareness in our school community about the importance of living waste wise.



Our students worked diligently in teams to research, plan, design, create and showcase their ideas.

Parents, staff and their peers were amazed with the level of detailed information that was researched, the effort given to the tasks and the fantastic ideas we can all do to be more active with looking after our world through being smart about waste.

They presented their findings to the local waste management director who assessed their work and provided encouraging and useful feedback.

Our students also made reusable bees wax wraps and shopping bags from old clothes. They held a fundraiser with proceeds going towards new recycling bins.

Following our Year 5/6 leaders' example, St John's is using the student's research to begin a whole school focus on sustainability. We are conducting an investigation into usage of rubbish, water, electricity and identifying new ways to minimise waste.



### Garden Gang

We are extremely lucky to have a motivated group of parents who generously donate their time to run a weekly garden gang club. We have a huge turn out of students who are actively engaged and motivated to keep our gardens healthy and thriving!







## Learning Through Play

We are blessed to have a Preschool as part of our learning community here at St John's.

Little Saints is a school-based preschool facility within our school with access to a range of additional resources, staff and facilities.

We see each child as unique and have a strong family and environmental focus. We strive to create a welcoming and safe atmosphere for all our children. Our philosophy in learning is heavily 'play based.'

Little Saints is a fantastic addition to our identity in the Jindera community and a great way of building relationships with new families.



## Japanese Student Cultural Exchange

Last term, we welcomed students and staff from Japan, who visited us as part of a cultural exchange. It was wonderful to see the students interacting together and sharing their cultures. We are looking forward to traveling to Japan later in the year to experience life in Japan. This experience provides an opportunity for our students to interact with and learn from people from a different culture and to participate in new and unique experiences beyond their own communities. It also assists students to develop positive relationships with others, understand a broader range of perspectives to develop the knowledge and skills needed for living positively in our multicultural society.



Brad Moss - Principal





## **BUILDING RELATIONSHIPS IN OUR COMMUNITY**

### **ACKNOWLEDGEMENT OF SORRY DAY**

Each year, the National Sorry Day Committee encourages all schools, community groups, workplaces and individuals to commemorate the anniversary of this important event in Australia's history. On Monday 20 May, children from K - 6 acknowledged "National Sorry Day." It was a wonderful acknowledgement with the whole school seated in a circle. School leaders did a fantastic job at running the assembly. Assisted by Ms Blair, Caiden and Violette lit the Sorry Day candle and Zane, Danny and Billie presented the National Apology to Mrs Andrews. Mrs Christensen read the entire school a dreamtime story!

Throughout the day, all student's contributed to a mural depicting the Aboriginal Flag using their handprints.





# JINDERA VILLAGE ANTIQUES



SHOP 1, 95 URANA ROAD, JINDERA, 2642



**Open 7 Days  
from 8am till 4pm**

**Deliveries are also Available**

Jindera Garden Supplies  
1 Jarick Way  
Jindera Industrial Estate

**0448 600 433**

JINDERA HAIR HEALTH & BEAUTY

TEL.: 02 6026 3434  
91 URANA STREET, JINDERA

**NA Auto**

AUTOMOTIVE ELECTRICAL  
SPARE PARTS & ACCESSORIES

Neil and Kathy Anderson

94-96 Urana Street, PO Box 27, Jindera, NSW 2642

Ph: (02) 6026 3391. Fax: (02) 6026 3722. Mob: 0428 578 061

Email: sales@naauto.biz Website: www.naato.biz



THE JINDERA COMMUNITY FORUM on

facebook

# Jindera CWA News

The CWA held a very successful and friendly Conference in the Albury Entertainment Centre which was hosted by the Murray Group.

Arch Deacon Catie Inches-Ogden from North Albury Anglican Parish co-conducted the welcoming church service at which over 900 people attended. Following the church service several members from Murray Group attended a Twinning dinner at Soden's Hotel with Wanthella Group. Jindera Branch had helped this drought stricken branch by paying CWA membership for their members for 2019.

During the course of the Conference over 5 days, 24 motions and 5 motions of urgency were discussed. Results of these will be published in the CWA Journal. Excellent and delicious lunches were prepared by the Albury Entertainment Centre catering service and were much appreciated by everyone.



**CONFERENCE HOSTESSES - "LADIES IN PINK"**  
L-R Olivia Hanel (Jindera) Lyn Jacobsen (Pleasant Hills)  
Janet Broockmann (Albury).

## COMPETITIONS – THE BEST OF THE BEST IN NSW C.W.A.

**HANDICRAFT** - Murray Group was placed equal second overall.

Jindera's Kay Thompson received 10/10 for her cross stitch picture, she was one of top 10 in NSW.

**COOKING** – Jindera's Virginia Morey was place 3<sup>rd</sup> with her Lime Cake. Congratulations ladies.

Martins Tours took visitors to Beechworth and Albury surrounds. The Conference closed on Friday, 10<sup>th</sup> May.

**STATE PRESIDENT** - Annette Turner from White Cliffs completed a 3 year term as President and the new President is Stephanie Stanhope from Bega.

JINDERA NEXT MEETING IS WEDNESDAY 5<sup>TH</sup> JUNE  
IN THE SCHOOL OF ARTS HALL 10AM – ALL WELCOME.

**REMINDER** - FRIDAY 21<sup>ST</sup> JUNE JINDERA BRANCH WILL HOST THE MURRAY GROUP INTERNATIONAL DAY ON NEW GUINEA.

*Yours in CWA Friendship.*

*Bev. Blair.*

Publicity Officer.



## **JINDERA COMMUNITY FORUM**

Next Meeting is at the **Jindera Community Hub** (entry via rear door) on  
\*\*\*\*\* **Tuesday, 18 June 2019** \*\*\*\*\*  
at 7:30pm



*Come and join a group of locals who are interested in our community and its people, and who would like to help improve the facilities our community offers to both visitors and residents alike.*

**For more information contact:**  
**Greg Finster** — [jinderacommunityforum@bigpond.com](mailto:jinderacommunityforum@bigpond.com)  
**Kathy Anderson** — [sales@naauto.biz](mailto:sales@naauto.biz)



## Greater Hume Children Services... What have we been getting up to

Where has the weeks, months gone, lots and lots happening, some very special playgroups in the last month, May has been very busy?



We had a Playgroup in the Greater Hume Shire community. A big thank you, to Burrumbuttock Preschool who provided the venue for this morning's playgroup session. We enjoyed exploring their wonderful outside play spaces. Working together we made football goals, before sharing in a kick of the football! The dirt pit was a hive of activity with lots of shared play and learning. What a wonderful morning exploring this space and connecting with others. Thank you so much for having us. Then we celebrated what an important role families play in community wellbeing at our National Families Week Playgroup at Jindera Hub. *It takes a village to raise a child* and it was wonderful to see so many educators, children, parents and community members at Playgroup.



On 18<sup>th</sup> May Gerogery Public School held a family fun day for the OSHC service,. The OSHC program works Monday to Friday before and after school, if you are interested please contact Lisa , Emma or GHCS for further information.

And last but not least, Greater Hume Children Services had a huge turnout for our Biggest Morning Tea Playgroup at Jindera Community Hub on Thursday 23<sup>rd</sup> May 2019. We were very

lucky to have a visit from Kentucky Farm, getting to spend time up close with the animals. The two Alpacas, Caramel and Lollipop joined Fiona who shared the Alpacas with Maracas Story with the children and Educators. We enjoyed a lovely shared morning tea after the Story, along with the Orange Juice freshly squeezed by the children.

Special thank you to Woolworths, at Whitebox Rise Wodonga who kindly donated to our morning tea. A huge thank you to all for coming and donating to this wonderful cause we managed to raise over \$230.



in Greater Hume Shire

**BUY LOCAL**  
**BUYING LOCAL MEANS LOCAL JOBS**  
**and keeps our town alive.**  
**BE LOCAL— THINK LOCAL—BUY LOCAL**



## In its 21<sup>st</sup> year, the Jindera Community Garage Sale continues to be a successful event.

The village came alive with hundreds of people roaming and driving through the streets. The beautiful weather encouraged many locals to get out and about and provided many opportunities to catch up with neighbours and friends. Reports about the day were mixed:

Negative - it was slow; sales not as robust; take-away food outlets were not as busy; advertising poor

Positive - sales were great; we sold out; I heard it advertised on the radio; and it is a great social event for the town .

Over 70 registrations were received and 170 maps sold. This annual garage sale show cases the village and surrounding area to many visitors who travel from North East Victoria and the Southern Riverina. The wellness benefits to the community is vast through the opportunity to declutter, find a bargain and social networking. In addition, the proceeds are used to assist the local community.



We are very grateful for the sponsorship of Ray White Albury, Jindera Post Office, Jindera Bakery, Jindera IGA, Next Level Café, Fire and Ice Training and The Fox and Brew. These businesses contribute to the cost of advertising leaving the total amount raised of \$1591 available to the Rural Care Link for community needs.





## Buyers, sellers and happy on-lookers at the Jindera Community Garage Sale.





**Briese Janissen**  
& Associates

Chartered Accountants



## NEED AN ACCOUNTANT?

— CONTACT US TO MAKE AN APPOINTMENT —

**Ph: (02) 6022 0700**

We are a firm of Chartered Accountants who provide quality  
**Taxation, Accounting and Business Management Services.**

Both **Mark** and **Terri** have many year's experience in public accounting and taxation affairs for a broad range of clients in business, including Self-Managed Super Funds.

**Office:** 621 Macauley Street, (Cnr: Guinea and Macauley Sts) Albury, NSW 2640.

**Postal Address:** P.O. Box 721, Albury, NSW 2640.

**Email:** [terri@bjan.com.au](mailto:terri@bjan.com.au) or [mark@bjan.com.au](mailto:mark@bjan.com.au) Visit our Website for further information at [www.bjan.com.au](http://www.bjan.com.au)

## BLD Machining

### CNC MACHINING FABRICATION & WELDING

#### Precision:

Milling, Boring & Screwcutting,  
Repairs, Maintenance & Modifications  
to all plant & equipment

**Guaranteed fast and professional service.**

Phone Bruce:

**0448 790 666**

6 BEGG DRIVE, JINDERA

**Fixing the old and broken, designing  
and manufacturing the new!**

## Civil Celebrant

—Judy Gray—

•Weddings •Baby Namings •Funerals

Conducted in Style

TELEPHONE: 6026 3329

MOBILE: 0418 617 385



## FINE FEATHERED FRIENDS



W & B Coulthard

Chickens (day old), Pure-bred Barnevelder, Sussex, Orpington  
and various Peking Bantams.

Also settings of fertile eggs.

Chinese Geese – breeding pairs and goslings

— Orders taken —

SPECIALISING IN RARE BREEDS/PUREBRED POULTRY

"Waybet Rise", Jindera, NSW 2642. Ph: (02) 6026 3225

## Jindera Veterinary Clinic



**Daryl Klein**  
B.V.Sc (Hons)

Veterinary Surgeon

Ph/ Fax: (02) 6026 3277

Mob: 0427 046 236

email: [jvcvet@tpg.com.au](mailto:jvcvet@tpg.com.au)

Hours: Mon-Fri 8.30am-6.00pm  
Sat 8.30am-11.00am

## COOEE BOOKKEEPING

Contract bookkeeping for small to medium businesses  
MYOB, Reckon, Xero

**Judith Hudson**

**0431 027 268**

[judith.hudson9@gmail.com](mailto:judith.hudson9@gmail.com)





**Harley & Rachel Lloyd**

Shop 2/3 82-88 Urana St,  
Jindera, NSW 2642

**Tel: (02) 6026 3821**

**Fax: (02) 6026 3827**



## **AWARD WINNING PIES RIGHT HERE IN JINDERA!**

*We also bake pasties, sausage rolls, breads, rolls, cakes and scrolls.  
We make milk shakes, sandwiches, wraps and great coffee.*



**Open from 7.30am-6.00pm, Mon-Fri and 7.00am-3.00pm Sat.**



**Jindera Village Post Office**

**Bringing Banking to your community**

**Bank with over 70 banks and financial institutions**

**Also a great range of unique gifts.**

**Ph 60263201**

## **JINDERA PiZZa**

### **TRADING HOURS**

WED 5.00 - 8.00PM

THUR 5.00 - 8.30PM

FRI 5.00 - 9.00PM

SAT 5.00 - 9.00PM

SUN 5.00 - 8.00PM

**Orders will be taken up to 15mins  
before closing time**

**(0 2) 60 26 30 55**

## **Stitch and Chat Craft Group**

This group meets on the first Wednesday afternoon of each month at 1.30pm at the Jindera Anglers Clubhouse.

All welcome, just bring whatever you are working on and come along for a chat and cuppa.

We usually finish at around 3.00pm.

**Judy Gray on 0418 617 385 for further information.**





# The annual Jindera Fun Run for 2019

This event was held at Jindera on Sunday 28th May with many members of this great local community taking part in the run. A big thank you to all the sponsors and organisers.



## Sponsors

PGH Pavers and Bricks  
Briese, Janissen & Assoc.  
Liechke's Transport  
Albury Galvanizing  
Jindera Hair, Health and Beauty  
Jindera Butchery  
Jindera Bakery  
Jindera Pharmacy  
Silent Empire  
Sportspower

Sportsman's Warehouse  
Elder's  
Jindera Garden Supplies  
NA AUTO  
Jindera PO  
Courtney Gordon Myootherapist  
Walla Walla Hair Salon  
Next Level Café  
Fox and Brew  
Regent Cinemas  
Commercial Club  
IGA.



# Winners of the 2019 Jindera Fun Run



Congratulations to the overall Men's and Women's 10km winners today: Ashley Hoffman and Julianna Phelps



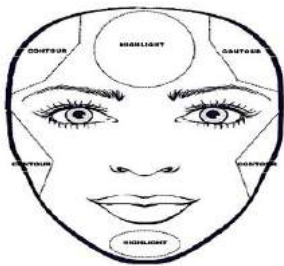
Congratulations to the Jindera Netball Club who took out the Inaugural Club Challenge with more participants than the Jindera Football Club!

A great effort by all.



Congratulations to St John's Lutheran School Jindera who took out the trophy for the 2019 Primary Schools Challenge.

**Taryn, of Body Beautiful Jindera, has kindly offered her professional knowledge to Rural Care Link in order that we might run a:**



**Over 50s make-up and how to apply it..**

**Workshop.**

**1.00 pm July, 2nd 2019**

**at The Hub**

This workshop is specifically designed for the more mature woman, whose skin has changed over the years but other age groups are also welcomed of course.

Bring your current makeup with you.

Bookings essential for catering purposes .... as afternoon tea will be provided.

Cost is \$20 per person.

Bookings to Denise Knight (Secretary—Rural Care Link)  
on 0411282320 or dosb1405@gmail.com



## COUNTRY *Dating*

We Create Love Passion & Families



*Matchmaker - Marriage Celebrant  
Funeral Celebrant & JP*

*Shop 2 /95 Urana St Jindera.*

**0437077786**

[www.countrydating.com.au](http://www.countrydating.com.au)



## THE JINDERA COMMUNITY FORUM



**Quality Meat & Personal Service**  
– Bulk Meat Specials –

Brad & Tina Taylor

Shop 7, 87 Urana Rd,  
Jindera, NSW 2642

**(02) 6026 1886**

JINDERA COUNTRY GOLF CLUB

*Your town....Your golf Course*

## WANTED GOLFERS

**Yes, Jindera golf Club needs Players**

Only \$10 for 9 holes or stay and play 18 for

Still only \$10

Yearly memberships only \$80

Comps every Wednesday Vets 9 HOLES 7.30-8.00am

Saturday 9 holes from 8.30 and Sundays 18 holes from 8.am

Phone David 0427808395 or Daryl 0409537452

For more info go to:

Facebook: jindera country golf club

[www.jinderagolfclub.com](http://www.jinderagolfclub.com)

## OPENING EARLY 2019 24HOUR GYM

# FIT

**(FIRE AND ICE TRAINING)**



Foundation memberships available soon  
All enquiries to Fiona Brown 0438 262 644







## Antennas

- Digital Antenna Installation/Service
- Specialising in difficult reception areas
- Satellite and VAST installations
- Five-year warranty on all work

— — **DIGITAL ANTENNAS** — —

**FULLY INSTALLED FROM \$280**

### FREE QUOTES

Servicing Jindera and surrounding areas

Call Phil Packer

**0422 374 930**

email: [ppacker@pdinstallations.com.au](mailto:ppacker@pdinstallations.com.au)

[www.pdiantennas.com.au](http://www.pdiantennas.com.au)

## FUGE EARTHWORKS PTY LTD

- SCRAPERS • DOZER • LOADER • EXCAVATOR
- GRADER • TIP-TRUCK • TRAXCAVATOR
- ROLLER & BACKHOE FOR HIRE



- Dam Construction, Enlargement and Repairs
- Site Excavations, Drainage, Driveways
- Bulk and All General Earthworks

MICK FUGE: 0428 480 341

Ph/Fax: (02) 6026 3571. Email: [fuge.1@bigpond.com](mailto:fuge.1@bigpond.com)  
375 Molkentin Road, Jindera, NW 2642.



**"FOR ALL YOUR PRINTING REQUIREMENTS"**

- Business Cards • Letterheads • Books • Raffle Tickets
- Complete in-house design service • All business stationery
- Invoice Books • Stickers • Brochures • Leaflets

**(02) 6026 3611**



## Lester & Son

Funeral Directors

*A tradition of personal, professional care since 1907*



**Tony Egan & John Vogel**

359 Wantigong St  
Albury

**6022 2521**

49 Thomas Mitchell  
Dr, Wodonga

**6022 2523**

[www.lesterandson.com.au](http://www.lesterandson.com.au)

*All Hours • All Areas • Pre-planned Funerals Available*

## STONE BENCHTOPS & VANITIES



**Get Stoned by MPI**

**3/900 Calimo St**

**North Albury**

**6040 3350**

[MPIstone@mchardypinter.com.au](mailto:MPIstone@mchardypinter.com.au)





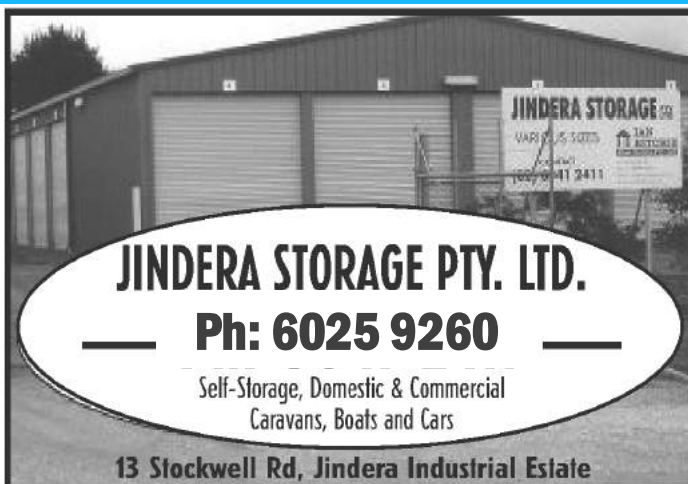
LOOKING FOR A NO FUSS HOME LOAN?

**3.79%** P.A.\*  
FLEXI LOW RATE  
INTEREST RATE AND  
COMPARISON RATE\*\*

SWITCH TO OUR FLEXI LOW RATE HOME LOAN

Apply online at [humbank.com.au/lowrate](http://humbank.com.au/lowrate)

\*Rate correct as at 6/3/2019 and may change without notice. This rate is available to owner occupied loans (both refinance and new loans to Hume) with principal and interest repayments with a minimum loan amount of \$60,000. The rate may be withdrawn without notice at any time, at which point only approved loans funded with 3 months of the offer end date will continue to be eligible. \*\*Comparison rate based on a secured loan of \$150,000 over 25 years. WARNING: This comparison rate is true only for the examples given and may not include all fees and charges. Different terms, fees or other loan amounts might result in a different comparison rate. Terms, conditions, fees, charges, and normal lending criteria apply. Hume Bank Limited ABN 85 051 888 556 AFSL and Australian Credit Licence No. 244248.



**JINDERA STORAGE PTY. LTD.**  
— **Ph: 6025 9260** —  
Self-Storage, Domestic & Commercial  
Caravans, Boats and Cars  
13 Stockwell Rd, Jindera Industrial Estate



**BOBCAT  
WHILEY**

- Bobcat with Trax
- Trencher
- Hay Spikes
- Post Hole Digger
- Excavator
- Tip-Truck
- Slasher

**PHONE GEOFF: 0408 698 028**  
Dights Forest Road, Jindera, NSW 2642  
**(02) 6026 3990**

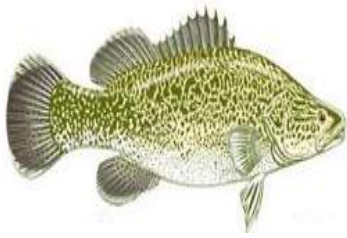
## Jindera Anglers Club — Firewood Raffle Winner

The winner of the Firewood Raffle held at the annual Jindera Garage Sale was Sharon from Culcairn who gave the wood to her dad in Wodonga .....  
..... he was very happy.

A happy Mark receiving his trailer load of wood his daughter won and gave to him.







# JINDERS ANGLER'S CLUB Inc.

April saw the club fairly active with wood getting and raffling the wood as well as the Annual garage sale, Wombat also assisted the SWAA with the Yanco field days promotion and we managed to fit in a fishing competition as well.

The wood raffle and garage sale were successful, and this will allow the club to restock Murray cod at the 12 mile reserve again this year.

Thanks to all the members who cut, split and sold tickets for the firewood raffle and also thanks to everyone who assisted with the food sales at the garage sale. Fanbloodytastic effort!!

The fishing comp held on the 5th, 6th and 7th April with the majority of fishers heading to the upper Murray, Graham had the camp set up brilliantly with a huge fire going all weekend successful comp and the camp.

The winners of the comp were best bag Bryan Shannon 5.37, including catch and release fish, best fish junior went to Tylar Herard with a 59cm cod, Tylar also had best catch and release fish with 2 cod, 87cm and 92cm, Tylar also was awarded largest fish released for the comp. Laz Peli also caught and released a 68cm Murray cod. All others....thanks for coming and a great weekend away.

Next fishing comp is on as we write this article.

The final fishing comp for the year will be an open comp on June 21<sup>st</sup>, 22<sup>nd</sup> and 23<sup>rd</sup>, commencing at 4pm Friday with the weigh-in at 4pm Sunday at the clubhouse.

## SAVE THE DATE

AGM, ANNUAL PRESENTATIONS and Gourmet meal will be held at the clubhouse on **Sunday 7th July**, from 12 noon, main meal will be served around 1.30'ish



Phil, the cowboy, even got a nice cod and did a classic release of an oversize fish as well



Tylar Herard with a nice cod



Anglers members hard at work feeding the garage sale participants





What Great weather for golf, the course has enjoyed the rain and is looking a picture, the hard work of David Briggs and his band of volunteers is a credit to them.



**More volunteer work on the revamped tees, re-done, enlarged and ready to go.**

The club is currently sinking an exploratory bore in the search for water and with the extended water lines will be able maintain tees and greens through the driest of years.

Also a professional synthetic greens contractor has been engaged to asses and fix issues with the synthetic carpet stretching/shrinking on the 2nd, 5th and 6th greens, the other greens are having remedial work done as well.



**No more wrinkles on the second, Dave, Ken and synthetic green contractor hard at work.**

- ◆ Vets golf continues every Wednesday with tee off at 9.00am sharp.
- ◆ 2nd June 3rd Round of club championships and monthly medal tee off 11.30 to 12
- ◆ 9th June Queens birthday stableford
- ◆ 16th June stableford and round 1 of Col Rainbow match play
- ◆ 23rd June stableford
- ◆ 30th June stableford
- ◆ All Tee Off Times 11.30 TO 12 noon

## Results

Easter Comp.

Winner Bob Sheerans 37, r/up G. Schilg 36 ball comp Craig McMillan 35, Stu Millar 31

5.5.19 Monthly Medal and second round club championships.

Winner S. McMillan 69, r/up B. Polkinghorn 71c/b, balls B. Sheerans 71, A. Melbourne 73, A. Decker 74, C. McMillan 75, P. Kilo 75, NTP S. Millar 16thH, B. Sheerans 7th

12/5 Mothers Day Stableford 33 c/b r/up D. Briggs 33, balls G. Schilg 31. B. Sheerans 31, C. McMillan 30 NTP D. Briggs 3rd

Wendy Wright Memorial Day 2 ball Ambrose.

Winners G. Schilg and A. Melbourne 72, Mens handicap winners B. Sheerans and F. Carmody 65.25, Mixed handicap winners J. & D, Gray 68, best net score and Wendy Wright Shield winners G. Schilg and A. Melbourne 61.75 balls D. Klein and A. Decker 66.5, D. Briggs and B. Polkinghorn 66.75, B. Wright and N. Wayneberg 69.75, R. & C McMillan 70.5. NTP 3RD J. Gray, 9th J. Fuaux, 16th A. Melbourne

28/4 stableford. Winner D. Klein 37, r/up A. Melbourne 35, balls C. McMillan 34, D. Briggs 32, G. Preston 32 NTP B. Sheerans 7th, C. McMillan 9th and P. Kilo 7<sup>th</sup>

Ladies:

Jindera Ladies have represented the club in the MDGA Pennant competition with mixed results, the ladies look great in their new outfits. However it's a pity about the result going down 4-1 to Henty.



**Social golfers enjoying the Jindera Golf course**

***Happy Hitting and remember  
the course is always open for social golf.***





Jindera TerryWhite Chemmart Pharmacy

Shop 4&5, 82 Urana Street, Jindera, NSW 2642

OPEN

Monday-Friday: 9.00am to 5.30pm

Saturday: 9.00am to 12 noon

**-- OFFERING --**

- ♦ Health Risk Screening Services
- ♦ National Diabetes Services Scheme
- ♦ Webstar packing
- ♦ Spotcheck (Skin Cancer Screening Programme)
- ♦ Wide range of vitamins
- ♦ MedsCheck
- ♦ Free Blood Pressure Testing
- ♦ Baby Products
- ♦ Home Health Care Aids
- ♦ Giftware
- ♦ Natio Ski Care range
- ♦ Chemmarts Reward Programme

Phone (02) 6026 3271

Fax: (02) 6026 3935

Email: [jindera@chemmartpharmacy.com.au](mailto:jindera@chemmartpharmacy.com.au)



**TerryWhite Chemmart.**



**INDEPENDENT  
TAXATION  
SPECIALIST**

**RAYTHER & CO**

**CHARTERED ACCOUNTANTS  
REGISTERED TAXATION AGENTS**

**6056 3520**

*Phone today to arrange your appointment.*

*Late appointments and Saturday's  
by request.*

*SPECIALISING IN:*

- Individuals
- Rental Properties
- Primary Producers
- Small to Medium Businesses

9/175 Lawrence St, Wodonga.

(opp. new TAFE SPACE Building in Lawrence Street

[raytherwodonga@westnet.com.au](mailto:raytherwodonga@westnet.com.au)



**JINDERA NEWS – CONTACT US ON: [jinderanews@ruralcarelink.org.au](mailto:jinderanews@ruralcarelink.org.au)**

**Jindera Golf Club Ladies pennant team looking great in new club outfits**



The ladies are at rear Sandra Kilo, Virginia Ebert, front Heather Chaston, Ros McMillan and Judy Gehrig



# Jindera | **plus LIQUOR**

## Your Local IGA

- \* Fantastic Promotions
- \* No Queues
- \* Great Deli and Fruit and Veg Range
- \* Quality Meat- using local product and local butchers
- \* A Real Focus on **Locally Grown** Products
- \* Free Home Delivery & Order Picking Service
- \* Good Range-and getting better- you want it- we'll get it
- \* Competitive Nappy & Beer Prices
- \* Seniors Discount 8% every Tuesday.
- \* Opening Hours: Mon-Fri 7.30-7.00, Sat: 8.30-7.00, Sun: 9.00-6.30

Cnr Creek & Urana Street, Phone: 60263911



*Local Heroes*



## JINDERA COMMUNITY DIRECTORY

Anglers Club .....	6026 3426	Morgan Country Car Club.....	0448 004 706
Friends in Action .....	6026 2442	Multi Purpose Stadium Committee.....	0411 282 320
Childrens Services .....	6026 3877	Netball Club.....	6026 2013
Community Forum .....	6026 3544	Pony Club .....	6026 3484
Conway Printing.....	6026 3611	Pre School.....	6026 3468
CWA.....	6026 3318	Recreation Reserve.....	6026 3417
Football Club.....	0409 263 658	Red Cross .....	
Friends of Jindera Wet Lands .....	0407 180 730	Rural Care Link .....	6026 3001
Golf Club .....	6026 3426	St Johns Lutheran School .....	6026 3220
Jindera Lutheran Church .....	6026 3417	St Mary MacKillop College .....	6045 9422
Jindera Pioneer Museum.....	6026 3622	St Paul's Anglican Church .....	6040 6457
Jindera Public School.....	6026 3280	Swimming Pool .....	6026 3900
Jindera Post office.....	6026 3201	Tennis Club.....	6026 3122



in Greater Hume Shire

## BUY LOCAL

**BUYING LOCAL MEANS LOCAL JOBS.**  
and keeps our town alive.

**BE LOCAL— THINK LOCAL—BUY LOCAL.**