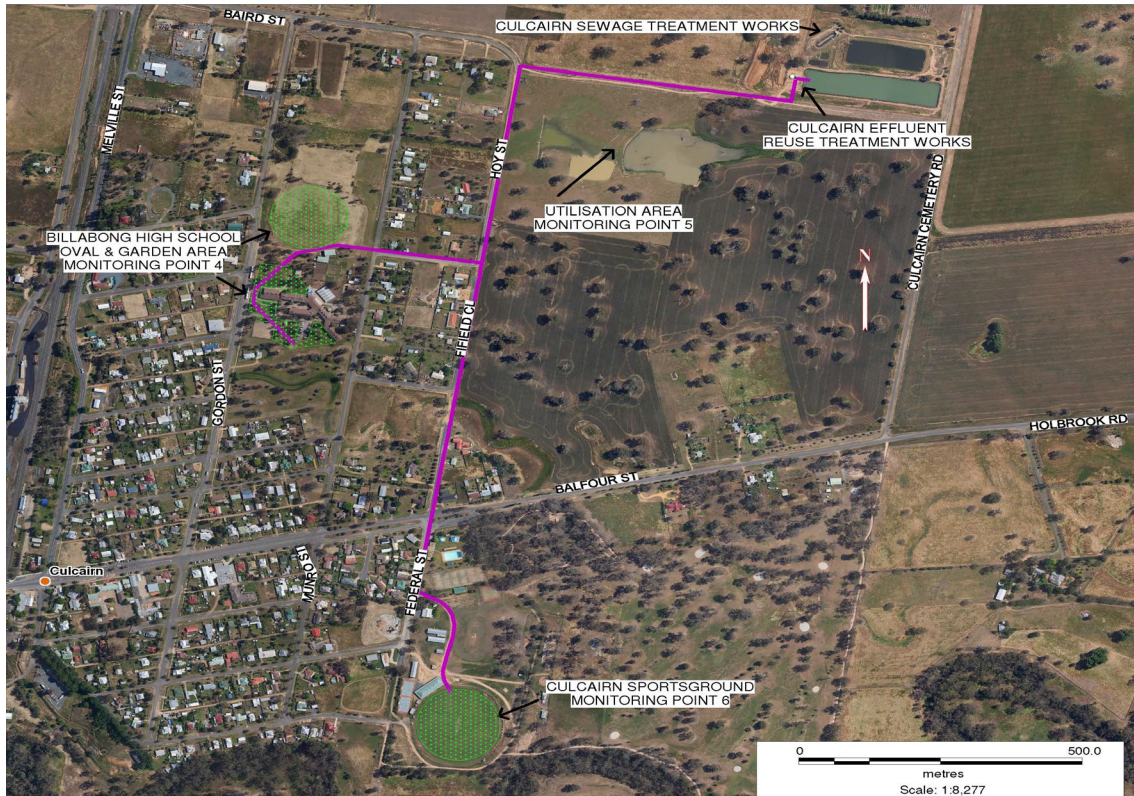


**POLLUTION MONITORING DATA
CULCAIRN EFFLUENT REUSE AREAS**



Environment Protection Licence No.: 3727

Link to full licence on EPA website:

<http://www.environment.nsw.gov.au/prpoeoapp/ViewPOEOLicence.aspx?DOCID=31793&SYSUID=1&LICID=3727>

Licensee: Greater Hume Shire Council, PO Box 99 Holbrook NSW 2644

Address of facility: Cemetery Road, Culcairn NSW 2660

Monitoring Point 4

Location: Culcairn Sportsground effluent reuse area

Published: 31 July 2013

Obtained: 31 May 2013

Sampled: 13 May 2013

| Pollutant | Unit | Frequency | Sampling Method | Measurement | Comments |
|--------------------|-------------------------|-----------|------------------|-------------|----------|
| Conductivity | deciSiemens per metre | Yearly | Composite sample | 0.2 | |
| Nitrogen (total) | milligrams per kilogram | Yearly | Composite sample | 1430 | |
| Phosphorus (total) | milligrams per kilogram | Yearly | Composite sample | 254 | |
| Sodium Adsorption | sodium adsorption ratio | Yearly | Composite sample | 12 | |

Monitoring Point 5

Location: Culcairn effluent reuse area (Utilisation area)

Published: 31 July 2013

Obtained: 31 May 2013

Sampled: 13 May 2013

| Pollutant | Unit | Frequency | Sampling Method | Measurement | Comments |
|--------------------|-------------------------|-----------|------------------|-------------|----------|
| Conductivity | deciSiemens per metre | Yearly | Composite sample | 0.16 | |
| Nitrogen (total) | milligrams per kilogram | Yearly | Composite sample | 1320 | |
| Phosphorus (total) | milligrams per kilogram | Yearly | Composite sample | 224 | |
| Sodium Adsorption | sodium adsorption ratio | Yearly | Composite sample | 4 | |

Monitoring Point 6

Location: Culcairn Billabong high School, oval and garden area

Published: 31 July 2013

Obtained: 31 May 2013

Sampled: 13 May 2013

| Pollutant | Unit | Frequency | Sampling Method | Measurement | Comments |
|--------------------|-------------------------|-----------|------------------|-------------|----------|
| Conductivity | deciSiemens per metre | Yearly | Composite sample | 0.23 | |
| Nitrogen (total) | milligrams per kilogram | Yearly | Composite sample | 2220 | |
| Phosphorus (total) | milligrams per kilogram | Yearly | Composite sample | 332 | |
| Sodium Adsorption | sodium adsorption ratio | Yearly | Composite sample | 11 | |