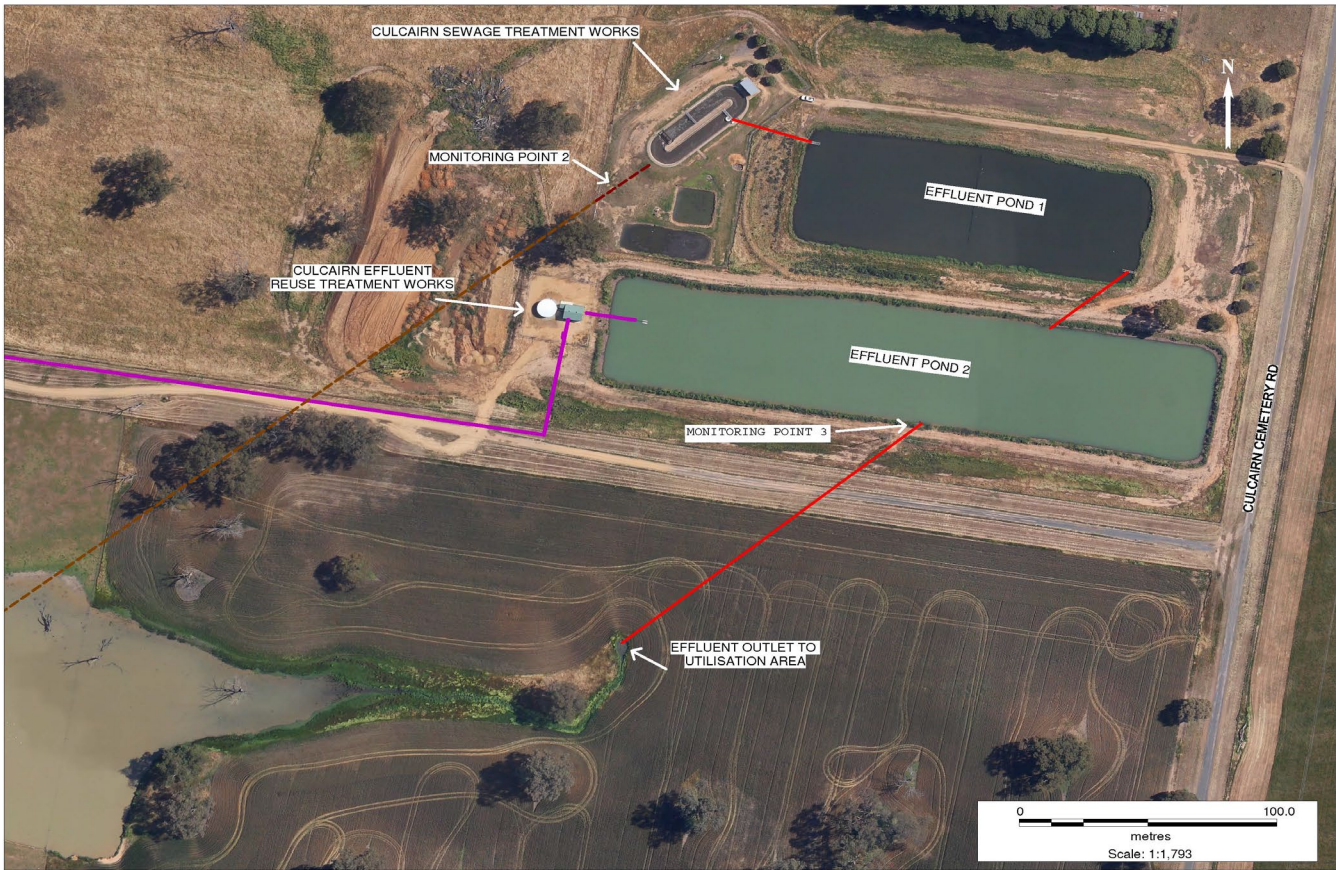


**POLLUTION MONITORING DATA
CULCAIRN SEWAGE TREATMENT WORKS**



Environment Protection Licence No.: 3727

Link to full licence on EPA website:

<http://www.environment.nsw.gov.au/prpoeoapp/ViewPOEOLicence.aspx?DOCID=31793&SYSUID=1&LICID=3727>

Licensee: Greater Hume Shire Council, PO Box 99 Holbrook NSW 2644

Address of facility: Cemetery Road, Culcairn NSW 2660

Monitoring Point 2

Location: Flow meter at the inlet to Sewage Treatment Plant

Published: 31 July 2013

Obtained: 28 Feb 2013

Sampled: From 1 July 2012 to 28 Feb 2013

| Item | Unit | Frequency | Lowest result | Mean result | Max result | Volume limit | Exceedence (yes/no) | Comments |
|------------|--------|-----------|---------------|-------------|------------|--------------|---------------------|-------------------|
| Daily flow | kl/day | Daily | 151 | 239 | 760 | 550 | no | Wet weather event |

Monitoring Point 3

Location: Sampling point prior to discharge from effluent pond 2

Published: 31 July 2013

Obtained: 28 Feb 2013

Sampled: 14 Feb 2013

| Pollutant | Unit | Frequency | Measurement | 100 percentile limit | Exceedence (yes/no) | Comments |
|---------------------------|-----------|-----------|-------------|----------------------|---------------------|----------|
| Biochemical oxygen demand | mg/l | Quarterly | <5 | 20 | no | |
| Chlorophyll-a | ug/L | Quarterly | 25 | | | |
| Conductivity | ms/cm | Quarterly | 1100 | | | |
| Faecal Coliforms | cfu/100ml | Quarterly | 140 | | no | |
| Nitrogen (total) | mg/l | Quarterly | 2.5 | 20 | no | |
| Oil and Grease | mg/l | Quarterly | <2 | 10 | no | |
| pH | | Quarterly | 9.2 | | | |
| Phosphorus (total) | mg/l | Quarterly | 5.1 | 10 | no | |
| Total suspended solids | mg/l | Quarterly | 16 | 30 | no | |