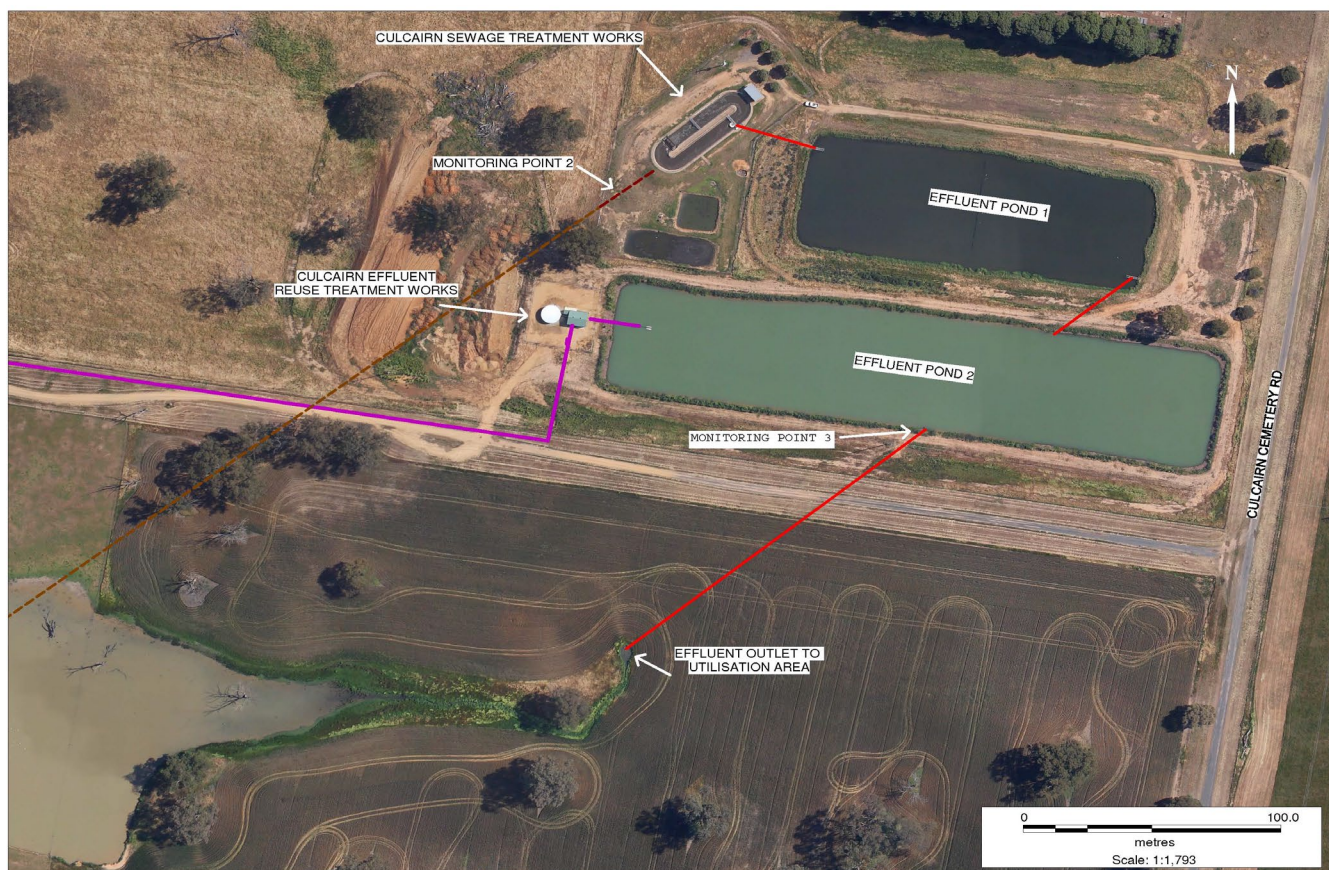


**POLLUTION MONITORING DATA  
CULCAIRN SEWAGE TREATMENT WORKS**



**Environment Protection Licence No.:** 3727

Link to full licence on EPA website:

<http://www.environment.nsw.gov.au/prpoeoapp/ViewPOEOLicence.aspx?DOCID=31793&SYSUID=1&LICID=3727>

**Licensee:** Greater Hume Shire Council, PO Box 99 Holbrook NSW 2644

**Address of facility:** Cemetery Road, Culcairn NSW 2660

**Monitoring Point 2**

**Location:** Flow meter at the inlet to Sewage Treatment Plant

**Published:** 31 July 2013

**Obtained:** 30 Nov 2012

**Sampled:** From 1 July 2012 to 30 Nov 2012

| Item       | Unit   | Frequency | Lowest result | Mean result | Max result | Volume limit | Exceedence (yes/no) | Comments |
|------------|--------|-----------|---------------|-------------|------------|--------------|---------------------|----------|
| Daily flow | kl/day | Daily     | 151           | 239         | 533        | 550          | no                  |          |

**Monitoring Point 3**

**Location:** Sampling point prior to discharge from effluent pond 2

**Published:** 31 July 2013

**Obtained:** 30 Nov 2012

**Sampled:** 21 Nov 2012

| Pollutant                 | Unit      | Frequency | Measurement | 100 percentile limit | Exceedence (yes/no) | Comments |
|---------------------------|-----------|-----------|-------------|----------------------|---------------------|----------|
| Biochemical oxygen demand | mg/l      | Quarterly | 7           | 20                   | no                  |          |
| Chlorophyll-a             | ug/L      | Quarterly | 10          |                      |                     |          |
| Conductivity              | ms/cm     | Quarterly | 880         |                      |                     |          |
| Faecal Coliforms          | cfu/100ml | Quarterly | 19          |                      | no                  |          |
| Nitrogen (total)          | mg/l      | Quarterly | 6.3         | 20                   | no                  |          |
| Oil and Grease            | mg/l      | Quarterly | <2          | 10                   | no                  |          |
| pH                        |           | Quarterly | 8.7         |                      |                     |          |
| Phosphorus (total)        | mg/l      | Quarterly | 5.1         | 10                   | no                  |          |
| Total suspended solids    | mg/l      | Quarterly | 12          | 30                   | no                  |          |