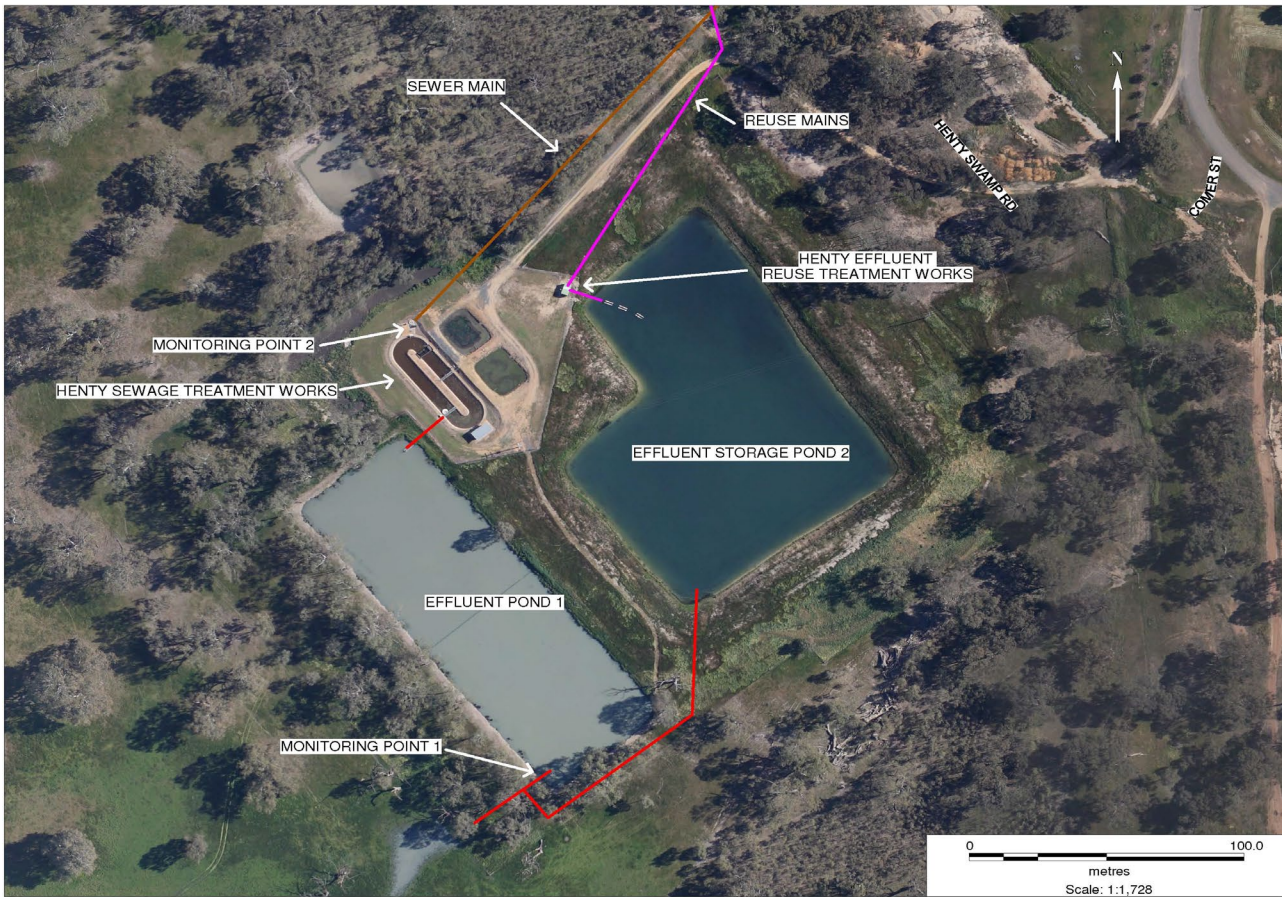


**POLLUTION MONITORING DATA
HENTY SEWAGE TREATMENT WORKS**



Environment Protection Licence No.: 3726

Link to full licence on EPA website:

<http://www.environment.nsw.gov.au/prpoeoapp/ViewPOEOLicence.aspx?DOCID=31290&SYSUID=1&LICID=3726>

Licensee: Greater Hume Shire Council, PO Box 99 Holbrook NSW 2644

Address of facility: Comer Street, Henty NSW 2658

Monitoring Point 1

Location: Sampling point prior to discharge from effluent pond 1

Published: 31 July 2013

Obtained: 28 Feb 2013

Sampled: 14 Feb 2013

Pollutant	Unit	Frequency	Measurement	100 percentile limit	Exceedence (yes/no)	Comments
Biochemical oxygen demand	mg/l	Quarterly	7	20	no	
Chlorophyll-a	ug/L	Quarterly	24			
Conductivity	ms/cm	Quarterly	840			
Faecal Coliforms	cfu/100ml	Quarterly	330		no	
Nitrogen (total)	mg/l	Quarterly	2.8	20	no	
Oil and Grease	mg/l	Quarterly	<2	10	no	
pH		Quarterly	8.2			
Phosphorus (total)	mg/l	Quarterly	8.1	10	no	
Total suspended solids	mg/l	Quarterly	26	30	no	

Monitoring Point 2

Location: Flow meter at the inlet to Sewage Treatment Plant

Published: 31 July 2013

Obtained: 28 Feb 2013

Sampled: From 1 July 2012 to 28 Feb 2013

Item	Unit	Frequency	Lowest result	Mean result	Max result	Volume limit	Exceedence (yes/no)	Comments
Daily flow	kl/day	Daily	134	164	308	250	No	Wet weather event