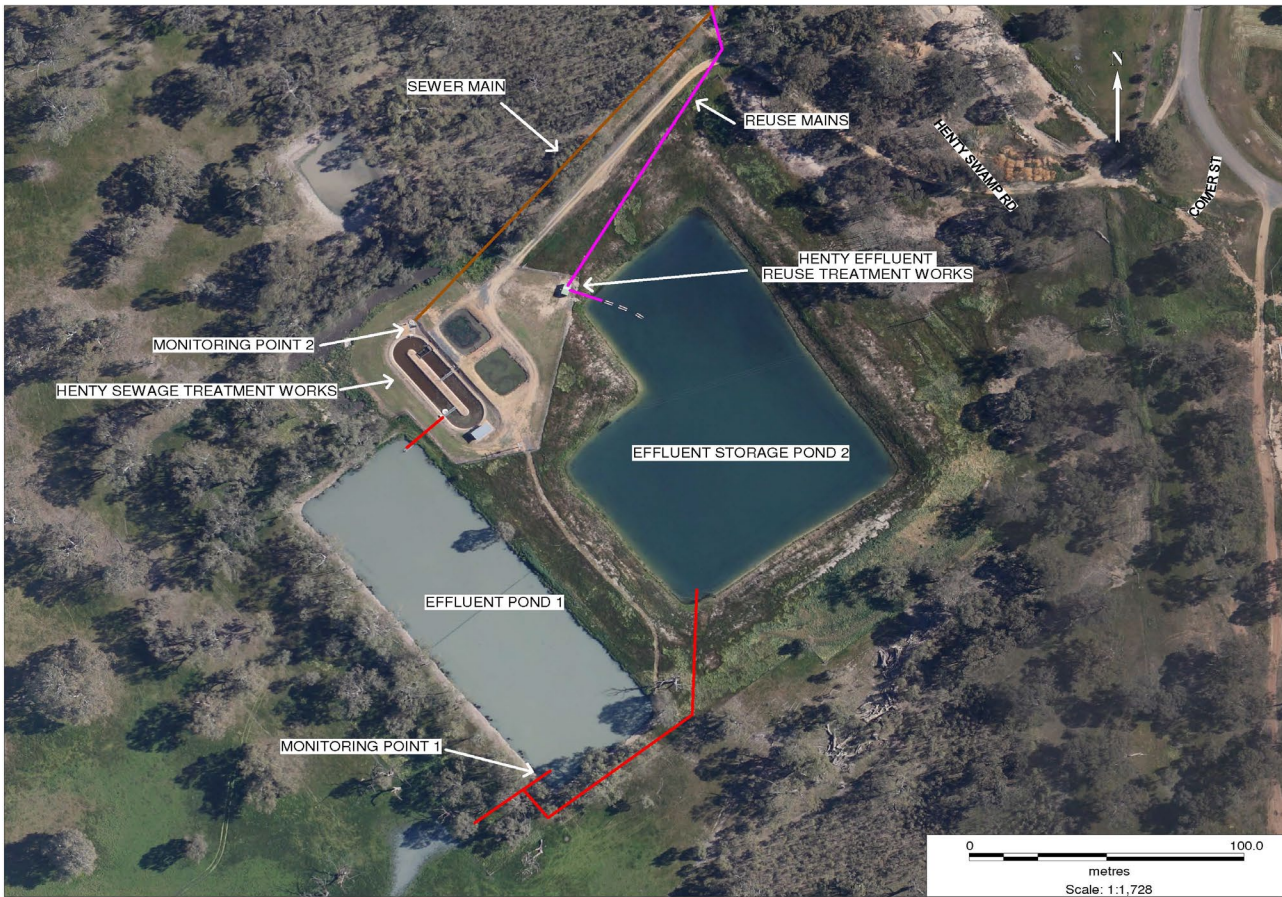


**POLLUTION MONITORING DATA  
HENTY SEWAGE TREATMENT WORKS**



**Environment Protection Licence No.:** 3726

Link to full licence on EPA website:

<http://www.environment.nsw.gov.au/prpoeoapp/ViewPOEOLicence.aspx?DOCID=31290&SYSUID=1&LICID=3726>

**Licensee:** Greater Hume Shire Council, PO Box 99 Holbrook NSW 2644

**Address of facility:** Comer Street, Henty NSW 2658

**Monitoring Point 1**

**Location:** Sampling point prior to discharge from effluent pond 1

**Published:** 12 Sept 2012

**Obtained:** 31 Aug 2012

**Sampled:** 15 Aug 2012

Pollutant	Unit	Frequency	Measurement	100 percentile limit	Exceedence (yes/no)	Comments
Biochemical oxygen demand	mg/l	Quarterly	<5	20	no	
Chlorophyll-a	ug/L	Quarterly	<5			
Conductivity	ms/cm	Quarterly	680			
Faecal Coliforms	cfu/100ml	Quarterly	12		no	
Nitrogen (total)	mg/l	Quarterly	5.6	20	no	
Oil and Grease	mg/l	Quarterly	<2	10	no	
pH		Quarterly	7.8			
Phosphorus (total)	mg/l	Quarterly	7.1	10	no	
Total suspended solids	mg/l	Quarterly	3	30	no	

**Monitoring Point 2**

**Location:** Flow meter at the inlet to Sewage Treatment Plant

**Published:** 12 Sept 2012

**Obtained:** 31 Aug 2012

**Sampled:** From 1 July 2012 to 31 Aug 2012

Item	Unit	Frequency	Lowest result	Mean result	Max result	Volume limit	Exceedence (yes/no)	Comments
Daily flow	kl/day	Daily	158	182	466	250	Under review	Wet weather event