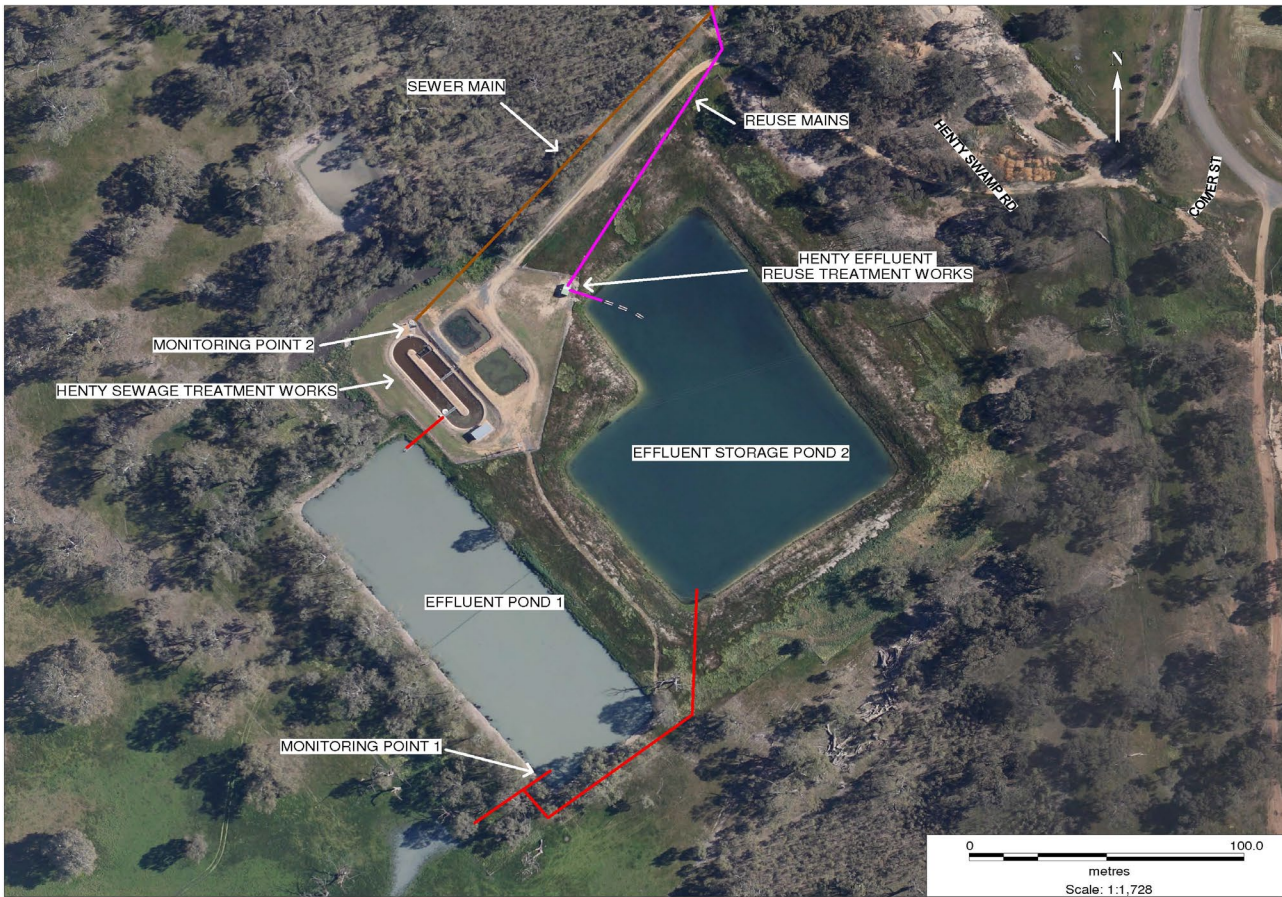


**POLLUTION MONITORING DATA
HENTY SEWAGE TREATMENT WORKS**



Environment Protection Licence No.: 3726

Link to full licence on EPA website:

<http://www.environment.nsw.gov.au/prpoeoapp/ViewPOEOLicence.aspx?DOCID=31290&SYSUID=1&LICID=3726>

Licensee: Greater Hume Shire Council, PO Box 99 Holbrook NSW 2644

Address of facility: Comer Street, Henty NSW 2658

Monitoring Point 1

Location: Sampling point prior to discharge from effluent pond 1

Published: 22 June 2012

Obtained: 1 June 2012

Sampled: 16 May 2012

| Pollutant | Unit | Frequency | Measurement | 100 percentile limit | Exceedence (yes/no) | Comments |
|---------------------------|-----------|-----------|-------------|----------------------|---------------------|----------|
| Biochemical oxygen demand | mg/l | Quarterly | 7 | 20 | no | |
| Chlorophyll-a | ug/L | Quarterly | 1.4 | | | |
| Conductivity | ms/cm | Quarterly | 680 | | | |
| Faecal Coliforms | cfu/100ml | Quarterly | 58 | | no | |
| Nitrogen (total) | mg/l | Quarterly | 4.1 | 20 | no | |
| Oil and Grease | mg/l | Quarterly | <2 | 10 | no | |
| pH | | Quarterly | 7.8 | | | |
| Phosphorus (total) | mg/l | Quarterly | 7.3 | 10 | no | |
| Total suspended solids | mg/l | Quarterly | 4 | 30 | no | |

Monitoring Point 2

Location: Flow meter at the inlet to Sewage Treatment Plant

Published: 22 June 2012

Obtained: 28 May 2012

Sampled: From 1 July 2011 to 31 May 2012

| Item | Unit | Frequency | Lowest result | Mean result | Max result | Volume limit | Exceedence (yes/no) | Comments |
|------------|--------|-----------|---------------|-------------|------------|--------------|---------------------|-------------------|
| Daily flow | kl/day | Daily | 110 | 173 | 1233 | 250 | Under review | Wet weather event |