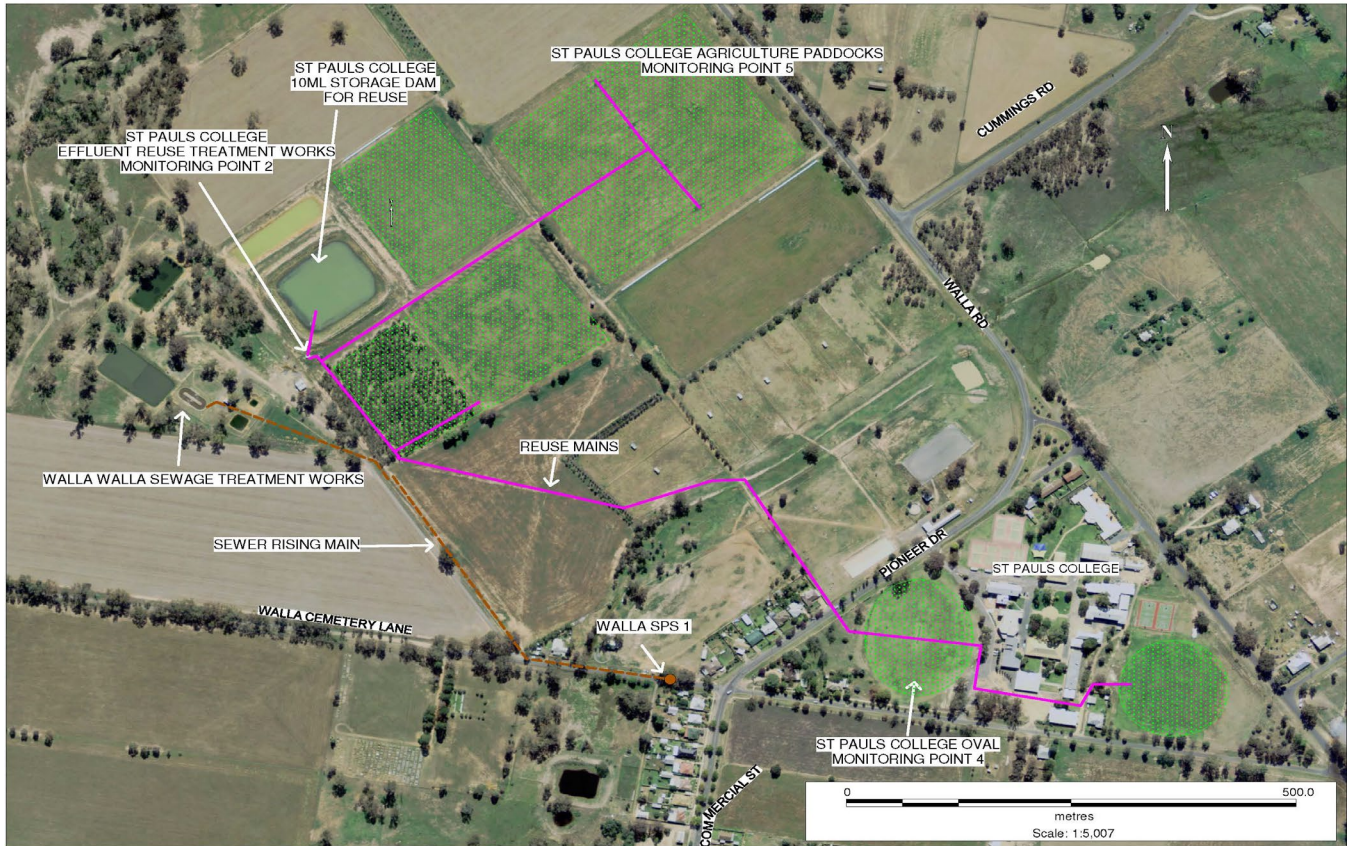


**POLLUTION MONITORING DATA
WALLA WALLA EFFLUENT REUSE AREAS**



Environment Protection Licence No.: 2563

Link to full licence on EPA website:

<http://www.environment.nsw.gov.au/prpoeoapp/ViewPOEOLicence.aspx?DOCID=31794&SYSUID=1&LICID=2563>

Licensee: Greater Hume Shire Council, PO Box 99 Holbrook NSW 2644

Address of facility: Klemke Avenue, Walla Walla NSW 2659

Monitoring Point 2

Location: Pump station discharge flow meter to effluent reuse area

Published: 31 July 2013

Obtained: 30 June 2013

Sampled: From 1 July 2012 to 30 June 2013

Item	Unit	Frequency	Lowest result	Mean result	Max result	Volume limit	Exceedence (yes/no)
Daily flow	kl/day	Daily	0	13	216	N/A	N/A

Monitoring Point 4

Location: St Paul's College Oval effluent reuse area

Published: 31 July 2013

Obtained: 31 May 2013

Sampled: 13 May 2013

Pollutant	Unit	Frequency	Sampling Method	Measurement	Comments
Conductivity	deciSiemens per metre	Yearly	Composite sample	0.14	
Nitrogen (total)	milligrams per kilogram	Yearly	Composite sample	1064	
Phosphorus (total)	milligrams per kilogram	Yearly	Composite sample	358	
Sodium Adsorption	sodium adsorption ratio	Yearly	Composite sample	7	

Monitoring Point 5

Location: St Paul's College Agricultural paddocks effluent reuse area

Published: 31 July 2013

Obtained: 31 May 2013

Sampled: 13 May 2013

Pollutant	Unit	Frequency	Sampling Method	Measurement	Comments
Conductivity	deciSiemens per metre	Yearly	Composite sample	0.13	
Nitrogen (total)	milligrams per kilogram	Yearly	Composite sample	1800	
Phosphorus (total)	milligrams per kilogram	Yearly	Composite sample	269	
Sodium Adsorption	sodium adsorption ratio	Yearly	Composite sample	<1	