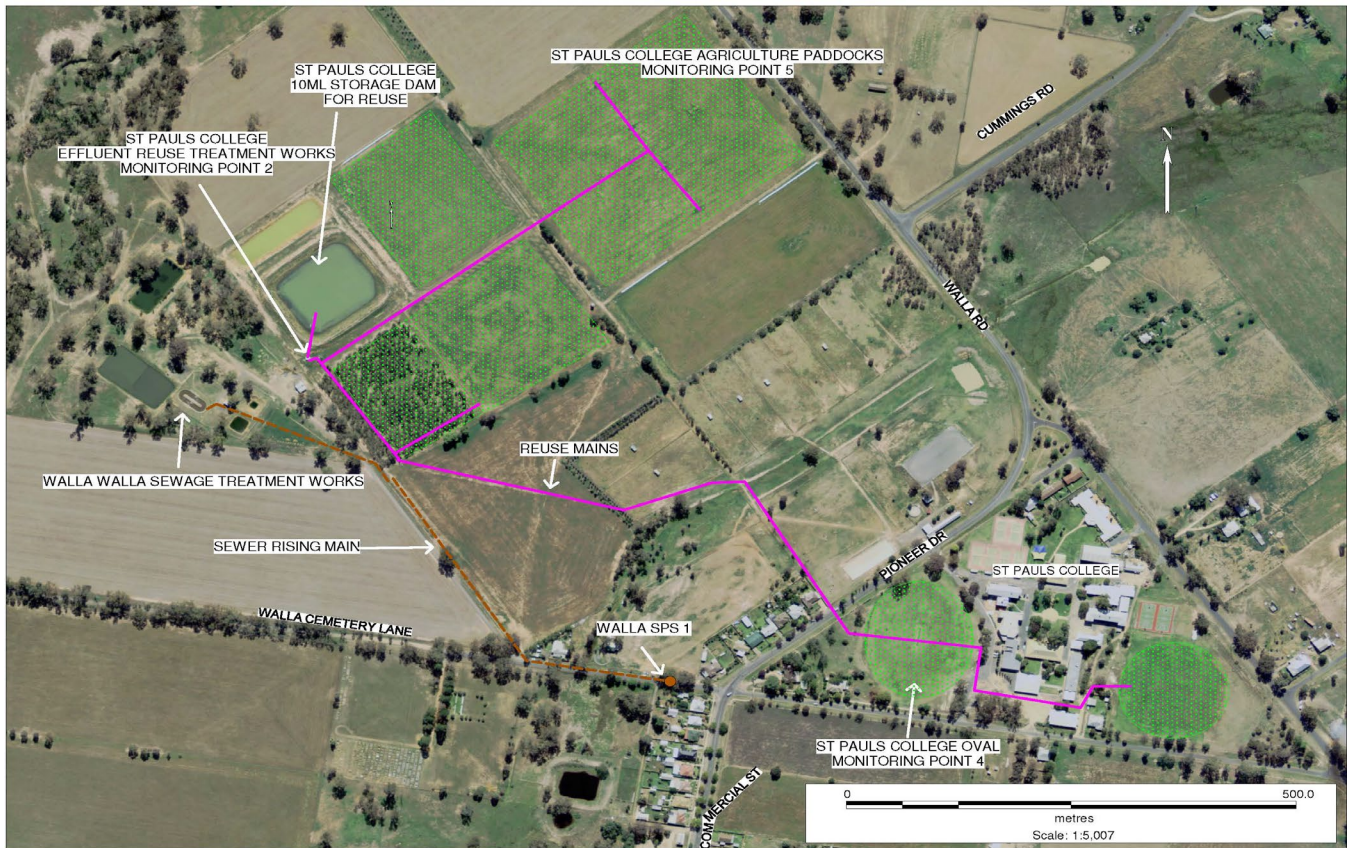


**POLLUTION MONITORING DATA
WALLA WALLA EFFLUENT REUSE AREAS**



Environment Protection Licence No.: 2563

Link to full licence on EPA website:

<http://www.environment.nsw.gov.au/prpoeoapp/ViewPOELicence.aspx?DOCID=31794&SYSUID=1&LICID=2563>

Licensee: Greater Hume Shire Council, PO Box 99 Holbrook NSW 2644

Address of facility: Klemke Avenue, Walla Walla NSW 2659

Monitoring Point 2

Location: Pump station discharge flow meter to effluent reuse area

Published: 22 June 2012

Obtained: 4 June 2012

Sampled: From 1 July 2011 to 31 May 2012

Item	Unit	Frequency	Lowest result	Mean result	Max result	Volume limit	Exceedence (yes/no)
Daily flow	kl/day	Daily	0	7	216	N/A	N/A

Monitoring Point 4

Location: St Paul's College Oval effluent reuse area

Published: 22 June 2012

Obtained: 4 June 2012

Sampled: 2 May 2012

Pollutant	Unit	Frequency	Sampling Method	Measurement	Comments
Conductivity	deciSiemens per metre	Yearly	Composite sample	0.167	
Nitrogen (total)	milligrams per kilogram	Yearly	Composite sample	2020	
Phosphorus (total)	milligrams per kilogram	Yearly	Composite sample	226	
Sodium Adsorption	sodium adsorption ratio	Yearly	Composite sample	2.8	

Monitoring Point 5

Location: St Paul's College Agricultural paddocks effluent reuse area

Published: 22 June 2012

Obtained: 4 June 2012

Sampled: 2 May 2012

Pollutant	Unit	Frequency	Sampling Method	Measurement	Comments
Conductivity	deciSiemens per metre	Yearly	Composite sample	0.161	
Nitrogen (total)	milligrams per kilogram	Yearly	Composite sample	1890	
Phosphorus (total)	milligrams per kilogram	Yearly	Composite sample	397	
Sodium Adsorption	sodium adsorption ratio	Yearly	Composite sample	6.2	