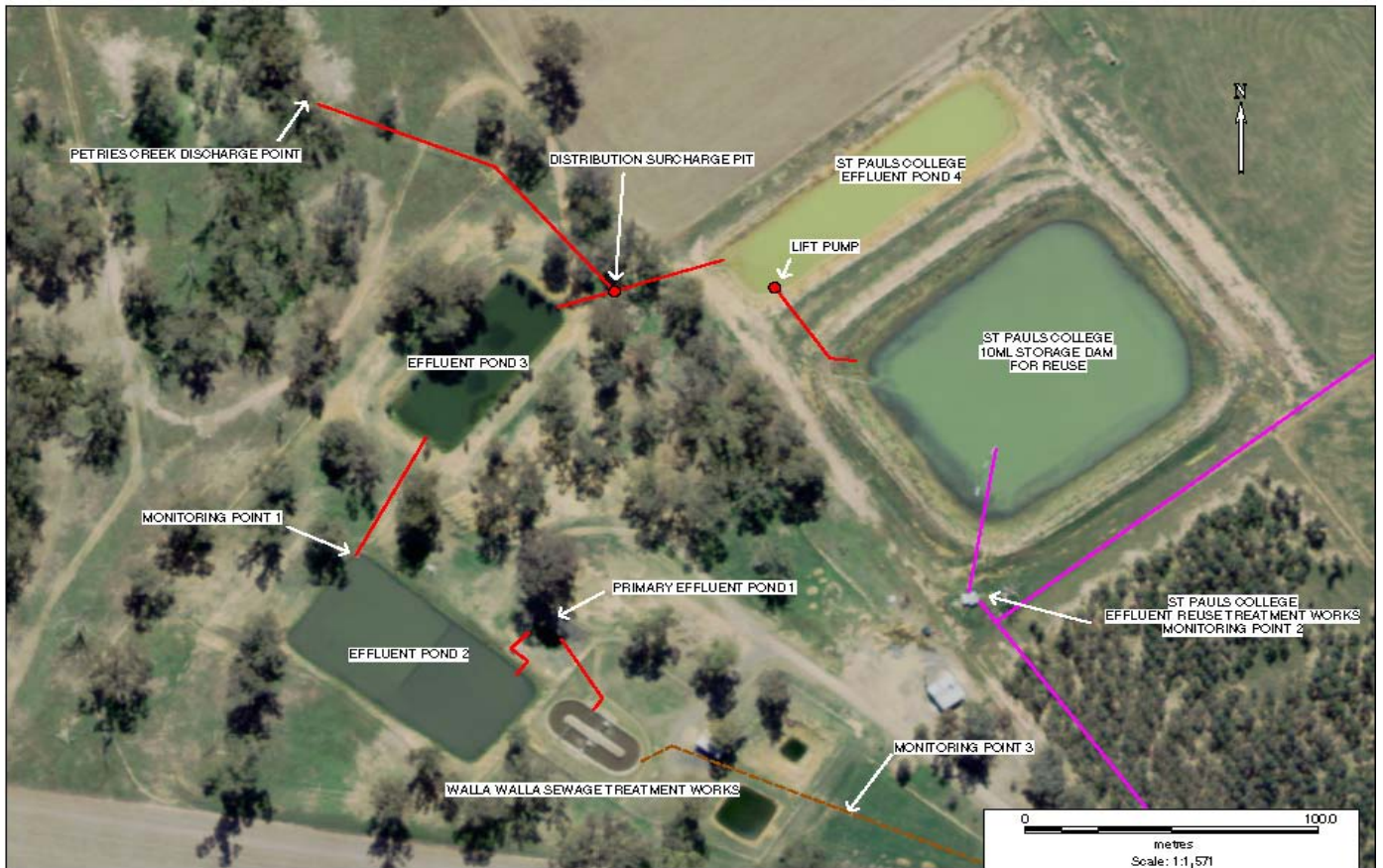


**POLLUTION MONITORING DATA
WALLA WALLA SEWAGE TREATMENT WORKS**



Environment Protection Licence No.: 2563

Link to full licence on EPA website:

<http://www.epa.nsw.gov.au/prpoeoapp/ViewPOEOLicence.aspx?DOCID=33961&SYSUID=1&LICID=2563>

Licensee: Greater Hume Shire Council, PO Box 99 Holbrook NSW 2644

Address of facility: Klemke Avenue, Walla Walla NSW 2659

Monitoring Point 1

Location: Sampling point prior to discharge from effluent pond 2

Published: 10 July 2014

Obtained: 23 Aug 2013

Sampled: 14 Aug 2013

Pollutant	Unit	Frequency	Measurement	100 percentile limit	Exceedence (yes/no)	Comments
Biochemical oxygen demand	mg/l	Quarterly	5	20	no	
Chlorophyll-a	ug/L	Quarterly	5			
Conductivity	ms/cm	Quarterly	670			
Faecal Coliforms	cfu/100ml	Quarterly	10			
Nitrogen (total)	mg/l	Quarterly	3.8	20	no	
Oil and Grease	mg/l	Quarterly	<2	10	no	
pH		Quarterly	8.2			
Phosphorus (total)	mg/l	Quarterly	3.9	10	no	
Total suspended solids	mg/l	Quarterly	3	30	no	