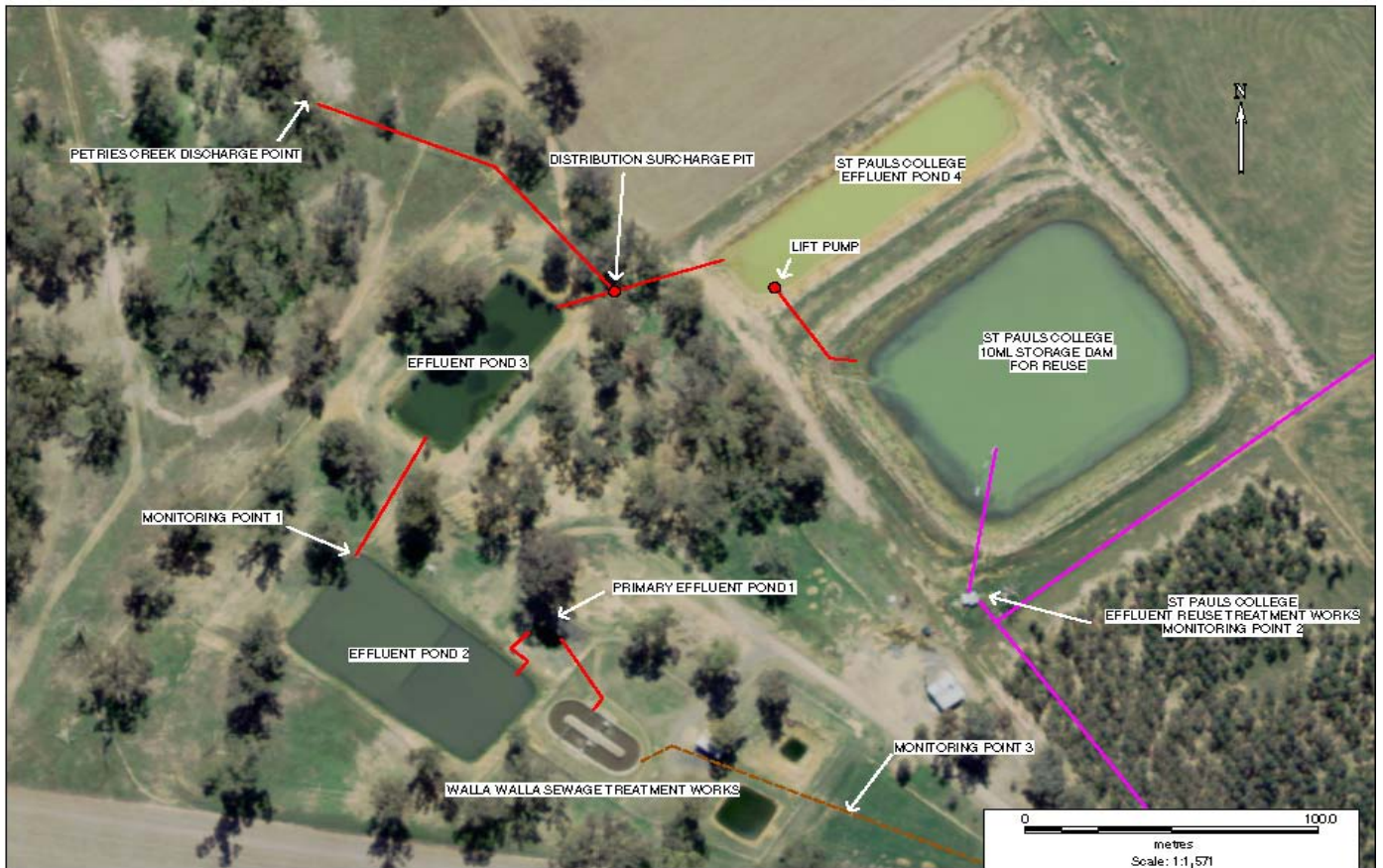


**POLLUTION MONITORING DATA
WALLA WALLA SEWAGE TREATMENT WORKS**



Environment Protection Licence No.: 2563

Link to full licence on EPA website:

<http://www.epa.nsw.gov.au/prpoeoapp/ViewPOEOLlicence.aspx?DOCID=33961&SYSUID=1&LICID=2563>

Licensee: Greater Hume Shire Council, PO Box 99 Holbrook NSW 2644

Address of facility: Klemke Avenue, Walla Walla NSW 2659

Monitoring Point 1

Location: Sampling point prior to discharge from effluent pond 2

Published: 10 July 2014

Obtained: 21 May 2014

Sampled: 14 May 2014

| Pollutant | Unit | Frequency | Measurement | 100 percentile limit | Exceedence (yes/no) | Comments |
|---------------------------|-----------|-----------|-------------|----------------------|---------------------|----------|
| Biochemical oxygen demand | mg/l | Quarterly | 5 | 20 | no | |
| Chlorophyll-a | ug/L | Quarterly | 8 | | | |
| Conductivity | ms/cm | Quarterly | 740 | | | |
| Faecal Coliforms | cfu/100ml | Quarterly | 1100 | | | |
| Nitrogen (total) | mg/l | Quarterly | 3 | 20 | no | |
| Oil and Grease | mg/l | Quarterly | <2 | 10 | no | |
| pH | | Quarterly | 7.8 | | | |
| Phosphorus (total) | mg/l | Quarterly | 5.2 | 10 | no | |
| Total suspended solids | mg/l | Quarterly | 12 | 30 | no | |