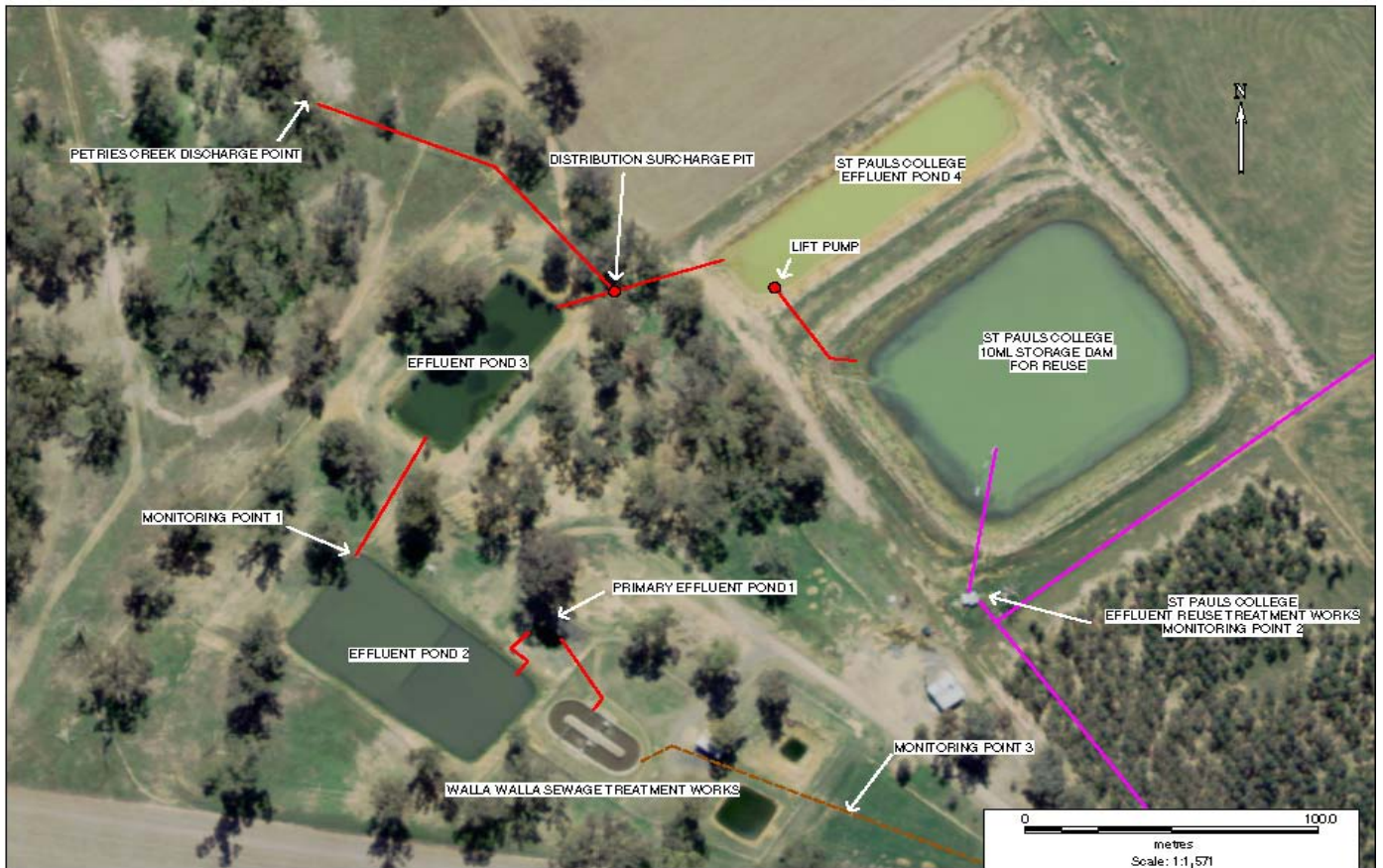


**POLLUTION MONITORING DATA
WALLA WALLA SEWAGE TREATMENT WORKS**



Environment Protection Licence No.: 2563

Link to full licence on EPA website:

<http://www.environment.nsw.gov.au/prpoeoapp/ViewPOEOlicence.aspx?DOCID=31794&SYSUID=1&LICID=2563>

Licensee: Greater Hume Shire Council, PO Box 99 Holbrook NSW 2644

Address of facility: Klemke Avenue, Walla Walla NSW 2659

Monitoring Point 1

Location: Sampling point prior to discharge from effluent pond 2

Published: 31 July 2013

Obtained: 30 Nov 2012

Sampled: 21 Nov 2012

Pollutant	Unit	Frequency	Measurement	100 percentile limit	Exceedence (yes/no)	Comments
Biochemical oxygen demand	mg/l	Quarterly	<5	20	no	
Chlorophyll-a	ug/L	Quarterly	25			
Conductivity	ms/cm	Quarterly	540			
Faecal Coliforms	cfu/100ml	Quarterly	22			
Nitrogen (total)	mg/l	Quarterly	8.4	20	no	
Oil and Grease	mg/l	Quarterly	<2	10	no	
pH		Quarterly	9.1			
Phosphorus (total)	mg/l	Quarterly	3.7	10	no	
Total suspended solids	mg/l	Quarterly	7	30	no	

Monitoring Point 3

Location: Flow meter at the inlet to Sewage Treatment Plant

Published: 31 July 2013

Obtained: 30 Nov 2012

Sampled: From 1 July 2012 to 30 Nov 2012

Item	Unit	Frequency	Lowest result	Mean result	Max result	Volume limit	Exceedence (yes/no)	Comments
Daily flow	kl/day	Daily	97	131	1464	500	no	Wet weather event