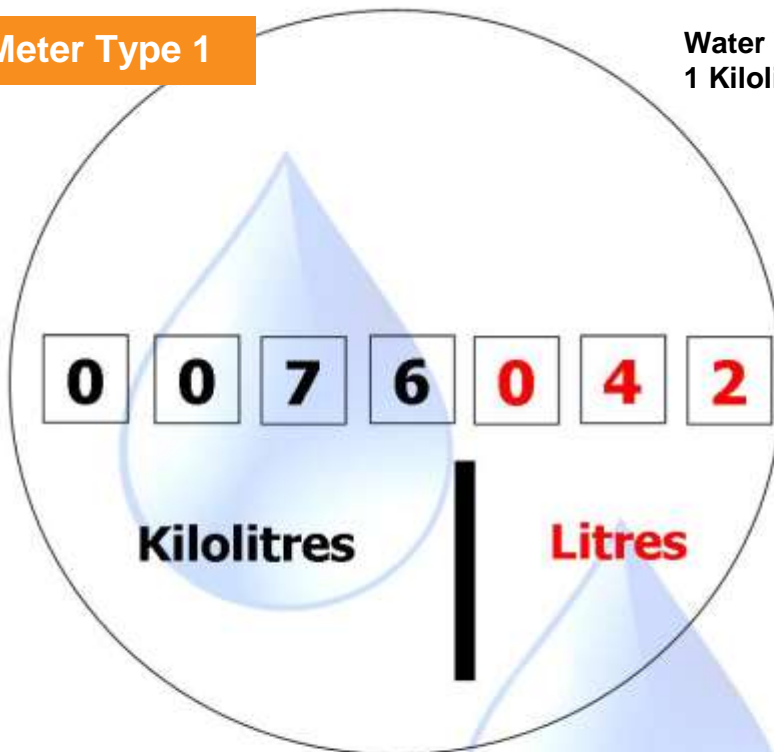


How to Read Your Water Meter

Meter Type 1



Water Volume is Measured in Kilolitres.
1 Kilolitre = 1000 Litres (220 Gallons)

Water Meters have a series of numbered wheels. These wheels are counters and indicate the amount of water consumed.

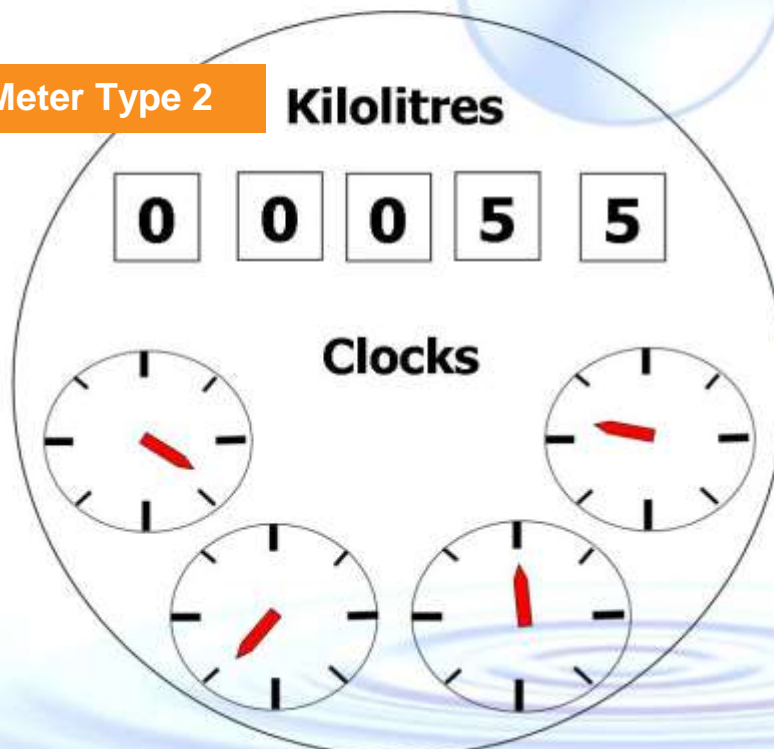
The **Black Numbers** indicate the Kilolitres consumed.

The **Red Numbers** indicate the Litres consumed.

When Reading this Water Meter - Type 1 **only** read and record the **Black Numbers**/Kilolitres.

E.G. This reading is 76 Kilolitres.

Meter Type 2



Some Water Meters have clocks that count the 100 Litres, 10 Litres, 1 Litre and 100 Millilitres. These are equivalent to the **Red Numbers**

When Reading this Water Meter - Type 2 **only** read and record the **Black Numbers**/Kilolitres.

E.G. This reading is 55 Kilolitres.