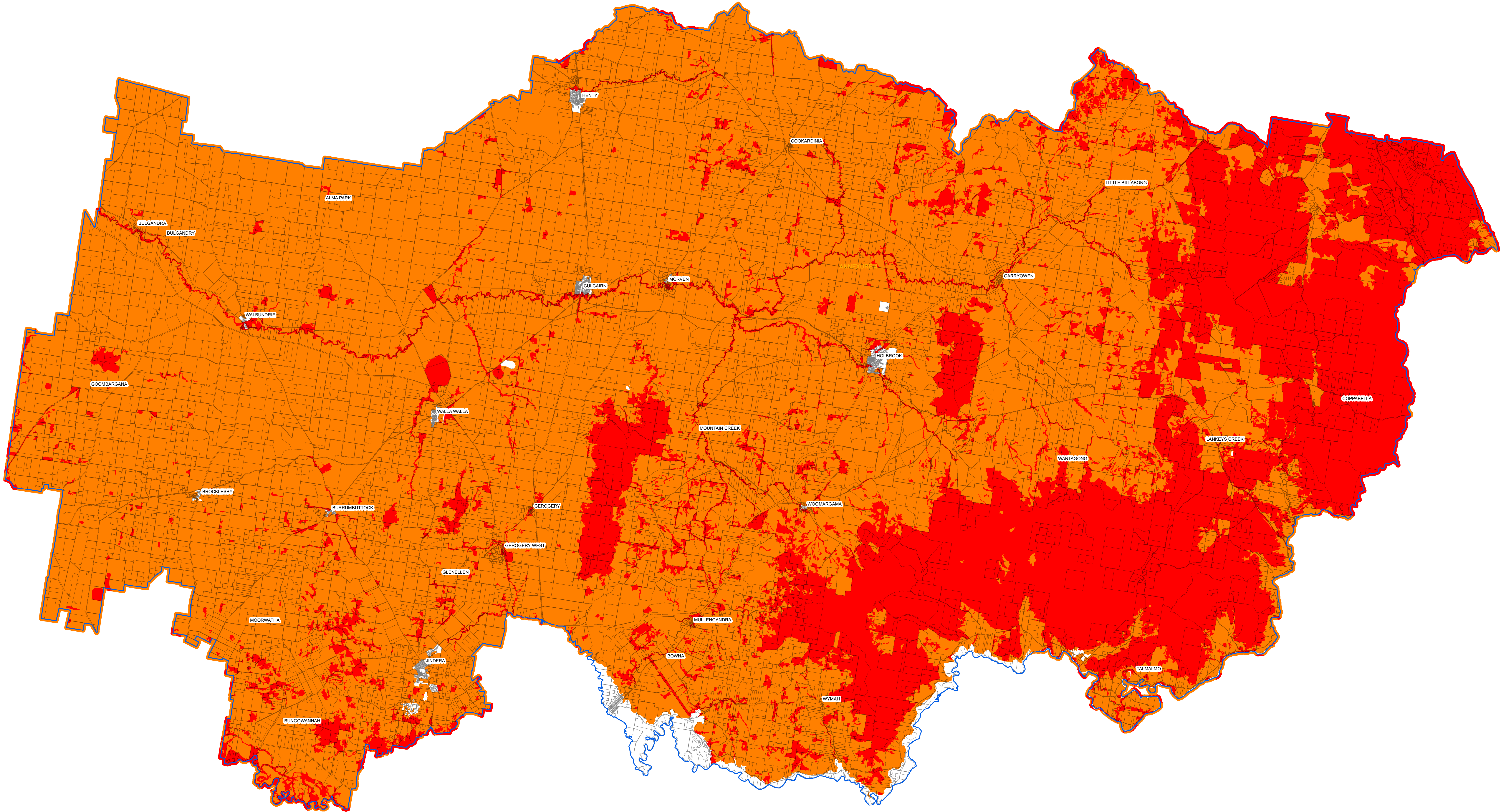



DRAFT



DRAFT

Greater Hume Shire Council ~ Bush Fire Prone Land Map



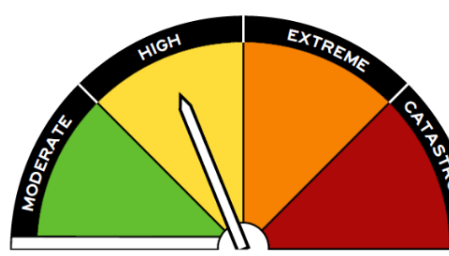
Data supplied by various Stakeholders under ANZLIC\* Guidelines.

The information contained herein has been provided in good faith. Effort has been made to ensure its accuracy and completeness.

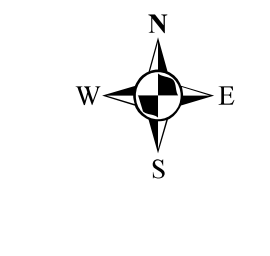
The Stakeholders take no responsibility for errors or omissions nor any loss or damage that may result from the use of this information.

\*Australia New Zealand Land Information Council.

The Australian Fire Danger Ratings (AFDRS) levels are:



<b>MODERATE</b> Plan and prepare	<b>HIGH</b> Be ready to act
<b>EXTREME</b> Take action now to protect life and property	<b>CATASTROPHIC</b> For your survival, leave bushfire risk areas




Data Dictionary		Source	Date	Copyright
Theme				
Property Information	NSW Spatial Services	2025	© Crown NSW	
Local Government Boundary	NSW Spatial Services	2025	© Crown NSW	
Bush Fire Prone Vegetation	NSW RFS / Council	2025		
Bush Fire Prone Buffer	NSW RFS	2025	© RFS NSW 2025	
© Crown NSW				

**Legend**

Greater Hume LGA

**Category**

- Vegetation Category 1
- Vegetation Category 2
- Vegetation Category 3
- Vegetation Buffer



0 2 4 8  
Kilometres  
1:119,000

Produced by  
NSW RFS Development Planning & Policy  
7 April 2025

