



Your November 2021 Community Newsletter

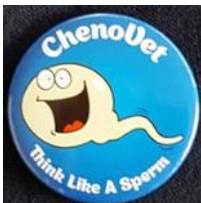
WALLA WALLA BUSINESSES:

Written by Françoise McPherson

Edited by Peter Chenoweth

Past

Chenovet Animal Andrology only got its name at the end of 2011 and reflects the founder's name (Peter Chenoweth) and the nature of the business which is a veterinary diagnostic service. Chenovet is strictly animal andrology (male fertility) diagnostics only but there have been people bringing in their dogs for nail trims, vaccinations and phone calls requesting assistance for a cat bitten by a snake, booking surgery for a Labrador with a ruptured ACL and others. My suggestion for the business name was Sperm Central as that is what my workplace is but that was quickly shot down!



Peter Chenoweth has dedicated his life as a veterinarian to livestock fertility testing and animal reproduction research. The first animal andrology lab Peter started was set up at the University of Colorado (1976) and subsequent andrology labs were established in Kansas (1997) and Florida (1991) in the USA. Upon returning to Australia, Peter was a founding member of Charles Sturt University's brand new School of Veterinary and Animal Science in Wagga Wagga in 2005 which I joined in 2008 to teach and prepare lectures and practical classes to students in veterinary, animal and equine sciences. Subsequently, I was also a postdoctoral research fellow funded by the Pork CRC working on a pig reproduction research project and I spent a month in my native Netherlands to learn pig IVF methodology at Utrecht University. Following changes in the Head of School and priorities, Peter went into private practice with me as his sole employee. Initially based in Wagga, we moved the business first to Henty and in February 2018, Chenovet Animal Andrology moved into the Lions Club House in Walla. The Lion's House was origi-

nally the residence and practice of the Sydney doctor Helmut Hein and his family from 1901 (see below). A total of 13 doctors practised here with the last one being Dr Jelbart who left in 1940. It has also been occupied by the Country Women's Association from 1952 (which explains the large size of the kitchen-all those scones they baked!) with the provision the front two rooms where Chenovet operates out of always be available to visiting doctors from Culcairn until 2000 when the Lions Club took over leasing out rooms to the craft club.



The Doctor's Residence, showing Dr Hein (standing), the first doctor, and his wife (nursing the child). Dr Hein began his practice in December 1901 and Walla Walla enjoyed the convenience of a resident doctor until 1939 when Dr Jelbart became the last resident doctor. Since then the two front rooms have been used as a surgery for regular weekly visits by Culcairn doctors. The rest of the house is now owned and used by the Country Women's Association.



While at CSU, we did the whole spectrum of bull testing including semen collection on-farm in the

Riverina and Upper Murray districts. However, we no longer have the time to make farm visits. Occasionally we still visit semen collection centres for quality assurance purposes and make suggestions for improving methodology. We once collected semen from a client's ram in a trailer in the alley behind the Henty IGA. Normally deserted, the alley was crowded with curious onlookers that day!

Present

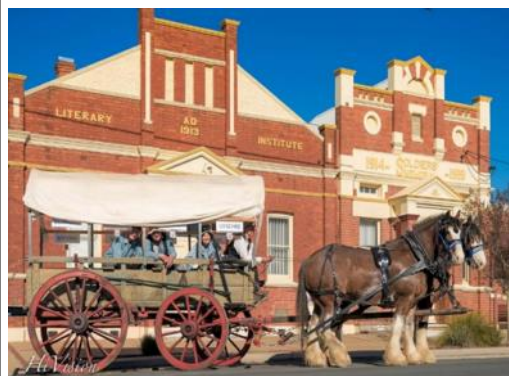
As of December 31st, 2020, a grand total of 32,517 samples submitted by clients have been processed since 2006. This represents 27,328 bovine, 3,816 porcine, 1,114 ovine/caprines, 107 equine and 93 canine samples.

» Continued on [page 2](#)

HERITAGE BUILDING AND WAGON SHED

North end of Commercial Street Walla Walla.

After the 125th celebration the committee decided to build a shed to house a wagon which is a replica of the original wagon used.



The Committee are proud to have established a facility to store part of our history of early transport.

» Continued on [page 3](#)

POST OFFICE UPDATE

With online shopping, COVID-19 and Christmas, our parcels have increased dramatically. We are asking Walla residents to please collect your parcels between 11am and 5pm. You could also come in on Saturday morning between 9am - 11am. Many thanks, Michelle



IN THIS ISSUE:

- Greater Hume Children services » [Page 7](#)
- Walla and District History » [Page 8](#)
- RWW Giants update » [Page 14](#)

deer farming was

popular in Australia, we also tested semen from Red deer and Fallow deer. Bulls are most represented, being derived from 57 beef breeds, with Angus most prevalent, and Jerseys being most prevalent for dairy bulls out of 13 breeds. Photos below show different methods of bull semen collection which is not for the faint-hearted! Dogs are represented by 34 breeds from King Cavalier Charles spaniel to Leonberger and we have tested 15 equine breeds including a miniature jack (donkey). Only 3 boar breeds are represented: Duroc, Landrace and



Large White. Goats are mainly Boer with some dairy bucks (Anglo Nubian and British Alpine) while Polled Merinos represent the bulk of the ram samples. We are now up to 36,755 samples processed since 2005.

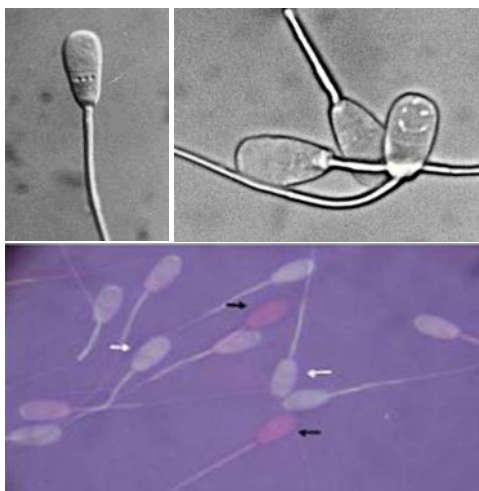
It is cheaper and less invasive to test semen than to subject a female animal to fertility testing and it can also be done before problems occur. Of the livestock industries, the beef cattle industry is the most proactive in getting sires tested prior to sale and breeding. Piggeries, which often breed their own replacement boars due to stringent biosecurity measures, test all of their sires regularly to ensure they are all performing as they should despite their mating workload, age or climate.

Semen is sent in by veterinarians, semen collection centres, hobby breeders and stud farms. It can arrive either "fixed" (preserved) in small vials, or as frozen straws in liquid nitrogen tanks. The latter arrives via courier, Australia Post (much to the disgust of Sky when she worked at the Walla post office!) or it is delivered in person. It is mind boggling how much animal semen passes through Australian airports and freight depots! Our clients are located as far east as New Zealand, as far north as Townsville (Qld) and Katherine (NT), as far south as Tasmania/King Island and as far west as Broome and Bunbury (WA). There are also clients based more locally in Holbrook, Culcairn, Pleasant Hills, Henty, Wangaratta, Rutherglen and Deniliquin. Currently we have 141 clients, a number which increases annually.

Reasons for testing semen are to ensure economic losses from infertility are minimised, infertility insurance cases, investigating the cause of subfertility, providing breeding fitness certificates for animals before sale and screening import/export semen. In addition, semen processing centres often seek checks on their quality con-

trol. Bovine semen is often imported from the USA/Canada while ram semen is exported to New Zealand. Elite sires, such as bulls participating in the Angus Benchmarking Program, are tested as well as 'mop up' bulls that are joined to cows as a backup to artificial insemination. Stallions tested are most often performance horses such as European Grand Prix level showjumpers or Australian Stockhorses competing at Futurity level or show horses. Dogs are mainly working farm dogs or pedigree show dogs, although some are highly expensive sires from overseas. Over the years, we have also been doing semen testing for research projects funded by Dairy Tasmania, University of Melbourne, Bayer and others.

Male fertility is multi-factorial and influenced by genetics, nutrition, health status, stress, libido and stamina. Semen quality and sperm quantity are obviously very important, and at ChenoVet we use a computerised Androvision™ sperm analyser from Minitube, Germany to assess total sperm number (sperm count), concentration (million per ml) and motility % (movement) which must be progressive and forward. Sperm morphology (defects such as coiled tail, round head etc), membrane integrity, DNA structure and bacterial load are as-



Upper left: Defective sperm head with craters known as 'diadems'. Upper right: craters joined to form a 'smiley face'. This has not been photoshopped! Bottom: sperm stained with eosin-nigrosin dye to show intact membranes (white heads) vs leaky membranes (red/purple heads).

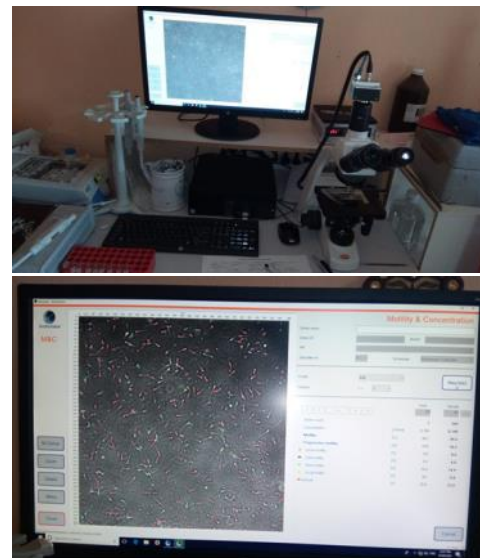
essed by DIC microscope at 1000X magnification. All parameters must be above the minimum pass threshold for each species

as determined by the Australian Veterinary Association to be classed as satisfactory for achieving conception.

Future

It is envisaged that the current increase in semen testing will continue which has already meant Deb Rickey is now employed on a casual basis. Meanwhile, we are working on writing another textbook chapter in an e-book about bull fertility targeted at veterinary students and a textbook chapter

on genetics of maternal and reproductive behaviour in domestic animals which is soon to be published. Plans are well underway for creating a new VET course in animal reproduction covering all domestic spe-



Above: The Androvision™ set up showing the microscope, computer screen with semen readings, warming plates etc. The screen close-up shows immotile sperm (red dots) and motile sperm (green tracks). The DIC microscope for morphology readings is shown separately.

cies. We will also continue to provide the annual semen technology short course aimed at industry participants and conducted in partnership with Minitube Australia. In November 2019, Peter spent a day at Coonong Station in Urana to teach the Dohne Merino sheep stud employees the



Top: Peter (far right) with the staff at Coonong Station after completing their semen course in 2019.

Bottom: Peter (front, middle) teaching a semen short course to employees of semen collection centres, stud farms and veterinarians at CSU, Wagga Wagga.

fine art of semen collection and assessment. And we are both involved in the international Biennial Association for Applied Animal Andrology conference series. The next one is in Bologna, Italy in June 2022, Covid-19 permitting.

SUNSHINE WALK

Our team is fundraising to support the Albury Wodonga Regional Cancer Centre Trust Fund. Regional people deserve the very best in treatment and care, just like people in capital cities.

Every cent we raise will stay in our region to help local people impacted by cancer. People going through the cancer journey should be able to do it close to home, where they can be supported by their family, friends and communities.

Our team is starting at Walla Sportsground at 8am Sunday November 7th. We will complete our walk then have refreshments/sausage sizzle at approx. 11.30am at Walla Sportsground to share stories and put our weary feet up. We would love to see anyone who enjoys walking join us on the day whilst supporting a great cause

You can choose to walk 5, 10 or 20km on the day. Bring own water

To donate or register to walk go to the below link <https://give.awcancertrust.org.au/fundraisers/wallaswalkers>

Any further info can be obtained from Brett Kohlhausen 0475 953 603 or Leonie Carey 0408 365 895



REMEMBRANCE DAY 2021 AT WALLA WALLA

by RSL member Herb Simpfendorfer

Remembrance Day 2021 will be observed at Walla Walla on Thursday November 11th.

According to the latest information about the Covid situation, we can go ahead with much of what we normally have on Remembrance Day at the Bi-Centennial Park, while observing Covid restriction rules.

However, the situation could change at any time between now and November 11th. To be quite sure everyone is fully informed, there will be updates on the town's notice boards.

People who would like to be involved are to go to the Bi-Centennial Park at 10.30 am. No seating will be brought to the park.

There will be lots of poppies, flag flying,

bugle calls, reciting of The Ode, wreaths, reading the names of all people from the Walla area who went to War.

The special time will be at exactly 11 am, when we and everyone else in eastern Australia will observe one minute's silence.

If much of our normal program is banned, we will still have wreaths, bugle calls and our flag on the flagpole.



Wreaths can be placed on the cenotaph at any time, before, during or after the ceremony.



EXCITING TIMES AHEAD

In the August issue of the Walla Newsletter, we indicated that we were looking to pass on the role of Editor to another person. The Newsletter Team considered each of the applications for the role, and resolved to recommend Stephanie Odewahn for the role. The Community Development Committee met on Monday 18th of October, and officially endorsed the appointment.

We would like to offer Stephanie a warm welcome into the role, and will be working with her over the coming weeks to make the transition as smooth as possible. At the time of writing, it is expected that Stephanie will be compiling and editing the December issue of the Walla Newsletter – to be confirmed at the time that the reminder for the December Issue is distributed. We are really excited to see the new perspec-

tives and fresh ideas that she will bring to the role!

We would like to say a huge thank you to the Newsletter Team, who each play their important part in bringing together the content each month, and for all of their recommendations that help us to continually improve.

Finally, we would like to express our gratitude to you, the community. Without your articles, your readership, and your enthusiasm, the Walla Newsletter wouldn't be half of what it is now (or may not even exist at all). We hope that over the past two and a half years, we, along with the Newsletter Team, have been able to reflect at least a small fraction of how vibrant the rural town of Walla Walla is, and how active its community members are in making this such a great place to live.

Ben and Raquel
Editors

« Continued from page 1

In 1868 a group of 56 Lutherans travelled in covered wagons from Ebenezer SA to this location.

There were 14 covered wagons and 2 spring carts together with 31 horses, a few milking cows and some hens. They travelled 1000 kilometres to land north of Albury, got to know German families at Jindera before settling in Walla Walla.



This horse drawn wagon has been used in several parades at Walla Walla, Jindera, Culcairn and Walbundrie. It has created great interest from our community families, especially children, and even used as a background for family photos.

We have a committee who service the wagon, check the wheel hubs, replace timber components, paint parts, etc for road worthy.

The building and contents are housed on land leased from Zion Lutheran Church. Our committee is a Section 355 of the Greater Hume Shire Council.

Long term thoughts are to make videos. Eg clothes of yesteryear, example of survival, crossing the Billabong Creek, etc.

We welcome members of Walla Walla community to join our Heritage Committee. Please contact us if you have that interest.

President: Merv Wegener (0427293291)

Secretary: Ross Krause (0427651711)

WALLA WALLA CROQUET CLUB NEWS

On Wednesday 13th October we welcomed and enjoyed a great day of croquet and fun together with Howlong Croquet Club members.



Although it was cold the rain held off.

There was a lot of close scores and plenty of laughter finishing off with a lovely early lunch.

Thank you to all our members who set up the courts, provided and served food and made this such a successful day.

You are very welcome to come along to the Walla Bowling Club anytime we are there and try our fun game of Croquet,

We play on Saturday and Monday mornings starting at 9.00am. Please wear flat soled shoes.

Helen Krause
0427260737

CHURCH TIMES

Lutheran Church Walla Walla

1st and 3rd Sundays 9am

2nd and 4th Sundays 10.30am

Contact: Pastor Dan Mueller 0413 032 455

<https://walla.lutheran.org.au>

Lutheran Church Alma Park

1st, 3rd & 5th Sundays 10.30am

2nd and 4th Sundays 9am

Contact: Pastor Dan Mueller 0413 032 455

Baptist Church Market St. Walla Walla

Sundays at 10am

Contact: Marj Rayner 0459 292 233

Catholic Church Market St. Walla Walla

1st and 4th Sundays 6pm

Contact: Father Terence Mahedy 0458 298 363

Anglican Church Balfour St. Culcairn

1st and 3rd Sundays 9.30am

Contact: Father Bob Done 6026 3691

Community Service on the 5th Sunday of the Month

RURAL CARE LINK

Ring 6026 3001 or 0475 594 073

Jindera Community Hub, 83 Urana St.

Carers Support Group

Contact: Jenny O'Neill, 0438 263 417

URGENT NEEDS:

- ⇒ Lifeline 13 11 14
- ⇒ Beyond Blue 1300 224 636
- ⇒ Mensline Australia 1300 789 978

WALLA WALLA BOOK SWAP

In the Hall behind WAW

Open when WAW is.

No fees or membership. Just choose a book, keep it and swap one you have read or bring it back and swap again.

Books for all ages.

Jesus said: 'My commandment is this:

Love one another, just as I love you.'

John chapter 15 verse 12



WWM RESEARCH

Just a quick note to say that we are now open for all your research needs. Our website will be live soon. We can help you with all your research needs at competitive prices, such as;

- Family history research
- Translation of documents from German into English
- Object appraisal and identification
- Preservation needs assessments for your family heirlooms

All of the above are carried out by our experienced and qualified professional curators and historians.

For all enquiries please call: 0417 271 464

We acknowledge the generous support for the community newsletter from Kotzur Pty Ltd (printing) and the Walla Walla Post Office (newsletter distribution).

Editors: Ben and Raquel Kotzur.

Team: Jenny Jacob, Françoise McPherson, Julie Barber, Herb Simpfendorfer.

DISCLAIMER

The opinions stated in this newsletter are those of the contributors and not necessarily representative of the editors, the newsletter team, Kotzur Pty Ltd or, the Walla Walla Community Development Committee.

Where there are space limitations, the editors may need to edit or omit articles. The editors will not be held responsible for any errors.

RECYCLING NEWSLETTERS

If you don't need your Newsletter anymore, can you please leave it or any other old copies you have, at the Walla Post Office for others to read.



Greater Hume Council are reviewing the Community Strategic Plan (CSP).

The CSP is driven by you, the community for the community.

We want to know what you **love about life** in Greater Hume, your **BIG idea**, what our **preferred future** looks like and how we can all **work towards achieving** that.

Scan Me - What's your BIG idea and Have your Say!



#greaterhume
#visitgreaterhume

WALLA POOL AQUA CLASSES

Thursdays

5.00 pm Gentle beginners

Class designed as an introduction to water exercise. Low impact. Shallow water.

Duration 20 minutes.

5.30 pm Aqua Class

Class involves warming up, high intensity and conditioning deep water workout and a cool down.

Duration 45 minutes.

Commencing

Thursday 11 November 2021

Cost \$2. Phone Leeny Mason
0419605566

Murrumbidgee Local Health District
Aqua Trained Leader



RAINFALL AT WALLA WALLA FOR SEPTEMBER 2021

Sept 1 (0.4 mm), 2 (0.8 mm), 3 (5.6 mm), 4 (6.0 mm), 5 (1.6 mm), 14 (8.2 mm), 15 (3.0 mm), 16 (8.6 mm), 17 (13.2 mm), 18 (6.0 mm), 20 (4.4 mm), 21 (3.6 mm), 23 (2.0 mm), 24 (1.6 mm), 25 (11.6 mm), 26 (15.6 mm), 28 (1.0 mm), 29 (2.2 mm), 31 (2.2 mm). Total for Sept 97.6 mm. For 2021 to end of Sept 425.1 mm.

LADIES BOWLS

Our ladies bowls club has Social Bowls each Thursday morning 10am. We welcome new players, beginners, anyone who would like to join us. You will need to wear flat soled shoes (we can supply bowls for you). Phone Deidre 0409 947 392.

BOOK CLUB

An interesting group of ladies from Culcairn/Henty/Walla area meets on the 3rd Monday of each month (7.30 pm) to discuss a book that we read. We meet in the homes of members. If you enjoy reading we would love you to become a member. Contact Marj Rayner 0459292233



FREE BEE SWARM REMOVAL

Contact Heidi
0407 063 874



PRAYING FOR WALLA

Join us as we pray for each other, our community, and the world. We meet on the fourth Thursday of every month at the Lutheran church hall from 8pm. Our next meetings are 28 October and 25 November. For prayer requests please contact Pastor Dan Mueller (0413 032 455).



Hume Medical Center Is Now



VECARE HEALTH

"We care for your health"

Same Doctors, New Management

Providing healthcare services at Holbrook and Walla Walla

We at Vecare Health will strive to provide quality holistic healthcare, at your door step.

We will be introducing new services soon.

For more information checkout the website :

vecarehealth.com.au

Doctors:

Dr. Ramanpreet Gill, MBBS, FRACGP

Dr. Wah Wah Soe, MBBS

Dr. Sudha Jayaraman, MBBS

TAKE OLD CAR BATTERIES TO LIESCHKE MOTORS

The proceeds go to the Walla Walla Community Development Committee, to use as needed for our community.

**Thank You Lieschke
Motors!!**



We have childcare places available in Walla Walla

At the Walla Walla Centre -

- Long day care available Monday to Friday 7:30am - 5:30pm
- Qualified and experienced educators
- Natural learning environment
- Childcare government subsidies available

Enrol online at ghchildren.com.au

Enquiries M 0436 812 579

E mail@ghchildren.com.au



Greater Hume
**Children
Services**

Indoors, Outdoors and Beyond the Gate

Save the date

2021 NSW Local Government elections

**Saturday
4 December**

Voting is compulsory

elections.nsw.gov.au/lge21
1300 135 736

2021 NSW Local Government elections

Greater Hume Council will conduct **councillor elections** to elect nine councillors, to serve for a three year term, on Saturday, 4 December 2021.

In September 2020 Council resolved that a **constitutional referendum** be held regarding wards in conjunction with the Local Government Election.

Scan for more information on the elections,
Becoming a Councillor and the referendum:



Greater Hume Council

VECARE HEALTH

We offer access to the following services:

- * Dietitian
- * Psychologist
- * Riverina Podiatry
- * Australian Hearing
- * Psychiatrist

Please see reception for access to these services

MOBILITY Aids- FOR LOAN AT WAW

Items available are:

Wheelchair
Shower chairs
Toilet seats
Walker
Crutches
Blanket
Frame



TO RENT 2 BEDROOM UNIT

TOWNVIEW AVE, WALLA WALLA

\$190 per week

(Includes water usage)

References required

Please contact:

0408 365 895 or 0488 342 878



Calling for Nominations of Greater Hume's Top Citizens

Citizen of the Year Young Citizen of the Year
Community Event of the Year
Sports Person/Team of the Year Sports Volunteer of the Year

Applications close Wednesday, 8 December 2021

Online nomination forms for all award categories are located on Council's website (www.greaterhume.nsw.gov.au) or a hardcopy can be picked up at one of Councils Customer Service Centres at Culcairn, Henty, Holbrook, Jindera and Walla Walla.

**Greater Hume's Australia Day celebrations will be held at
Ten Mile Gardens, Holbrook on Wednesday, 26 January 2022.**



**Greater
Hume
Council**

For more information please contact:
Kerrie Wise, Tourism and Promotions Officer
02 6036 0186 or 0448 099 536



**AUSTRALIA DAY
IN GREATER HUME**

WORLD MENTAL HEALTH DAY

written by Françoise McPherson

Warning: this story mentions suicide.

October 10th was World Mental Health Day as decided by the World Health Organisation in May 2021. The aim is to reduce the social stigma associated with mental disorders and raise global awareness of mental health, increase funding and mental health services and how to recognise danger signs to obtain help. There are several mental health disorders, notably depression, anxiety/phobias, borderline personality disorder, schizophrenia, bipolar disease, post-traumatic stress disorder (PTSD), obsessive compulsive disorder (OCD). Then there are various forms of addiction, substance abuse and eating disorders such as anorexia and bulimia.

Mental health is gaining more attention, especially during the current pandemic which has caused a surge in calls for help. People from all backgrounds and ages are affected. Severity of mental health disorders depend on socioeconomic factors such as access to health services, employment status, family dynamics etc. Covid-19 has increased the severity and incidence of mental health disorders through loss of income, border closures, social isolation and mandatory quarantines and lockdowns.

Since March 2020, the Australian Government has provided more than \$500 million in additional funding to provide more mental health support during the pandemic. These measures include telehealth services for mental health and more funding to Beyond

Blue, Kids Helpline, Lifeline and Coronavirus Mental Wellbeing Support Service. A record \$2.3 billion has been invested in the National Mental Health and Suicide Prevention Plan by the Morrison Government.

Of 180 countries surveyed, Australia has been named the second most depressed country in the world tied with the USA and Estonia at 5.9% of the population being depressed. The most depressed country is Ukraine with 6.3 % of its population affected. In the Indo-Pacific region of 21 countries, Australia was runner up to New Zealand in prevalence in anxiety disorders at 7% of the population affected.

Some Australian statistics:

- approximately 1 in 2 (46%) Australians experience mental health disorders during their lifetime and 1 in 5 (4.8 million Australians) reported suffering from a mental disorder in the period 2017-2018

- anxiety disorders (14%) are more prevalent than affective disorders (6.2%) or substance abuse (5.1%)

- the most affected age group is 16-24 years old (26%) while the least affected age group is 0-14 years old (11%)

- 14% of children (560,000) aged 4-17 years old have been diagnosed with a mental health disorder

- females are slightly more often affected than males (22% vs 18%)

- In the 4 weeks before April 25, 2021, Lifeline received almost 82,000 calls while Kids Helpline received almost 26,000 calls and Beyond Blue received 22,000 calls.



-years of healthy lives lost per 1000 people due to substance abuse and mental disorders is 2.4 times higher in indigenous Australians (57.8) compared to non-indigenous Australians (23.6).

-72% of people who are suicidal have had a mental disorder for 12 months or longer.

If you, or someone you know, is showing signs of needing mental support, get help by contacting Beyond Blue, Lifeline, Kids Helpline etc without delay. Your actions could well be saving a life! Some suicidal warning signs include social withdrawal, feelings of hopelessness, loss of interest in work or activities previously enjoyed, persistent sadness, actively plotting one's own demise or no longer caring about the future. Ask "are you okay?" any time, not just on R U Okay Day in September and continue the conversation.

References: <https://www.aihw.gov.au/reports/australias-health/mental-health>; <https://www.aihw.gov.au/reports/mental-health-services/mental-health-services-in-australia/report-contents/mental-health-impact-of-covid-19>; <https://www.scimex.org/newsfeed/who-estimates-say-australian-is-the-most-depressed-country-in-the-western-pacific-region>.



GREATER HUME CHILDREN SERVICES

Council's Children Centres and Family Day Care are OPEN

Greater Hume Children Services has continued to provide much needed child care services through its centre based services at Holbrook, Henty, Culcairn and Walla Walla in addition to the more than 60 Family Day Care educators based across the region from Batlow to Benalla.

It's been a challenging year with the impact of COVID-19 affecting all services with the many changes, cross border issues and requirements required in order to remain open, maintain services, in addition to managing health and safety risks to remain compliant.

The Culcairn Early Learning Centre successfully transitioned to Greater Hume Children Services in July and continues to provide a full range of child care.

A new van was purchased to provide additional mobile playgroup and other services across all of our delivery areas.

With skills shortages in the early childhood education sector, staff recruitment was a key action; pleasingly, Council has appointed new Centre Directors to all centre based services.

Greater Hume Children Services Manager, Fiona Pattinson said "Our focus continues to be on the children and families and being able to provide services. Our service staff and educators have been amazing and continue to step up and meet all of the challenges that have been thrown at us and I would like to acknowledge and thank all of them for the valuable work they do on a daily basis."

Demand for services remains strong with Family Day Care having a waiting list for the first time in a long time and the Holbrook centre operating close to capacity.

We still have vacancies available for families who need the service for work and who want to maintain routines and consistency for their children.

Additionally, there are work opportunities for new educators to work with the service particularly in the Family Day Care sector.

Contact the service on **1800 984 999** for more information.



WALLA AND DISTRICT HISTORY

CARETAKERS, LICENCE HOLDERS AND OWNERS OF THE WALLA WALLA RUN TO 1908.

Part 3

Up until 1845, we have read about: 1. The Wiradjuri People, as first inhabitants; 2. Mary Larkham, an Emancipated Convict; and 3. Charles Moore Edgehill, one time Commissioner of Crown Lands at Sydney, & Grazier; 4. John King, Pastoralist and Victorian Member of Parliament; 5. John Ray, Convict Parentage and Grazier; 6. James Smith, Superintendent of Convict Farms & Grazier; and Charles O'Neil, Grazier; 7. Dr. Patrick Hill, Convict Ship Surgeon, Unacknowledged Pioneer of Australian Mental Health, Magistrate & Property Owner/Pastoralist; and John Crichton, Partner & Property Overseer for Dr. Hill.

1846/1847: Aimee Augustus Huon & Charles Huon. – Sons of a French Nobleman, and a French Convict Mother; Pastoralists, and Albury & Wodonga District Pioneers.

Aimee Augustus Huon, 1806 – circa 1856, & Charles Huon, 1810 – circa 1894, both died in Fiji.

Aimee and Charles Huon were members of an extended family of original settlers in what later became the Albury Wodonga region; the Huon, Mitchell and Brown families. Their father, Gabriel Louis Marie Huon de Kerilleau, was descended from French nobility. During the French revolution, and due to his adherence to the French crown, he had fled to England in about 1791 as an aristocratic refugee. While in England, he had heard of British settlement in New Holland and decided to join the NSW Corps as a private. He arrived in Sydney on the convict ship "Surprise" in 1794. On enlistment into the NSW Corps, Lois anglicised his name to simply Huon.

Their mother, Louisa Emanuel Le Sage, was also a French citizen, and had fled France for England in 1894, where she worked as a servant. After about 5 weeks she was tried for theft in the Old Bailey for stealing a watch and related parts, and some clothing. For this she was sentenced as a French convict to seven years' transportation, arriving in Sydney on board the ship 'Indispensible' in 1796; the same ship as Mary Larkham, Walla Walla's first lease holder!

Following the mysterious death of their father Lois, while walking to Sydney from the Shoalhaven in mid-1837, Aimee and Charles, along with their recently widowed sister, Elisabeth Mitchell, moved to the largely unoccupied region of the Murray or Hume River now known as Wodonga which their older brother Paul had moved to in 1836. Elisabeth took on the small Mungabareena run in 1837 after her brother Charles had purchased it for her from Charles Ebdon. This run occupied all of present-day Albury, Thurgoona and Lavington. Aimee and Charles pursued further property interests between Wodonga and Beechworth for a few years before moving across the Murray to occupy Mahonga (Rand), Gerogery, (which later included Brae Springs), Walbundrie (which later included Piney Range) and Burrumbuttock (briefly); all between 1839 and 1842. All these stations were adjacent or nearby to the Walla Walla run. Brae Springs was formed from the large Gerogery run for Edward Brown, the father of Charles Huon's wife, Mary, in 1846. Edward was also the father of Robert Brown, Albury's first resident, and hotelier.

Although Hill and Crichton held the lease on Walla in 1845, there is no mention of them holding it in 1846 and early 1847. According to eminent Albury historian from late 1800's and early 1900's, Dr Arthur Andrews, the Huons held the lease on Walla in 1847, and were likely to have been running stock on all or part of it much earlier, either legally or by "virtue of stocking" as mentioned in part 1.

In 1846-1847 a well-known Victorian pastoralist, Hector Norman Simson was keen to get his hands on Walla too; he had at least two unsuccessful attempts to purchase the lease on Walla.

1851 to 1859: John Sherwin - Pastoralist &

Victorian Member of Parliament.

Dr. William Sherwin. – The First Australian Born Doctor & First Doctor of Homeopathic Principles in the Colony.

John Sherwin (1811 – 1868), John took on a lease of land in the Sherwin Ranges, near King Lake in Victoria in the early 1840s. John and other members of his family moved to Melbourne in about 1840 and took up land in the Whittlesea area. Later on John opted to move north to the Riverina where he took on extensive leases of land on the Billabong, assisted by his Sydney-based brother William. John was also known as John Duggan, in reference to his mother Mary.

Dr William Sherwin (1804 – 1874), became the first qualified doctor to enter private practice in Paramatta in 1829. He was also the first Australian-born Doctor to study medicine overseas, in London 1823 – 1826. He was the second doctor to own, or part own, the lease on Walla Walla.

Their father, William Snr, had come to the colony aboard the convict ship "Pitt" in 1792 as a non-commissioned officer in the NSW "Rum" Corps. He then left the military to take up a position of Government Storekeeper at Parramatta. He was also a chief constable and hotel/inn owner. He was given a grant of land near Parramatta where he grew the first oranges in Australia. He cohabited in his convict-built inn at Paramatta with Mary Duggan, with whom he had 10 children, but they did not marry, as he had a wife, Ann, in England! That's another story in itself. In July 1851 the Crown Lands Office reported the change of ownership of runs, "Hill and Crichton. Walla Walla and Round Hill to John Sherwin;" It seems his brother, Dr William Sherwin, ran Walla Walla and Round Hill in absentia, electing to employ a manager. In addition to Walla Walla and Round Hill, John also owned Columbo Creek and later on, Wallandool, all on or nearby the Billabong Creek. The latter two may have been managed by John, but he had his name on the licences for all four properties.

Stephen Henty. – Shipping Merchant, Pastoralist, Magistrate and Victorian Member of Parliament.

Richmond Henty. – Pastoralist/Grazier & Victorian Member of Parliament.

Stephen Henty, 1811 – 1872, was a son of the noted Thomas Henty who had gone to Van Diemen's Land in 1831, setting up a merchant shipping business. He also had interests in whaling. In 1834 Stephen and others family members began a settlement at Portland, whaling and rendering the same for oil being the main reason for being there. In 1836, a rather surprised Major Thomas Mitchell stumbled upon their Portland Bay settlement, staying for a day or two. He then continued on his Australia Felix exploration journey back to Sydney via Howlong and the as-yet-unknown Walla Walla Gum Swamp area.

At the time of purchasing the lease and all stock on Walla Walla, Stephen had an interest in some form or other in at least 10 Victorian and NSW properties. Walla Walla (140 sq mile) and Wallandool (100 sq mile) were purchased for the sake of Stephen's son Richmond, 1837 – 1904, who had a lung complaint, and needed to move to a drier climate. Richy, as his mother called him, had been sent to England in 1854 at the age of 17, to further his education. On his return in 1859, Walla and Wallandool had been purchased and stocked, and a rundown cottage had been made more comfortable at Walla as his residence.

In August 1859 the Geelong Advertiser reported: "The sale of Walla Walla and Wallandool (sic) stations, on the Billy Bong, with 3000 head of cattle, £25,000, the property of John Sherwin Esq., to the Hon. S.G. Henty". This price of £25,000 was at the rate of £8 6s. 8d. per head, according to the Sydney Morning Herald.

In 1886, Richmond Henty wrote in his memoirs: "So the Walla Walla station was purchased on the Billabong Creek, with 3000 head of cattle, to which 1200 head of fine New England cattle were added subsequently. The country consisted of 140 square miles of open timbered country, with small

plains, and richly clothed with kangaroo grass and herbs, fine grazing land for cattle, and as it proved also at a latter period for sheep."

Wallandool (Alma Park/Pleasant Hills) had been abandoned by its former owner John Sherwin as "unworkable and useless." Richmond had it surveyed and concluded that about 80 sq miles could be utilized as a summer run. He built a cottage, woolshed and yards and a sheepwash in the Wallandool Creek. Wallandool Creek was used as a source of permanent water, dams were built on this source as a backup. After two years and two wool clips, from 12,000 sheep, Richmond had realised £17,500 worth of washed wool from a station abandoned just 3 years earlier! [Australiana – or My Early Life (1886) Richmond Henty.]

Richmond Henty, and his managers, ran the Walla Walla run for the first time as a very tight financial enterprise; by 1861, gone was the reliance on cattle, and in came the sheep. In 3 years, 1859 to 1862, cattle numbers were cut back from 4,200 head to around 1,500 head, among those remaining were 6 working bullocks. Pure Merino sheep were introduced from the main family stations at Muntham and Merino Downs in Western Victoria; while they were not heavy wool cutters by any means, they thrived. During the Henty period, a woolshed was built in 1859 beside the Billabong, almost in the shadow of Morgan's Lookout, about 1 mile downstream from the homestead on 126 acres of purchased land. This was the first of three woolsheds known to have been built at different times on the property; 1859, 1868 and 1879. While Richmond was in England to get married in 1861, the homestead was extended, and a separate kitchen added. This was on newly purchased land on what was to become the homestead block. A sheepwash was built in the Billabong, the first of three known on the property, situated near the first woolshed. This wool washing process was essential at the time to remove as much natural grease as possible from the wool before shearing. Other outbuildings near the woolshed and near the homestead were also built. Separate stock yards were also upgraded or built new during the Henty period, these were across the Billabong, southwest of the current bridge. The size of the property was an "estimated 140 square miles, first class country, richly grassed open box forest, permanently watered by the Billabong." In 1862 the station ran about 20,000 sheep, and 1,500 cattle. The station boundary had been surveyed and was fully fenced using post and rail timbers, therefore undisputed. By the end of the Henty ownership in 1863, sheep numbers had increased even more, to 25,000, and cattle numbers had been further reduced to 500 head, among those remaining were 6 working bullocks!

It does appear that S.G. Henty bought these two properties as some tie up with another party, H. Sampson or Samson. When the properties were transferred from Henty to Stitt in 1863, the "From whom transferred" has: S.G. and R. Henty and H. Sampson, to S.G. and R. Henty, then transferred again, from S.G. and R. Henty to Stitt Bros. This, however, was only finalized in early 1867, 4 years after Stitt Bros took over the initial lease. It seems that S. Henty, R. Henty and H. Sampson still owned their pre-emptive rights on land purchased after the Squatters' Act of 1847, and before the Robinson act came in, during 1861, this was 1573 acres in all. The Stitts must have been leasing these rights from the three parties, and only eventually paying £1573 @ £1/ acre in 1867, hence the complicated transfer earlier.

Part 4. Owners 11, Stitt; and 12/13, Douglas; continues in the February 2022 newsletter. December issue will be 2022 One Hundred Years Ago, 1922.

Submitted by Anthony Brinkmann, on behalf of the Walla Walla and District Historical Society Inc. 2021.

Sources: Australian National Archives via Trove; Walla Walla Timeline 1838 to 2021; Australiana or My Early Life, Richmond Henty – 1886; First Settlement of the Upper Murray, HC Book, 1920, Dr Arthur Andrews; History of Albury, 1912, Dr. Arthur Andrews; Australian Royalty, Convict records Online.

November Community Diary

Mon	Tue	Wed	Thu	Fri	Sat	Sun
1 - Croquet, 9am, Bowling club	2 - Social tennis 9.30am, Walla Courts - Melbourne Cup Day	3	4 - Ladies Bowls, 10am	5	6 - Croquet, 9am, Bowling club - GHC swimming pools open	7 - Sunshine Walk, 8am
8 - Croquet, 9am, Bowling club	9 - Social tennis 9.30am, Walla Courts	10	11 - Ladies Bowls, 10am - Remembrance Day, 10:30am, Bi-Centennial Park - Water Aerobics	12	13 - Croquet, 9am, Bowling club	14
15 - Croquet, 9am, Bowling club - Book Club, 7.30pm	16 - Social tennis 9.30am, Walla Courts	17 - Council meeting, 6pm, Holbrook	18 - Ladies Bowls, 10am - Water aerobics, 5pm beginners, 5:30pm intermediate	19	20 - Croquet, 9am, Bowling club	21
22 - Croquet, 9am, Bowling club	23 - Social tennis 9.30am, Walla Courts	24	25 - Ladies Bowls, 10am - Praying for Walla, 8pm, Lutheran Church - Water aerobics, 5pm beginners, 5:30pm intermediate	26	27 - Croquet, 9am, Bowling club	28
29 - Croquet, 9am, Bowling club	30 - Social tennis 9.30am, Walla Courts					

PLEASE NOTE THAT ALL COMMUNITY EVENTS ARE SUBJECT TO COVID-19 RESTRICTIONS
Please contact the event organizer for further information

LOCAL BUSINESSES AND SERVICES

Walla Walla Bowling Club 6029 2146

Mon – Wed: 5.30 - 8.30pm

Thurs - Fri: 5.30 - 9.30pm

Saturday: 5 - 9pm

Meals are available Friday evenings.

WAW Credit Union 6029 2392

Monday-Thursday: 12.30-4.30pm.

Friday: 11am-12.30pm (closed for lunch 12.30-1.30pm) Friday pm: 1.30-5.00pm

Walla Walla Post Office 6029 2231

Mon-Fri 9am-5pm; Sat 9-11am

Second Hand Rose 6029 2116

Thurs & Fri 1.30 - 4.30pm.

Sat 9.30 - 11.30am

On Demand Regional Bus

Bookings: Phone or text: 0448 353 281

Walla Hotel 6029 2309

Mon - Sat - Opens at 11am;

Sun - Opens 12 noon

Kitchen: Thursday–Saturday 6- 8pm;
Sunday 12-2pm

Meals other times for min. of 10 if booked.

Walla Walla Hair Salon 6029 2277

Tuesday, Thursday & Friday:
9am – 5.30pm

Walla Food Mill 6029 2033

Mon-Thurs: 6am - 4pm;

Fridays: 6am - 8pm;

Sat: 8am - 2pm

Morgan's Lookout

Non-daylight savings: 8am - 5pm

Daylight savings: 8am - 7pm

Gates are locked outside of these hours.

Terry White Chemist Walla Walla 6029 2496

Mon-Fri: 9am - 5pm

Facebook: Terry White Chemmart Walla

Vecare Health Walla Walla

Mon: 9.30am- 5pm

Wed : 9.30am– 3pm

Fri: 9.30am- 5pm

Ph: **02 6073 2605** (during Walla opening hours) or **02 6036 2952** (Holbrook on other days)

www.vecarehealth.com.au

Walla Police Phone Number:

02 6053 4570

Emergency: 000

Mobile Library:

Every Monday at 9 am in front of the Walla Walla Public School, except public holidays

WANT TO SUBMIT A

NEWSLETTER ARTICLE?

Please send in any special acknowledgements, articles or request to be added to the email recipient list to:

wallanewsletter@gmail.com

or drop them in the box at the Walla Post Office.

- Articles should be received before 12 pm on the 15th of each month; preferably as early as possible **before** deadline day.
- All articles should be kept concise to save space.

Walla Website:

www.wallawalla.nsw.au

Old Walla Walla Bake Haus Tea Rooms 0455 225 401

Wed – Sun: 9am – 3pm

Return and Earn

10c eligible containers Call 1300 849 781 or 0447 927722, text.



On-demand Buses serving
Walla, Burrumbuttock,
Jindera and Albury.

The service is available on
weekdays 7am to 6pm,
and does not operate on
New South Wales public
holidays.

Bookings-Phone or text

0448 353 281

<https://www.regionalbuses.com.au/>

MUMMA J'S FOOD HUB

Opening Up In Culcairn

Mumma J's will be a Café / Restaurant

Coffee, takeaway food Plus

Eat in meals for Families

Pizza Nights, Roast on a Sunday.

Open Tuesday to Sunday afternoon

Please follow *Mumma J's Food Hub*

On Facebook to follow our Specials
& information

0419 149 887 any enquires & Booking

Stein 
plumbing co.

0434 107 143
DOMESTIC & COMMERCIAL
PLUMBING & GAS FITTING



Wattos Garden Supplies

1 Jarick Way, Jindera Industrial Estate

0448 600 433



MINI EARTHWORKS

Tree Stump Removal

Rotary Hoe

Yard Levelling

Landscaping

Post Holes

Trenching



If you want to dig it, pipe it, pump
it or fix it – we can do it!

Mobile: 0403 191 780

www.blueysplumbin.com.au

LOCAL PAINTER

Mark Gilcrist

Call for a quote: 0450 982 916.

WALLA WARES

55 Commercial Street, Walla Walla
An eclectic collection of old and new.
Upcycled furniture, vintage wares
and interesting pieces.

Wed — Sun 9.00am – 3.00pm

Ph: Virginia 0412 378 451



FOR SALE

6 ½ x 4 ½ trailer with spare tyre
and jockey wheel. \$500
Ph 0497 314 816

WANTED

For the duration of the National Firearms Amnesty:
Old shot shells, old rifle ammunition, empty or half
packets, wooden shot shell boxes, old powder
tins, pre decimal shooting magazines.

A fair price for the right items.

Please Ph Locky 0409 791 961

Lic 405593035

WHO WILL BUY YOUR HOME?

Chances are that it will be someone who has never been to the area. With over
1,000 offices nationally Ray White can expose your property to 1000's of
potential buyers.

Why not trust your most valuable asset to your locally based agent for your
FREE market appraisal.

LOCAL KNOWLEDGE – NATIONAL EXPOSURE



VIRGINIA SCHOLZ
M: 0412 378 451
T: 02 6049 0526
e: virginia.scholz@raywhite.com

The Walla Food Mill



Come in and take a break.
Have a seat out in our
courtyard or in the dining
room!

- Cakes
- Burgers
- Hot Food
- Fresh Sandwiches
- Tea/Coffee
- Cold Drinks



Pizza Night Friday Nights!
Follow us on Facebook!

Opening Hours
Mon – Thurs 6am till 4pm
Friday 6am till 8pm
Saturday 8am till 2pm



Looking for a great rate home loan with all the perks?

Our Flexible Choice Home Loan is full of
features, including a 2-year discounted
interest rate, fee waivers and a 100%
offset account.



1.99% **24** **3.84%**
Interest rate Month Comparison
Introductory Offer* rate*

Visit www.wawcu.com.au/Flexible-Choice or call 1300 658 555 to make the switch.

*Terms & Conditions apply. Standard lending criteria, fees, charges, terms and conditions apply. WAW may vary or withdraw this offer at any time without notice. #WARNING: The comparison rate is only true for the example given and may not include all fees and charges. Different terms, fees or other loan amounts may result in a different comparison rate. The comparison rate is based on a secured owner occupied principal and interest loan of \$150,000 over 25 years. AFSL & Australian Credit License: 247298. ABN: 48 087 651 787.

Body Beautiful Jindera

Waxing
Tanning
Nails
Teeth whitening
Hydrabrasion
Make-up
Lash Extensions
Facials



91 Urana st Jindera ph 60263434

FIRST AID - SHOCK

If the circulatory system fails, insufficient oxygen reaches the vital organs and the tissues. This triggers a series of responses that leads to the condition known as shock.

What causes shock?

- The heart failing
- Bleeding
- Vomiting and diarrhoea
- Burns Pain
- Trauma Infection
- Allergic reaction

A patient's physical injuries may not appear to be severe but may result in life-threatening consequences associated with shock.

If the volume of blood circulating around the body is reduced, the cells quickly become depleted of oxygen. This causes shock at the cellular level and produces the signs of shock in the whole body. This can be particularly serious in infants, children and the elderly. A spinal cord injury can also result in shock.

Immediately after an injury, there may be little evidence of shock. It is important that you treat the injury or illness which is causing the shock as well as treating the shock and the person as a whole.

Signs and Symptoms of Initial Shock

- Pale face, fingernails and lips
- Cold, clammy skin
- Faintness or dizziness
- Nausea

Anxiety

Signs and Symptoms of Severe Shock

- Restlessness
- Thirst
- Weak, rapid pulse
- Shallow, fast breathing
- Drowsiness, confusion or unconsciousness

Extremities become bluish in colour – this is a late sign and the person is very sick

If the patient has dark skin or skin colour is obscured due to severe burns, soot or face pain, check the colour of the skin on the inside of the lower eyelid or inside the lower lip.

Management of Shock

Follow DRSABCD and manage injuries such as severe bleeding.

Reassure the patient.

Call triple zero (000) for an ambulance.

Lay the patient with the head flat on the floor and raise the patient's legs (unless fractured or snake bite) above the level of the heart.

Treat any wound or burn and immobilise any fractures.

Loosen any tight clothing at the neck, chest and waist.

Maintain the patient's body warmth with a blanket or similar. DO NOT use any source of direct heat.

Give small amounts of clear fluid (preferably water) frequently to the conscious patient who does not have abdominal trauma and unlikely to require an

operation in the near future.

Monitor and record breathing, pulse and skin colour at regular intervals.

Place the patient in the recovery position if there is breathing difficulty, the patient becomes unconscious or is likely to vomit.

TRY NOT to leave a patient suffering from shock unattended – send someone else (if available) to make the call for the ambulance.

References:

<https://www.betterhealth.vic.gov.au/health/conditionsandtreatments/shock>

https://stjohn.org.au/assets/uploads/fact%20sheets/english/Fact%20sheets_shock.pdf

Next month: Burns

About St John Ambulance (NSW)

St John Ambulance (NSW) has been working with and making a difference in communities across NSW for over 135 years to save lives through first aid. Our vision is to have one person educated, equipped and prepared to provide first aid in every home, workplace and public gathering.

We are a self-funded, not-for-profit organisation which means our first aid courses and equipment help to fund our community programs. This profit-for-purpose approach allows us to reinvest back into community programs to help build a resilient and safer NSW.

Find out more at www.stjohnnsw.com.au or 1300 ST JOHN.



WEEDS AT WALLA WALLA

by Herb Simpfendorfer

You would remember that Ms Marsh achieved a height of 1.61m a month ago. I went back to her a few times since, and noticed a significant increase in her height. She is certainly a sprightly lady, and is now at the prime of her life. See photo showing her height is now 2.14 m., which is likely a NSW record, maybe even a noteworthy national achievement. And it all happened in the little township of Walla Walla. Ms March feels she can achieve even better, and that will be worth watching! "I'm not finished yet", was her cheerful comment. Stand aside, jarrah and kauri trees!

She fervently hopes the Council guy and his squirt machine stay away.

Bindii plants must be awfully close to coming out of the ground. Look for a tiny plant with fern shaped leaves. It is time for us all to be eagle eyed to stop them before they flower and set seed.

Hairy Panic is just emerg-



ing, and will be seen all over the town. At its start, it has two pointy leaves coming out of the ground.

Sticky Weed is still very active. It can be nearly two metres high if left to grow inside plants. Bridal Creeper is still growing nicely in some places.

BREAKING NEWS

For many readers, it would be of great interest to hear that I have seen the FIRST 2021 BINDII PLANTS in our area on Tuesday October 19th. I saw them at Culcairn, and took a photo. See right. A careful look at this photo can detect three tiny bindiis. My evaluation is their ages are (from oldest) two days, and the others one day. Most of the plants on the photo are hairy panic. Without a shadow of a doubt, bindiis will be up and about at Walla when this Newsletter gets to you, but despite my best efforts, I have not seen them here. Our ongoing annual battle with them is about to begin!





The College of **St. Paul's**

Whoever **you** are, whatever **your** story, **you're** welcome here with us.

The Blue Tree Project

You may have noticed when driving into Walla Walla from Morgan's Lookout/ Culcairn direction or if you are walking along the newly constructed Swamp Path that there is now a Blue Tree...

The project is an initiative supported by some of our Year 10 PDHPE students who assisted in applying to Mr Walkley for approval, and also securing donations from Bunnings for the paint and paint utensils as well as painting both the undercoat and the blue coat. It forms part of the bigger National Blue Tree Project.

The idea of the project, is to stimulate curiosity with the blue tree - and when people find out what it represents, to provide an opportunity for conversation - helping to break down the stigma around discussing mental health and accessing help. The theme of 'it's ok, to not be ok' is supported through a range of initiatives and we hope that our blue tree will provide our community with encouragement and opportunity for discussion.

For more information, please go to: <https://www.bluetreeproject.com.au/> There is also a QR code on the fence near the tree, which links to this website.



Pasture Demonstration Site

Alex Tier from Nutrien Ag Solutions and Liz Munn from S & W Seeds conducted a presentation to local farmers and agronomists about our St Paul's College Pasture Demonstration. We were fortunate to have students in attendance to listen and join in with the discussion about the different types of pastures availability and performance.

The trial site will include new pasture varieties each year and we look forward to having more field days in the future. The next field day will be in 2022, and a notification will be in the College Bulletin with a date and time. Everyone is welcome once COVID restrictions ease.



BUILDING FOR SUCCESS IN SCIENCE & TECHNOLOGY

St Paul's offers a diverse and varied range of Science and Technology subjects. Small class sizes allow for innovative approaches and individual guidance to students Science requirements.

2022 enrolments are still open

Day school alongside casual, weekly, or full-time boarding opportunities.

Enquiries please call (02) 6029 2200 or visit www.stpaulscollege.nsw.edu.au



**ST PAUL'S
COLLEGE**
WALLA WALLA, NSW

Walla Walla Public School News



The year 3-6 students have been busy in their creative arts lessons, studying various artists.

Photograms – Michael Riley and Mervyn Bishop

Both Michael and Mervyn were integral to the establishment of Australia's Indigenous photography movement. The Photograms allowed the students to explore the properties of light and how it is essential to photography. Students arranged objects from nature on light sensitive paper to create the photograms.

Today's LEARNERS, tomorrow's LEADERS

Narrbong (String Bags) – Lorraine Connelly-Northey

Students in Year 3-6 have been busy making string bags, inspired by Wiradjuri artist Lorraine Connelly-Northey. Lorraine Connelly-Northey uses cast-off materials to produce baskets and bag. Her use of metal, mesh and wire, in combination with feathers, shells and echidna quills, expresses an Indigenous history coexisting with a settler colonial society.



RWW GIANTS

Following on from the disappointing COVID end to the season, we were fortunate enough to be able to come together to celebrate the season at presentation on Saturday 9 October. It was pleasing to see our local home grown talent featuring in the main award winners on the day. A special mention to Sophia Kohlhausen who was awarded Club Person of the Year. Sophia took on many roles throughout the season, including coaching, umpiring and editing the critic for each home game.

Awards:

Grade	Best & Fairest	Runner Up
Seniors Football	Brian Lieschke	Nick Kohlhausen
Reserves Football	Lewis McRae	Nathan Wenke
U17s	Ben Hoffman	Jack Kotzur
U14s	Ed Kreutzberger	Josh Williams
Netball A	Sophia Kohlhausen	Jess Kotzur
Netball B	Lucy Trethowan	Caitlyn Wardius
Netball C	Morgan Schreiber	Kate Wiesner
Netball C Reserve	Bella Medcraft	Faith Pyers
Netball 17s	Nikita Clancy	Kate Webster
Netball 15s	Rori Kohlhausen	Alisha Van Deventer
Netball 13s	Priya Kohlhausen	Issy Kreutzberger
Netball 11s	Bree Hogan	Amelie Paech

Congratulations to all the winners.

A big thank you to all our local volunteers, our club would not be the success that it is without those that do the behind-the-scenes work. On behalf of the RWW Giants Committee, thank you.

Nic Odewahn

