

# THE JINDERA NEWS

FREE local Newsletter distributed by the first Saturday of each month (except January) published by:-



A Jindera based, not-for-profit charity organisation.

## Jindera Spring Fling!

Saturday 19th November 2022

Jindera Village Green  
11.00 am to 4.00 pm

*A day to reconnect and socialise with your community*

- ◆ Live Music in the Sound Shell—11.00 am to 4.00 pm
- ◆ Kids Kraft Korner— Spring Flower Making / Face Painting
- ◆ Snichols Giant Lawn Games
- ◆ Market Stalls
- ◆ Local Food Outlets Open—Next Level Café / Jindera Bakery / Museum



Daniel Tooze

Wagga based **Daniel Tooze** is currently working on his 4th independent album. Daniel's music is mellow & easy listening contemporary rock & folk. His music will surely touch the hearts of his listeners with his heartfelt song writing & atmospheric sound, heavily influenced by the likes of the Beatles, Pink Floyd, Supertramp & Neil Young to name a few.



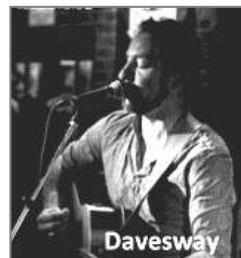
Miss Mikaila

Albury based Singer /Songwriter /Guitarist, **Miss Mikaila**, is explosive, in your face and honest! Dark and Quirky, yet Poppy and Up-tone, with a voice that turns heads and an intensity that brings down the room. Her songs are so catchy, you'll find yourself singing them for days. Currently promoting her debut album due for release early 2023.



Whiteline

Local Jindera Trio '**Whiteline**' have been delivering their music locally for 2 decades. Original Folk Rock ballads & classic covers, sometimes humorous, sometimes solemn, all served up with integrity, basted with a dash of blues & finished off with delicious vocal harmonies.



Davesway

Combining traditional folk influences, with today's looping technology **Dave** tackles the limitations of a solo performance, incorporating a mix of raw acoustic instruments and vocal harmonies. Every sound is recorded live. Maintaining the singer songwriter approach delivers a truly heartfelt performance.



North East Victoria locals '**The Memphis Trio with Eva Rosita**' will take you back in time with their 50's & 60's Rock'n'Roll and Rockabilly classics. Let's see if you can stop your toes from tapping!

BRING THE FAMILY

HAVE SOME LUNCH

MEET UP WITH  
YOUR NEIGHBOURS

ENJOY THE DAY!

Presented by..



Proudly Funded by





*We provide a safety net of kindness, consideration and support through:-*

**Jindera Opportunity Shop | Jindera Newsletter | Referral and Emergency Contact Office**

**Carers Support Group | Schools Grants Programmes | Critical Family Aid**

*We also provide support and resources for various local events and organisations:-*

**The Jindera Garage Sale | Seniors Week | Anzac Day Services | Jindera Pioneer Museum**

## **Rural Care Link Office**

### **Hours**

1.00pm to 5.00pm Monday to Thursday.

### **Safety Net—Help & Support**

We can provide basic food, clothing, and other financial and emotional support for local people in need.

We can help them to connect with other services and give support to help them navigate today's challenging systems.

As an agency for Albury Wodonga Food Share, we can access their Community Pantry Vouchers, and we can connect the aged and disadvantaged with local RSPCA volunteer services to help take care of their pets.

Phone for an appointment on **02 6026 3001** or text **0475 594 073** to find out how we may be able to help. Messages responded to promptly.

---

## **The Jindera News**

### **Your Opinion Matters!**

Rural Care Link Inc. is seeking to find out what the community want in our community newsletter.

Our current policy emphasises the importance of retaining and building bridges and bonds between people in our community as well as communicating the support that is available to people in need.

What do you think? Is this right? Have you other ideas?

Please email any comments to **office@ruralcarelink.org.au** or if you prefer, call the office on **6026 3001**.

The Jindera News is Published monthly (except January) by Rural Care Link Inc. All profits from advertising and donations are used to support the activities of Rural Care Link Inc.

Contributions and advertisements should be negotiated with and forwarded to the Editorial team at **jinderanews@ruralcarelink.org.au**

Alternatively, contact the Rural Care Link Inc. office on **02 6026 3001** or **0475 594 073**.

Please Note: The editorial team reserves the right not to publish any article or to modify the presentation to suit the style of the publication.

---

## **Carers Support Group**



### **Last Month's Activities**

During October and National Carer's Week the Jindera Rural Care Link Carer Group Members enjoyed some well earned recognition for their often forgotten role.

We had a lovely day out to the Cinema to see



“Ticket to Paradise”, and then dined at the Astor Hotel for Lunch.

Thanks to Rural Care Link, our local Carers, who each are 1 in 2.65 Million carers Australia wide, had some respite time to themselves, with the support and company of others in a similar role. We can definitely recommend the Movie and the Astor Hotel.

We were joined on the day by Leanne Mearns who is a Carer Advocate from “One Door” All Carers received a great gift bag full of useful goodies and treats. This added another special show of appreciation to our group members.

The Border Carer Reference Group held a Luncheon at the Commercial Club to Celebrate Carers and some of our Jindera group were also able to attend that. We enjoyed a Buffet Lunch provided by the Commercial Club and some very funny entertainment. One of our Jindera Carers won a lovely Raffle Prize.

### **If you care for someone....please reach out!**

We invite anyone from the Hume Shire Community who is in a Caring Role to attend. If you know someone who you feel would benefit from attending, please pass this information on to them.

You may not identify as a Carer but if you are looking after someone who is aged or has an illness or disability this group is for you.

Please join us for support, information, a friendly chat and Morning Tea.

We meet on the second Tuesday each month at various venues.

Please contact me if you would like any information on joining the Rural Care Link Carer Group. **Vickie Priscina, Carers Carelink Coordinator** on 0428 406 060.

---

## **Jindera Op Shop**

### **Hours**

10am to 4pm Tuesday to Friday, with lunch closure from 1pm to 1.45pm. Saturday open 10am to 1pm.

### **Current Bargains**

We are currently running a \$5 Bag Sale on Women's Clothing. This will continue until 12th November, so come on in and browse the Summer Stock that is being constantly donated.

Later in the month there will be other sales, but you'll need to pop in and see what other sales are happening!

### **Boomerang Bags**

Receiving great community support—\$1 each

## **We Now Have Eftpos Available!**



Yes!! We finally have an Eftpos terminal at our checkout.

No further need to go to the ATM and pay extra fees.

And don't forget you can purchase Boomerang Bags here as well!

---

## **Community Calendar**

Unfortunately, due to lack of entries, we have decided not to go ahead with this years Community Calendar.

We will return any entries we have received, back to the artists (or at least their school) as soon as possible, or feel free to pick up from RCL Office.



### **Assisting Families Workshops for Mental Health Carers**

Do you care for someone with mental health issues?

Would you like to learn more about supporting them?

### **Assisting Families with Finding Hope in Grief and Loss**

This module will provide an opportunity to understand how the concepts of grief and loss can apply to the role of a carer and to explore personal experiences of grief and loss with regard to being a carer of someone with a mental illness

Friday 25 November 2022

6.30 pm to 8.00 pm

Lutheran Church Hall

Adams Street, Jindera

### **BOOKINGS ARE ESSENTIAL**

For more information or to register please contact your local Carer Advocate:

**LEEANNE MEARNS** Phone: 0488 288 707 or

**Email:** leeanne.mearns@onedoor.org.au



### **Market Stall Registrations are still open!**

If you would like to have a Market Stall at the 'Spring Fling' on Saturday 19th November 2022, please email office@ruralcarelink.org.au for your Application Form.

ANGLICAN PARISH OF NORTHERN ALBURY

St. Paul's Jindera  
Sundays - 10.00 am

Priest - The Rev'd Emily Payne  
mobile : 0408 666 119  
Parish office: 6040 6457

email: vicarnorthernalbury@gmail.com  
website: www.anglicannorthernalbury.org. au

BURRUMBUTTOCK  
LUTHERAN PARISH



*Growing Where We are Planted*

**Sunday Worship Service Times**

**Bethlehem Jindera 9am**

Adams Street, Jindera

Trinity Bethel, Holy Cross Burrumbuttock  
and St Peter's Gerogery: please check our  
website for worship times

<https://burrumbuttock-parish.lutheran.org.au>

Contact: Pr Christian Fandrich 0457 841 123

Gateway  
LIFE CHURCH



LIVE  
SUNDAYS

10AM GATEWAY ONLINE

11.30AM VIRTUAL FOYER

12PM SWAHILI SUNDAY



[Facebook.com/GatewayLifeChurch](https://Facebook.com/GatewayLifeChurch)



**BE COVID SAFE ✓**

**Wear A Mask - Wash Hands  
Social Distance**

**St. Mary's Catholic  
Church, Jindera.**

Parish Priest – Fr. P. Murphy  
Assistant Priest – Fr. C. Heffernan

**MASS TIMES**

9.00am Sundays and 9.20am Fridays  
during School Terms

*Confessions available before Mass.*

You're welcome at

**Lavington  
Baptist  
Church**

Youth Group- 13 years +  
7:30 - 9:30pm

Good News Club 9 -12 years  
6 - 7:30pm

Sparks 4 - 8 yrs  
6 - 7:30pm



[www.lavingtonbaptistchurch.com](http://www.lavingtonbaptistchurch.com)

Friday Nights during school terms  
450 Parnall St. Lavington  
TEL (02) 60 215860

**JINDER NEWS - CONTACT US ON: [jinderanews@ruralcarelink.org.au](mailto:jinderanews@ruralcarelink.org.au)**



# Jindera Pool News

Ready for the ultimate ice bucket challenge??

**The Jindera Swimming Pool is due to open THIS weekend  
Saturday the 5<sup>th</sup> November!**

Last year we could have skated on the pool the weekend it opened!!

This year – the estimated 18 degrees has been upgraded to 22 degrees and sunny!

2 NOV	3 NOV	4 NOV	5 NOV
<b>Wednesday</b> Possible shower	<b>Thursday</b> Possible shower	<b>Friday</b> Mostly sunny	<b>Saturday</b> Mostly sunny
15°C	16°C	19°C	22°C
5°C	6°C	5°C	6°C
☁ 60% < 1mm	☁ 50% < 1mm	☁ 10% < 1mm	☁ 20% < 1mm

In the lead-up to the opening, the ultimate challenge will be whether the solar combined with the pool covers can achieve a good temperature for swimming. For those who are new to Jindera, the new solar and pool covers were purchased thanks to the NSW Stronger Communities Grant and have served us well in keeping our pool a lovely 26-28 degrees throughout the season.

You may have noticed some activity at the pool over the winter months. Council have been busy trying to rectify the sinking of the pool. With all the wet weather we have been having, this has proved a bigger challenge than originally anticipated, but we have been assured that the pool will open as advertised on the 5<sup>th</sup> November.

## Aqua Aerobics once again to be held-

Tuesday and Thursday: 6.15pm – 7.00pm with Allana Hayes\*

Wednesday and Friday: 3.00pm – 4.00pm with Ruth Dunn

\*Please check Allana's Facebook site for when group will commence.

*We're sure that you are all keen to get back your bikini bodies.* 😊

## Jindera Pool Times and Dates (phone 6026 3900)

Start Date	End Date	Monday to Thursday	Friday	Saturday	Sunday	
Sat 05/11/2022	Sun 11/12/2022	3:00 - 7:00	3:00 - 8:00	1:00 - 8:00	1:00 - 7:00	Closed Mondays
Mon 12/12/2022	Sun 22/1/2023	1:00 - 7:00	1:00 - 8:00	1:00 - 8:00	1:00 - 7:00	Open 7 days
Mon 23/1/2023	Sun 12/3/2023	3:00 - 7:00	3:00 - 8:00	1:00 - 8:00	1:00 - 7:00	Closed Mondays

Morning swims at Jindera are held from 6:00 am to 7:00 am Tuesday to Friday (Dec to Feb).

**Kiosk: We welcome Lorraine and Narelle who will be running the kiosk this year.**

**Please note that the kiosk will be open from the 2<sup>nd</sup> weekend of the season.**

Last year the Pool Committee ran a **Floating Cinema** featuring the movie Moana, which was once again a successful community event. This is our major fund raiser for the season.

This year, we plan to run **TWO MOVIES over TWO NIGHTS:**

- ★ One for teens (and those who think they are still teens ), and
- ★ One for families with young children.

Put these dates in your diaries – **Friday 20<sup>th</sup> and Saturday 21<sup>st</sup> January!**

Please leave any movie ideas at the kiosk (suggestion boxes) or post them on the pool's Facebook site.

*We look forward to another successful year.*

**The Jindera Pool Committee**




## Justin Clancy MP

MEMBER FOR ALBURY

02 6021 3042 | albury@parliament.nsw.gov.au | justinclancy.com.au | Authorised by Justin Clancy and produced using Parliamentary Entitlements.



A new committee has formed to take on the role of fundraiser for the new Jindera Multi-Purpose Hall—the original committee having formed in 2002.

The previous committee needs to be acknowledged for the fundraising they have done in the past, and their continual promotion of the concept in conjunction with Council staff and individual Councillors.

Moving forward now, there is a concerted effort to raise enough funds to prove to the Council that Jindera is serious about a new hall facility, and to prove that the wider community, and outside entities, will utilise the hall.

The project will necessitate the application for grant money, however, this will not be an option until the community raise enough funds to start the project moving.



There will be a series of activities within the community which will help raise funds—the first was a **cake stall** held in September; in the next weeks there is a theatrical presentation in the “**Spider’s Web**” being presented at the Jindera School of Arts (Hall) on November 4-5 and

11-12 (bookings via Trybooking); and also currently there is another **raffle** being held for cash prizes which will be drawn at the Jindera Carols Evening on 16th December (tickets available at the Jindera Post Office, NA Auto, and in front of the Jindera IGA on selected Saturday mornings).



The new year will see another mix of activities which are designed to engage families—adults, teens and children.

Please support the committee as they strive to make this dream a reality, giving the community an impressive facility which can be utilised for many events and functions, both regular and individual.

### Multi-Purpose Hall Raffle Winners (held Saturday 24th September)

#### PRIZE

- 1<sup>st</sup> \$150 voucher *from La Maison*
- 2<sup>nd</sup> 3 bottles of wine and chocolates *donated by IGA*
- 3<sup>rd</sup> 3 bottles of wine and chocolates *donated by IGA*
- 4<sup>th</sup> \$25 voucher *Commercial Club* + \$25 voucher *The Brewhouse*
- 5<sup>th</sup> Chocolates *donated by IGA*

#### WINNER

- Alison Jafari
- Betty Challoner
- Rob from Mick’s Tree Care
- Mary-Lynne Hayes
- Greg Adams



*Thank you to everyone who supported this raffle which raised \$1500 and especially to our sponsors.*

**Do you have an event you would like added to the  
Jindera Community Diary  
CONTACT US ON: [jinderanews@ruralcarelink.org.au](mailto:jinderanews@ruralcarelink.org.au)**

# AROUND THE TOWN UPDATE

with  
Cr. Jenny O'Neill



## Jindera Adventure Playground

Comments about the playground closed last Wednesday. Council will consider these when choosing the preferred design. Please be aware that this is going to be an ongoing project with other items added as more money is available. Six companies were given a brief containing certain necessary elements to be included in any design and the amount of money available for the project. The design will be presented to the November council meeting so construction can begin in the new year.

## Local Government Conference


The Mayor, two Councillors and the General Manager attended the Local Government NSW conference last week. All council areas in NSW were represented. It was very informative and useful in learning how the rest of the state functions. Greater Hume is definitely not alone especially when it comes to roads and infrastructure. Some areas didn't have delegates because they were dealing with intensive flooding in their regions.

## Fox and Brew possible future opening

A little birdy told me that the Fox and Brew are aiming for the end of January to reopen... supply issues notwithstanding.  
*Perhaps the race will be on between the Post Office and Fox and Brew!*

## New path to Pomegranate Estate

A new path has been approved by Council to be built on the northern side of Dight's Forest Road between Mitchell St and Goulburn St. This will connect with the existing path and make it safer to walk through to Pomegranate Estate without having to go on the side of the road.

Jindera Community Diary					NOVEMBER 2022	
SUNDAY	MONDAY	TUESDAY	WEDNESDAY	THURSDAY	FRIDAY	SATURDAY
		<b>1</b> <u>Sit "n" Knit</u> Ladies Knitting Group Jindera Hub Library 10.00am	<b>2</b> <u>Social Tennis</u> – JTC - 7.00pm <u>Jindera Golf Club</u> Vets – 8.30am	<b>3</b> <u>Jindera Golf Club</u> Ladies – 8.30am	<b>4</b> <u>Gentle Exercise Class</u> Jindera HUB – 10.00am <u>Jindera Anglers Club</u> 5.00pm <u>Jindera Golf Club</u> Chook Run – 3.30 pm	<b>5</b> <u>Jindera Swimming Pool - OPENS</u>
<b>6</b> <u>Jindera Blokes Walk</u> – Jindera Oval - 7.45am <u>Jindera Museum</u> <u>Tearooms</u> - 11am to 4pm <u>Jindera Craft Shop</u> – 11.00am - 2.00pm <u>Jindera Golf Club</u> - Sunday Comp. - 8.30am	<b>7</b>	<b>8</b> <u>Sit "n" Knit</u> Ladies Knitting Group Jindera Hub Library 10.00am	<b>9</b> <u>Social Tennis</u> – JTC - 7.00pm <u>Jindera Golf Club</u> Vets – 8.30am	<b>10</b> <u>Jindera Golf Club</u> Ladies – 8.30am	<b>11</b> <u>Remembrance Day</u> - 11am <u>Gentle Exercise Class</u> Jindera HUB – 10.00am <u>Jindera Anglers Club</u> 5.00pm <u>Jindera Golf Club</u> Chook Run – 3.30 pm	<b>12</b>
<b>13</b> <u>Jindera Blokes Walk</u> – Jindera Oval - 7.45am <u>Jindera Museum</u> <u>Tearooms</u> - 11am to 4pm <u>Jindera Craft Shop</u> – 11.00am - 2.00pm <u>Jindera Golf Club</u> - Sunday Comp. - 8.30am	<b>14</b> <u>Museum Meeting</u> - School of Arts Hall - 7.30pm	<b>15</b> <u>Carers Support Group</u> Lutheran Church Hall <u>Sit "n" Knit</u> Ladies Knitting Group Jindera Hub Library 10.00am	<b>16</b> <u>Jindera Golf Club</u> Vets – 8.30am <u>Social Tennis</u> – JTC - 7.00pm	<b>17</b> <u>Jindera Golf Club</u> Ladies – 8.30am	<b>18</b> <u>Culcairn Street Party</u> Culcairn 5.00pm-8.00pm <u>Jindera Golf Club</u> Chook Run – 3.30 pm	<b>19</b> <u>Spring Fling</u> Jindera Village Green 11am - 4pm
<b>20</b> <u>Jindera Blokes Walk</u> – Jindera Oval - 7.45am <u>Jindera Museum</u> <u>Tearooms</u> - 11am to 4pm <u>Jindera Craft Shop</u> – 11.00am - 2.00pm <u>Jindera Golf Club</u> - Sunday Comp. - 8.30am	<b>21</b>	<b>22</b> <u>Sit "n" Knit</u> Ladies Knitting Group Jindera Hub Library 10.00am	<b>23</b> <u>Jindera Golf Club</u> Vets – 8.30am <u>Social Tennis</u> – JTC - 7.00pm	<b>24</b> <u>Jindera Golf Club</u> Ladies – 8.30am	<b>25</b> <u>Jindera Anglers Club</u> – 5.00pm <u>Gentle Exercise Class</u> Jindera HUB – 10.00am <u>Jindera Golf Club</u> Chook Run – 3.30 pm	<b>26</b>
<b>27</b> <u>Jindera Blokes Walk</u> – Jindera Oval - 7.45am <u>Jindera Museum</u> <u>Tearooms</u> - 11am to 4pm <u>Jindera Craft Shop</u> – 11.00am - 2.00pm <u>Jindera Golf Club</u> - Sunday Comp. - 8.30am	<b>29</b>	<b>30</b> <u>Sit "n" Knit</u> Ladies Knitting Group - Jindera Hub Library 10.00am	<b>1 Dec</b> <u>24 Days to Christmas</u> 			





One of the things that makes St John's unique is our focus on Project Based Learning (PBL). Each term, our students dive deeply into a current issue and use their creative thinking skills to develop possible solution/s to the issue. In tandem with this, our students engage in Design Lab lessons, where they are encouraged to develop their innovation and design skills in many different contexts. We are so proud of our students, and the hard work that they put into their PBL units. The culmination of each PBL unit is a showcase, where they share their learning in many different ways. Here is a sample of the Driving Question and showcase for each class group in Term 3:

**Kindergarten:** Our driving question was "How can we make our classroom feel like a place that is special to each of us?". Our kinders presented so many varied ideas to solve this problem such as creating teddy bears, art galleries and even a rainbow wall for when we are feeling a little down!



**Year One:** Our driving question was 'How can we share stories about our favourite place?' We worked very hard to research about our favourite place and designed information posters and Canva (online) presentations.

**Year Two:** Our driving question was "How can we tell our stories through all forms of Literacy that has the social impact to inspire others?" Our showcase showed all of the conversations and re-research that we did for something that is important to us. Some students shared stories of their great-great grandparents' involvement in World War one and two, others shared about their own journeys from overseas to Australia, and we even had stories about the benefits of colouring in to help with mindfulness!





**Year 3/4:** We used our overnight camp to the Melbourne Zoo to come up with our driving question "How can we as ethical consumers make a positive impact on endangered animal populations throughout the world?"



**Year 5/6:** How can we as innovators provide opportunities for students at our school to learn about sustainable farming? Our PBL unit concluded with the St John's Field Day, where we dressed up as farmers and presented our area of research. We even had sheep, chickens and a duck at school for the day!



# RECEIVE

## THE JINDER A NEWS

# BY EMAIL

JUST SEND A REQUEST TO

[jinderanews@ruralcarelink.org.au](mailto:jinderanews@ruralcarelink.org.au)

The Jindera News will be sent to the email address noted as the sender in your email.

Contact Rachel:  
0407 122 732  
rachel@flowermilljindera.com.au



Book an appointment to visit our studio or find our fresh flowers daily at the Next Level Cafe in Jindera

www.flowermilljindera.com.au

## JINDERA COTTAGE CRAFT SHOP



*Christmas is coming and we have some lovely hand crafted items in the shop.*

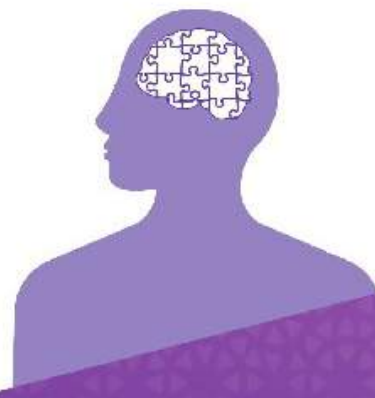
Gifts for all occasions, by purchasing a gift you are supporting a local craftsperson.

EPTPOS now available.

AGM will be on Thursday 17 November 1.00pm at the shop.

Open every **Sunday from 11am until 2pm** and **Saturdays in December.**

***If the flags are out we are open!***



## Assisting Families Workshops for Mental Health Carers

- Do you care for someone with mental health issues?
- Would you like to learn more about supporting them?

### Assisting Families with Finding Hope in Grief and Loss

This module will provide an opportunity to understand how the concepts of grief and loss can apply to the role of a carer and to explore personal experiences of grief and loss with regard to being a carer of someone with a mental illness

**Friday 25 November 2022**

**6.30 pm to 8.00 pm**

**Lutheran Church Hall**

**Adams Street, Jindera**

**Open to anyone in the Community who this may assist**

**No Cost**

**Supper Provided**

#### BOOKINGS ARE ESSENTIAL

For more information or to register please contact your local Carer Advocate:

**LEEANNE MEARNS**

**Phone: 0488 288 707 or Email: leeanne.mearns@onedoor.org.au**

We are a **FREE / NO COST** Service

**Phone: 1800 THE KEY (843 539) or visit: onedoor.org.au**



Mental Health Program 2022  
A NSW Health funded program

## Friends in Action (Caritas) Diary:

2022

*A Group that can offer emotional and spiritual support and opportunity for growth through caring and personal relationships.*

With adhering to Covid-19, Rules and what we can do, check out email notices, please.

**9<sup>th</sup> Nov**

### **Chiltern**

Meeting at St Paul's Jindera at 9 am.

**Morning tea:** 10am at Chiltern Bakery.

(Time for a wander around the main street).

**12pm Tour** of Lake View National Trust House on the Lake.

(Home of HH Richardson, novelist). \$4 cost.

**Lunch:** 1pm Bird & Bike Café..

**Contact:** Pam; 0438 020 234.

***Friendship in Action***



# JINDERA TYRE SERVICE

129 URANA STREET JINDERA 02 6026 3400

GOODYEAR

**DUNLOP**  
SUPER DEALER

MAXXIS

**MICKEY THOMPSON**  
PERFORMANCE  
M/T.  
TIRES & WHEELS



**KUMHO TYRE**  
*Better. All-ways*

## OFFICIAL SUPPLIERS

*Jindera Community*

# Christmas Carols

**FRIDAY 16TH DECEMBER**

**7:30PM**

## JANDERA VALLAGE GREEN

ALL WELCOME

Food available from 6:30pm

Special Guest Performances

Meet up with Neighbours

School Performances

FREE Glo candles

Bring the whole family

This is an Alcohol Free Event

Brought to you by the Joint Ecumenical Churches of Jindera

# Bank Brighter.

[humbank.com.au/bankbrighter](http://humbank.com.au/bankbrighter)

**Hume Bank**



**JINDERA THEATRICAL SOCIETY  
PRESENTS...**

# **SPIDER'S WEB**

*Agatha  
Christie*

**4TH-12TH NOVEMBER**

**Jindera School of Arts Hall**

**Fridays and Saturdays 7:30PM**

**Saturdays 1PM Matinee**



Adults..... \$18

Children and Conc...\$10

Families.....\$50

[www.trybooking.com/CDICD](http://www.trybooking.com/CDICD)



**Find us on facebook**

*By arrangement with ORIGIN<sup>TM</sup> Theatrical on Behalf of Samuel French  
A Concord Theatricals Company*



## Jindera 'School of Arts' Hall Committee

On the 11th of October the Jindera School of Arts hall committee held its Annual General Meeting, which was well attended by members of the local community. President of the committee, Elizabeth Bowran thanked all in attendance for their support and spoke about some of the challenges the hall had faced over the last couple of years and what we could do to address these challenges in the future. Elizabeth announced her resignation from the role and was given a vote of thanks for her dutiful service as President since her election in 2013. Lee Howard also stepped down from her role as Secretary and, likewise, received a vote of thanks for her years of service.

Elections were held to fill these positions, wherein I, Kieran Williams was elected as the new President; Michael Green as the Vice-President; and Olivia Hanel was re-elected as Treasurer and Secretary. In addition, there were five other General Committee Members elected. There was some great discussion about the history of the hall since its founding in 1910, and its continuing place in the community. There was agreement that it holds great significance for the town and that an effort should be made to maintain and preserve the building.

As President I believe the future of the School of Arts Hall is bright. In January this year, I took my young children to a holiday activity organised by Rural Care Link, held in the hall. It was the first time I had ever set foot in there, and I was immediately struck by the quaint, historic feel of the place. Since then I have directed a play with Saint Mary MacKillop College (*The Mouse-trap*) and am directing a second (*Spider's Web*) with Jin-



dera Theatrical Society this November. If you have not yet been in the hall, or if it has been a while since you were last there, please come and support the show and appreciate the wonderful atmosphere in a building like the School of Arts Hall.

The new committee and I are excited to explore a range of initiatives for the hall over the next 12 months. Of note, is that of monthly film nights, which could help to raise money for the new "Multi-Purpose Hall" in Jindera. We are hoping to give this idea a test-run in late November/early December. Also under consideration, are dances, trivia nights, a range of social clubs and hopefully, more plays!

My hope is that the Jindera School of Arts Hall will help to build a stronger, more connected local community, by providing some great social events right here in Jindera. Expect to see more happening at the hall this year!



### Jindera Village Post Office

For postal information and product specials

Bank with over 70 banks and financial institutions

Phone:  
6026 3201



Wattos Garden Supplies  
1 Jarick Way

Jindera Industrial Estate

Earthworks now Available

We also offer Deliveries

**0448 600 433**

# CULCAIRN STREET PARTY

FRIDAY 18<sup>th</sup> NOVEMBER 5-9pm

Momentum is now gathering as we move towards this major event in our town. With over 30 market stalls already booked, food and entertainment secured, balloons ordered and fireworks organised, we are certain to have a great night where the community can come together to celebrate.

Our Street Party has been made possible through the Reconnecting Regional NSW – Community Events Program which aims to boost tourism, facilitate economic recovery and create social opportunities in rural/regional communities, especially following COVID.

Our Culcairn Community Development Committee applied for a grant earlier this year and was very excited to receive approval. It is now a matter of coordinating all the various parts so it comes together on the night.

We trust that everyone will put **FRIDAY 18<sup>th</sup> NOVEMBER** in their diaries so they can join in the fun between 5pm and 9pm in our main street. Remember to also invite friends and family to join us in the festivities. It will definitely be a case of “the more the merrier”..... and with Christmas approaching it will be an opportune time to buy a few gifts!!!

If anyone would like to have a market stall (or knows someone who does) please email our committee at [culcairnstreetparty@outlook.com](mailto:culcairnstreetparty@outlook.com) so we can send you a registration form.

Applications close the week before the event so we have time to plan sites.

Looking forward to a fantastic night and hope to see lots of people there.



**Jindera News would love to hear from you if you have any news of interest to our local community!**

Please email your article to [jinderanews@ruralcarelink.org.au](mailto:jinderanews@ruralcarelink.org.au) or to Rural Care Link, The Jindera Hub, Urana Street, Jindera

## Proficient Home & Yard MAINTENANCE

Allen Davison  
**0473 386 371**

Servicing Albury / Wodonga and surrounds.

**No Job too Big or Small  
All inquiries Welcome**

**Local Jindera Business!**

# EQUIP

**OCCUPATIONAL THERAPY**

**Alison Viedt**

**0427 263 398**

[alison@equipoccupationaltherapy.com](mailto:alison@equipoccupationaltherapy.com)



## SUSSAN LEY

FEDERAL MEMBER FOR **FARRER**

*Putting Farrer First*

As your local Federal MP, my job is to represent, help and speak up in your interests.

You may also need specific assistance in areas such as social welfare, family law, immigration or taxation, through to postal, phone or internet services.

Can I help with an employment issue, housing, health or education...perhaps you just want to offer an opinion?

Whatever you need help with, please don't hesitate to get in touch through any of the below contact options.



517 Kiewa Street, Albury NSW 2640



02 6021 3264



[farrer@aph.gov.au](mailto:farrer@aph.gov.au)



[sussanley.com](http://sussanley.com)



[SussanLeyMP](#)

Authorized by Sussan Ley MP, Liberal Party of Australia, 517 Kiewa Street, Albury NSW 2640.





## THE BENEFITS OF VOLUNTEERING WITH **LIFELINE ALBURY WODONGA**

- ✓ **Meet new people**  
Our local volunteers are a tight-knit group who are passionate about helping their local community - and have a great time doing it!
- ✓ **Connection with local community**  
Volunteering is a great way to build connections with like-minded people whilst contributing to achieve Lifeline's vision of an Australia free from suicide.
- ✓ **Improve your health**  
Volunteering has been shown to positively impact your mental and physical wellbeing!
- ✓ **Make a real difference**  
Our drivers, balers, sorters and retail volunteers play a vital role in ensuring our work can continue.
- ✓ **Learn new skills**  
When you volunteer for Lifeline, you gain valuable skills.

### TO LEARN MORE

CALL OR TEXT SHAREE ON  
0418 690 336

EMAIL US  
ADMIN.AW@LIFELINE.ORG.AU

OR DROP INTO OUR  
LIFELINE STORES TO  
HAVE A CHAT!



## **TerryWhite Chemmart.**

Jindera TerryWhite Chemmart Pharmacy

Shop 4&5, 82 Urana Street, Jindera, NSW 2642

### OPEN

Monday-Friday: 9.00am to 5.30pm

Saturday: 9.00am to 12 noon

### -- OFFERING --

- ◆ Health Risk Screening Services
- ◆ National Diabetes Services Scheme
- ◆ Webstar packing
- ◆ Spotcheck (Skin Cancer Screening Programme)
- ◆ Wide range of vitamins
- ◆ MedsCheck
- ◆ Free Blood Pressure Testing
- ◆ Baby Products
- ◆ Home Health Care Aids
- ◆ Giftware
- ◆ Natio Ski Care range
- ◆ Chemmarts Reward Programme

Phone (02) 6026 3271

Fax: (02) 6026 3935

Email: Jindera@chemmartpharmacy.com.au



**TerryWhite Chemmart.**



**Plumbers, Drainers & Gasfitters**  
**Bobcats, Excavators, Tippers & Trenchers**  
**Farm Water Supply**  
**Reticulation, Trenching**  
**Troughs, Tanks & Solar Pumps**  
**Septic Systems**  
**Septic & Trade Waste Pumping**  
**Sand & Gravel Cartage**  
**Grader & Water Cart Hire**

**If you want to dig it, pipe it, pump  
it or fix it – we can do it!**

**Mobile: 0403 191 780**  
**www.blueysplumbin.com.au**





# JINDERA PUBLIC SCHOOL

## Grandparents/Special Person's Day, Book Week and Book Fair

The theme for Book Week 2022 was "Dreaming with eyes open..." and the children at Jindera Public School were able to participate in a range of activities promoting a life-long love of reading and literature. The school took the opportunity to invite our Grandparents and Special people to our school where students read with their family and friends in their classrooms. This was followed by a performance by our Dance Group and then students and staff participated in a Book Week Parade.

We finished the event with afternoon tea and the announcement of our Bake a Book competition and the opening of a Book Fair, where people were able to purchase books. All money raised during the day we dedicated to the purchase of supplies and resources for use in our recently renovated library space. It was wonderful to see so many of our families and friends come together to celebrate our student's learning and literature. Thank you to the many people who donated baked goods and purchased book.





## Celebrating 100 years of Country Women Association in Australia

Students from our Kindergarten to Year Two classes were privileged to be a part of the celebration of the 100th Anniversary of the CWA in Australia at the local Jindera Pioneer Museum. This was a chance for students to learn about the CWA and the significant contribution that they have made to Australian culture during this time. The student's participated in lots of activities relating to past pioneer days such as spinning wheels and sewing machine. The branch women had lots of interesting activities for children to participate in. This included things relating to the past pioneer days such as spinning wheel and sewing machine demonstrations, washing clothes with a washing board, cooking with a wood stove (samples provided), chopping wood, basket weaving, knitting and crocheting, billy cart racing, water pumping, kit making and other games.

## Wirraminna Environmental Centre Excursion

Our K-2 students had an active day at the Wirraminna Environmental Centre.



## KINDERGARTEN ENROLMENTS NOW OPEN



Jindera Public School welcomes families wishing to enrol their child in Kindergarten.

*Before and After School Care available.*

Please contact our front office for more information: 0260 263280



*Jindera Public School, where every child is known, valued and cared for every day.*

## Jindera Juniors Transition Program

RESPECT



RELATIONSHIPS

RESILIENCE

We are pleased to announce our key dates for families of enrolled students joining our Kindergarten class in 2023.

### JOIN US ON THE FOLLOWING DATES AND TIMES

Every Friday beginning on Friday -21st October to Friday 11th November from 1.30pm-3.15pm

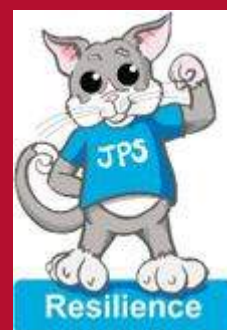
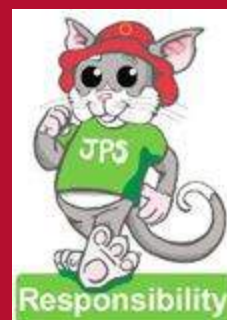
Friday-18th November & Friday 25th November from 10am-2.45pm

These sessions will allow your child to familiarise themselves with our school staff and our beautiful school setting.



# SNAPSHOTS

## OF LEARNING AND FUN



Persevere  
with sincerity.





## NURTURING YOU TO EXCEL

Our curriculum at St Paul's is unique, diverse and engaging. Our students have the opportunity to experience programs such as Equine, Agriculture, and Boarding.

**"The care and positive nature of the school is genuine, giving us peace of mind as parents of high school kids." - Parent of St Paul's.**

## EXPRESSIONS OF INTEREST FOR 2024 ENROLMENTS NOW OPEN

Daily bus - Albury & Thurgoona  
Weekly bus - Wagga, Jerilderie & Berrigan



Please visit [www.stpaulscollege.nsw.edu.au](http://www.stpaulscollege.nsw.edu.au)  
to register your interest or call (02) 6029 2200



**ST PAUL'S  
COLLEGE**  
WALLA WALLA, NSW

## Jindera CWA News

**November 2022**

All positions were filled at Jindera CWA Annual General Meeting on 5<sup>th</sup> October, for 2023.

- President – Christine McIntyre,
- Secretary – Olivia Hanel,
- Treasurer – Denice Murphy,
- International – Heather Collis,
- Handicraft – Maryan Jenkins,
- Cookery – Carol Laidlaw
- Ag/Environment – Helen Palmer,
- Cultural – Marie Leddin
- Publicity – Bev. Blair
- Vice Presidents – Helen Glachan/Bev. Blair

Seven members attended the Murray Group Annual General Meeting at Albury CWA rooms on 20<sup>th</sup> October. Two members from Jindera were voted in to positions: Margaret McMaster – Cultural and Bev. Blair – Publicity. Murray Group President for 2023 is Elaine Strong from Little Billabong Branch.

It was a pleasant surprise when Jindera CWA Branch was awarded the **RITA ROSS TROPHY** for **THE MOST ACTIVE BRANCH OVER THE PAST TWELVE MONTHS**

**A sterling effort and a BIG THANKYOU to all Jindera members who contributed to this award.**

Following the Group AGM, members gathered at Gertrude Colquhoun Park in Albury for the planting of an ACER TREE to commemorate 100 years of CWA – NSW. Outgoing President Lyn Buck organised the planting with Albury Parks and Gardens. Longest serving members from the eight Murray Group branches placed a scoop of soil around the tree. Olivia Hanel and Helen Glachan represented Jindera.

December meeting will be our Christmas breakup.

Yours in CWA friendship.  
**BEV. BLAIR.** - Publicity Officer.



L-R **Rita Bowler**  
(granddaughter of Rita Ross)  
presents the Rita Ross Trophy  
to incoming CWA President,  
Christine McIntyre and past  
President Bev. Blair.

**You will save stacks of money when you shop locally in Jindera.**





# JINDERA

## • PIONEER MUSEUM •

### Museum planning for Forgotten Trades Festival

The Jindera Pioneer Museum is gearing up for its next major event which will be held on **February 26** next year.

The Forgotten Trades Festival invites visitors to take a step back into the magic of yesteryear and discover long forgotten trades and craftsmanship.

The event will showcase a variety of skills and practices that many may not have seen for decades. The museum is current seeking registrations from exhibitors and stall holders.

On the day visitors can witness some rarely seen skills in action with men and women at work showcasing some long-held crafts. These can include, but are not limited to, shingle making, blacksmithing, knife craft, shoe making, stone masonry, dry stone walling, harness restoration and furniture construction.

The Forgotten Trades Festival is sure to be an eye opener for old and young alike and a great opportunity to share with the family an insight into the bygone ways of bygone days.

The full program is continually developing and other events are expected to be added to this wonderful day.

Many readers will know that Margie (President) and Brian are on a well-deserved holiday break at the moment after a very busy year at the museum. In their final weeks there were several private events held at the museum along with the hugely popular Spring High Tea.

Around 80 guests enjoyed a rare sunny day in the grounds. As always, the event sold out quickly and the weather gods delivered a lovely day. Cakes, slices and gourmet goodies were the order of the day and there wasn't a crumb left at the finish!

A reminder that the museum tea rooms are open every Sunday and will also be open on the day of the **Jindera Spring Fling on November 19**.

Another date to mark in your diary are the **Christmas Wreath Making Workshops** (there will be three) set for **December 11** this year. Keep your eye on the museum Facebook page for when tickets will be available (approximately mid-November).

We are pleased to have received visitation from various local schools recently including St Patrick's Albury, Aspect Riverina School and Holy Spirit.

The museum is open until 4pm daily. Follow us on Facebook or visit [www.jinderamuseum.com.au](http://www.jinderamuseum.com.au) or call 0408 409 842 for more information.

*Margie Wehner*

President  
Jindera Pioneer Museum & Historical Society Inc.



*Bygone ways of bygone days  
will be showcased at the  
Jindera Museum at  
the Forgotten Trades Festival  
to be held on  
26th February 2023.*

## Experience the Pioneer Lifestyle

Set on 2 acres, featuring multiple dwellings and beautiful gardens, we welcome you to come take a trip back to life 150 years ago



## JINDERA

### • PIONEER MUSEUM •

**OPEN from**

**10am - 4pm every day**


(October to April)

Tea Room Open every Sunday from 11am

[www.jinderamuseum.com.au](http://www.jinderamuseum.com.au)

118 Urana Street, Jindera, NSW

P: 0408 409 842

 JinderaPioneerMuseum



*Do you know someone who would benefit from having a homecooked meal?*



Pick up or delivered Call 0421 706 578

***Get your meals sorted for the week!***

Meal packs are now available to order  
We have a meal pack to suit every lifestyle  
Healthy & cooked fresh, ready to heat & eat

Easy online ordering

[www.dotskitchens.com](http://www.dotskitchens.com)

to see our menu & order

Or call us on 0412 706 578



**NA Auto**  
AUTOMOTIVE ELECTRICAL  
SPARE PARTS AND ACCESSORIES

Neil and Kathy Anderson  
94-96 Urana Street PO Box 27 Jindera NSW 2642  
Ph: 02 6026 3391 Fax: 02 6026 3722 Mob: 0428 578 061  
Email: [sales@naauto.biz](mailto:sales@naauto.biz) Website: [www.naauto.biz](http://www.naauto.biz)

JINDERA HAIR HEALTH & BEAUTY

**TEL: 02 6026 3434**

91 Urana Street, Jindera



St Paul's Anglican Ladies Knitting Group

## Sit "n" Knit

**Tuesday 10.00 to 11.30am**

**Jindera Community Hub Library**

Join us to knit for a charity or bring  
your own knitting project

(if you can't knit we'll show you)

*All Welcome*



for more information phone 0400 424 437

## BLD Machining

**CNC MACHINING  
FABRICATION & WELDING**

**Precision:**

Milling, Boring & Screwcutting,  
Repairs, Maintenance & Modifications  
to all plant & equipment

***Guaranteed fast and professional service.***

Phone Bruce:

**0448 790 666**

6 BEGG DRIVE, JINDERA

***Fixing the old and broken, designing  
and manufacturing the new!***





# Jindera Community Garden

We are a social group who are creating a garden for EVERYONE to enjoy. Check our news on Facebook, and read *here* each month for updates. If anyone has ideas or suggestions, please let us know.

Phone or Message Eileen White—0400 023 290 or email [jinderacommunitygarden@gmail.com](mailto:jinderacommunitygarden@gmail.com).

## Cake Stall

**IGA - 8am - 12th November**



### Jindera Community Garden

## CAKE STALL



**November SAT. 12th IGA**

- \* **CAKES**
- \* **PLANTS**
- \* **MEMBERSHIPS \$10**
- \* **DONATIONS .... Hume Bank**



**ACC. 1112 99988 BSB. 64 0000**

**email [jinderacommunitygarden@gmail.com](mailto:jinderacommunitygarden@gmail.com)**

## Christmas Party

We are planning a Christmas Party for **Sunday, December 4th**, we will be indoors if raining.

We will have a PIZZA night for... ALL our MEMBERS and for all our Hard Workers - *If you are not a Member yet go to Jindera Community Garden Facebook to join.*



## Where Can We Find Happiness

What Makes You Happy in Your Garden  
Do you feel Happy in your Garden  
What makes a Happy Healthy Garden

- ☼ Make you Garden enjoyable
- ☼ Plant Veggies you enjoy
- ☼ Plant Flowers you enjoy
- ☼ Plant Trees Bees enjoy
- ☼ Add Colour to your garden
- ☼ Raise your Garden where wet

Happy Gardens needs a Path.  
Paths needs to go somewhere  
At the end of the Path, you may need to sit and ponder.  
Many decisions have been made while overlooking your garden.

### Happiness In the Garden

Happiness is not about what quantity you have but what you can do so you are *enjoying* your garden to the *fullest*



Dust if you must But its better to plant a seed or pull out a weed.



Enjoy the sun for its fun  
Its not a big house we need  
Its a garden we need



The **OCTOBER MEETING** was a great success, thanks to all those who made an effort to come.

### Topics Included: -

Flooding - Removing small garden tubs because of flooding

Meeting with Greg Blackie

Cream compost bin to fill

Cake Stall - Please bring your lovely cakes & plants to IGA on Saturday 12th November

Christmas Party - December 4th

Eftpos Machine was a success at last stall

Working Bees will happen when rain stops

Amazing Raffle Prizes -

We have for our Stall Raffle thanks to Cathy Gooley. **Thank you, Cathy**, for the wonderful effort and time you have put into this Fundraising program.

Social outings will be on the list which will be on Jindera Community Garden Facebook 'POST'.

Email [jinderacommunitygarden@gmail.com](mailto:jinderacommunitygarden@gmail.com)

**Jindera Community Garden**

**Would like too nominate**

Cathy Gooley to be our

**Fund-Raising Cordinator**

For our Community Garden

For the year 2022 - 2023

Bank Hume -BSB 640000

Acct-1112 9988

Email-jinderacommunitygarden@gmail.com

Eileen White President.....

Cheryl Ingrey Treasurer.....

Cathy Gooley Fund-raiser.....

## Burrumbuttock Flower Show

A last minute decision - Lorraine, Cheryl and I went out to Burrumbuttock Flower Show with a thought in our mind that we may find or see a few ideas for the Community Garden .... and so we did find a few leads and hopefully we can put them into place quickly .  
For those who missed out make sure you go to the next one it was worth it.

## MEMBERS NEEDED

If you would like to be a Full Member of our Jindera Community Garden or even just a Social Member please go to the Facebook page to join.

As well as help in the garden, you can come to our Social Garden events - Coffee mornings - Christmas party - Stall helper.



### Jindera Community Garden

Are now accepting

## Memberships

**Fees \$10**

per year

Hume Bank

Acc. 1112 99988

BSB. 64 0000





# MICK'S TREE HEIGHT REDUCTION & SHAPING SERVICES

**SPECIALISING IN:**

**TREES** - felling/lopping  
/pruning & removal

**PRUNING &  
STUMP GRINDING**  
- hedges/bushes/shrubs  
/roses & palm trees  
(chipping available)

**OTHER SERVICES -**  
gutter cleaning/  
rubbish removal

**Special  
Discounts  
for  
Pensioner  
Services**

**MICK: 0427 316 497**



## Lester & Son

Funeral Directors

*A tradition of personal, professional care since 1907*



**Cherie, Tony, John**

**359 Wantigong St  
Albury  
02 6040 5066**

**[www.lesterandson.com.au](http://www.lesterandson.com.au)**

*All Hours • All Areas • Pre-planned Funerals Available*



## Jindera Vet Clinic

Phone: 02 6026 3277 Email: [clinic@jinderavet.com.au](mailto:clinic@jinderavet.com.au)

Hours: Mon-Fri 8.30am-6pm Sat 8.30am-11am  
89 Urana Street, Jindera NSW 2642

Daryl Klein B.V.Sc.(Hons) Veterinary Surgeon  
Brigit Pitman B.V.Sc.(Hons) Veterinary Surgeon

*With the bonus of wonderful staff!*



## JINDERA BUTCHERY

*Quality Meat & Personal Service  
– Bulk Meat Specials –*

Brad & Tina Taylor  
Shop 7, 87 Urana Rd,  
Jindera, NSW 2642 (02) 6026 1886



## McMillan Electrical


**Craig McMillan**  
All Electrical Services

PO Box 477, Jindera, NSW  
[mcmillanelectrical44@gmail.com](mailto:mcmillanelectrical44@gmail.com)  
0418 966 207

NSW License 151911C  
VIC License REC-31010

## FUGE EARTHWORKS PTY LTD

- SCRAPERS • DOZER • LOADER • EXCAVATOR
- GRADER • TIP-TRUCK • TRAXCAVATOR
- ROLLER & BACKHOE FOR HIRE



- Dam Construction, Enlargement and Repairs
- Site Excavations, Drainage, Driveways
- Bulk and All General Earthworks

**MICK FUGE: 0428 480 341**

Ph/Fax: (02) 6026 3571. Email: [fuge.1@bigpond.com](mailto:fuge.1@bigpond.com)  
375 Molkentin Road, Jindera, NW 2642.



# PESTS?

Spiders, Termites, Rodents,  
Carpet Beetles, Ants, Fleas  
Wasps or **WORSE?**

## We Can Help!

- Domestic & Commercial Pest Control
- Timber Pest & Building Inspections
- Termite Treatments
- Thorough Written Reports
- Free, No-Obligation Quotes
- All work Guaranteed

[www.piantospestcontrol.com.au](http://www.piantospestcontrol.com.au)

[office@piantospestcontrol.com.au](mailto:office@piantospestcontrol.com.au)

VIC Lic No. L005632 | NSW Lic No. 5091710

Jindera, Burrumbuttock, Holbrook, Albury-Wodonga,  
Corowa, Rutherglen, Wangaratta, Howlong,  
& surrounding areas.

Pianto's  
**Pest Control**



**(02) 6032 7137**



# BOBCAT WHILEY

- |                    |             |              |
|--------------------|-------------|--------------|
| ■ Bobcat with Trax | ■ Trencher  | ■ Hay Spikes |
| ■ Post Hole Digger | ■ Excavator | ■ Tip-Truck  |
|                    | ■ Slasher   |              |

**PHONE GEOFF: 0408 698 028**

Dights Forest Road, Jindera, NSW 2642

**(02) 6026 3990**

## Civil Celebrant

—Judy Gray—

•Weddings •Baby Namings •Funerals

*Conducted in Style*

TELEPHONE: 6026 3329

MOBILE: 0418 617 385

## COOEE BOOKKEEPING

Contract bookkeeping for small to medium businesses  
Xero and MYOB

**Judith Hudson**

**0431 027 268**

[judith.hudson9@gmail.com](mailto:judith.hudson9@gmail.com)



**"FOR ALL YOUR PRINTING REQUIREMENTS"**

- Business Cards • Letterheads • Books • Raffle Tickets
- Complete in-house design service • All business stationery
- Invoice Books • Stickers • Brochures • Leaflets

**(02) 6026 3611**



The rain continues .... however, our course is still holding up well, such that we are the only club who has been able to host "Pennant" so far this year. The first round of pennant was hosted by Jindera on Sunday 9<sup>th</sup> October where 40 players took to the field in glorious sunshine (True), with both Jindera teams bringing home the chocolates.

Jindera A defeated Corowa and Jindera B defeated Holbrook.

The two rounds following – on the 16<sup>th</sup> and 23<sup>rd</sup> October at Albury and Culcairn respectively - were cancelled due to weather and/or poor course conditions.

The inclement weather has also caused delays with our irrigation upgrade, with marking of the course, trenching and tank installation tasks being delayed. Hopefully as things dry out, we will see some action soon.

The "9-Hole" Comp is still running in conjunction the normal 18-hole Sunday comp and provides a great opportunity for those looking for an entry level into competition golf. Ideal for juniors ...

The Friday night "Chook Run" is now running on Daylight Savings times, with tee-offs between 4 and 5 pm.

Our "Closing Day" men's and mixed 2 Ball Ambrose was held on Sunday 2<sup>nd</sup> October, with 34 players enjoying a great day. Thanks again to the ladies for their "First Class" catering and everyone who helped in getting the course great condition.

Results as Follows: -

**Mixed- Winners** Rawinia Smithenbecker and Jake Sanders (70.25), Runners-Up Lucy and Jack Kimpton (71.5).  
**Balls** – Julie and Julian Hayes (72.5). Daryl Klein and Mihi Smith (74.5), Ken Garfield and Elizabeth Heir (76)

## SCORES

### SUNDAY COMPETITION

SUN 2/10/2022 - Closing Day 2 Ball Ambrose – Mixed and Men's

Player 1	Dly Hcp	Player 2	Dly Hcp	Comb Hcap	Gross Score	Net Score	Results
Denis Lord	34	Stuart Millar	23	14.25	78	63.75	W Mens
Noah Wilson	24	Ethan Smead	48	18	85	67.00	R/u Mens
Strop Weldon	27	Simon Cossor	12	9.75	77	67.25	B
Nev Winter	30	Bob Sheerans	23	13.25	81	67.75	B
R. Smithenbecker	17	Jake Sanders	22	9.75	80	70.25	W mixed
Frank Carmody	32	Alex Vette	15	11.75	83	71.25	B
Jack Kimpton	17	Lucy Kimpton	37	13.5	85	71.50	Ru mixed
Ash Paech	12	Harvey Paech	56	17	89	72.00	B
Trev Freeman	21	Nev Brand	23	11	83	72.00	B
Julien Hayes	21	Julie Hayes	25	11.5	84	72.50	B
Jeff Donney	36	Brandon Taylor	17	13.25	86	72.75	
Daryl Klein	21	Mihi Smith	37	14.5	89	74.50	B
Matt Klingsporn	24	Walter Paech	43	16.75	92	75.25	
Ken Garfield	27	Elizabeth Heir	37	16	92	76.00	B
Peter Chaston	37	H. Chaston	36	18.25	95	76.75	
David Gray	26	Judy Gray	42	17	95	78.00	
Brad Paech	28	Pat Maling	27	13.75	92	78.25	

SUN 9/10/2022 – First round of Pennant at Jindera – No Club Comp.  
Jindera Pool A won 5 – 0, Jindera Pool B won 3-0

**Men's- Winners** Stuart Millar and Dennis Lord (63.75),  
Runner-up Noah Wilson and Ethan Smead (67.0)  
**Balls** – Rob Weldon and Simon Cossor (67.25), Neville Winter and Bob Sheerans (67.75),  
Frank Carmody and Alex Vette (71.25), Ash and Havey Paech (72), Trevor Freeman and Nev Brand (72),  
Paul Spencer and Justin Dickson (70.25)  
**NTP-** Lucy Kimpton (7<sup>th</sup>), Julian Hayes (7<sup>th</sup>), Frank Carmody (3<sup>rd</sup>), Ethan Smead (7<sup>th</sup>, 3<sup>rd</sup>)

**Trophy Presentation Day 2022** - Was held at the clubhouse on Friday 28<sup>th</sup> following the chook run.

### LADIES

**Scratch/Club Champion** – Rawinia Smithenbecker  
**Handicap** - Mihi Smith  
**Match Play** – Mihi Smith  
**Medal Of Medals** – Rawinia Smithenbecker  
**Most Improved** – Mihi Smith  
**Eclectic** – Lucy Kimpton

### MEN'S

**A Grade Scratch/Club Champion** – Craig McMillan  
**A-Grade Handicap** – Greg Allen  
**B Grade Scratch** – Greg Preston, **Handicap** – Chris Larkin  
**C Grade Scratch** – Rhett Prescott, **Handicap** – Robin Weldon  
**"Col Rainbow Match Play"** – Simon Cossor  
**Medal Of Medals** – Robin Weldon

In the meantime, current comps are as follows: -

- **Sunday – Men's 18/9 holes**, event according to calendar on website Tee-off 8.30/9.00. (11.30/12.00 from June)
- **Wednesday – VETS 9 Holes**, Stableford (unless notified differently) Tee-off 8.30/9.00
- **Friday – Chook Run – 9 Holes**, Open to all, DST Tee-Off 4.00 to 5.00pm, can also be played throughout the week – Play your game, place cards – signed and verified by partner with \$5.00 in an envelope and slide under the door.

**The club has just purchased an electric golf cart for hire by members and visitors.**  
**For bookings, contact us via email.**

**Membership** – To join our great community golf club, simply download a membership form from our website or request one via email, email it back and pay via eftpos.  
Cost of membership for November has been reduced by \$10.00 to \$70.00 plus GST (\$80 inc.)

### SUN 16/10/2022

Stableford – 12 Players - Winner 18 Hole Comp. Dennis Lord  
Winner 9 Hole Comp. Dennis Lord

Name	Dly Hcp	18 Score	18 -Result	9 Score	9-Result
D. Lord	34.0	44	W \$25	20	W \$20
C. McMillan	10.0	35	R/U \$15	17	
Simon Cossor	12.0	34	B	17	R/U (CB) 2b
T. Corrin	21.0	34	B	15	
T. Freeman	21.0	31	NTP, B	13	
Russ Gueho	23.0	29	B (cb)	17	

### SUN 23/10/2022

Stableford – 15 Players - Winner 18 Hole Comp. Trevor Freeman  
Winner 9 Hole Comp. Don Singleton

Name	Dly Hcp	18 Score	18 -Result	9 Score	9-Result
T. Freeman	21.0	35	W \$25	14	
Don Singleton	32.0	33	r/u \$15	18	W \$20
Ron Smithenbecker	13.0	31	B	13	
David Gray	26.0	30	B	14	
Greg Allen	15.0	29	B	16	
C. McMillan	10.0	28	B	13	
R. Weldon	28.0	0		17	r/u 2b





*October Flood waters covering the 9th Tee, with the 6th Tee in the background across the creek (lake).*



*And the other side of a wet spring ....  
Looking down the first fairway*

## **VETS COMPETITION Wednesday Mornings – 9 Holes.**

**VETS Wed 28/09/2022** – Washed Out

**VETS Wed 5/10/2022** – Washed Out

**VETS Wed 12/10/2022** – 4 Ball Dunmore – 20 Players

Name	Name	Name	Name	Net Score	Result
J. Wiesner	D. Castles	D. Singleton	B. Hill	43	W
P. Chaston	D. Rixon	M. Dixon	D. Lord	43	R/U

## **CHOOK RUN – STABLEFORD**

**Chook Run - Fri 30/09/2022** – Stableford – 21 Players

Name	Dly Hcp	Net Score	Result
D. Gray	26.0	17	W c/b \$20
Rhett Prescott	26.0	17	r/u 3b
Strop	27.0	16	b
Trev Freeman	21.0	16	b
Simon Cossor	12.0	16	b
Shannon Robertson	17.0	16	b
D. Rixon	26.0	16	b
Andrew Hogan	7.0	15	b
Peter hogan	30.0	15	b
Nev Brand	23.0	15	b

**Chook Run - Fri 7/10/2022** – Stableford – 8 Players

Name	GA Hcap	Dly Hcp	Net Score	Result
T. Corrin	0	21.0	17	W c/b \$10
C. McMillan	0	10.0	17	r/u 2b
L. Kimpton	0	37.0	16	b
T. Duus	0	28.0	15	b c/b

# **JUNIOR GOLF COACHING**

Accredited Coach – Cameron Odewahn

**Four Week Program**

**Age Group 6 - 14**

**1<sup>st</sup> Round Sunday 20<sup>th</sup> November**

**Last Round Sunday 11<sup>th</sup> December**

**Time 1.30 – 2.30/3.00pm**

**Cost \$10.00 for 4 week program – inclds coaching, equipment and sausage sizzle.**

**Contact – [admin@jinderagolfclub.com](mailto:admin@jinderagolfclub.com), or Lucy on 0477232320**



**Jindera Country Golf Club**

Public group · 28 members

About Discussion Rooms Topics Events Media Members

Follow us on Facebook or our website at

[www.jinderagolfclub.com](http://www.jinderagolfclub.com).

**VETS Wed 19/10/2022** – Stableford – 18 Players

Name	GA Hcap	Dly Hcp	Net Score	Results
Tom McGrath	0		18	W
Ian Pretzel	0		17	R/U
Mark Dickson	0		17	B
Nev Winter	0		16	B
Peter Penny	0		15	B

**Chook/Duck Run - Fri 14/10/2022** – Stableford (modified course due wet) – 10 Players

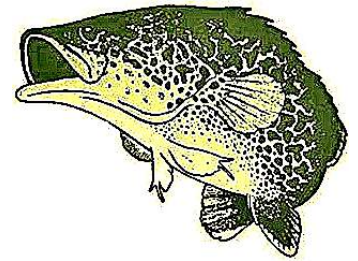
Name	Dly Hcp	Net Score	Result
J. Donney	36.0	25	\$10
T. Freeman	21.0	20	R/U
P. Penny	18.0	20	B
C. McMillan	10.0	19	B
S. Cossor	12.0	17	B

**Chook Run - Fri 21/10/2022** – Stableford – 16 Players

Name	GA Hcap	Dly Hcp	Net Score	Result
W. Paech	0	43.0	22	W \$20
Alex Christianson	0	0.0	18	R/u 3 Balls
C. Mcmillan	0	10.0	17	B
T. Corrin	0	21.0	17	B
D. Klein	0	21.0	15	B
P. Penny	0	18.0	15	B
D. Singleton	0	0.0	15	B
T. Freeman	0	21.0	14	B



# JINDERA ANGLERS CLUB INC.



What an unbelievable wet and windy month/es we have just experienced, the rain just keeps coming..... the good news is that it will be great for the native fish to breed.

The bad news is the carp population will go through the roof, hopefully the Murray cod can eat enough to keep the carp explosion at bay.

Local fishos have been going very well with plenty of large trout, yellowbelly with the occasional bycatch of Murray cod being caught below the weir wall.

Lake Hume continues to fish great with most fishos getting a feed of redfin, yellowbelly and trout are also being caught, as well as Murray cod (*these are out of season till the 1<sup>st</sup> December, any caught must be returned to the water straight away*) or as many of our members do, release prior to hooking them.....a true artform requiring great skill.

Last fishing comp results, junior star was Josh Bradbury with a nice redfin of 300, no ladies presented fish, mens best fish went to Lief Wikman with a 600 trout and Lief also won the biggest bag with a nice catch of trout, Wade and Sham weighed in redfin, Wade had a nice 510 yellowbelly and Laz had been to Jindabyne and had a nice 570 trout.

A group of Jindera Anglers went to Tantangara and had really good success on the trout in an out of competition adventure, apparently it was reasonably cold.

Lake Hume has a large amount of blue green algae and authorities are advising not swim in the water or to eat fish caught. Personally, I haven't noticed a problem with fish taken and eaten, probably be aware and take

notice of the water quality where the fish are caught.

## Upcoming Events

The clubs next general meeting will be held on Friday, 11<sup>th</sup> November at the clubhouse from 5.30pm.

Fishing comps, there are several coming up, the 29<sup>th</sup> to 31<sup>st</sup> of October will be an Open comp with fishing from 5pm Friday to 5pm Sunday with the weigh in at the clubhouse at 5pm.

The next fishing competition will be a closed comp to be held at the Pines at Blowering Dam on the weekend commencing at 4pm on Friday, 18<sup>th</sup> November with the weigh-in at midday on the Sunday.

Members can get further info from Wade on 0418460302 or Sham on 0412068480.

The next big fishing competition will be the Annual Opening of Cod season on the 1<sup>st</sup> December with the clubs comp being held from 5pm on Friday, 2<sup>nd</sup> December with the weigh-in at the clubhouse on Sunday 4<sup>th</sup> at 5pm. Promises to be an interesting opening this year with most rivers in flood.....

Christmas Party, this will be held in December, possibly on Sunday, 11<sup>th</sup> however this will be decided at the November General meeting, if you have any thoughts about this make sure you get along to the next meeting on Friday, 11<sup>th</sup> November.

## Tight lines!



A very good bag of Jindabyne trout caught recently by Laz and Graham



Kevin Brown caught this huge yellow belly on bait in the upper Murray recently



Brendan and mates had a nice morning in the streams near Kiandra



**Laz with a ripper Jindabyne brown trout**



**Wade Morey with a nice yellow belly caught last comp**



**Leif with a nice Weir wall trout**



**Brendan Kalinga with a nice brown trout taken at Tantangra earlier this month**



**Leif with a terrific bag of trout taken below Weir wall**

# Jindera



## Trading Hours

Mon – Fri 7:30am-7:00pm

Sat & Sun 8:00am-7:00pm

Find us on  to see our  
great specials, new lines  
recipes and loads more!

## JINDERA COMMUNITY DIRECTORY

Anglers Club .....	0409 537 452	Morgan Country Car Club.....	0448 004 706
Friends in Action .....	0438 262 480	Multi Purpose Stadium Committee.....	0429 960 616
Children's Services .....	6026 3877	Netball Club.....	0407 186 073
Community Forum .....	6026 3544	Pony Club .....	6026 3484
Conway Printing.....	6026 3611	Pre School.....	6026 3468
CWA.....	0428 263 318	Recreation Reserve .....	0438 263 417
Football Club.....	0409 263 658	Red Cross .....	1800 733 276
Friends of Jindera Wet Lands.....	0407 180 730	Rural Care Link .....	6026 3001
Golf Club.....	0418 690 510	St Johns Lutheran School.....	6026 3220
Jindera Lutheran Church.....	0427 200 035	St Mary MacKillop College.....	6045 9422
Jindera Pioneer Museum .....	6026 3622	St Paul's Anglican Church.....	6040 6457
Jindera Public School.....	6026 3280	Swimming Pool .....	6026 3900
Jindera Post Office.....	6026 3201	Tennis Club.....	0424 179 051



## Buy Local

Buying locally means local jobs and  
keeps our town alive.

Be Local - Think Local - Buy Local