

THE JINDERA NEWS

FREE local Newsletter distributed by the first Saturday of each month (except January) published by:-



A Jindera based, not-for-profit charity organisation.

At the Going Down of the Sun and in the Morning we Will Remember them.

Once again, there was a great turnout for the 10.30 am **ANZAC Day Commemorative Service** at the Jindera Memorial Park especially considering it was a long weekend before school resumed. This was a special time celebrating **110 years** since the ANZACs landed at **Gallipoli**. A crowd of three hundred gathered on the fine autumn morning.

Jindera Public School hosted the occasion and were responsible for the setting up of chairs, the sound system, organizing the guest speaker, Captain Allister Broomhead and tidying up. Thank you to these students for all their hard work.

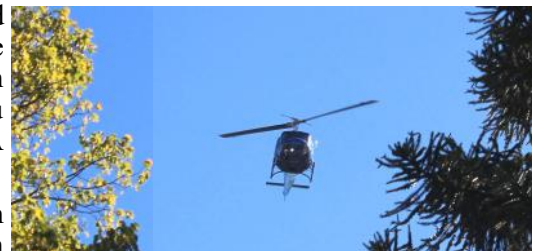
The gathering heard a tribute to the courage and commitment of the ANZACS by Captain Broomhead who also recognized the contributions made by the armed service personnel who followed in their footsteps through action all over the world.



We are very grateful for the presence of the Albury Air Cadets who made up the catafalque party who added to the solemnity of the occasion. Many wreaths were laid by community groups and individuals.



Thanks to Peter Martin, our local bugler for playing 'The Last Post' and 'The Rouse - Reveille'. Once again there was excitement when the helicopter flew over. The Rev'd Emily Payne from the Anglican Church opened and closed proceedings with very appropriate prayers. Thank you to her for that input. A delicious morning tea was provided by the CWA over in the School of Arts Hall to round off the morning.



Thank you to everyone who attended and especially the school children who sang the National Anthem with so much pride and enthusiasm.
(more **Anzac Day** - pages 4 & 5)



Rural CareLink inc.

Headlines and Happenings

By Lizzie Pogson. (Secretary, RCL).

Thank you to an outgoing Committee Member

The RCL Committee take this opportunity to thank Andrew Garrat for his presence on RCL's Committee of Management, acknowledging his input whilst with us, bringing a wider scope to our thinking and forward planning, with his work, volunteer and life experience, and express regret at his inability to remain at this time.



Welcome to a new Committee Member

We are delighted to welcome Judy Wright, (see bio page 3) to our RCL Committee and also on board as an Op Shop staff Volunteer. Already, we are seeing Judy's commitment to be part of many facets of care that we provide to the community. We warmly thank her and say ... "Welcome to the team!".

Bureaucracy with National Checks

We have sent a letter to Justin Clancy MP highlighting the doubling up of requirements for Volunteers in gaining regulatory National Police and Working With Children Checks, that in fact, are not National, but differ across borders. We have asked that he look into the necessity for charities such as ours to be paying for checks that could possibly be eliminated from the process.



Anzac Day

RCL has ensured that insurance covers the Anzac Day ceremonies, without which they could not be undertaken. We have been instrumental in ensuring the behind-the-scenes technicalities are in place. We look forward to also laying a wreath in memory of those who have served our country, those fallen and those still serving to keep us safe and provide the freedoms we enjoy. Lest We Forget



Jindera News circulation numbers and advertising prices to increase

With increases in population and popularity, we are increasing the newspaper print run to 700. We also currently have approx. 250 digital subscribers. Current adverts will remain the same, but new adverts will have a slightly increased price so that we can remain cost-neutral to the community.

For general **RCL (Rural CareLink) Enquiries** including Volunteering, Hardship, Personal Assistance and **Community Assist.**

Please call the RCL Office
0475 594 073

SERVICES AUSTRALIA

RCL continues to grow its relationship with staff at **Services Australia**, and we have a next event planned for **10.30am May 26th at The Hub**. There will be 3 staff attending, with information given re their roles and how someone can book appointments with them, also re myGov, how to create an account and link Centrelink and Medicare to it. The final 30 minutes can be for general questions or assisting those to be linked to myGov.



Services Australia

myGov

Linda - Financial Information Service Officer (FISO) who provides free, independent, and confidential information, tools and resources to help people with their current and future financial needs.

Alison - Aged Care Specialist Officer agedcare (ACSO) who delivers face to face services to help customers understand their current and future aged care needs.

We will need a **minimum attendance number** for the event to go ahead, so please **phone the RCL Office 0475 594 073** to get your booking done as soon as possible.

Visits to our Op Shop

It has been gratifying to see the excitement of the St Johns School who visited the Op Shop as part of their studies on recycling and sustainability. They each received a \$5 Voucher to come and spend.



New Name

Our '**Carers Plus**' programme has been re-named as: "**Community Engagement**", providing everyone an instant and recognisable picture of what we hope to achieve through any wider community events, and through what we do, almost daily- engage with our community.

Carer Support Group News

By Vickie Priscina. (Carer Group Co Ordinator, RCL).

The RCL Carer Group met at The Fox and Brew to Celebrate Easter with some delicious Morning Tea. Easter Eggs were also enjoyed. The Children loved the colouring activity and the Easter Bunny ears. We created happy memories and received lots of smiles.

Carers Support Group

We *usually* meet monthly on the
3rd Tuesday of each **month**

Please call **Vickie - 0428 406060**
for **venue** and **dates** of these meetings.

Peer support, respite & information sharing
is the focus of the Carer Group.

For more information call
Vickie Priscina - Carer Group Co-Ordinator
on **0428 406 060**

Meet our new Committee Member

Judy Wright

Recently retired from a wonderful 47 year career, I feel I now have time to continue to support local families in a "volunteer capacity".

Born in Albury, childhood memories include both my parents volunteering many hours each week in varying organisations. I have no doubt that this, along with my passion for mid-wifery has been a significant influence on my life.



After completing HSC, I moved to Melbourne and trained in general nursing at the Royal Melbourne Hospital followed by midwifery at Mercy Maternity Melbourne. I returned home in 1983 to marry and worked for many years as a midwife in Birth Suite Wodonga.

In 1992 following the birth of my 3rd child we moved to the outskirts of Jindera. I joined the tennis club not long after and still play on Saturdays. I was involved in both Jindera Preschool and Jindera Public school whilst my children attended, active on Committees in canteen and fundraising. I am a life member of Jindera Public School.

Working with women and their families as they welcomed new babies into their lives has been an absolute privilege and led me to later study Maternal and Child Health. The last 22 years of my career has been in Community Health roles, supporting parents and families, many with challenges and vulnerabilities, at what can be a time of overwhelming change.

It is this background that encourages me to continue supporting those in need, in our own Community. Family is very important to me, and I am fortunate my 3 beautiful children and their families live close by, I spend as much time as I can with them all.

Spare time is also spent gardening, reading, doing craft, travelling and catching up with friends.

I look forward to future times with Rural Care Link and all the special caring volunteers who give so much of their time freely for the benefit of our local community.

Jindera News Contributions

Please Note: The editorial team reserves the right not to publish any article or to modify the presentation to suit the style of the publication.

NEW Advertising Rates - May 2025

| | | |
|--------------|-----------|--------------------------|
| Per edition: | Full page | \$100.00 |
| | 1/2 page | \$60.00 |
| | 1/3 page | \$50.00 |
| | 1/4 page | \$40.00 |
| | 1/8 page | \$30.00 (Bus. Card size) |

Discounts Apply for consecutive advertisements

Also available: Colour advertising ♦ Single page inserts ♦ Non-standard advertisement sizes.

FREE digital colour editions of this publication are available by email subscription.

For more information or to request digital editions

Email us at jinderanews@ruralcarelink.org.au

DEFIBRILLATOR'S in Jindera

TWO Defibrillators are available **24 Hours** a Day

★ **Jindera Hub Building**

★ **Jindera Country Golf Club** easy to access from carpark

Other Defibrillators are available during the following

Jindera Facilities **Open Hours**

- ★ Football Club
- ★ Swimming Pool
- ★ Tennis Club
- ★ Fire Brigade
- ★ Anglers' Club
- ★ Jindera Medical Centre
- ★ Jindera Public School



In case of EMERGENCIES please familiarise yourself with these locations.

OP SHOP News

By Jason McKenzie (Op Shop Coordinator, RCL)

We now have some great Winter Stock in the Op Shop so come on down, say 'Hello' and grab some great bargains.

Thank you for supporting your local Op Shop.

Winter Stock



now in store

Op Shop ONLY enquiries

(02) 6026 3001

This is the dedicated Op Shop number and therefore, if you need assistance outside of trading hours, please use the RCL office number 0475 594073.

Op Shop Trading Hours:

Tues - Fri 10am to 4pm (closed for lunch 1pm to 1.45pm)

Saturdays - 10am to 1pm

83 Urana Street, Jindera NSW

[Op Shop Facebook](#)

please click on this link

Jindera Dawn Service

At the quiet dark hour of 5.45am on Friday the 25th April 2025, the fantastic community of Jindera and surrounds tuned up in numbers exceeding 300 to commemorate the Anzac Day Dawn Service.

As the current coordinator of the Jindera Dawn Service, I - Michael Smith, have been involved since 2022 and as a veteran have been moved by the support the community has shown for this significant occasion on the National Callender. It has greatly warmed me and also the veteran community to see such numbers attending, especially the enthusiasm of our younger generation.

The Dawn Service was well supported by soldiers from The Army Logistics Training Centre at Bandiana providing a professional aspect to our local service, with the addition of the catafalque party adding an extra dimension. Local veteran, Adam Paris laid a wreath on behalf of our veteran community and provided a heartfelt rendition of 'The Ode of Remembrance'.

The Jindera Rural Fire Service (RFS) provided the masses with a fantastic Gunfire Breakfast and without their ongoing support this Dawn Service would not continue to be the success that it is.

Myself and the veteran community would like to **thank** the following supporters of this wonderful yearly event; Greater Hume Council - Jindera Rural Care Link - Jindera RFS - Soldiers from ALTC Bandiana - Jindera Football Netball Club - All of the fantastic local community who attended this important event.





“When people feel like they belong, they thrive.”

How community shapes the experience of new regional workers

Relocating to a regional area for work can be a major life decision. While new opportunities and a slower pace of life can be appealing, the success of the move often hinges on something less tangible: *a sense of belonging*.

For essential workers moving to the Albury, Federation, or Greater Hume regions of NSW, The Welcome Experience is helping to ensure that sense of belonging isn't left to chance. Offered by Regional Development Australia Murray, The Welcome Experience is a **free service** designed to support essential workers and their families as they navigate the complexities of relocating to a new region. From housing and childcare to job opportunities for partners and introductions to local clubs and services, the program takes a personal approach to what can often be an overwhelming process.

At the heart of the program are Local Connectors like Lou Newman, who act as friendly, knowledgeable guides for new arrivals. “We help with the life stuff - so people don't just start a job, they start a life,” Lou explains. “Our role is about easing that transition and helping people feel like they're not alone in it.”

Lou's work often includes everything from organising school tours and helping with rental inspections to introducing people to walking groups, community gardens, or simply recommending a great coffee spot. It's all about building personal connections - one introduction at a time.

These small acts of connection aren't just nice gestures - they're critical. Research supports what The Welcome Experience is putting into practice: people who feel connected to their community are more likely to be happy, fulfilled, and committed to staying.

And that matters - especially in regional areas facing staff shortages in healthcare, education, emergency services, and support sectors. When essential workers feel welcomed and supported, they're not only more likely to stay - they're more likely to thrive.



The Welcome Experience



The Welcome Experience is available to essential workers across both government agencies (like NSW Health, Education, Police, and Ambulance) and non-government and private sectors such as health, vets, aged care, disability support, and early childhood education. It's tailored, free, and ongoing - support doesn't stop once the boxes are unpacked.

Ultimately, the program is about more than logistics - it's about people. “People who feel they belong in their community are happier and more content,” Lou says. “And when people feel like they belong, they thrive.” With the right support and a warm welcome, essential workers don't just relocate to the regions - they put down roots, build lives, and become part of the heartbeat of the community.

To find out more about **The Welcome Experience** contact Regional Development Australia Murray (RDAM) by calling 02 6060 2491.

15%
OFF

INQUIRE NOW

Invest in Leadership & Wellbeing

3 ESSENTIAL COURSES FOR ONE EXCLUSIVE PRICE!

ARE YOU READY TO BUILD A RESILIENT, MENTALLY HEALTHY WORKPLACE?

FOR A LIMITED TIME, BOOK AND PAY FOR ALL THREE OF OUR **ACCREDITED MENTAL HEALTH AND RESILIENCE TRAINING COURSES** AND UNLOCK AN EXCLUSIVE DISCOUNT!

- ★ **MENTAL HEALTH FIRST AID** (\$440)
- ★ **RESILIENCE FIRST AID** (\$575)
- ★ **HIGH ADVERSITY RESILIENCE TRAINING** (\$575)
- ✓ 6 DAYS OF ACCREDITED TRAINING
- ✓ SKILLS VALID FOR 3 YEARS
- ✓ IMPROVE WELLBEING, RELATIONSHIPS & LEADERSHIP IMPACT
- 💰 TOTAL VALUE: \$1,590
- 💡 **EXCLUSIVE OFFER: SAVE 15% (\$238.50 OFF)**
- ✓ **YOUR PRICE: \$1,351.50 (JUST \$225.25 PER DAY OF TRAINING!)**
- CHOOSE THE DATES THAT SUIT YOU!** [TRAINING CALENDAR](#)
- YOU HAVE 12 MONTHS TO USE YOUR BOOKING. SECURE YOUR PLACE TODAY!**

Made the move to Jindera?



The Welcome
Experience

meet
lou

your settling-in pro!

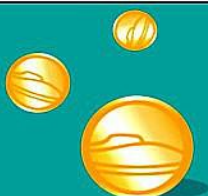
free relocation help for essential workers

Scan for eligibility



Moving to a new town can be daunting. Let Lou and the team from The Welcome Experience handle the details! From finding your new home, to settling in and connecting you with the locals, she will make your move smooth and stress-free. Enjoy a warm welcome and settle in with ease!

Call Lou on 02 6060 2491



BuyLocal
in Greater Hume

SHOP in JINDERA



NSW RURAL FIRE SERVICE



JINDERA BUSH FIRE BRIGADE



by "Poppa Pomegranate"



Thank you to everyone who donated to the **Good Friday Children's Hospital** appeal. Through your generosity, our crews raised **\$7,200** as part of the total \$90,000 plus raised by emergency services. Special thanks to President Dave for organizing the crews.

It was fantastic to see over 250 people attend the **ANZAC Day** Dawn service again. Our **gunfire breakfast** raised **\$750** for legacy this year. It was great to see so many children taking an interest again this year. The brigade is honoured to be able to **lay a**



wreath at the morning ANZAC service. We started following a request from our then **Station Officer Barry Osborne**. We have continued this special commemoration after his passing some years ago. Barry (aka Mr. Movies) was an ardent supporter of the Jindera community. If you were lucky enough to meet him he always had a Fantail or two for you. For those who have been around for a while you would remember he would spell a word wrong every now and then to see if he got any reaction. He always did from a number of locals who couldn't resist to comment. The old fire brigade sign board is still active at the

Jindera Museum.

The Brigade has had some activity this month responding to a **fire** at the **Jindera Public School**. This was a result of some renovation work at the school. The fire was quickly extinguished by our Crews. Captain Graham thanks our neighbouring Lavington NSW RFS Brigade and their crews, the Fire and Rescue Crew, and NSW Ambulance crew that attended assisting us in getting the building to a safe point to hand it back the NSW Department of Education principal contractor.

Again, we ask that you please continue to take care when **burning off agricultural paddocks** or pile burns on small acreage blocks. Remember to **notify the NSW RFS** and your neighbours 24 hours before lighting the fire.

The cooler nights have many of us lighting fires or **gas heaters** in our homes. If you have not done it yet **please check** these are safe or have them professionally checked. This is particularly important to help protect your families as we head into winter.



If you would like to **join us** in assisting our great community of Jindera, we encourage you to **drop in** when you see us **at the Fire Shed** every **second Saturday morning** for our training and maintenance sessions or give the captain a call on **0427 263414**. We have many roles that you can help us with if you do not want to get on a fire truck.

Thanks for your ongoing support of the Brigade.

Help to keep us safe so we can keep Jindera safe!



NSW RURAL FIRE SERVICE

Jindera

PH: 0427 263 414



Glenellen Solar Farm

Community Update



Glenellen Solar Farm Community Grant Program

Global Power Generation Australia (GPG Australia) is pleased to announce the launch of the **Glenellen Solar Farm Community Grant Program**, as part of the Community Engagement & Benefit Sharing Plan associated with our Project. **Up to \$100,000** will be invested into community-led projects that make the Jindera area stronger, sustainable, and more connected.

We are inviting **applications** from all corners of your community related to any of the following categories — including, but not limited to:

- Education and Youth
- Environment and Sustainability
- Public Health and Wellness
- Sports and recreation
- Arts and Culture
- Social Equity and Inclusion
- Community Development

Previous grants at some of our other renewable projects include bus storage shed for a school, mower replacement for a golf club, upgrade to sporting club facilities, installation of a new accessibility ramp, art installation for a playground, etc.

A **call for grant funding applications** will be announced in **June**, once a **Community Grant Committee** will be established.

Formation of the Community Grant Committee

To ensure transparency and fairness in how grants are awarded as well as attracting a wide representation of the Jindera community, we are forming a local **Community Grant Committee**. We are seeking **community-minded volunteers** that will meet periodically to set the guidelines and selection criteria, review and evaluate grant applications, and select grants recipients. The full commitment should be a minimum of 4 evening meetings of approximately 1.5 to 2 hours.

The committee will comprise of **two GPG and one Council representatives**, none of which will have voting rights and a **number of community members**.

If you are interested in serving on the committee or want more details, please reach out by email or phone using the contact details below. **Applications to become a member of our committee will close on 20th May.**

Contact Us

If you have any questions or require more information about the Grant Program or any other topic related to our Project, please contact our Community and Stakeholder Engagement Officer, **Philip Beattie**, by phone on **0488 515 275** or by email, at **glenellensolarfarm@globalpowergeneration.com.au**. If you would like to be included on the distribution list for our newsletter and updates via email, please email Philip using the details above

Glenellen Solar Farm

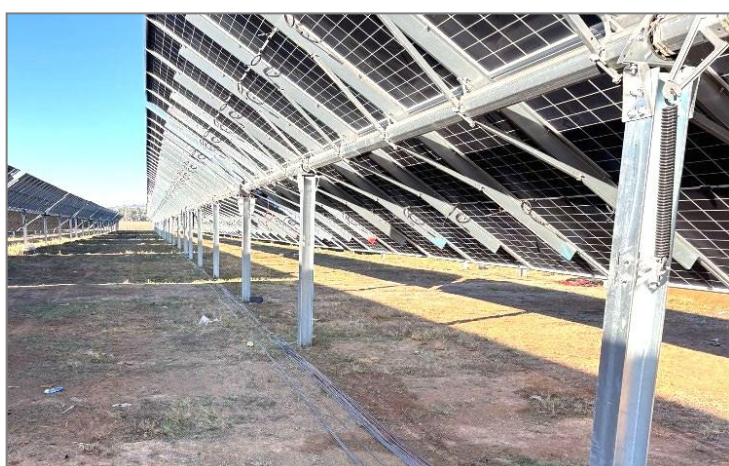
Construction Update

28 April 2025

There has been significant progress in the installation during the last month.

Works completed or in progress

- Substation works continue
- Over 150,000 Modules (panels) installed
- Over 22,000 Trackers installed
- 50 Inverters delivered
- Approximately 150 people working on-site
- HV Trenching began, now at 5%



Upcoming works on site

- On going Module and Tracker installation
- On going works on the Trans grid collector sub-station
- Landscape screening planting to commence onsite

Bundaberg Solar Development Pty Ltd

Phone: 0488 215 575 (Philip Beattie – Community and Stakeholder Engagement)

Email: glenellensolarfarm@globalpower-generation.com.au or philip.beattie@globalpower-generation.com.au

Mail: Glenellen Asset Pty Ltd, Suite A, Level 3, 73 Northbourne Avenue, Canberra ACT 2601



Your People Working Well

2025 Training Schedule

JANUARY

29 RFAST

FEBRUARY

12 & 13 MHFA

18 & 19 HART

26 RFAR

MARCH

4 & 5 RFA

APRIL

8 MHFAR

9 RFAST

MAY

1, 8, 15, 22 & 29
HSR

6 & 7 RFA

14 HSRR

JUNE

18 & 19 MHFA

JULY

2 & 3 HART

AUGUST

SEPTEMBER

3 RFAST

4 MHFAR

10 & 11 RFA

OCTOBER

1, 8, 15, 22 & 29
HSR

14 HSRR

21 RFAST

NOVEMBER

4 & 5 MHFA

12 & 13 HART

18 RFAR

DECEMBER

3 & 4 RFA

WWW.BLMC.COM.AU

RFA

Resilience First Aid

RFAR

Resilience First Aid Refresher

RFAST

Resilience First Aid Starter Training

HSR

Health & Safety Representative

HSRR

Health & Safety Representative Refresher

MHFA

Mental Health First Aid

MHFAR

Mental Health First Aid Refresher

HART

High Adversity Resilience Training

Booking link or QR Code: <https://app.qin.world/blmanagementconsultants/forms/620>



Jindera Community Diary

MAY 2025

| SUNDAY | MONDAY | TUESDAY | WEDNESDAY | THURSDAY | FRIDAY | SATURDAY |
|--|--|---|--|--|--|---|
|  | |  | | 1 | 2 <u>Gentle Exercise Class</u> Jindera Hub – 10.00am <u>Jindera Golf Club</u> Chook Run – 3.30pm <u>Jindera Anglers Club</u> Club House, Jindera Reserve - 5.30pm | 3 FEDERAL ELECTION DAY 2025  |
| 4  GARAGE SALE <u>CAKE STALL</u> In front of Post Office JMPH Committee <u>Jindera Museum</u> Tearooms from 11am <u>Jindera Craft Shop</u> – 11.00am - 2.00pm <u>Jindera Golf Club</u> - Mens Comp. - 8.30am <u>Jindera Blokes Walk</u> – Jindera Oval - 7.45am | 5  | 6 <u>Morgan Country CAR CLUB</u> 7.30pm - Club House - Jindera Reserve <u>Sit "n" Knit</u> Ladies Knitting Group Jindera Hub Library 10.00am -12.00pm <u>Community Meeting</u> Community Hub - 7.30pm | 7 <u>CWA Meeting</u> Jindera School of Arts Hall - 10am <u>Stitch & Chat Craft Group</u> - Jindera Hub 2.00 - 3.30pm <u>Jindera Golf Club</u> Vets – 8.30am  <u>National Dinosaur Day</u> | 8 World Red Cross Day  | 9 <u>Gentle Exercise Class</u> Jindera Hub – 10.00am <u>Jindera Golf Club</u> Chook Run – 3.30pm <u>Jindera Anglers Club</u> Club House, Jindera Reserve - 5.30pm  | 10 <u>Mother's Day CAKE STALL</u> at IGA - 8.00am Jindera Community Garden |
| 11  Mother's DAY <u>Jindera Museum</u> Tearooms from 11am <u>Jindera Craft Shop</u> – 11.00am - 2.00pm <u>Jindera Golf Club</u> - Mens Comp. - 8.30am <u>Jindera Blokes Walk</u> – Jindera Oval - 7.45am | 12 <u>International Nurses Day</u> birthdate of Florence Nightingale  | 13 <u>Sit "n" Knit</u> Ladies Knitting Group Jindera Hub Library 10.00am -12.00pm | 14 <u>Jindera Golf Club</u> Vets – 8.30am | 15 | 16 <u>Jindera Golf Club</u> Chook Run – 3.30pm <u>Gentle Exercise Class</u> Jindera Hub – 10.00am <u>Jindera Anglers Club</u> Club House, Jindera Reserve 5.30pm | 17 |
| 18 <u>Jindera Museum</u> - Tearooms from 11am <u>Jindera Craft Shop</u> – 11.00am - 2.00pm <u>Jindera Golf Club</u> - Mens Comp. - 8.30am <u>Jindera Blokes Walk</u> – Jindera Oval - 7.45am | 19 | 20 <u>Community Forum</u> Community Hub - 7.30pm <u>Sit "n" Knit</u> Ladies Knitting Group Jindera Hub Library 10.00am -12.00pm <u>Carers Support Group</u> Ph: 0428 406060 | 21 <u>Storytime</u> Jindera Library 11.00am <u>Jindera Golf Club</u> Vets – 8.30am | 22 Australia's Biggest Morning Tea  | 23 <u>Jindera Anglers Club</u> Club House, Jindera Reserve - 5.30pm <u>Jindera Golf Club</u> Chook Run – 3.30pm <u>Gentle Exercise Class</u> Jindera Hub – 10.00am | 24 CAKE STALL outside IGA - 7.30am Biggest Morning Tea Cancer Council |
| 24 <u>Jindera Craft Shop</u> – 11.00am - 2.00pm <u>Jindera Golf Club</u> - Sunday Comp. - 8.30am <u>Jindera Blokes Walk</u> – Jindera Oval - 7.45am | 26 <u>SERVICES AUSTRALIA</u> Community Hub - 10.30am  Services Australia | 27 <u>Sit "n" Knit</u> Ladies Knitting Group Jindera Hub Library 10.00am -12.00pm | 28 <u>Jindera Golf Club</u> Vets – 8.30am | 29 | 30 <u>Jindera Anglers Club</u> Club House, Jindera Reserve - 5.30pm <u>Jindera Golf Club</u> Chook Run – 3.30pm <u>Gentle Exercise Class</u> Jindera Hub – 10.00am | 31  |

**Do you have an event you would like added to the
Jindera Community Diary**
CONTACT US ON: jinderanews@ruralcarelink.org.au



OP SHOP VOLUNTEERS *Required!*

If you have some spare
time and would like to
→ join our team



WE WOULD LOVE TO HEAR FROM YOU

OP SHOP
OPEN

Pick up an application and information pack from

The Op Shop - Phone 02 60 26 3001

Tuesday-Friday 10am to 4pm (closed for lunch 1.00-1.45) - Saturdays-10am to 1pm

Come in to the **Op Shop** on Tuesday or Wednesday to talk with our Op Shop Coordinator

The RCL Office- Phone 0475 594 073

9am to 2.30pm (closed for lunch 1.00-1.45) - Tuesday/Wednesday/Thursday

Or email: office@ruralcarelink.org.au

We Need Your Help



Learning in Action at Little Saints Preschool

"Big ideas, little hands, and hearts full of wonder."

At Little Saints, curiosity, creativity, and connection are the heartbeat of our days.

Children are empowered to lead their own learning, transforming spaces and materials into rich, imaginative experiences that support their growth and development.

The **tuff tray** often becomes a bubbling centre of experimentation. Herbs, petals, and coloured water are combined in endless recipes as children negotiate ingredients, share their ideas, and bring their concoctions to life. These moments spark meaningful conversations and encourage collaborative storytelling and exploration.

In the outdoor mud kitchen, earthy creations like chocolate stew and dino leaf soup emerge from bark, sand, leaves, and herbs. These sensory-rich experiences support fine motor development, imaginative play, and a deep connection to nature.



A favourite provocation among many is the pizza playdough station. Here, menus are created, orders taken, and dough is rolled and shaped in countless ways. This area invites creative thinking, role-play, and early literacy as children engage in purposeful, social play.

Inside, the office and letter-writing space invites children into the world of writing and communication. With envelopes, stamps, clipboards, and notepads, children naturally explore roles such as posties, bosses, and writers - immersing themselves in meaningful mark - making and organisation.

At the drawing table, layers of paper, glue, and colour come together in letters, signs, and abstract creations. It's a space that invites calm focus, personal expression, and the development of fine motor skills through hands-on exploration.



The children's wonderings - like questions about floating, sinking, and how the world works - regularly inspire new lines of inquiry. These moments often lead to rich investigations that involve hands-on testing, discussion, and discovery, with educators supporting children to explore their theories and build their understanding.

Learning at Little Saints is ever evolving. Driven by children's interests and supported by intentional teaching, each day brings new opportunities to imagine, investigate, and connect.



 **RIVERINA LCA**

Year 7-12

YOUTH GROUP
run by teenagers for teenagers



6:30pm Fridays
May 9
May 23
June 6
June 20
July 4

\$5 per night
(Includes Dinner)

St John's School Hall
154 Adams St, Jindera

more info:
peter.reed@lca.org.au


Register at:
stlukesalbury.churchcenter.com/registrations/events/2796353





FAMILY GAMES CLUB

 **THE FOX & BREW JINDERA**

Mondays 4-5pm


 **CARD GAMES** 

 **BOARD GAMES** 

 **FREE ENTRY** 

Drinks and snacks available for purchase
Feel free to come alone or bring your friends

For More info, Contact:
peter.reed@stjls.nsw.edu.au

 **LUTHERAN CHURCH OF AUSTRALIA**
where love comes to life


FRIDAY NIGHT CHAPEL
at Saint John's School




6pm Fridays
May 2
May 16
May 30
June 13
June 27

ALL Welcome

FREE BBQ

School Hall
154 Adams Street
Jindera



 FOLLOW US
 
[stjohnschapeljindera](https://www.facebook.com/stjohnschapeljindera)

SHOP local **SHOP in** **JINDERA**

Successful Car Club Swap Meet - Show & Shine

While we may all be looking for some more rain, the weather gods, apart from the winds, were very kind to the **Morgan Country Car Club** on Sunday March 30th when we held our Annual Swap Meet - Show & Shine.

Many of our Stall Holders arrived on Saturday, in preparation for the big day, with the rest arriving well before sunrise on Sunday, so they could be ready for when the crowds started strolling in at 7am, with over **3,500** through the gates. Although the morning was a little cool (and dark) to start with, it was good to see so many early shoppers, looking for that elusive item, with over 297 stalls to browse.

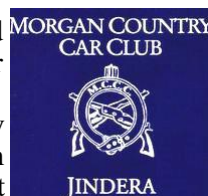
For the not so serious shopper or collector, there was plenty of great variety for those who took the time to wander down all the rows and browse, ranging from household items, car parts & memorabilia, home-made and baked goodies, antiques and all things in between. Not to mention plenty of food and good coffee. For those who were more interested in all things with wheels and engines, a great display of over **220 vehicles** of all sorts were on display in the Jindera Primary School grounds.

The Morgan Country Car Club would like to thank the following for their support.....

- Our Car Club members, their family and friends for all hours they gave in the days before and on the day so that all run smoothly.
- The Jindera Primary School, and Greater Hume Council for the use of their grounds.
- The Jindera Bush Fire Brigade.
- All the Show & Shine entrants.

Also a big thank you to our sponsors Shannons Insurance, Albury Auto Paints, The Fox & Brew, Autobarn Albury, Border Bandag, Zealous Automotive, Lavington Tyre & Exhaust Centre, Repco Albury, Bursons Auto Parts Albury, Repco Wodonga, Pedders Albury, Whitehouse Motorcycles, Albury Engraving + Paul's Medals, Schwartz Motors, Marshall Batteries, Super Turf and Hamblin Hire.

*And a special mention to all our sellers and buyers and everyone who attended our big day.
Without your support, this event would not be a success.*



more Car Club page 17

WHEN YOUR BODY HOLDS THE STRESS YOUR MIND CAN'T PROCESS...

Stretch, Relax & Rebalance

**Slowing down isn't lazy—it's healing. Come stretch,
soften and feel safe in your own skin.
A slow, restorative session to relax your nervous system
+ reconnect with yourself.**



Further information 0402 009 269 or
email office@blmc.com.au
At the Jindera Co-Work Space

bjelkie.com.au

**WEDNESDAY
7.30PM &
SATURDAY
8.00AM**





Contact Rachel: 0407 122 732
rachel@flowermilljindera.com.au



Book an appointment to visit our studio or find our fresh flowers daily at the Next Level Café in Jindera

www.flowermilljindera.com.au



Anglican Parish of Northern Albury
To Know Christ and Make Him Known

St. Paul's Jindera

Sundays 8.30am

Priest - The Rev'd Emily Payne

Mobile: 0408 666 119

Parish office : 6040 6457

Email: vicarnorthernalbury@gmail.com

website: [https:// anglicannorthernalbury.org.au](https://anglicannorthernalbury.org.au)

St Mary's Catholic Church Urana Road Jindera

02 6025 1784

email:

lavington@wagga.catholic.org.au

website: holyspiritlavington.org.au

Parish Priest: Fr. P Murphy

Assistant Priest: Fr. M Perry

Mass times: Saturday 8am

Sunday 9am

Confessions before Mass

Baptisms and Weddings
by Appointment



BURRUMBUTTOCK
LUTHERAN PARISH



Growing Where We are Planted

Sunday Worship Service Times

Bethlehem Jindera 9am

Adams Street, Jindera

Trinity Bethel, Holy Cross Burrumbuttock
and St Peter's Gerogery: please check our
website for worship times

<https://burrumbuttock-parish.lutheran.org.au>

Contact: Pr Christian Fandrich 0457 841 123

You're welcome at
**Lavington
Baptist
Church**

Youth Group- 13 years +
7:30 - 9:30pm

Good News Club 9 -12 years
6 - 7:30pm

Sparks 4 - 8 yrs
6 - 7:30pm



www.lavingtonbaptistchurch.com

Friday Nights during school terms
450 Parrall St, Lavington
TEL: (02) 60 215860

Gateway
LIFE CHURCH

SUNDAYS
10am (AU) & 12:30pm (AF)

Where: Corner Union Road &
1108 Corella Street, North Albury

ALL WELCOME!   

AROUND THE TOWN

UPDATE

with
Jenny O'Neill

Campers at Rec. Reserve

The town has been very busy over Easter with lots of visitors **camping** at the Rec. Reserve. Check out the interviews carried out with some of them on page 23 in the paper. It is not compulsory to pay a fee but all donations are used to improve the facilities.



Playground Area

May should be a progressive month around Jindera especially at the **playground area** where new all-abilities equipment, fences, the last of the shade sails and a dump point are installed. The shared path along Urana Rd is getting closer. The zip line will be closed while an extension of the ramp will take place. Partial closure of the playground will occur during this time.



Jelbart Road

Jelbart Road tree removal is complete and the construction of the sealed road is out for tender.

Netball Club Building

Jindera Netball Club building is making great progress and certainly stands out. It will be a great asset for the Recreation Reserve and the organisers need to be congratulated.



Neighborhood Watch

A reminder to be conscious of "Neighborhood Watch" and to report any anti-social behaviour.

Friends of the JINDERA WAR MEMORIAL

We are looking for a group of like minded people who would like to preserve this important monument for future generations to remember those who served in the past.

There is a lot that needs **restoring** and/or **rebuilding** including the fence, concrete path and replanting of the garden.

The Jindera Recreation Reserve applied for a grant a number of years ago to have an inspection carried out and then receive a report on the current condition of the cenotaph.

Now is the time to join together and come up with ideas on how to make this place better.

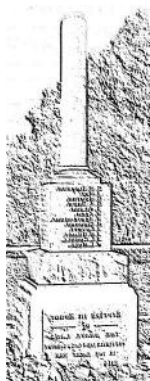
There is a grant currently out there from the DVA which needs quotes organised to apply for it.

Council have budgeted for new park furniture to be installed.

Contact **Jenny O'Neill 0438 263 417**

or **Aimee Keogh (Riley) 0467 000 306**

for more information or to indicate your interest.



Friends in Action (Caritas) Diary: 2025

A Group that can offer emotional and spiritual support and opportunity for growth through caring and personal relationships.

14th May

Woodstock Flour:

M/tea 10am & tour Woodstock Flour \$15/head. (773 Rutherglen Springhurst Rd, Lilliput).

Lunch 12 noon Star Hotel Rutherglen (105 Main St, Rutherglen).

Depart St Paul's 9am.

Contact: Roz Phillipson 0417 457 122

Friendship in Action

JINDERERA

• PIONEER MUSEUM •

This month the preparation for **Anzac Day** has been extensive. Crocheted and knitted poppies, both purple and red, have been created to add to the fabulous display for this memorial day. For those that aren't aware, the **purple poppies** are in memory of the many animals that have played a significant role in war throughout history. Animals have been used in many ways during various encounters; transportation, communication, and even combat. These animals have made important contributions to the war effort and have often sacrificed their lives in service to their human counterparts. During this time of remembering and acknowledging the service to us all of the ANZAC campaign, we would also like to remember the animals who contributed their service and sacrifice.



Our member, Kerry, created a memorial to those soldiers displayed on the War Memorial at the Jindera Recreation Reserve. This display featured in a window of Wagners Store, and this was illuminated each evening between the 23rd and 29th of April. The garden also featured the 100's of handmade poppies; thank-you to all those wonderful craft-oriented folk who helped with the creation of this feature at the museum.



The **Man From Snowy River Festival** brings groups from all over Australia and again this year a group from north-west Western Australia attended, including the museum on their list of important places to visit. This is the third year this tour company has brought a group from Western Australia to this festival. Many of the group visiting this year were volunteers from a museum at Geraldton, so there was lots of discussion and note taking. Like so many of the groups that visit, morning or afternoon tea is a big highlight of their visit, particularly Judy's scones!

The school holidays always bring additional visitors to the museum and combined with the Easter break, it was particularly busy. The museum hosted half of the **MG Car Club** on Easter Monday for morning tea. As part of their rally, they had to work their way through a series of questions and things to find in the village; some we couldn't even answer!



Good Friday brings the second only full day closure of the museum in a year and to take advantage of no foot traffic, we have repainted the toilet floors and re-shellacked the Tea Room floor. Shellack is the product used in French polish and, fortunately, I could remember them doing the floors originally with this; it can't be used over another paint product. The change to the floor is particularly pleasing but this has simply made us realise how the rest of the floors need similar attention. Unfortunately, furniture etc all needs to be removed, the weather needs to be right, and the floors need 24 hours to dry once painted, so this combination of events is not easy to accommodate outside of closing for a day. In winter, when this might be possible, the weather is too cool and the shellack takes longer to dry or cure. So, until next Easter....!

We have been pleased to host another **wedding ceremony** this past weekend and the garden is looking beautiful, despite the continued dry weather. Mark and Anthony have filled the garden beds with many varieties of flowering plants and with Helene keeping up the watering, the garden beds are in splendid form. This was a delightful occasion, and we hope the day contained many wonderful memories for the lovely couple.



The warmer dry weather also makes it a pleasant treat to take your lunch or afternoon tea on a Sunday, in the garden. We were pleased to welcome some visitors during this last week who spent nearly all day with us because they could relax and have their lunch in the garden.

We have also been pleased to host the **Cottage Craft skills workshops** over this past month. Felting, macro-photography, embroidery, Sashiko, basket making, acrylic painting, all with great groups of enthusiastic participants. There are additional workshops in May.



May is a quieter month, activity wise, at the museum with several members taking some well-deserved holidays. In **June** we feature our first **Walk and Dine** event on the 7th and our **Wicker Workshop, Twining Vines**, on the 15th.

Don't forget, if you have a **spare couple of hours** each week, or month, we'd love to have you **volunteer with us** to keep the doors open and welcome visitors to the town. This is also our big fund-raising drive for the new building project as we head towards the end of the financial year. Remember, all donations are tax deductible, so there are good tax advantages from giving to this worthy community project.



Margie Wehner - President - 0408 409 842

Discover
THE MAGIC OF
YESTERYEAR

Spread over two acres this renowned museum features multiple dwellings, exhibits and displays which showcase the early pioneering days and heritage of the region. All set within lovely gardens in the heart of Jindera.

**OPEN
SEVEN DAYS**
Tearoom open
every Sunday
from 11am



JINDERERA
• PIONEER MUSEUM •

118 Urana Street, 15kms north of Albury
www.jinderamuseum.com.au
Entry fees apply

Open Hours
Daily - 10am to 4pm
Enquiries 0408 409 842



JINDERA PIONEER MUSEUM
PRESENTS

WALK & DINE

DOWN MEMORY LANE

A progressive and
somewhat mysterious
dining experience through
Jindera's main street,
starting and finishing at
the Jindera Museum
precinct.

SATURDAY JUNE 7 STARTING AT 6PM @ THE BLACKSMITHS

FIVE LOCATIONS AND FIVE DIFFERENT DISHES
SERVED WITH BEVERAGES INCLUDED

TICKETS \$110 PER PERSON, LIMITED TO 30 PEOPLE

BOOK VIA TRYBOOKING.COM

ANOTHER GREAT FONDRAISING EVENT BROUGHT TO YOU BY THE
JINDERA PIONEER MUSEUM

Classic Car Show and Concert Invitation to Jindera!

REV up your plans for **SUNDAY 4TH MAY!**

We have invited classic car enthusiasts from multiple clubs in the local region to bring their loved and valuable cars to display them in the rambling country garden of the farming property, "The Elms" Walla Walla.

Buy and sell at the **Garage Sale EARLY**, then come out and join us for a relaxing day to wander around the garden and view the cars, with ample time to purchase a drink from the bar and a delicious, boxed lunch or a sausage or steak from the barbecue. Then casually sit around a water feature performance-space on haybales and enjoy a two hour concert from a live band playing favourite Rock and Roll songs from the Sixties and Seventies.

This is a great way to enjoy an easy and informal family day or celebrate an early Mother's Day.

All proceeds are going towards the **Burrumbuttock 150th Celebration weekend in October.**

Where: 21 The Elms Lane, Walla Walla 2659 (directions below)

When: Sunday 4th May - 11am to 3pm

Lunchtime concert starts at 12.30 (feel free to bring your own chairs to this area of the garden) - Food and beverages available
Barbecue - Delicious boxed lunch - Full bar facility - Tea/ coffee/ sweet treats - **Entry**, which includes the live band concert -

\$12 adults - \$8 concession. Children free

Concert - With **Phillip Stone** rocking his guitar and backed by his group **The Hipnotics**, the band will play for two hours the best rock and roll songs from the sixties and seventies.

Directions: From Walla, turn west at Lieschke's Garage onto Queen Street, which becomes the Walla West Road. Follow the road until the end of the bitumen, turning left at a "Y" junction, following signs "Walla West Rd" Continue to a "T" intersection, turning right, sign posted "Walla West Rd" Follow the road to the top of the hill, onto "The Elms Lane" (sign posted) The driveway to the house is on the left, a stone faced ramp, where there will be marshals to assist with further directions.

Contact: Elizabeth Newton Mobile: 0418 243 157
Email: elizabeth.h.newton@gmail.com

Jindera Waste Facilities OPENING TIMES

- ♦ Wednesday 2pm - 5pm
- ♦ Saturday 9am - 12pm
- ♦ Sunday 2pm - 5pm

Council **does not accept** hazardous wastes,
chemical drums (except as arranged on drum muster days)
or animal carcasses.

Charges apply for some waste items

The Jindera waste facility is located at
148 Dights Forest Road

For further info go to

<file:///C:/Users/julia/Downloads/Waste-Facilities-Opening-Times-Charges-and-Accepted-Waste->



BOOK HOUSE

at Jindera Anglican Church

If you would like something to read feel free to take
a book from out of the little 'book house' in front of

St Paul's
Anglican Church.



Also if you have
books you no
longer want you
can place them in
here for others to
use and read.

You can pop down
anytime to check
out the books that
are currently
available.



Hume Bank Limited ABN 85 051 868 556.
AFSL and Australian Credit Licence 244248.

Jindera branch
83 Urana Street
Open Monday, Wednesday & Friday
9am to 5pm (closed 1pm to 1:45pm)

1300 004 863
humbank.com.au

JINDERA NEWS - CONTACT US ON: jinderanews@ruralcarelink.org.au

ANXIETY LIVES IN THE BODY. SO DOES RELIEF.

Stretch, Relax & Rebalance

Reset your nervous system—no pressure, just presence.

**1-hour sessions designed for calming your body,
quieting your mind, and finding stillness.**



**Further information 0402 009 269 or
email office@blmc.com.au
Held at the Jindera Co-Work Space**

bjelkie.com.au

**WEDNESDAY
7.30PM &
SATURDAY
8.00AM**

Carrick

Real Estate

ALBURY - WODONGA

- Family Owned and Operated since 1990
- Sales & Rentals – Residential, Commercial & Rural

SUSAN CARRICK 0407 600 210

TERENCE O'SHAUGHNESSY 0414 270 084

email: sjcarrick@bigpond.com.au

Happy Campers ❤️ the Jindera Reserve

Primitive camping at the Jindera Recreation Reserve has been very popular. All shapes and sizes of vehicles turn up along with the odd tent. The grounds provide plenty of space which is what these travelers want. Many of the vans are fully self-sufficient and these people are looking forward to the new dump point being established. People who stay longer than one night enjoy all that Jindera has to offer with the shops, the Museum, service station, eateries and the Op Shop. Jindera's economy benefits. Donations are also made which is voluntary. This money will help with adding to the facilities.

Sandra & Bill - Rodney & Jeannette

Sandra & Bill from Dubbo travel with friends Rodney & Jeannette from Condobolin around 6-7 weeks at a time since 2016. Their biggest trip was to Cairns and Darwin. They enjoy staying at the little places and the outback where everything is not the same. Their philosophy is to have these adventures while they can. It was a random choice to come to Jindera. They enjoy supporting the local businesses. Jindera is a friendly place with the camping grounds well set up.



Greg and Yvonne

Greg and Yvonne are from Goulburn and are travelling for 4-5 months wherever the fancy takes them. They have enjoyed the Jindera area and all it offers them.



Michael and Phillipa

Michael and Phillipa from Penrith are return visitors and love the proximity to Albury. Their biggest trip was to the Eyre Peninsula. They were very impressed by the Pub meals.



Martin and Dorian

Martin is from Melbourne and Dorian is from Adelaide and they travel together but in separate vehicles for 9 months of the year following the Rock and Roll festivals, rallies and events. Wiki Camping gave good reviews of Jindera and the other main attraction was the Commercial Club in Albury which has rock and roll dances every day. A highlight of their time here was the visit to the Museum for morning tea, 2 hours looking around then lunch. Apparently, the tearoom's carrot cake made by Sandra was the best Dorian has ever tasted in all her travels. They also found the Museum volunteers super friendly.



The Kelly Family

Nick, Kaz, Banx and Knux Kelly are travelling around Oz from Perth WA to wherever the road takes them with no end date. They found the Jindera reserve on Wiki Camp and they had a fantastic stay here for 4 nights.



You can find out more about WikiCamps Australia at <https://www.wikicamps.com.au/>

JINDERA COMMUNITY FORUM

Next Meeting is at the Jindera Community Hub (entry via rear carpark) on
TUESDAY, MAY 20 , 2025

7:30pm

Items for the agenda are welcome by emailing below.



Come and join a group of locals who are interested in our community and its people, and who would like to help improve the facilities our community offers to both visitors and residents alike.

WHAT DOES THE FORUM DO?

The Forum holds community meetings which are open to residents of Jindera to attend and discuss what is happening in Jindera, as well as consider the future of Jindera.

Meetings are generally held bi-monthly on the third Tuesday
in February, April, June, August and October.

The Forum is able to put forward ideas and comments to Greater Hume Council on issues facing our Jindera community, facilitate direct discussion with Councillors who are in attendance at regular meetings, in addition to holding special meetings relating to specific issues.

For more information contact:

jinderacommunityforum@gmail.com



We would love to hear from you
if you have any news of interest
to our local community!

Please email your article to
jinderanews@ruralcarelink.org.au or
to Rural Care Link, The Jindera Hub,
Urana Street, Jindera



Who cares?
Could you?
Become a foster carer today
Call (02) 6055 8000 or scan





Meals on Wheels: Nutrition, Safety, and Support at Your Door

Meals on Wheels, “*More than just a meal*”—it provides a vital welfare check and connection for people living at home who need extra support.

Every delivery includes a balanced meal tailored to the needs of older people and those recovering from illness or surgery. But the service is just as much about checking in as it is about feeding someone.

Sconversations

Jindera Residents if you are interested in us starting a **SONCEVERSATIONS** group in Jindera, please let us know! Call Sue on 02 60363677.

In the meantime, you are more than welcome to join us in Walla! Hosted weekly at the Walla Walla Community Hall on Tuesdays from 11.30 to 3pm. Why not join us for a Scone, a cuppa and a chat! Great company, shared stories and a few laughs as well!

Welfare Checks - Our friendly volunteers are trained to look for anything unusual. If a client doesn't come to the door, seems confused, unwell, or has changes in their usual routine, the team takes action. This may mean calling a family member, a health service, or emergency services. For many clients, the person delivering the meal



is the only face they see all day. That quick conversation or friendly greeting is more than social - it's a safeguard. It provides comfort to clients and reassurance to their families.

Supporting Independence - Meals on Wheels helps people stay in their own homes for longer. Having a reliable meal service reduces the risk of malnutrition and supports recovery and long-term health. When combined with daily welfare checks, it becomes a lifeline that supports safe, independent living.

There are **NO CONTRACTS**. You can have meals when you need them or take a break anytime.

A Local Service You Can Trust - Home Support & Meals on Wheels Greater Hume Area coordinates this service for people aged over 65 across our region. We work closely with **My Aged Care** to make sure people get the support they need, when they need it.

We can also help you with **Domestic Assistance** and **Social Support**. For more information, to access service or find out more, you can call us on **02 60363677** or contact My Aged Care on 1800 200 422 or online at www.myagedcare.gov.au

Home Support & Meals on Wheels Greater Hume area
- supporting health, safety, and connection.



Community Feedback Form

I am looking forward to seeing _____ get use out of the complex **helping people gain skills**

- | | | |
|---|--|---------------------------------------|
| <input type="checkbox"/> Jindera Tennis Club | <input type="checkbox"/> A Cricket Club | <input type="checkbox"/> Art Groups |
| <input type="checkbox"/> Jindera Football Club | <input type="checkbox"/> A Mens Shed | <input type="checkbox"/> Child Care |
| <input type="checkbox"/> Jindera Netball Club | <input type="checkbox"/> A Mothers/Playgroup | <input type="checkbox"/> Girls Sports |
| <input type="checkbox"/> Other: _____ _____ _____ | | |

I think the community sports complex will encourage more:

- | | | |
|---|--|--|
| <input type="checkbox"/> Community playing sport | <input type="checkbox"/> Local Events | <input type="checkbox"/> Interest Groups |
| <input type="checkbox"/> Community engagement | <input type="checkbox"/> Town Meetings | <input type="checkbox"/> Family Supports |
| <input type="checkbox"/> Other: _____ _____ _____ | | |

General Feedback:

Name: _____

Email: _____

Affiliation: _____

- ☐ I consent to be added to the communication list and agree to receive updates and announcements. My information will only be used for this purpose and will not be shared. I can unsubscribe at any time.



**ST PAUL'S
COLLEGE**
WALLA WALLA, NSW

EXPLORE AND SEE THE DIFFERENCE

Discovery Day - Friday, 1st August

Tour our learning facilities, boarding,
agriculture and equine at 9am - 10:30am



Year 5 students enjoy
"Student for a Day"
experience

Scan QR code
to receive more
information, or
call 02 6029 2200



Offering day & weekly boarding

www.stpaulscollege.nsw.edu.au



McMillan Electrical

Craig McMillan
All Electrical Services

PO Box 477, Jindera, NSW

mcmillanelectrical44@gmail.com

0418 966 207

NSW License 151911C
VIC License REC-31010



Quality Meat & Personal Service
– Bulk Meat Specials –

Brad & Tina Taylor
Shop 7, 87 Urana Rd,
Jindera, NSW 2642 (02) 6026 1886



Lester & Son
FUNERAL DIRECTORS

A tradition of personal, professional care since 1907



Albury

359 Wantigong St,
North Albury

02 6040 5066

Wodonga

49 Thomas Mitchell Drive,
Wodonga

02 6056 1700

www.lesterandson.com.au

All Hours | All Areas | Pre-paid Funerals

BLD Machining

CNC MACHINING FABRICATION & WELDING

Precision:

Milling, Boring & Screwcutting,
Repairs, Maintenance & Modifications
to all plant & equipment

Guaranteed fast and professional service.

Phone Bruce:

0448 790 666

6 BEGG DRIVE, JINDERA

*Fixing the old and broken, designing
and manufacturing the new!*

Jindera Community Garden (JCG)



We are a social group who are creating a garden for EVERYONE to enjoy. Check our news on Facebook, and read *here* each month for updates. If anyone has ideas or suggestions, please let us know.
Phone or Message - Eileen at JCG on Ph: 0400 023 290 or email jinderacommunitygarden@gmail.com.

Memberships

You can become a full member without any obligations.
You can pay at the Hume Bank to ACC. 1112 999 BSB. 640000

OR

Come down to our
Mother's Day Cake Stall
at IGA
8am - Saturday May 10th



Gardeners Coffee Mornings

Even though we may not be doing a lot of activities in the garden at the moment, our group has met at Fox and Brew several times for our social outings.



This is where we do a lot of discussing about cake recipes and what other social events we may be able to do.

If you would like to join us, feel free to join in and we can message you the times we meet which is always in the mornings.

Every Little Bit Helps

Community Garden is strongly in need of any little help we can get. Just go down anytime that suits you; and you can help tidy things up in the garden. Morning times you may see someone down there for a chat.



MOTHER'S DAY CAKE STALL



on
SATURDAY 10th May
8.00am
outside IGA



Raffle Tickets will be Available



**Please come down and support your
JINDERA COMMUNITY GARDEN**

JINDERA COMMUNITY DIRECTORY

| | | | |
|--|----------------|--------------------------------------|----------------|
| Anglers Club | 0427 238 281 | Morgan Country CAR CLUB | 0428 401 991 |
| Friends in Action (Caritas) | 0438 262 480 | Multi Purpose Stadium Committee..... | 0407 357 082 |
| Greater Hume Children's Services | 1800 954 999 | Netball Club..... | 0407 186 073 |
| Community Forum | 0498 092 200 | OP SHOP | (02) 6026 3001 |
| Conway Printing..... | 6026 3611 | Pony Club | 6026 3484 |
| CWA | 0400 490 992 | Pre School..... | 6026 3468 |
| Football Club..... | 0427 253 587 | Recreation Reserve | 0438 263 417 |
| Friends of Jindera Wet Lands..... | 0423 204 263 | Rural Care Link (RCL) | 0475 594 073 |
| Golf Club..... | 0418 690 510 | St Johns Lutheran School..... | 6026 3220 |
| Jindera Lutheran Church..... | 0438 263 417 | St Mary MacKillop College..... | 6045 9422 |
| Jindera Pioneer Museum | 6026 3622 | St Paul's Anglican Church..... | 6040 6457 |
| Jindera Public School..... | 6026 3280 | Swimming Pool | 6026 3900 |
| Jindera Post Office..... | 6026 3201 | Tennis Club..... | 0412 314 617 |
| Meals on Wheels | (02) 6036 3677 | | |

COMMUNITY MEETING

JINDERA COMMUNITY HUB

(83 Urana Street—entry via rear carpark)

TUESDAY, MAY 6 at 7:30PM

This second meeting is for all **community groups** or **individuals** who may still be interested in having input into the plans for a new community building which is proposed for use by the **Jindera Football/Netball Club** and the **Jindera community** in general.

A set of model plans have been on display at the Post Office for all to peruse, and now we are looking for any further comments and suggestions on the structure and content, as well as feedback on the project as a whole - a feedback page (see page 26) is also included in this publication.

Please come along and take this second opportunity to voice your opinion.

CAKE STALL

in front of Jindera Post Office

SUNDAY, MAY 4



Donations of baked goods or produce would all be gratefully received for the next JMPHC fundraising effort at the **Jindera Community Garage Sale** day.

Enquiries to **Kathy Anderson** on **0407 357 082**
or **Pat Hayes** at the Post Office



Jindera Female football

2026

Join us in building a strong, competitive team for 2026.

Whether you're just starting out or have years of experience, we have a spot for you!

We're forming teams for the following age groups:

U12 - U14- U17 - OPENS

Our training days will be on Monday and Wednesday nights and the games are held on a Sunday.

Please register your interest and Be Part of the 2026 Season!

We will look at training to begin in September

**For more information, contact us
via FFCjindera@gmail.com call 0419 332 314
or check out our [Facebook](#) page.**



Jindera CWA News

May 2025

Jindera CWA members decorated the cenotaph for Anzac Day with hand knitted red poppies.

RED POPPIES symbolise

REMEMBRANCE, RESILIENCE and HOPE

and commemoration of the sacrifices made by soldiers who lost their lives in conflict.

Jindera residents may think the War Memorial seems to have been damaged, but War Memorials can take the form of a pillar or column, in particular, a pillar that looks to have been broken off is often used, as with the Jindera War Memorial. The broken pillar symbolising lives that have been cut short.

LEST WE FORGET.



Poppies around cenotaph, showing broken pillar

Members of the Jindera CWA welcomed everyone for a cuppa at the School of Arts hall after the 10.30 service.



THANK YOU TO EVERYONE WHO SUPPORTED US.

DATE TO REMEMBER.

The Annual NSW CWA CONFERENCE being held in **Wagga Wagga** from **18-22 May**.

Several of the Jindera members will be attending.

Yours in CWA Friendship,

Bev. Blair

Publicity Officer.



Jindera CWA President, Chris McIntyre
baking scones for Morning Tea – Anzac Day



Greater
Hume
Council

Council News - Summary of April meeting

At the April Council meeting some key decisions for our community were made.

At the meeting Council resolved to –

- Endorse the Greater Hume Council Community Strategic Plan 2025 -2035. The final Plan is available on Councils website here – <https://shorturl.at/FYBLp>.
 - Execute the lease between WAW Credit Union and Greater Hume Council to formalise the occupancy of the building at 76 Commercial Street, Walla Walla.
 - Place the draft Safe Arrival and Transportation of Children Policy – Centre Based Care on public exhibition for 28 days. This is a new policy that outlines Greater Hume Children Services' standards to ensure the safe transportation of children enrolled in our Services. To have your say on the policy, click here – <https://shorturl.at/Zzhxy>.
 - Approve the proposed road names, Bethlehem and Katarina for use in Jindera Street, Jindera Subdivision and place the names on public exhibition for 28 days. The exhibition period will begin this week.
 - Approve the proposed road names, Mickan, Zilius and Schroeter for use in Commercial Street, Walla Walla Subdivision and place the names on public exhibition for 28 days. The exhibition period will begin this week.
 - Place the proposed naming of the bridge over Wantagong Creek to Oliver Killalea Bridge on public exhibition for a period of 28 days. The exhibition period will begin this week.
 - Place the Bushfire Prone Land Map and Draft Bushfire Mapping Policy on exhibition for 28 days. The Bushfire Prone Land Map has been updated to include bushfire prone vegetation and grassland areas and the purpose of the policy is to formalise Council's commitment to regularly review and update the Bushfire Prone Land Map every five years, in line with legislative requirements and best practice risk management. The exhibition period will begin this week.
 - Adopt the variation of the scope for the Greater Hume Council Settlement Strategy in order to incorporate the expansion of industrial land and employment opportunities within Jindera.
 - Place the Greater Hume Shire Council Section 7.12 Local Infrastructure Contribution Plan 2025 on public exhibition for a period of 28 days. This works schedule within this Plan has been updated, outlining the projects that are proposed to be funded from these contributions. The exhibition period for the Plan will begin this week.
- For more information on these decisions and to read the full Council minutes from the meeting, click here – <https://shorturl.at/Rqwxxy>.

JINDERA STORYTIME 2025

FROM 11AM

19 FEBRUARY
19 MARCH
16 APRIL
WEDNESDAY 21 MAY
18 JUNE
16 JULY
20 AUGUST
17 SEPTEMBER
15 OCTOBER
19 NOVEMBER
17 DECEMBER



123 Anywhere
St. Any City



Are you heading away and need care for your pets and property?

The Good Neighbour can help you!

Whether you're going away for 1 night or a few weeks
The Good Neighbour has you covered.

We look after animals of all sizes and have a special interest in caring for horses.

We provide peace of mind so you have the freedom to enjoy your holiday knowing your property and pets have been taken care of and loved in their own environment just as if you're still there.



For more information head to our website:
thegoodneighbour.com.au

Servicing Border communities since 2012.

Follow us on social media



Leanne de Hennin

0411 496 062

leanne@thegoodneighbour.com.au

 **COUNTRY WOMENS ASSOCIATION OF NEW SOUTH WALES**

 **Fundraise to help support various causes**

Learn something new 

 **Enjoy a wide range of activities**

We'd love you to join us

 Find your local branch at www.cwaofnsw.org.au/branches

WALLA WALLA COMMUNITY MEN'S SHED INC
TEA & COFFEE MORNINGS @
WALLA WALLA LIONS COTTAGE
45 COMMERCIAL STREET
MONDAY @ 10.00am EACH WEEK
COMMENCING 10th FEBRUARY 2025



Gold Coin Donation

CONTACT

TED ACKERLEY MOBILE:0410594044



- your local Not-For-Profit Charity, right in the heart of Jindera!!

Running for over 30 years, providing multi-level supports to schools, organisations, community groups and projects and providing personal support in times of need.



Rural Care Link (RCL) is looking to create a volunteer

COMMUNITY ASSIST TEAM

made up of local residents, who are ready to support others in our community.

We would love you to join our team!



To become a 'COMMUNITY ASSIST TEAM' volunteer:

Pick up and fill in an **Application Form** and tick the areas of support that interest you.

Application Forms are available from:

The OP SHOP

Tues - Fri 10am to 4pm (closed for lunch 1.00-1.45) - Saturdays - 10am to 1pm

The RCL Office

9am to 2.30pm (closed for lunch 1.00-1.45) - Tuesdays/Wednesdays/Thursdays

OR

Phone RCL Office - 0475 594 073

Email Karen - RCL Office - office@ruralcarelink.org.au

NEW HOMES | RENOVATIONS | EXTENSIONS



0401 552 942 | TRAVIS@TJBUILDING.COM.AU | LIC NO. 457875C 

JINDERA HAIR HEALTH & BEAUTY

TEL: 02 6026 3434

91 Urana Street, Jindera



Plumbers, Drainers & Gasfitters
Bobcats, Excavators, Tippers & Trenchers
Farm Water Supply
Reticulation, Trenching
Troughs, Tanks & Solar Pumps
Septic Systems
Septic & Trade Waste Pumping
Sand & Gravel Cartage
Grader & Water Cart Hire

**If you want to dig it, pipe it,
Pump it or fix it – we can do it!**

Mobile: 0403 191 780

www.blueysplumbin.com.au

St Paul's Anglican Ladies Knitting Group

Sit "n" Knit

Tuesday 10.00 to 11.30am

Jindera Community Hub Library

Join us to knit for a charity or bring
your own knitting project
(if you can't knit we'll show you)

All Welcome

For more information phone 0400 424 437



"FOR ALL YOUR PRINTING REQUIREMENTS"

- Business Cards • Letterheads • Books • Raffle Tickets
- Complete in-house design service • All business stationery
- Invoice Books • Stickers • Brochures • Leaflets

(02) 6026 3611

ADVERTISEMENT



SUSSAN LEY
FEDERAL MEMBER FOR **FARRER**

Putting Farrer First

Delivering for Farrer.

From childcare centres, local road and bridge upgrades, health services, mobile phone towers and much more.

Over one billion dollars to local infrastructure projects and programs delivered since 2020.

 517 Kiewa Street Albury, NSW 2640  6021 3264  farrer@aph.gov.au  sussanley.com  SussanLeyMP

Authorised by S. Ley MP, Liberal, 517 Kiewa Street, Albury 2640.

Jindera Cottage Crafts Group

Right next door to the iconic Jindera Pioneer Museum, on the site of the Old Flour Mill, is the Jindera Cottage Crafts Group shop (JCCG). Housed in the old stables, since the 1970s, the room has been packed with local, quality, affordable crafts.

May is a busy month in Jindera and for the craft shop volunteer members. Open every Sunday from 11am until 2pm, pop in & grab a handmade gift. If the flags are out, the craft shop is OPEN.

Following is a brief outline of some of our very crafty members.

Diane McElwaine. Diane knits ladies, gentlemen and children's gloves & beanies. Just the thing for winter which is fast approaching. Diane also knits cosy tea cosies.

Rhonda Wallace has been a hobby painter for 15 years. Rhonda first learned to paint, using oils, when she was living overseas. Since returning to Australia she started using acrylics and enjoys using this medium.

Judy Gray has been a member of the Jindera Cottage Craft Group for around 15 years. Judy enjoys a variety of crafts including: wool embroidery, knitting, sewing, beading and card making. Judy has a range of hand crafted items in the shop, including a wool embroidered hot water bottle cover, eco friendly cotton dishcloths, coat hangers and cards. - **May roster:**

Sunday 4 May TOWN GARAGE SALE open 10-12 Rhonda

Monday 5 May lunch at JPM 11-1 pm Trish

Tuesday 6 May lunch at JPM 11-2pm Vivien

Saturday 10 May sashiko & macro workshops open 9-3 pm Vivien

Sunday 11 May 11-2 pm Mothers Day Karla

Saturday 17 May sashiko & macro workshops open 9-3 pm Vivien

Sunday 18 May 11-2 pm Rhonda

Sunday 25 May 11-2 pm Trish



Pictured here is a small sample of the handmade crafts available to purchase.

JCCG is halfway through the series of funded skills based workshops. Creative embroidery, wet felting & basket weaving were all sold out successes.

Some of the feedback comments: ... *really enjoyed the workshop today.. ... it was funenjoyed the workshop and am happy with the way my pot and poppy turned out.*

The next workshops will be acrylic painting (sold out), Sashiko mending (sold out) & macro photography (one spot left on Saturday 10 May).

All workshops are held on the grounds of the **Jindera Pioneer Museum** and delicious **morning or afternoon tea is included** (scones with jam & cream!)

Stitch and Chat Craft Group

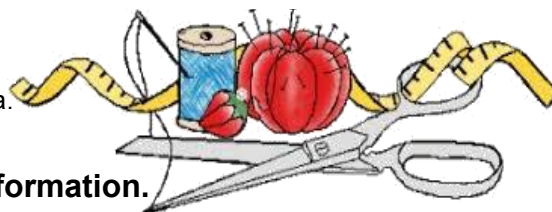


This group meets on the first **Wednesday** afternoon of each month at **2.00pm** at the Jindera Hub.

All welcome, just bring whatever you are working on & come along for a chat and cuppa.

We usually finish around 3.30pm

Judy Gray - 0418 617 385 for further information.





NA Auto

AUTOMOTIVE ELECTRICAL
SPARE PARTS AND ACCESSORIES

Neil and Kathy Anderson
94-96 Urana Street PO Box 27 Jindera NSW 2642
Ph: 02 6026 3391 Fax: 02 6026 3722 Mob: 0428 578 061
Email: sales@naauto.biz Website: www.naauto.biz



Jindera Vet Clinic

Phone: 02 6026 3277 Email: clinic@jinderavet.com.au


Hours: Mon-Fri 8.30am-6pm
89 Urana Street, Jindera NSW 2642

Daryl Klein B.V.Sc.(Hons) Veterinary Surgeon
Brigit Pitman B.V.Sc.(Hons) Veterinary Surgeon

With the bonus of wonderful staff!

FUGE EARTHWORKS PTY LTD

SCRAPER DOZER LOADER EXCAVATOR
GRADER TIP TRUCK BOBCAT ROLLER



- Dam Construction or Enlargement
- Site Excavations, Drainage
- Driveways, Entrances
- Bulk & All General Earthworks

PAT FUGE 0447 770 649

375 Molkentin Road, Jindera NSW 2642




Healthy Ageing Programs for Independence (HAPI)

HAPI MOVERS

 Jindera Community Hub

 Ruth Dunn - (02) 6026 3806

 Friday - 10am  Gold coin

All you need is comfortable clothes, supportive shoes, a bottle of water, and your laughter.

 For more info scan the QR code or visit www.activeandhealthy.nsw.gov.au to discover a group near you, or contact the Healthy Ageing team on 0409 781 326.



Civil Celebrant

- Judy Gray -

Weddings • Baby Namings • Funerals

 Conducted in Style 

MOBILE: 0418 617 385

Committed to our region.



Justin CLANCY MP
MEMBER FOR ALBURY

Authorised by Justin Clancy. Funded using Parliamentary Entitlements. 02 6021 3042 | justinclancy.com.au







Jindera Tennis Club

By Warwick Horsfall - President

THE FIRST 10 YEARS

Recently there has been conjecture that the Jindera Tennis Club was approaching its **CENTENARY YEAR**. Certainly, the date embroidered on the club's playing shirts indicate that 2026 would be the centenary year. Other dates suggested were this year and 2027 which would be **100 years** since the Hume Tennis Association commenced.

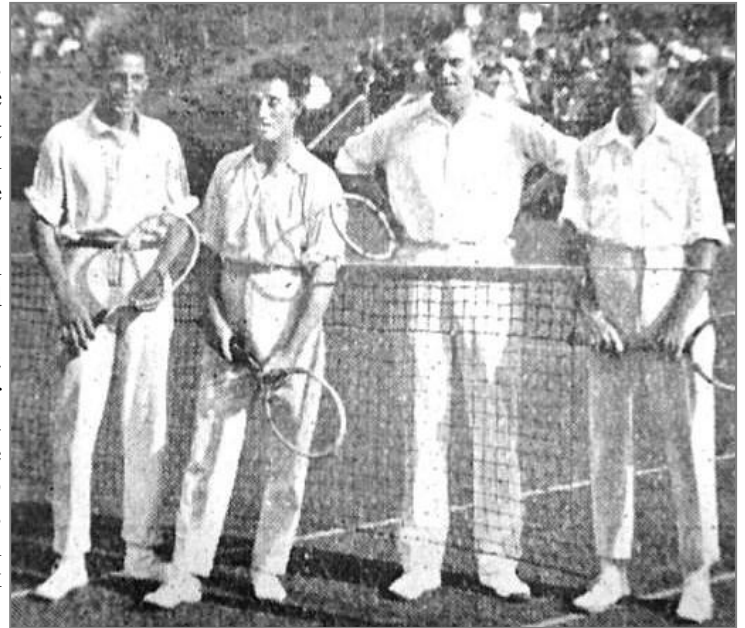
In seeking to establish which year, a search of old newspaper articles confirmed that the club commenced well before this date; **28 years before in fact in 1897**. Most of the information comes from the *Albury Banner & Wodonga Express* and the early days of the *Border Morning Mail*. Entries in these publications were by a 'Jindera correspondent' who provided information on the comings and goings in town. Clearly there were no privacy laws back then as information included who was sick, who had an accident, who had a new car, who was on holidays, who was having visitors, etc. A bit like Facebook really.

From the research the earliest reference to the club was late in 1896 when they reported that there was "talk of a meeting to form a tennis club". The instigator was apparently Carl Pagenstecher who was a teacher at the "German school". Pagenstecher subsequently called a meeting at the School of Arts in February 1897, at which it was reported about 30 people attended. It was decided at the meeting to form the Jindera Tennis Club, and "the colours to be red, white and blue". When the *Border Morning Mail* reported on the 50th anniversary of the club it wrote "Arrangements were made to lay down a court in the recreation park by working bees and procure a net and four racquets from Sydney. Balls were used until the covers came off, and then they were used until they burst."

The club didn't muck around they wrote on 12th February that "the tennis ground is being cleared in the park this morning" and a week later that "the tennis court was opened yesterday in the Jindera Park." It was agreed in March that Wednesday afternoons would be the time for playing tennis. The correspondent then reported on several occasions that there was great interest in the game, and it was "becoming quite popular."



Fred Kalms playing a low backhand shot during a tennis match - 1930



1924 Davis Cup

Kalms, Willard, Schlesinger and Patterson.

1897 was also significant for tennis in Jindera as it was when **Frederick Kalms** was born. He became the NSW state tennis champion in 1926 and 1928 as well as a semi-finalist in singles at the 1924 Australian Open and runner-up in the doubles final in 1925. He also played **Davis Cup for Australia** in 1924. His Wikipedia page says he had a "good all-round game but was marred by a weak forehand".

A 13-year-old Frederick appears in the picture on the *Historic Places* plaque at the entrance to the current Jindera tennis courts.



It is unclear if Pagenstecher was the club's first President but he relocated to the Victorian western district in 1907. He returned to the Jindera area later following a court case involving a student, of which he was acquitted. Pagenstecher went on to spend 20 years as President of the Hume Tennis Association. William Keen is the first recorded President of the club in 1900-01 and he served in the first World War. His name is on the Jindera War Memorial.

Details of later years are sketchy but at the end of 1903, William Kirby Barnes was elected President of the club. The business of the day was "renovating the court and grounds" and that "a few balls are required." What is significant about Barnes is that he held the position of President for 28 years and Secretary for three years. Barnes seems involved in everything including Trustee for the Recreation Reserve and School of Arts. He also ran for Council. A butcher by trade he also owned land around Jindera and had a piggery. An upstanding citizen although he was done for grazing cattle on the Town Common and for selling meat unfit for human consumption. He died in 1954 aged 87 and is buried in Sydney.

(more Tennis Club page 37)



William Barnes is the gentleman sitting in front of the bass drum in this (undated) picture of the Jindera Band. It was reported in August 1906 that “tennis, which is, barring the band, the most live body of our village.”

The ‘correspondent’ wrote more on the tennis club during 1904. He reported in January that “tennis is the popular outdoor exercise now” and in February that “it was decided, owing to the number of members, to build another court, as many members could not get any practice”. In March he reported that members “are daily at the court keeping in form in the event of any neighbouring club swooping down on them for a game unawares.” This is a reference to how competitions were conducted at this time. Prior to 1927, competition between clubs was by invitation (or challenge) with social events organised around them.

They must have had a run in with local cricket in 1906 judging from reporting around this time. In January he wrote “tennis getting a real hold here. Cricket is quite dead.” In March that “cricket here is a past item” and “tennis is all the rage”. It didn’t end there. In November he reported “although Jindera has had some good cricket teams on the field in previous years, the tournament that is being played at the present amongst members of the Jindera Tennis Club is creating too much interest for anyone to think of playing cricket or anything else but tennis”

followed in December by” the sport has quite knocked the bottom out of the Cricket Club.”

In the 10th year of the club, it was proposed to erect wire netting around the courts. Upon hearing this Mr G Dight from Albury donated materials, as well as net posts, as he was removing his court. Consequently, as a result “the courts will compare with anything outside the metropolis”. The renovated courts were opened in May with a scratch match played by local players and that “about 100 young and old attended.”

So, its official, the club has missed its centenary but can look forward to its bicentenary in 2097.

Back to the present, the club conducted its AGM on 22nd April with President Warwick Horsfall, Vice-president Andrew Williams and Treasurer Sean Lethlean all re-elected for the coming year. Unfortunately, the club was unable to fill the Secretary’s position with the retirement of Jeff Donney. This is disappointing and it would be greatly appreciated if a community-minded person could come forward to help out the club by undertaking this role. If this is you, please contact **Warwick** on **041 231 4617**.



**Need extra support
finding aged care
services?**

Our care finders are here to help

1300 418 223



Marathon Health is a not-for-profit, registered charity delivering high quality health and wellbeing services to people wherever they choose to live. This service is supported by funding through the Murrumbidgee Primary Health Network as part of the Australian Government’s PHN program.

Hickory Hill Tennis Club

REUNION 2025

Calling All Former Members of the Hickory Hill Tennis Club!



Remember watering, rolling, bagging and marking the courts of a Saturday morning. The sport, friendship, fun and afternoon teas on Saturday afternoons during the summer?

It's been 30 years since the Hickory Hill Tennis Club closed.

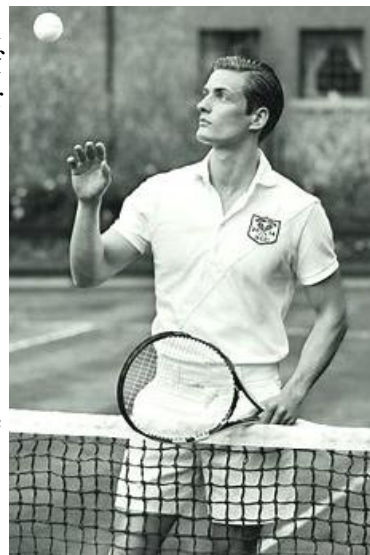
Former members are advised that a **Reunion Dinner** and **Unveiling of a Plaque** on the site of the Old Courts Hickory Hill Road will occur during the **October long weekend 2025**.

If you would like to attend the **Dinner on Saturday 4 October at 6:00pm**, and/or the **Plaque Unveiling on Sunday 5 October at 10:30am** you are requested to contact one of the following by **20 September 2025**:

Jennifer Christensen - 0418 449624 • Joan Lyons - 0427 298785
Peter Lyons - 0428 298785

The cost of the dinner at the Henty Community Club will be \$30 per person. A set menu with alternate meals of roast lamb and chicken mignon will be served. Special dietary requirements will be catered for on request.

Any photos or other memorabilia that you could contribute to a display ... even your memories please let us know!



PROBUS - April Update

The Next Step – Henty's Disability Personal Support Service

Introduction - **Probus** is a club for retirees and aims to promote growth, development and support for former professional and business people fostering the true spirit of Probus - FRIENDSHIP - FELLOWSHIP - FUN.

The Henty Probus Club meet on the 2nd Wednesday of each month. Membership is \$30 p.a.

Anyone from Jindera would be very welcome to attend our meetings.



The **Henty - Culcairn Probus Club** held its April meeting at **Henty Community Centre** on **Wednesday 9th April 2025**.

Longtime Henty resident Julie Colley gave the "5 Minute" presentation describing growing up in Newcastle where her father worked as an engineer for BHP and her mother was a nurse. Julie and her siblings had many outdoor experiences as children, and the family spent a lot of time at the beach in summer. Julie trained as a Music and English teacher at the Newcastle Conservatorium of Music and Newcastle Teachers College.

April's keynote speaker was Dylan Harrison (Hore), who, with his wife Rachael, founded **The Next Step** in March 2022 as a disability personal support service located in Henty. It is the only such service located between Albury and Wagga Wagga. The business began with one client but has expanded rapidly as families within the Greater Hume Shire who have a child with a disability, learnt of the services offered. Dylan's brother Daniel quickly joined the staff and now the organisation has 13 active support workers, of whom all but two live locally. The Next Step has 30-40 actively involved clients. Recently, through a working relationship with **Henty Respite Trust**, Avondale Place has become the hub for The Next Step's work.

As noted on its website The Next Step's "mission is to empower individuals living with disabilities, to live a fulfilling and meaningful life. Our mission is to create new and equal opportunities, to build life skills, friendships and improve overall capacity. We plan to do this by connecting with community, and providing quality fun-filled, group-centred and person-centred programs."

Programming has grown over the past three years and The Next Step now provides activities in the following areas: Community Access, Assistance with Daily Life, Short Term Respite at Avondale Place, Road to Independence Activities subsidised by Henty Respite Trust, Social Activities on Friday nights and Saturday, Social excursions for one or two days, Car Washing, and Aged Care Support. Those of us who patronise Henty's coffee shop in the morning regularly see the happy disposition of The Next Step participants as they gather to begin their daily activities.

If you are retired or semi-retired, Probus may be the social group for you. Contact **Beryl Meyer** at **0427 293 147** for more information. Our next meeting is **Wednesday, May 14, at 10 am** at the **Culcairn Bowling Club**.

PESTS?

Spiders, Termites, Rodents,
Carpet Beetles, Ants, Fleas
Wasps or **WORSE?**

We Can Help!

- Domestic & Commercial Pest Control
- Timber Pest & Building Inspections
- Termite Treatments
- Thorough Written Reports
- Free, No-Obligation Quotes
- All work Guaranteed

www.piantospestcontrol.com.au

office@piantospestcontrol.com.au

VIC Lic No. L005632 | NSW Lic No. 5091710

Jindera, Burrumbuttock, Holbrook, Albury-Wodonga,
Corowa, Rutherglen, Wangaratta, Howlong,
& surrounding areas.

Pianto's
Pest Control



(02) 6032 7137

MICK'S TREE HEIGHT REDUCTION & SHAPING SERVICES

SPECIALISING IN:

TREES - felling/lopping
/pruning & removal

**PRUNING &
STUMP GRINDING**
- hedges/bushes/shrubs
/roses & palm trees
(chipping available)

OTHER SERVICES -
gutter cleaning/
rubbish removal

Special
Discounts
for
Pensioner
Services

MICK: 0427 316 497



Jindera Village Post Office

For postal information and product specials

Bank with over 70 banks and financial institutions

Phone:
6026 3201



Jindera Country Golf Club INC.

We have seen some lovely golfing weather at the Jindera Country Golf Club, with high numbers in many competitions. The hard-working grounds crew have been improving some of the sprinkler systems and keeping the course in good order, despite the lack of rain.

The change to daylight savings now means that **Friday Chook run is now teeing off from 3:00 – 3:30pm** every Friday, all welcome to come and have a hit and enjoy some social time afterwards at the clubhouse.

With the **winter golf season** beginning in May the **Sunday competitions will now start at 11:30am – 12:00pm**. A working bee will be held on the first Saturday in May to have the club looking in top shape for the 2nd week of Ladies Pennant, which is being hosted at Jindera. Pennant will bring teams from Wagga Country Club, Wagga City club, Howlong and Thurgoonga Golf clubs to play, good luck to our Ladies team for the five-week competition.

The first round of club match play has been completed, which is a round robin competition where each rounds winner progresses to play a new player in the following round, until there are only two players left. Good luck to the players in the 2nd round.

Monthly medal winners:

March

Mens - Peter Penny Ladies – Rawinia Smithenbecker

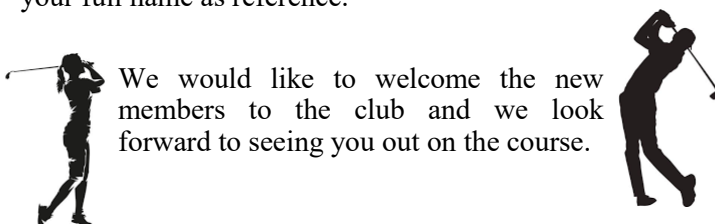
April

Mens – Jeff Donney Ladies – Judy Gerig

Ladies competitions can be played across the week. With a 9-hole competition on **Mondays at 8:30am**, beginners welcome, and 18-hole competitions on **Thursday and Sunday mornings**. Beginner lessons available.

Any members please note that **yearly memberships** fees for 2025 are **now overdue**.

Adults \$140, Juniors \$35. Please pay to: Jindera Golf Club, BSB 640 000, Account number: 111 096 047 with your full name as reference.



We would like to welcome the new members to the club and we look forward to seeing you out on the course.

SCORES Summary - April 2025

SUNDAY COMPETITION

SUN 30/3/2025 Stableford 12 Players

| Postn | Player | DLY Hcap | Gross | Nett | 18-Hole Result | 9-Hole Result FRONT |
|-------|------------------|----------|-------|------|----------------|---------------------|
| 1 | Peter PENNY | 19 | 82 | 37 | W \$30 | |
| 2 | Zach LOWEN | 22 | 92 | 36 | R/U \$10 | W,20,\$20 |
| 3 | Greg PRESTON | 16 | 80 | 35 | B | |
| 4 | Donald SINGLETON | 30 | 95 | 32 | B | |
| 5 | Daryl KLEIN | 24 | 82 | 32 | B | |
| 6 | Aaron JENNINGS | 22 | 82 | 31 | | R/U,19,2B |

SUN 6/04/2025 Stroke Monthly Medal 29 Players

| Postn | Player | DLY Hcap | Gross | Nett | 18-Hole Result | 9-Hole Result BACK |
|-------|-------------------|----------|-------|------|----------------|--------------------|
| 1 | Jeff DONNEY | 24 | 94 | 70 | W, Medal | W,44,\$10,B |
| 2 | Craig MCMILLAN | 8 | 78 | 70 | R/U \$20 | |
| 3 | Peter PENNY | 18 | 88 | 70 | B | |
| 4 | Simon COSSOR | 8 | 78 | 70 | B | |
| 5 | Garry SPURR | 19 | 90 | 71 | B | |
| 6 | Craig CHRISTENSEN | 25 | 98 | 73 | B | |
| 7 | Russell GUEHO | 20 | 94 | 74 | B | |
| 8 | Greg PRESTON | 16 | 90 | 74 | B | |
| 9 | Trevor FREEMAN | 19 | 94 | 75 | B | |
| 10 | Evan CHRISTENSEN | 54 | 129 | 75 | B | |
| 11 | Tony CORRIN | 13 | 88 | 75 | B | |
| 12 | Aaron JENNINGS | 23 | 99 | 76 | | W,44,\$10,B |

SUN 13/4/2025 Stableford 14 Players

| Postn | Player | DLY Hcap | Gross | Nett | 18-Hole Result | 9-Hole Result FRONT |
|-------|-------------------|----------|-------|------|----------------|---------------------|
| 1 | Garry SPURR | 19 | 79 | 38 | W, \$30 | |
| 2 | Greg PRESTON | 16 | 85 | 37 | R/U \$10 | |
| 3 | Robin WELDON | 21 | 71 | 36 | B | |
| 4 | Peter PENNY | 18 | 88 | 36 | B | |
| 5 | Craig CHRISTENSEN | 25 | 96 | 35 | B | |
| 6 | Zach LOWEN | 21 | 93 | 34 | B | |
| 7 | Peter YENSCH | 18 | 73 | 31 | | W, \$20,21 |

SUN 20/4/2025 PAR 5 Players

| Postn | Player | DLY Hcap | Gross | Nett | 18-Hole Result | 9-Hole Result FRONT |
|-------|-------------|----------|-------|------|----------------|---------------------|
| 1 | Daryl KLEIN | 24 | 90 | +3 | W, \$20 | W,+1 |
| 2 | Ian PERTZEL | 29 | 100 | -2 | R/U, B | |

Follow us on Facebook or our website at



www.jinderagolfclub.com

VETS COMPETITION – Wednesday morning – 9 Holes.

VETS Wed 26/03/2025 3 Ball Ambrose 18 Players

| Postn | Player 1 | Player 2 | Player 3 | Nett | Result |
|-------|------------|------------|------------|------|--------|
| 1 | B. HILL | I. PURCELL | D. CASTLES | 24.7 | W |
| 2 | J. MCMAUGH | M.CARMODY | B. VERBUNT | 27.0 | R/U |

VETS Wed 2/04/025 Stableford 16 Players

| Postn | Player | Dly Hcap | Nett | Result FRONT |
|-------|---------------|----------|------|--------------|
| 1 | Nev WINTER | 22 | 20 | W |
| 2 | Stan DUFFIELD | 26 | 18 | R/U |
| 3 | John WIESNER | 22 | 18 | |
| 4 | Don SINGLETON | 28 | 18 | |
| 5 | Bruce HILL | 20 | 18 | |

VETS Wed 9/04/025 Stableford 19 Players

| Postn | Player | Dly Hcap | Nett | Result BACK |
|-------|---------------|----------|------|-------------|
| 1 | Don SINGLETON | 28 | 22 | W |
| 2 | Nev BRAND | 20 | 20 | R/U |
| 3 | Ian PERTZEL | 28 | 19 | |
| 4 | Mark PEARSAL | 28 | 19 | |
| 5 | Peter PENNY | 14 | 17 | |

VETS Wed 16/04/025 Stableford 19 Players

| Postn | Player | Dly Hcap | Nett | Result FRONT |
|-------|--------------|----------|------|--------------|
| 1 | Mark PEARSAL | 28 | 23 | W |
| 2 | Ian PERTZEL | 28 | 18 | R/U |
| 3 | Nev WINTER | 22 | 17 | |
| 4 | Nev POWER | 12 | 17 | |
| 5 | P REID | 34 | 17 | |



Club President Robin (Strop) Weldon winning chook run again – ‘a hat trick’ – three in a row this month with Matt Klingsporn winning a ball.



Players Kate Wookey (ball winner), Daryl (Doc) Klein (winner), Ian Pretzel (runner up) and Russell Gueho (ball winner) after their games



Shayne McIntyre, Bruce Hill and Brendan Burt enjoying the atmosphere



Jason Steinke winner of another chook run

CHOOK RUN – Friday afternoon - 9 Holes STABLEFORD

Chook Run Fri 28/03/2025 – Stableford - 26 Players

| Postn | Player | Dly Hcap | Nett | Result FRONT |
|-------|-------------------|----------|------|--------------|
| 1 | Craig CHRISTENSEN | 25 | 22 | W \$40 |
| 2 | Damien PORTA | 26 | 20 | R/U \$20 |
| 3 | Peter PENNY | 19 | 20 | B |
| 4 | Brendan BURT | 21 | 20 | B |
| 5 | Walter PAECH | 44 | 19 | B |
| 6 | David PAECH | 26 | 18 | B |
| 7 | Simon COSSOR | 8 | 18 | B |
| 8 | Greg PRESTON | 16 | 18 | B |
| 9 | Robin WELDON | 20 | 17 | B |
| 10 | Matt KLINGSPORN | 23 | 17 | B |

Chook Run Fri 4/04/2025 - Stableford - 31 Players

| Posn | Player | DLY Hcap | Nett | Result BACK |
|------|----------------|----------|------|-------------|
| 1 | Jason STEINKE | 30 | 24 | W \$50 |
| 2 | Mick BEATON | 20 | 22 | R/U \$20 |
| 3 | Russell GUEHO | 21 | 21 | B |
| 4 | Kevin WALSH | 38 | 21 | B |
| 5 | Robin WELDON | 22 | 21 | B |
| 6 | Walter PAECH | 44 | 20 | B |
| 7 | Tony CORRIN | 14 | 20 | B |
| 8 | Wade MCPHERSON | 35 | 19 | B |
| 9 | Garry SPURR | 20 | 19 | B |
| 10 | James PHELPS | 49 | 19 | B |
| 11 | Peter PENNY | 20 | 18 | B |
| 12 | Cam BURT | 21 | 18 | B |

Chook Run Fri 11/04/2025 – Stableford - 25 Players

| Postn | Player | Dly Hcap | Nett | Result FRONT |
|-------|------------------|----------|------|--------------|
| 1 | Robin WELDON | 20 | 21 | W \$40 |
| 2 | Walter PAECH | 42 | 21 | R/U \$20 |
| 3 | Matthew GIDDINGS | 27 | 20 | B |
| 4 | Bruce HILL | 23 | 20 | B |
| 5 | Greg PRESTON | 15 | 18 | B |
| 6 | Trevor FREEMAN | 18 | 18 | B |
| 7 | Ian PERTZEL | 28 | 18 | B |
| 8 | Garry SPURR | 18 | 18 | B |
| 9 | Brendan BURT | 20 | 17 | B |
| 10 | Cam BURT | 20 | 17 | B |

Chook Run Fri 18/04/2025 – Stableford - 25 Players

| Postn | Player | Dly Hcap | Nett | Result BACK |
|-------|---------------|----------|------|-------------|
| 1 | Robin WELDON | 22 | 23 | W \$30 |
| 2 | Greg PRESTON | 17 | 22 | R/U \$10 |
| 3 | Ben COLQUHOUN | 30 | 21 | B |
| 4 | Peter YENSCH | 20 | 20 | B |
| 5 | Simon COSSOR | 9 | 20 | B |
| 6 | Kevin WALSH | 33 | 19 | B |
| 7 | Daryl KLEIN | 26 | 19 | B |
| 8 | Bruce HILL | 24 | 18 | B |

LADIES Sun/Mon

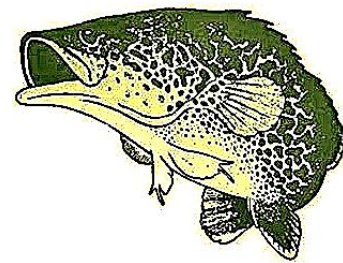
Ladies - Mon 31/03/2025 9 - Hole BACK

| Postn | Player | Dly Hcap | Nett | Result BACK |
|-------|--------------------|----------|------|-------------|
| 1 | Joan JAMISON | 46 | 18 | W |
| 2 | Marita CHRISTENSEN | 37 | 15 | |
| 3 | Judy ARENDARCIKAS | 54 | 15 | |
| 4 | Leanne QUINN | 54 | 10 | |

Ladies - Mon 7/04/2025 – Stableford 9-Hole FRONT

| Postn | Player | Dly Hcap | Nett | Result BACK |
|-------|-------------------|----------|------|-------------|
| 1 | Joan JAMISON | 47 | 23 | W |
| 2 | Judy ARENDARCIKAS | 57 | 18 | |
| 3 | Sonia STAPLES | 57 | 16 | |
| 4 | Virginia EBERT | 35 | 16 | |
| 5 | Leanne QUINN | 57 | 9 | |

JINDERA ANGLERS CLUB INC.



Anglers have been busy improving the clubhouse getting ready for the cold season !!

March comp has seen only 2 fishermen successful, Shammie with the biggest fish being a 61cm cod and Jacob Guy with the biggest bag of 4 cod over the three days

A few **donuts** were also awarded to Squeak, Chris, Kirsty and Laszlo.

Jindera Garage Sale is on **Sunday 4th May**, please come down to the Jindera Anglers clubhouse and support our famous bbq with buying something to eat or grab a drink (*eftpos available*).

A big **welcome** to all our **new members** taking advantage of the Special offering !! If you want more info please contact Kerrie.

The wood raffle was a great success for the club.

Congratulations to Trevor Lieschke for winning the wood. We will be running another wood raffle in the winter again !

Next comp is a closed competition at Walwa (fish between Jingellic to Tintaldra) Starts 4pm **Friday 23rd of May** with the weigh in at the Walwa boat ramp at 11am Sunday 25th.

For more information please contact **Kerrie Lynch** on **0427 238 281** or message us on [Facebook](#)

Tight Lines!





Jindera TerryWhite Chemmart Pharmacy

Shop 4&5, 82 Urana Street, Jindera, NSW 2642

OPEN

Monday-Friday: 9.00am to 5.30pm

Saturday: 9.00am to 12 noon

— OFFERING —

- ♦ Health Risk Screening Services
- ♦ National Diabetes Services Scheme
- ♦ Webstar packing
- ♦ Spotcheck (Skin Cancer Screening Programme)
- ♦ Wide range of vitamins
- ♦ MedsCheck
- ♦ Free Blood Pressure Testing
- ♦ Baby Products
- ♦ Home Health Care Aids
- ♦ Giftware
- ♦ Natio Ski Care range
- ♦ Chemmarts Reward Programme

Phone (02) 6026 3271

Fax: (02) 6026 3935

Email: Jindera@chemmartpharmacy.com.au



OPEN
Mon-Fri • 7.30am to 5pm
Sat 8am to 4pm

BARNEY'S RUBBLE

Sand & Soil • Mulch & Bark • Firewood
Pavers & Sleepers • **FREE** Trailer Hire
Pebbles & Rocks • Cement Products • Fertilisers
Prompt Delivery • Equipment Hire
OPERATING FOR OVER 35 YEARS

6025 1735 • 534 Urana Rd Lavington
www.barneysrubblealbury.com.au

EQUIP

OCCUPATIONAL THERAPY

Alison Viedt

0427 263 398

alison@equipoccupationaltherapy.com

THE BENEFITS OF VOLUNTEERING WITH **LIFELINE ALBURY WODONGA**



✓ Meet new people

Our local volunteers are a tight-knit group who are passionate about helping their local community - and have a great time doing it!

✓ Connection with local community

Volunteering is a great way to build connections with like minded people whilst contributing to achieve Lifelines vision of an Australia free from suicide.

✓ Improve your health

Volunteering has been shown to positively impact your mental and physical wellbeing!

✓ Make a real difference

Our drivers, balers, sorters and retail volunteers play a vital role in ensuring our work can continue.

✓ Learn new skills

When you volunteer for Lifeline, you gain valuable skills.

TO LEARN MORE:

Call or text 0418 690 336

Email us: admin.aw@lifeline.org.au

Or drop into our Lifeline stores to have a chat!



JINDERA TYRE SERVICE

129 URANA STREET JINDERA 02 6026 3400

GOODYEAR

**DUNLOP
SUPER DEALER**

MAXXIS

MICKEY THOMPSON
PERFORMANCE
TIRES & WHEELS



KUMHO TYRE
Better. All-Ways

OFFICIAL SUPPLIERS

Jindera



Trading Hours

Mon – Fri 7:30am-7:00pm

Sat & Sun 8:00am-7:00pm

Find us on  to see our
great specials, new lines
recipes and loads more!

RECEIVE

THE JINDERA NEWS

BY EMAIL

**WOULD YOU LIKE TO RECEIVE A DIGITAL COPY
OF THE JINDERA NEWS BY EMAIL?**

**FOR A FREE MONTHLY COLOUR COPY
JUST SEND A REQUEST TO**

jinderanews@ruralcarelink.org.au

The Jindera News will be sent to the email address as requested and is published every month except January.

NOTE: The newspaper is emailed in PDF format and can vary in size from 6 to 10Mb